

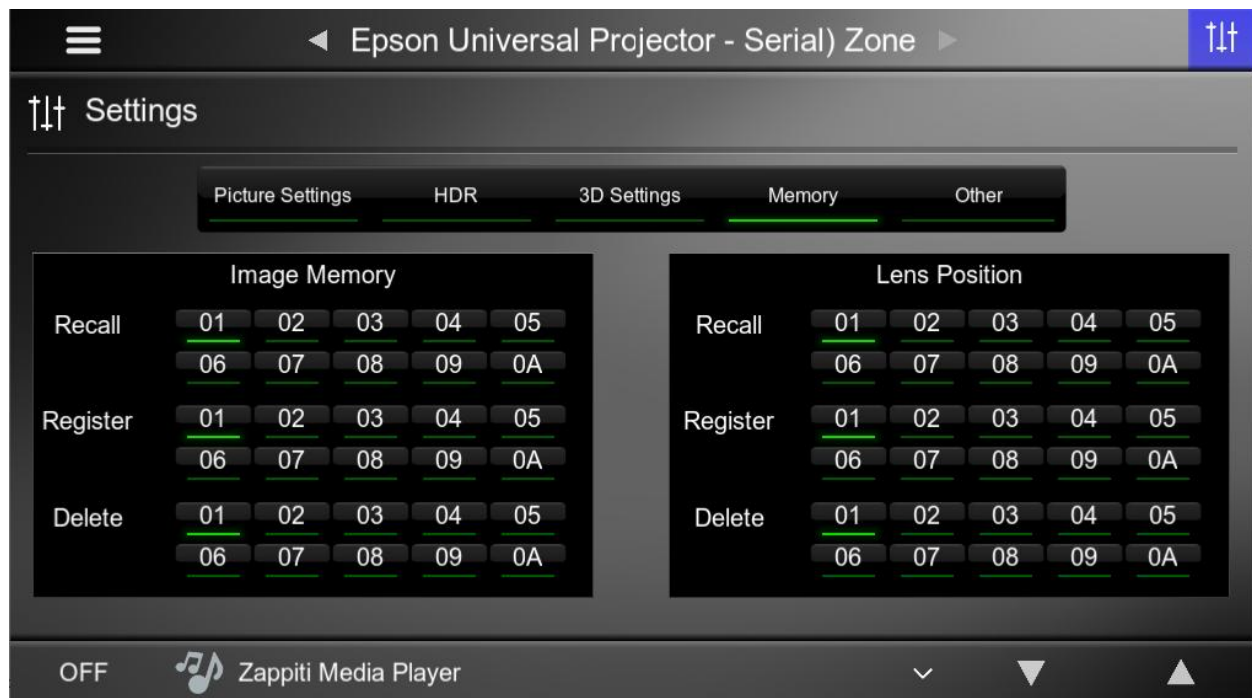
## Integration Note

Manufacturer:	<b>Epson</b>
Model Number(s):	<ul style="list-style-type: none"> <li>All RS232 &amp; IP models</li> </ul>
g! Core Module Version:	<b>g!8.4.10</b>
Driver Developer:	<b>Chowmain Software &amp; Apps</b>
Document Revision Date:	Dec 8, 2021

## Overview & Supported Features

Epson provides a universal API (ESC/VP21) for their range of projectors for both IP and RS232 based controls.

The Chowmain Epson universal projector driver for ELAN provides seamless integration of all Epson projectors via this API and allows you to control all the standard features you would expect with a projector and more.



## Features

- Bi-directional control and feedback
- Both RS232 and IP based integration
- Lamp hour feedback
- Error feedback
- Automatic email and push notification on errors (requires 4sight)
- Audio Controls (Volume Up, Volume Down)
- Power management
- Source selection
- Commands
  - Screen Mirroring
  - AV Mute
  - Freeze
  - 3D
  - Enhance 4K
  - HDR
  - HDR Color Space
  - Aspect Ratio
  - Color Mode
  - Luminance
  - Image Memory (Recall / Register / Delete)
  - Lens Position (Recall / Register / Delete)

### **Do you offer showroom discounts?**

We offer dealers a free showroom licence for demonstration and educational purposes. See link below for T&C's and sign up procedure.

[Chowmain Dealer Showroom FAQ](#)

### **I want to try this driver out before buying it?**

All Chowmain drivers for ELAN come with a 90 day trial. This is activated once you add the driver to the project (internet required). No additional steps are necessary.

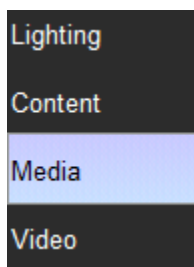
Any feature not specifically noted as supported should be assumed to be unsupported.

## g! Configuration

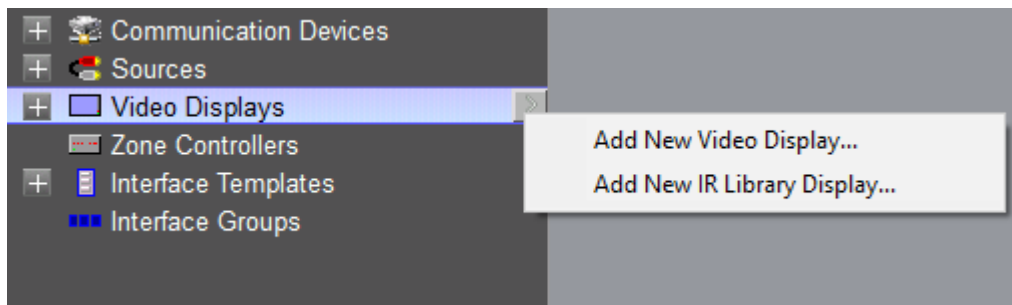
The driver requires a valid licence for use. Licences can be purchased from Chowmain's distributor [driverCentral](#). Customers can also trial the driver out for 90 days prior to licence purchase. Dealers who have showrooms can demonstrate the driver for free via the Chowmain Dealer Showroom Licence. You can apply for this licence via the [Chowmain website](#). Please follow the steps below. If you encounter any issues please submit a ticket via the driverCentral website.

## Installation Process

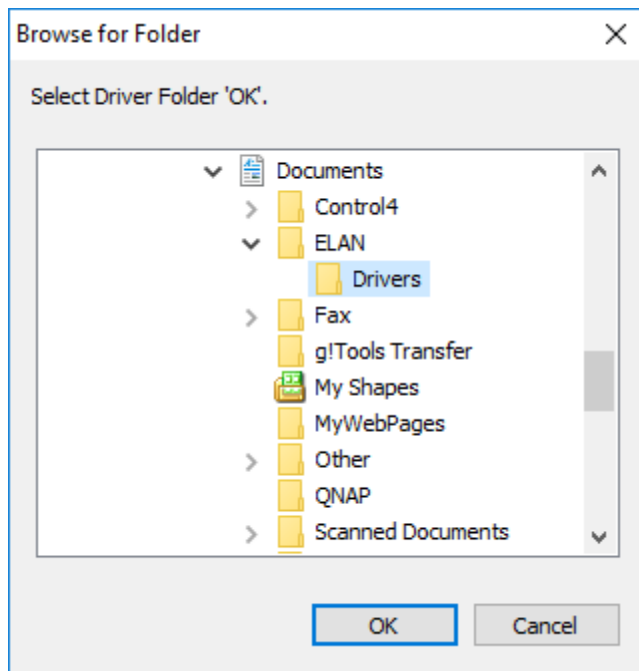
1. Download the latest version of the driver from our distributor [driverCentral](#).
2. Extract the file to your preferred ELAN driver storage location.
3. In configurator click on the Media tab



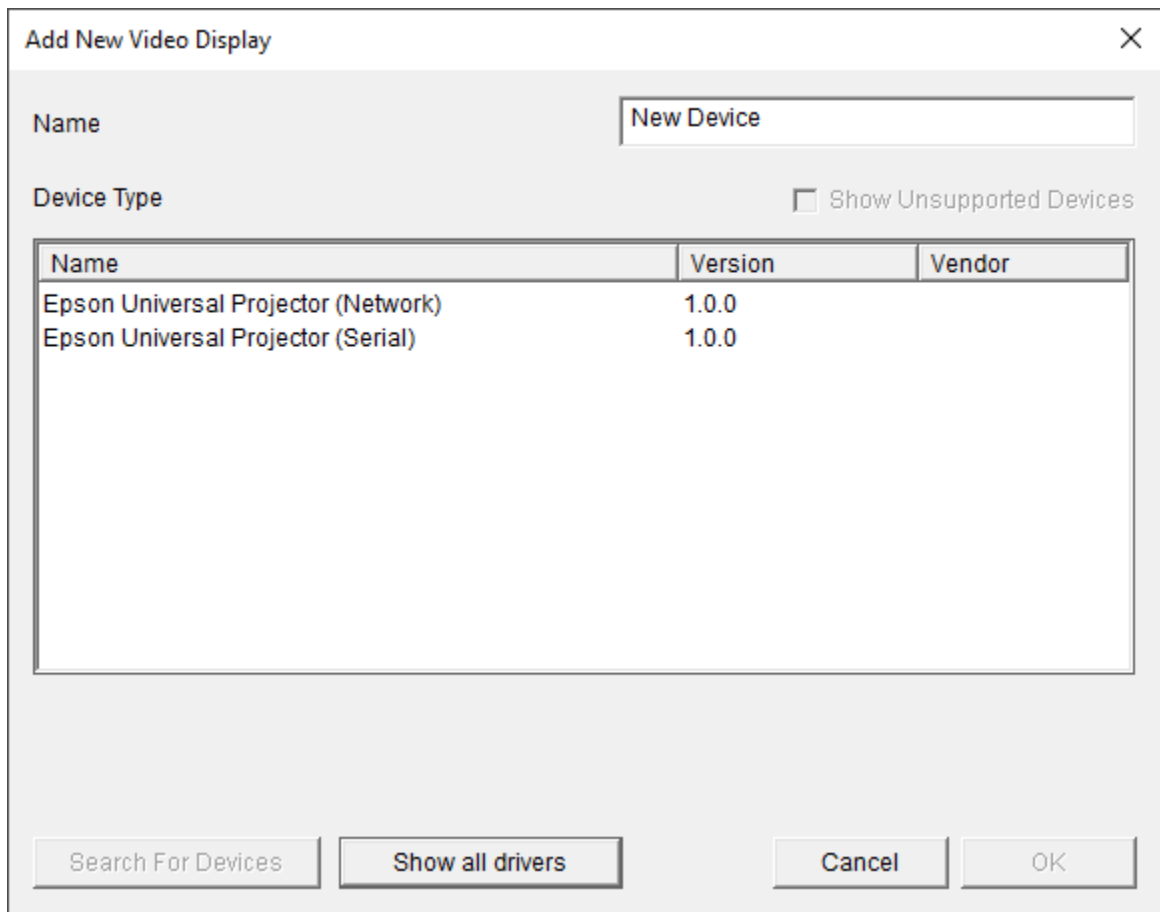
4. Click on the arrow next to Video Displays
5. Click on Add New Video Display



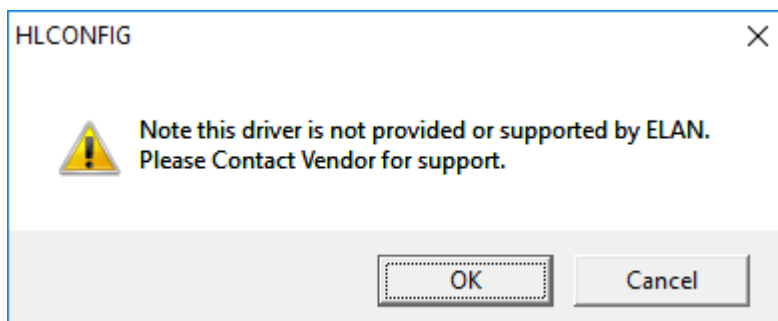
6. Click on the Search Folder button
7. Select your driver folder and press ok




8. Select the Epson Universal Projector driver for your control type.



9. Configurator will warn you that the driver is not provided or supported by Elan. Click on OK.



10. Highlight the Epson Universal Projector driver with the  symbol next to it.
11. The driver will advise you that you have 90 days to test the driver out. If you have purchased an activation key please type it in here then click on Apply.

Activation Key	
Activation Status	TRIAL - 48 HOURS REMAINING

12. Note that if you have typed in a valid activation key your status will change to ACTIVATED (you need to click off of the driver onto something else and back again to see the changes to the status).

Activation Status	ACTIVATED
-------------------	-----------

13. If you are using network enter the IP Address of the Epson projector. Note that the port number should be left as the default.

IP Address	172 . 16 . 16 . 196
------------	---------------------

14. If you are using serial make sure you have a serial port communications device installed and configured correctly before selecting it in the driver's communication device drop down.

Communication Device	<div>&lt; SELECT &gt;</div> <div>&lt; SELECT &gt;</div> <div>Serial Port</div>
----------------------	--

15. You can adjust the power on and power off delays. These delays will pause commands in the queue after a power on and power off command. Good for switching inputs when it is warming up and powering it back on after cooling down.

Power on Delay (Seconds)	10
Power off Delay (Seconds)	10

16. You can adjust the poll interval if required. Note this effects how often feedback is returned. We recommend keeping it at the default of 10 seconds.
17. Click on each Page Layout and modify to delete options that you do not need for the projector (eg if the projector does not support that option or if you do not want the end user to mess with that particular option). Note options are one-way commands only.

18. Expand on your Epson Driver
19. For each input. Click on the input you want to configure
20. Assign the source as the source device.
21. Congratulations you have successfully setup the Epson driver for ELAN.

## g! CONFIGURATION DETAILS

The following table provides settings used in Configurator when connecting to Android TV devices. Please refer to the Configurator Reference Guide for more details.

Devices	Variable Name	Setting	Comments
Video Display (Epson Universal Projector)	Name	<User Defined>	
	System #	<Auto Detect>	
	Driver Version	<Auto Detect>	
	Driver Vendor	Chowmain Software & Apps	
	Device Type	Epson Universal Projector (Network or Serial)	
	Activation Key	<User Defined> This is the driverCentral activation Key	See Note 1
	Activation Status	<Auto Detect> This provides the licence status feedback	See Note 1
	Connection Status	<Auto Detect> This is the connection status for IP drivers	
	Current Power	<Auto Detect> This is the current power state of the projector	
	Current Input	<Auto Detect> This is the current input of the projector	
	Current Lamp Hours	<Auto Detect> This is the current lamp hours of the projector	
	Power on Delay	<User Defined> This is the amount of time the driver should wait after the projector after it sends a	



	(Seconds)	power on command before sending further commands	
	Power off Delay (Seconds)	<User Defined> This is the amount of time the driver should wait after the projector after it sends a power off command before sending further commands	
	Poll Interval (Seconds)	<User Defined> This is the amount of time the driver should wait between polling for state feedback on power, input, lamp hours and error.	
	IP Address	<User Defined> This is the IP address of the projector. Note that this is only available for the Network version of the driver	See Note 2

**Notes:**

1. The driver requires a valid licence for use. Licences can be purchased from the driverCentral website. All of the licences are site licences. This means that you can use as many instances of the driver as you want in a single system with the one licence. The driver also comes with a built in 90 day trial. The driver will provide feedback as to the state of the licence in the Activation Status field.
2. This is the IP Address of the projector that is only available in the IP version of the driver. Please make sure that it is on a static IP address or reservation. Change of IP address will result in loss of control. Also please make sure that you have set the projector standby mode to 'communications on' otherwise you will lose control when the projector turns off

## COMMON MISTAKES

1. IP Address needs to be on a static IP address or IP reservation
2. Please make sure that you have set the projector standby mode to 'communications on' otherwise you will lose control when the projector turns off
3. Options are one-way commands only. No feedback is provided.

## ELAN DEVELOPER PARTNER INFORMATION

This ELAN driver was written and supported by:



<http://www.chowmainsoft.com>