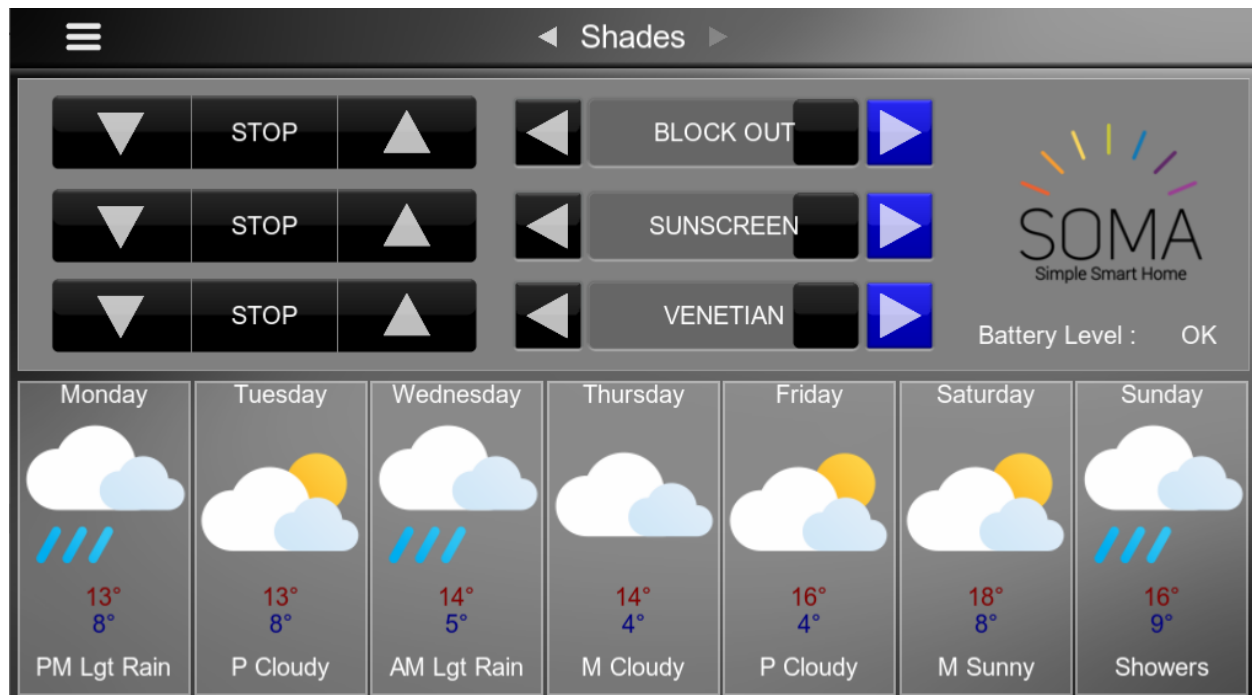


Integration Note

Manufacturer:	Soma
Model Number(s):	<ul style="list-style-type: none"> • Soma Connect • Soma Smart Shades 2 • Soma Tilt 2
g! Core Module Version:	g!8.4.10
Driver Developer:	Chowmain Software & Apps
Document Revision Date:	Aug 23, 2021

Overview & Supported Features

SOMA Smart Shades turns the existing shades in your home into smart shades with no screws and no additional wiring. These Bluetooth based controllers are battery operated, can be either USB charged or solar panel charged and provide you with the ability to move your shades up, down, stop or to a specific level. It is compatible with chain based shading solutions and also tilt (rod) based solutions. As such it can be easily retrofit into existing homes at an extremely affordable price.



Features

- Bi-directional control and feedback via local API
- Import of all soma shades (including tilt)
- Up / Down / Stop / Level based commands
- Position feedback
- Battery level feedback

Do you offer showroom discounts?

We offer dealers a free showroom licence for demonstration and educational purposes. See link below for T&C's and signup procedure.

[Chowmain Dealer Showroom FAQ](#)

I want to try this driver out before buying it?

All Chowmain drivers for ELAN come with a 90 day trial. This is activated once you add the driver to the project (internet required). No additional steps are necessary.

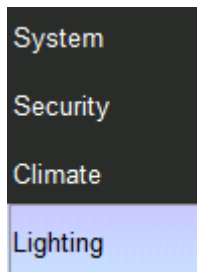
Any feature not specifically noted as supported should be assumed to be unsupported.
--

g! Configuration

The driver requires a valid licence for use. Licences can be purchased from Chowmain's distributor [driverCentral](#). Customers can also trial the driver out for 90 days prior to licence purchase. Dealers who have showrooms can demonstrate the driver for free via the Chowmain Dealer Showroom Licence. You can apply for this licence via the [Chowmain website](#). Please follow the steps below. If you encounter any issues please submit a ticket via the driverCentral website.

Installation Process

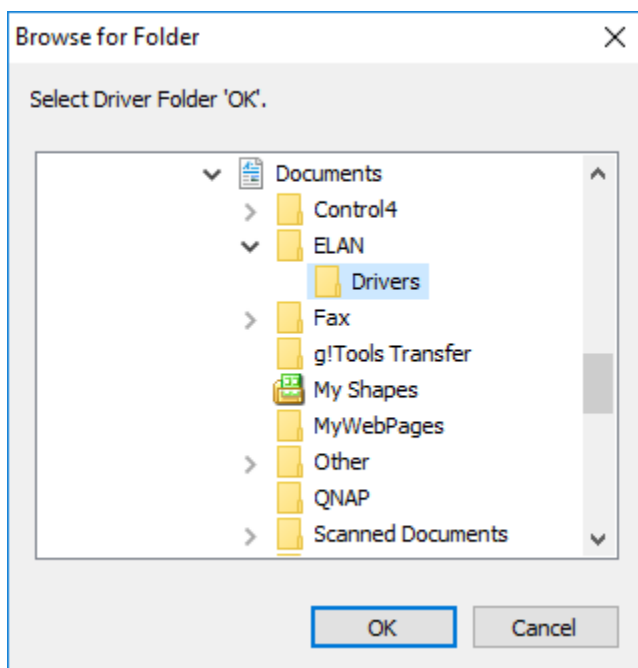
1. Download the latest version of the driver from our distributor [driverCentral](#).
2. Extract the file to your preferred ELAN driver storage location.
3. In configurator click on the Lighting tab



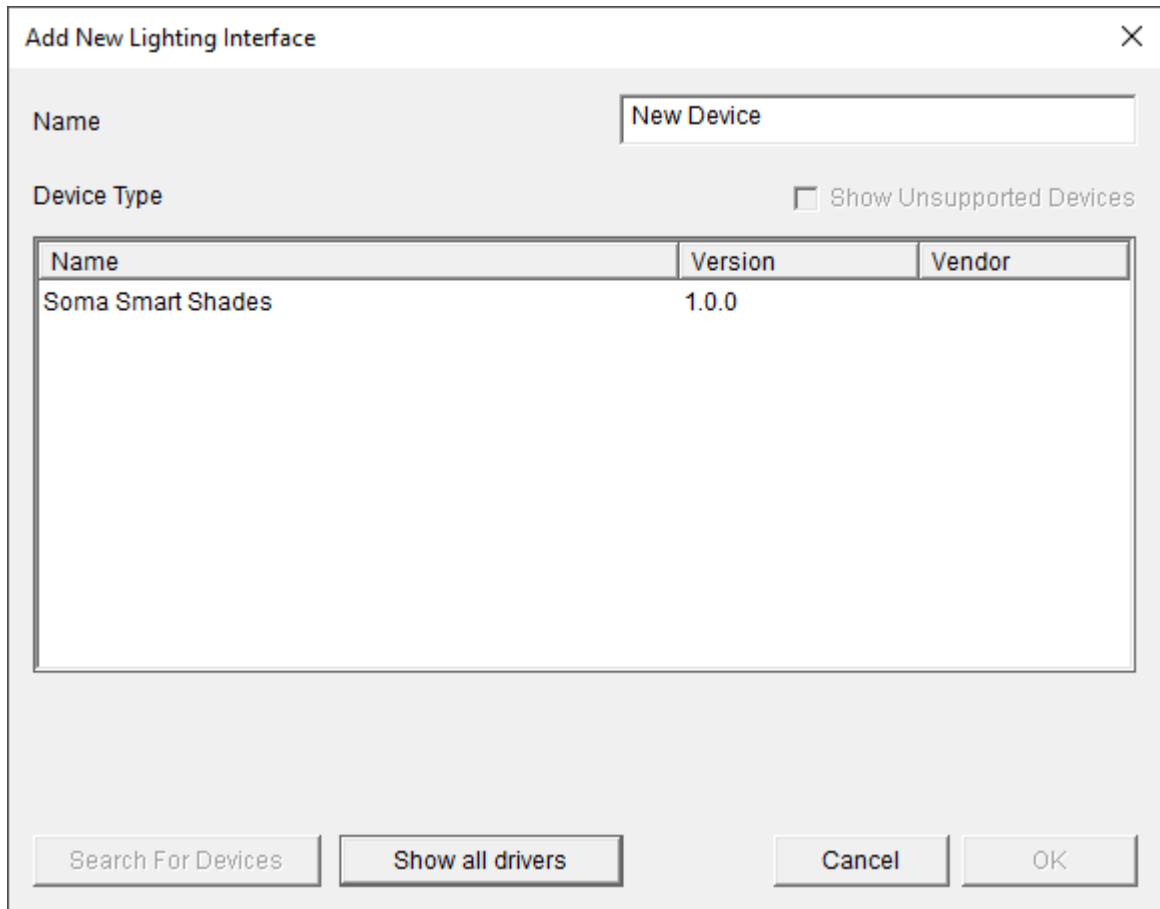
4. Click on the arrow next to Lighting Interfaces
5. Click on Add New Lighting Interface



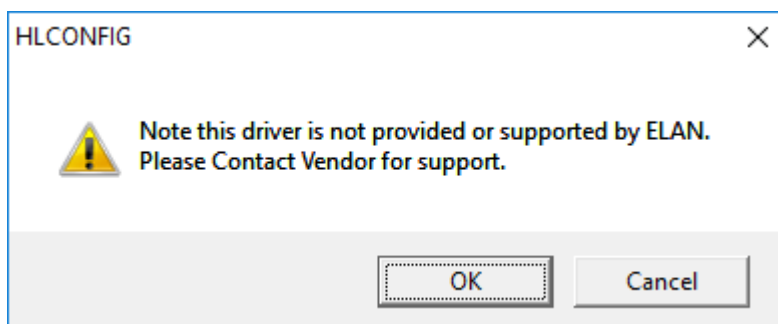
6. Click on the Search Folder button
7. Select your driver folder and press ok



8. Select the Soma Smart Shades driver for your control type.



9. Configurator will warn you that the driver is not provided or supported by Elan. Click on OK.



10. Highlight the Soma Smart Shades driver.
11. The driver will advise you that you have 90 days to test the driver out. If you have purchased an activation key please type it in here then click on Apply.

Activation Key	<input type="text"/>
Activation Status	TRIAL - 48 HOURS REMAINING

12. Note that if you have typed in a valid activation key your status will change to ACTIVATED (you need to click off of the driver onto something else and back again to see the changes to the status).

Activation Status	ACTIVATED
-------------------	-----------

13. Enter the IP Address of the Soma Connect device.

NOTE: The Soma Connect device should be assigned a static or reserved IP address

IP Address	<input type="text" value="172 . 16 . 16 . 196"/>
------------	--

14. If the driver connects successfully it will update the firmware version.

Firmware Version	2.2.8
------------------	-------

15. Press the Import Devices button. The driver will import the blinds. You will notice the Number of Devices increase to the number you have.

Number of Devices	2
-------------------	---

16. You can adjust the poll interval if desired. We recommend a higher interval the more Soma Shades or Soma Tilt devices you have as we need to poll each device individually.

Poll Interval (Seconds)	<input type="text" value="15"/>
-------------------------	---------------------------------

17. OPTIONAL: We also recommend adjusting the battery level warning to a higher warning. This will change the string variable from OK to LOW and also fire an event map if any of the batteries are below that level.



18. Now that the blinds have imported in you must add them to a custom page.

19. For each blind you can add the following controls

- a. Shade Button (Latching) – Used for UP / DOWN / STOP commands

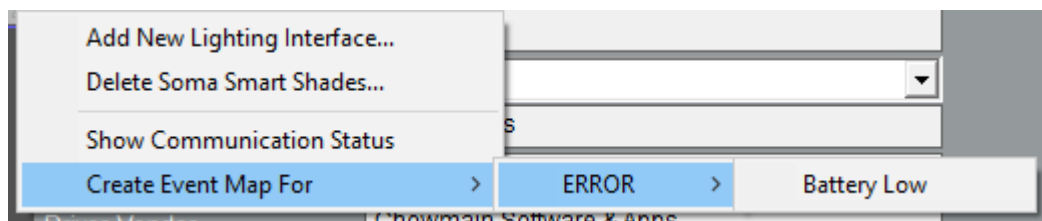


- b. Light Dimmer Control – Used for UP/ DOWN / LEVEL commands



20. OPTIONAL: You can also add in a Text (FEEDBACK) control to provide the battery feedback for the blinds. Note you will also need to put in Static Text control as well as a label.

21. OPTIONAL: You can also program an event map for the Battery Low event. This event will fire if any of the shades falls below the Battery Level Warning level you set earlier.



22. Congratulations you have successfully setup the Soma driver for ELAN.

g! CONFIGURATION DETAILS

The following table provides settings used in Configurator when connecting to Android TV devices. Please refer to the Configurator Reference Guide for more details.

Devices	Variable Name	Setting	Comments
Lighting Interface (Soma Smart Shades)	Name	<User Defined>	
	System #	<Auto Detect>	
	Driver Version	<Auto Detect>	
	Driver Vendor	Chowmain Software & Apps	
	Device Type	Soma Smart Shades	
	Device Classification	<User Defined> Shades should be selected for this	
	Activation Key	<User Defined> This is the driverCentral activation Key	See Note 1
	Activation Status	<Auto Detect> This provides the licence status feedback	See Note 1
	Firmware Version	<Auto Detect> This is the firmware version of the Soma Connect device	
	Number of Devices	<Auto Detect> This is the number of shades that the Soma Connect	
	Poll Interval	<User Defined > How often the driver should poll for position and battery feedback	See Note 2
	Battery Level Warning	<User Defined > Battery level warning percentage	See Note 3

	IP Address	<User Defined> This is the IP address of the Soma Connect Device.	See Note 4
--	------------	---	------------

Notes:

1. The driver requires a valid licence for use. Licences can be purchased from the driverCentral website. All of the licences are site licences. This means that you can use as many instances of the driver as you want in a single system with the one licence. The driver also comes with a built in 90 day trial. The driver will provide feedback as to the state of the licence in the Activation Status field.
2. The driver polls for both level feedback (in percent) and also battery feedback. Note that for larger systems a higher poll rate is recommended as we need to poll for each individual shade.
3. The battery level warning percentage is used for firing of the Battery Low event map and also to change the string variable from OK to LOW.
4. This is the IP Address of the projector. Please make sure that it is on a static IP address or reservation. Change of IP address will result in loss of control.

COMMON MISTAKES

1. IP Address needs to be on a static IP address or IP reservation
2. Poll Interval is not adjusted for larger systems (needs to be higher as we poll for each individual device)

ELAN DEVELOPER PARTNER INFORMATION

This ELAN driver was written and supported by:



<http://www.chowmainsoft.com>