

Integration Note

Manufacturer:	Hikvision
Model Number(s):	DS-K1T331
g! Core Module Version:	Schema 92
Driver Developer:	T4Control
Document Revision Date:	1.0.0

General Note

This driver allow the integration of the Hikvision Face Recognition Terminal model DS-K1T331 to ELAN.

Minimum Firmware version: 3.1.4

SUPPORTED FEATURES

- Open and Close the lock.
- Events based on the user face detection
- Camera image on ELAN Interface

NOT SUPPORTED FEATURES

- User entrance log information

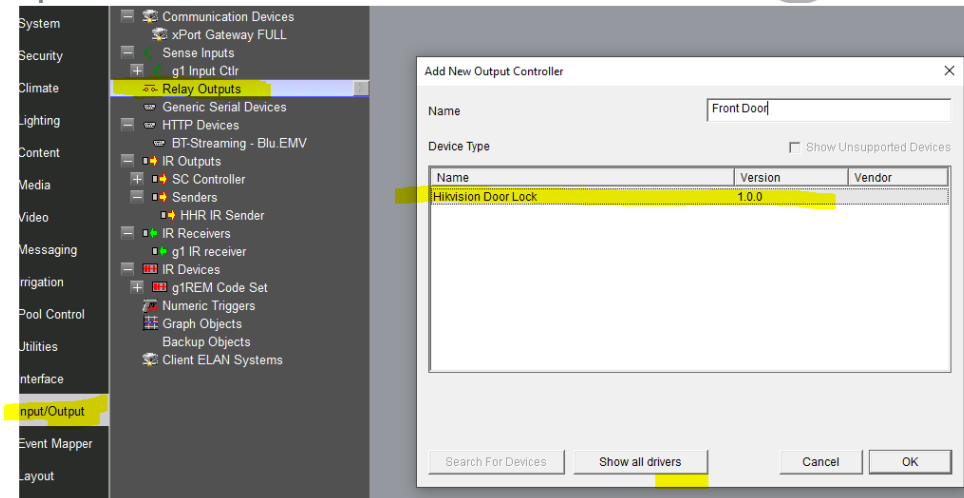
g! Configuration

Setup the Hikvision lock according to the manual.

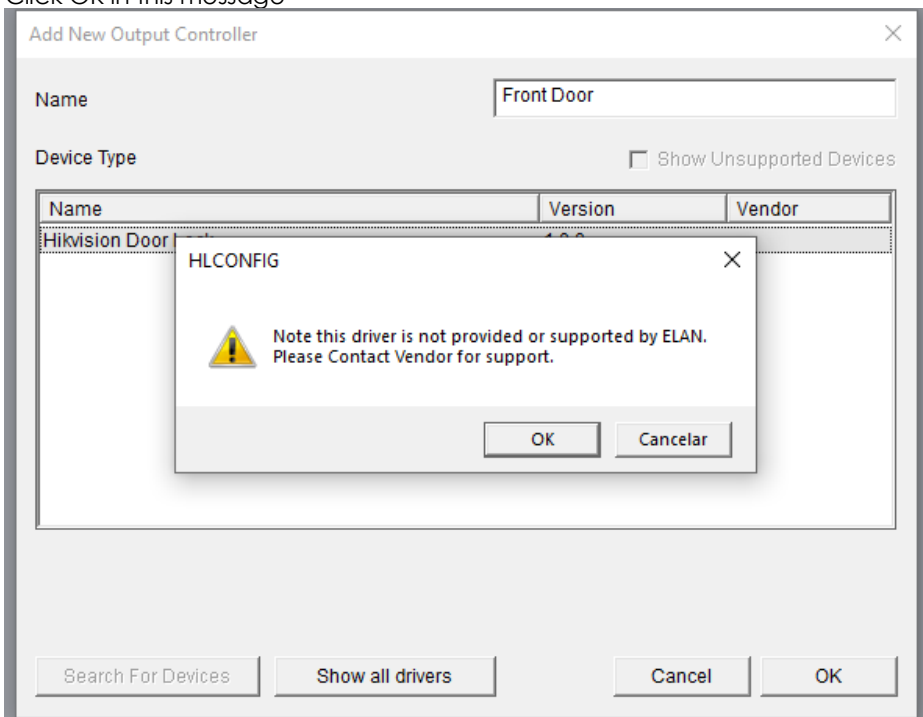
Set a fixed IP in the Hikvision Lock.

Driver Setup:

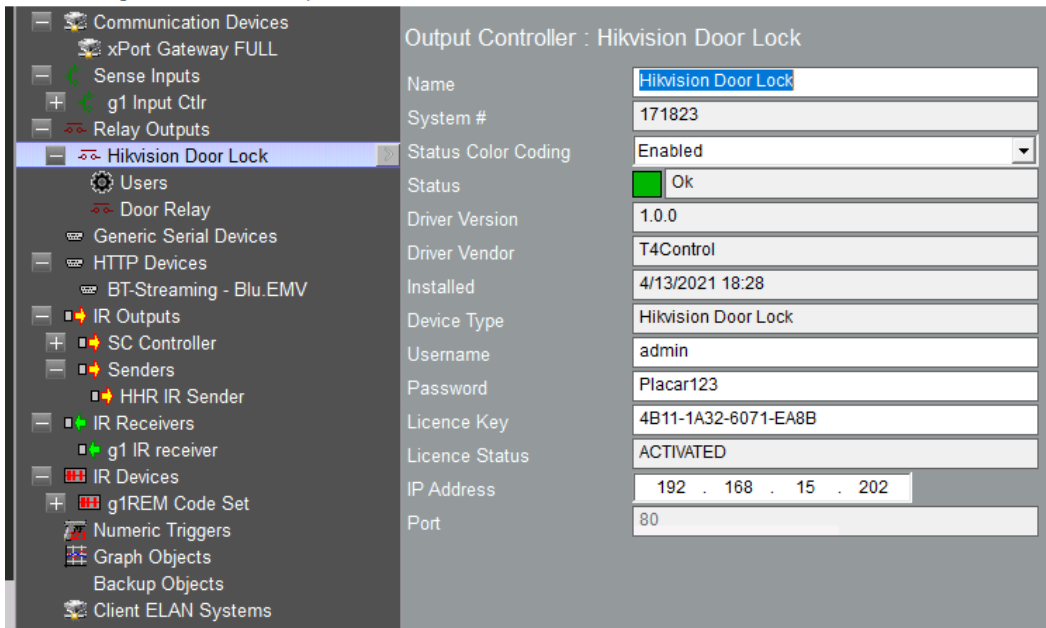
- 1) At Input/Output Add the driver:



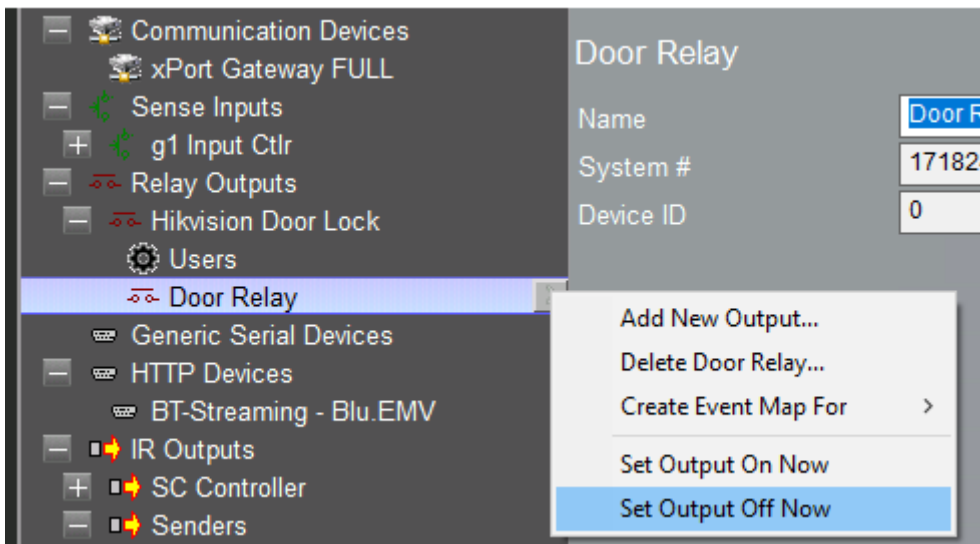
2) Click OK in this message



3) Set the parameters "Username", "Password" and "License Key".

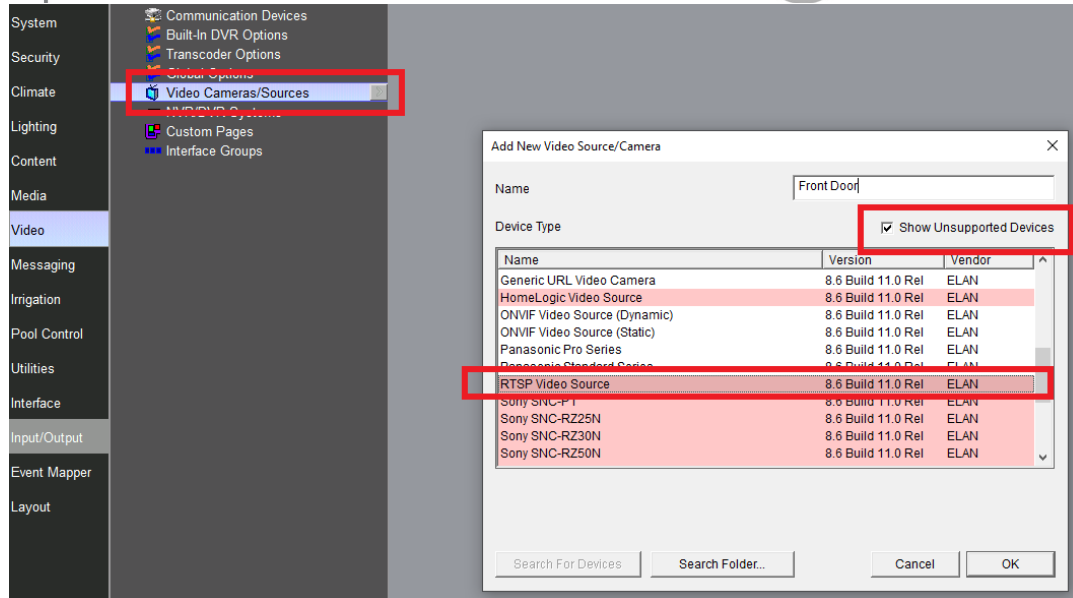


4) Now, click on the "Door Relay" and select "Set Output Off Now" and check if the door will open.



Camera Setup:

1) Add new RTSP Video Source



- 2) Set URL following the example: "192.168.15.202:554/Streaming/Channels/101", replace the IP with the lock's IP.
- 3) Set Username and Password same as set in the lock.

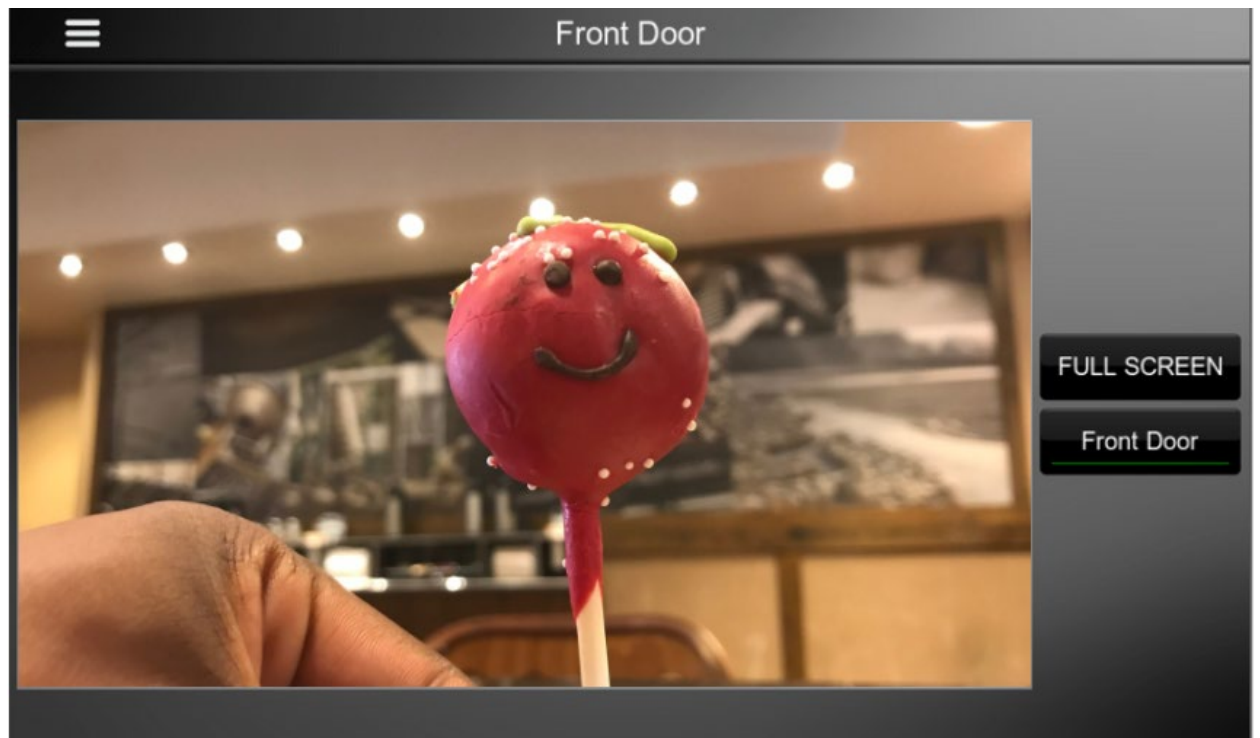
Video Source/Camera : Front Door

Name	Front Door
Location	< NONE >
System #	171780
Status Color Coding	Enabled
Status	Searching
Driver Version	8.6 Build 11.0 Rel
Driver Vendor	ELAN
Installed	4/13/2021 16:44
Device Type	RTSP Video Source
Serial Number	
Hardware ID	
URL	192.168.15.202:554/Streaming/Channels/101
Username	admin
Password	
Zoom Type	Continuous
Flip Image 180°	No
Hide Full Screen Control	No

- 4) Select the door relay for "Output 1" and "Momentary" for "Output 1 Type"

The screenshot shows the ELAN configuration interface. On the left, a sidebar lists various configuration categories: Communication Devices, Built-In DVR Options, Transcoder Options, Global Options, Video Cameras/Sources, Front Door, Options (highlighted), NVR/DVR Systems, Custom Pages, and Interface Groups. The main area is titled 'Options: Front Door'. It contains several configuration fields: 'Output 1' is set to 'Door Relay' (a dropdown menu), 'Output 1 Name' is 'Front Door' (a text field), 'Output 1 Type' is 'Momentary' (a dropdown menu), 'Output 2' is '< NONE >' (a dropdown menu), 'Output 2 Name' is empty (a text field), and 'Output 2 Type' is '< SELECT >' (a dropdown menu).

You can now unlock using the button in the camera screen.



User events Setup:

You can configure ELAN to trigger actions based on the user facial recognition. The driver has the capability to recognize up to 20 users from the Hikvision Lock.

The driver do not have instantaneous actions execution, it checks the user entrance each 10 seconds. When it finds it, it will trigger the event.

- 1) Type the users names in the list in uppercase.

Users	Users List
User 1	JOHN
User 2	MARIA
User 3	KEEANU
User 4	REAVES
User 5	
User 6	
User 7	
User 8	
User 9	
User 10	
User 11	
User 12	
User 13	
User 14	
User 15	
User 16	
User 17	
User 18	
User 19	
User 20	

2) Create event map for the selected user.

Output Controller : Hikvision Door Lock

Name: Hikvision Door Lock

System #: 171823

Device Type: Hikvision Door Lock

Username: admin

Password: [REDACTED]

Licence Key: 4B11-1A32-6071-EA8B

Licence Status: ACTIVATED

IP Address: 192 . 168 . 15 . 202

Port: 80

Create Event Map For: Users > User 1

Users
User 1
User 2
User 3
User 4
User 5
User 6
User 7
User 8
User 9
User 10
User 11
User 12
User 13
User 14
User 15
User 16
User 17
User 18
User 19
User 20

ELAN DEVELOPER PARTNER INFORMATION

This ELAN driver was written and supported by:



<http://www.t4control.com>