



Hibersense

**HIBERSENSE
INTEGRATION GUIDE**
MODULE DEVELOPED BY INTEGRITY SOFTWARES

Integrity Softworks' Hibernsense module provides **two-way control of connected Hibernsense comfort control systems.**

Hibernsense Module Features:

- **Familiar Now Playing** interface
- **Simple Hibernsense Scene** activation
- **Zone Status** display
- **Events** based on **sensors** in **every room**

Supported Models:

This module works with any Hibernsense system that is connected to the Hibernsense cloud servers. While Hibernsense will continue to operate with the current settings if Internet access is unavailable, the module will not be able to update the system status, trigger events, or control the system until Internet access is restored.

This module is designed to work in tandem with the Hibernsense mobile app, which should be used to perform the initial setup and configuration.

The Hibernsense module is only supported on URC products running **Total Control 2.0**. This module is not natively supported on any legacy Total Control 1.0 software or devices.

Getting Started:

Ensure that the Hibernsense system is properly installed and configured via the Hibernsense mobile app. The username, password, and building name used in the mobile app will be required to configure the Total Control module.



Hibernsense

Downloading & Importing the Module:

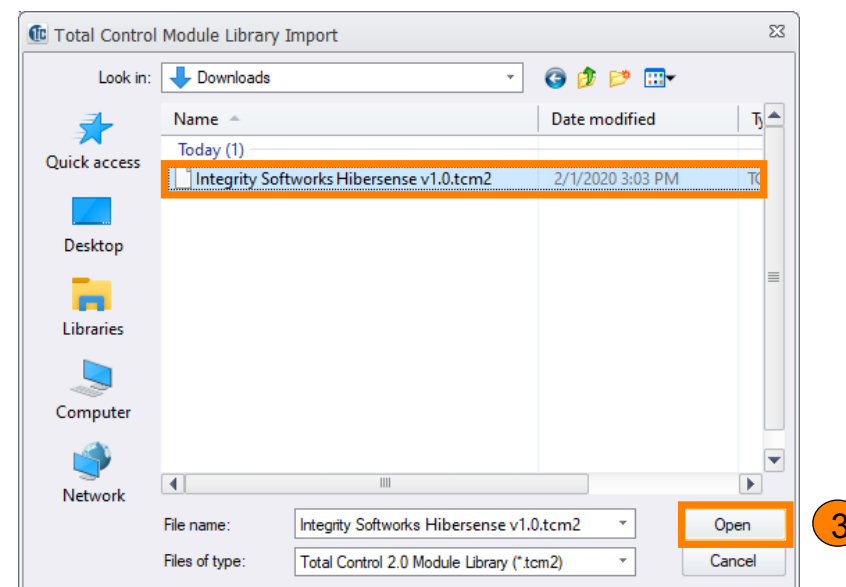
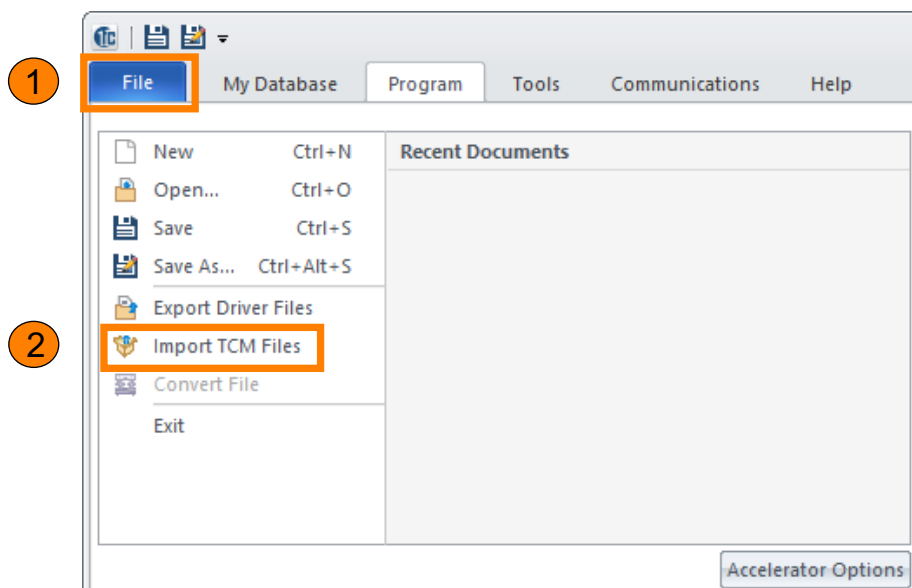
Download the Hibernsense two-way module from Driver Central:

<http://DriverCentral.io/Hibernsense>

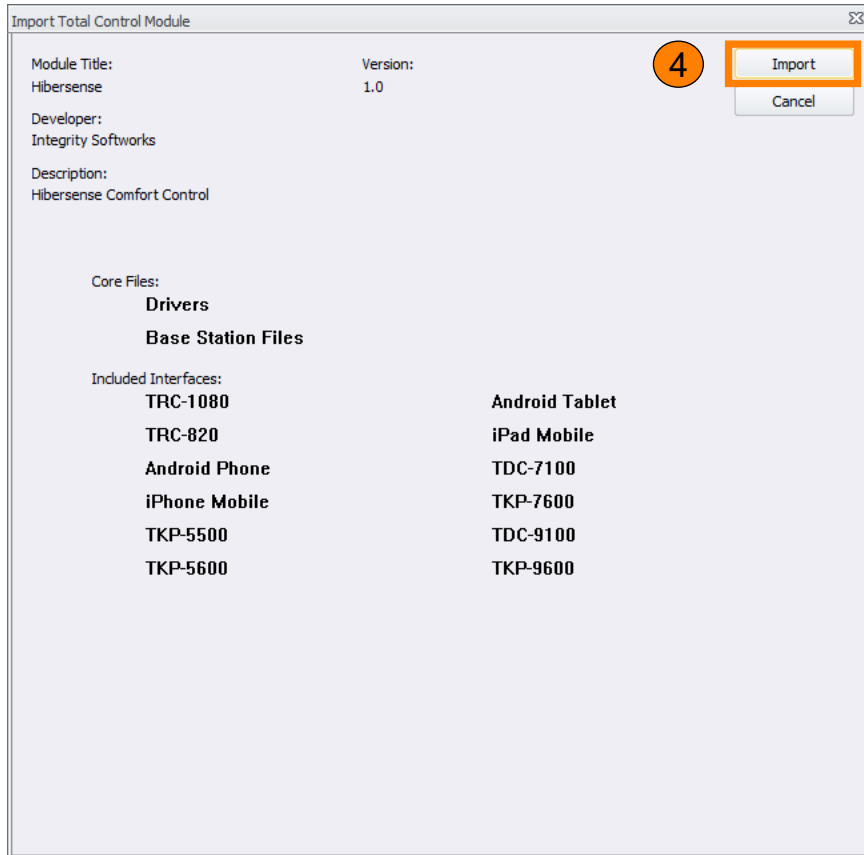
Once the module has been downloaded, perform the following in Accelerator:

1. Select the **File** tab.
2. Select **Import TCM Files**.

3. **Locate the module**, usually found in the Downloads folder, and **select Open**.



4. Select **Import**.

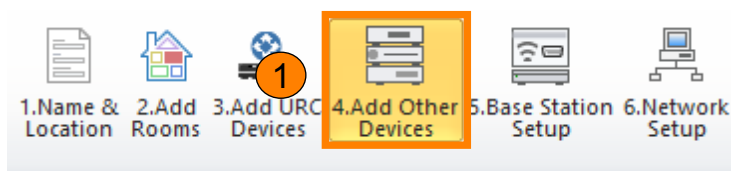


5. Save the current file if necessary and **restart Accelerator**.

Adding the Module:

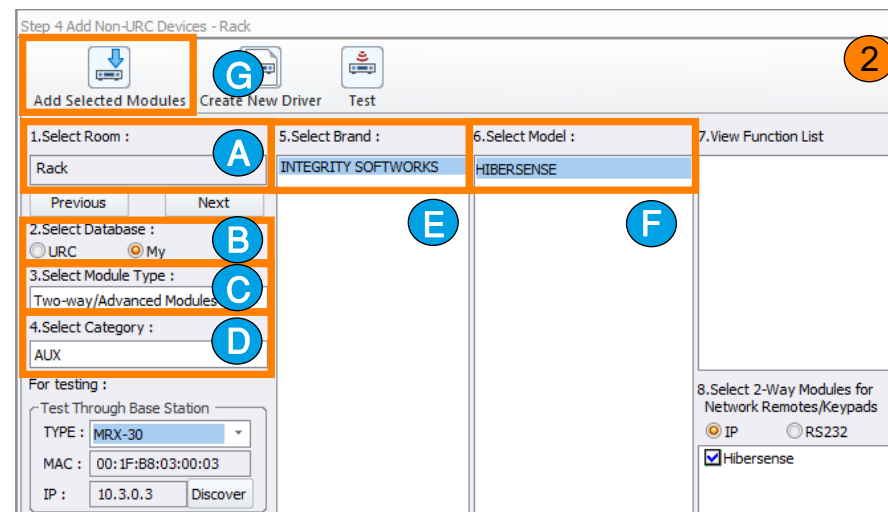
The HiberSense module can be added to any new or existing system.

1. Select **Step 4: Add Other Devices**

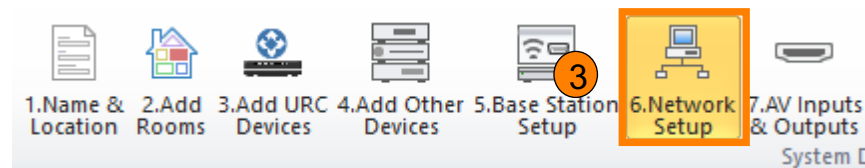


2. Make the following selections:

- a. **Select Room:** Choose which room in the system to place the module.
- b. **Select Database:** My
- c. **Select Module Type:** Two-way/Advanced Modules
- d. **Select Category:** AUX
- e. **Select Brand:** INTEGRITY SOFTWARES
- f. **Select Model:** HIBERSENSE
- g. Select **Add Selected Modules.**



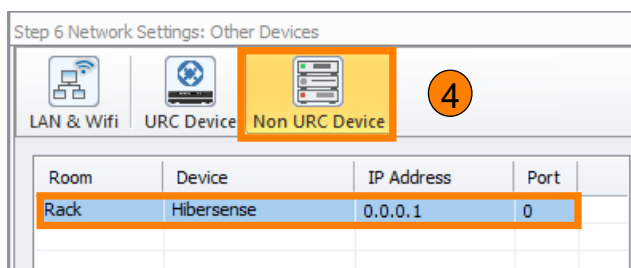
3. Select **Step 6: Network Setup.**



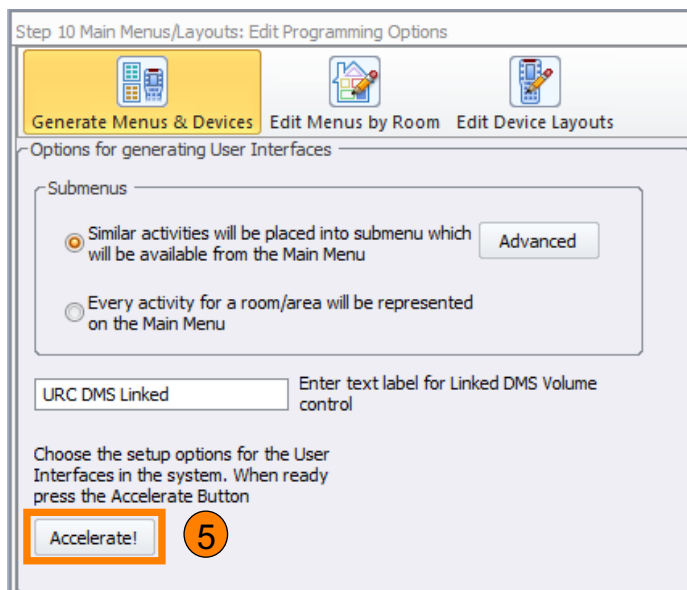
TOTAL CONTROL 2.0

HIBERSENSE INTEGRATION GUIDE

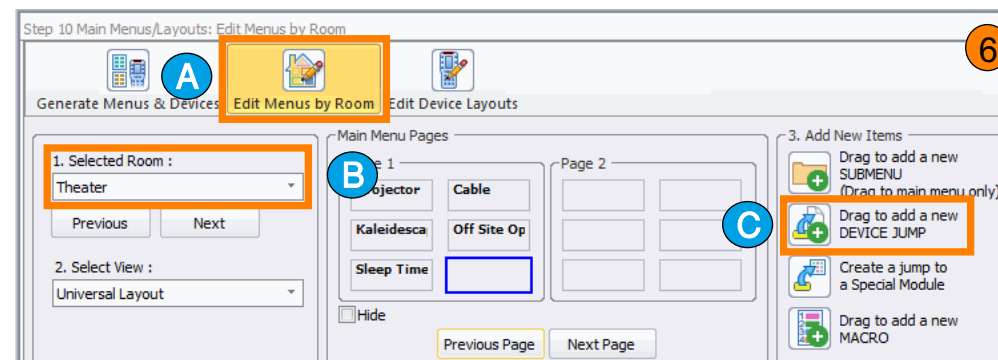
4. Select **Non URC Device** and enter an unused **IP address for the Hibernsense device**. The module doesn't use an IP, so any address can be entered, although Accelerator requires that it be unique.



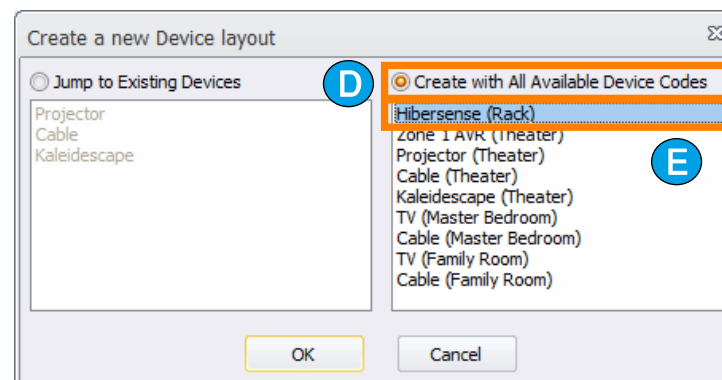
5. Select **Step 10: Edit User Interfaces** and **Accelerate!**



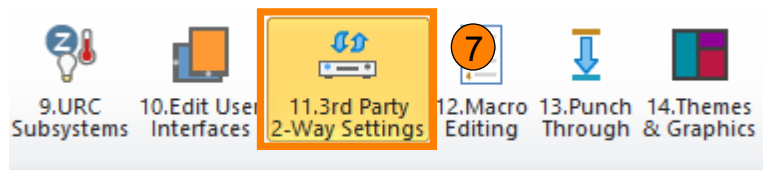
6. To add the module to other rooms, do this for each room in Step 10:
 - a. Select **Edit Menus by Room**.
 - b. Select the room in which to add the module.
 - c. Drag the **Device Jump** to an available position in the Main Menu or Sub Menu pages.



- d. In the dialog, select **Create with All Available Device Codes**.
- e. Select the **Hibernsense** module and click **OK**.

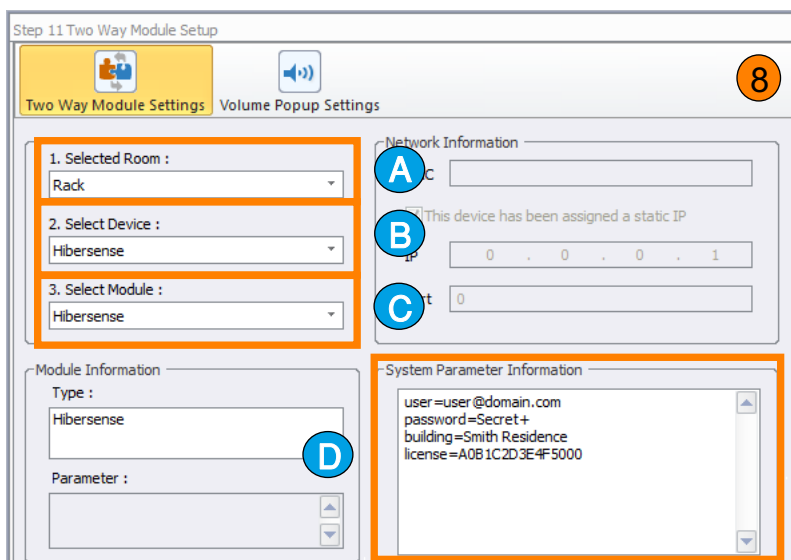


7. Select **Step 11: 3rd Party 2-Way Settings.**

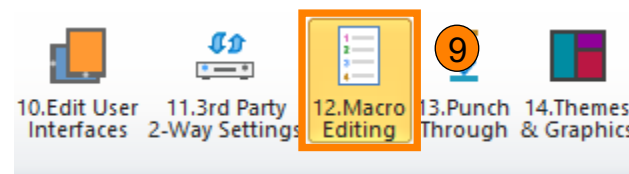


8. Enter the following:

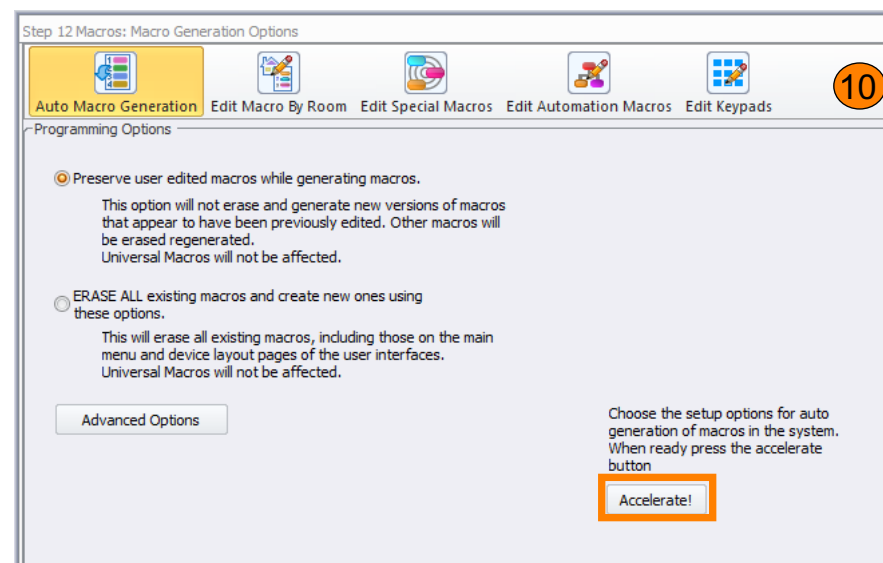
- Select Room:** Select the room where the module is located.
- Select Device:** Select **Hibersense**.
- Select Module:** This is auto-populated with **Hibersense**.
- System Parameter Information:** Enter the Hibersense username, password, building name, and the license obtained from Driver Central.



9. Select **Step 12: Macro Editing.**



10. Select **Accelerate!**



11. **Download** the configuration to the system.

TOTAL CONTROL 2.0

HIBERSENSE INTEGRATION GUIDE

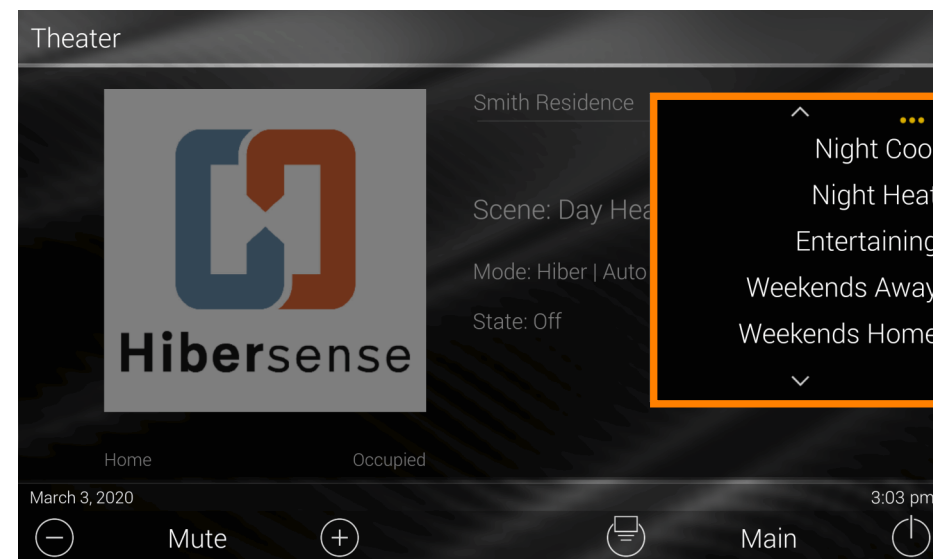
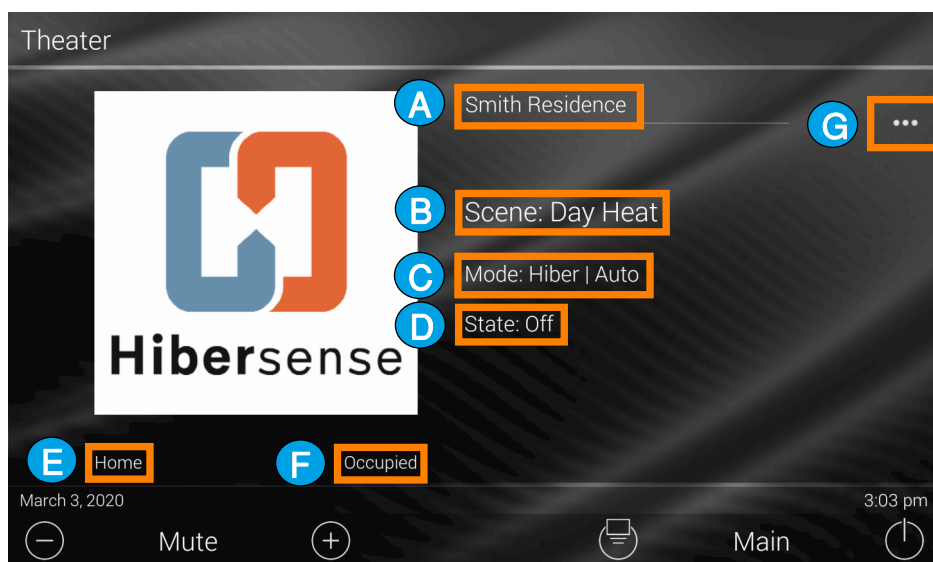
Basic Module Navigation:

The Hibernsense module uses a simplified version of the familiar media player interface. The main display shows the current status of the system and a single button:

- a. **Building Name**
- b. **Active Hibernsense Scene**
- c. **Current Hibernsense Mode**
- d. **Current HVAC State**
- e. **Zone Name**
- f. **Occupation Status**
- g. **Options Menu**

Options Menu:

The Options Menu presents a list of the available Hibernsense scenes. Simply select the desired scene from the list to activate it.



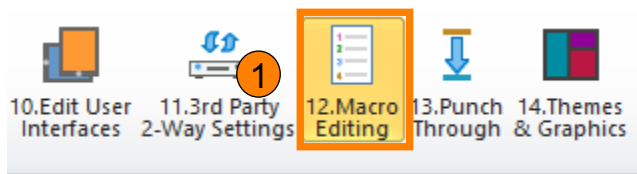
Available Two-Way Commands:

The Hibernsense module offers a number of two-way commands that can be added to any macro. Below are the available commands:

- **Get Room Temperature:** Retrieve the specified room's current temperature as a whole number.
- **Get Room Occupation Status:** Retrieve the specified room's occupation status. (Occupied/Unoccupied)
- **Get Building Occupation Status:** Retrieve the building's occupation status. (Occupied/Unoccupied)
- **Get Active Scene:** Retrieve the active Hibernsense scene name.
- **Set Active Scene:** Activate the specified Hibernsense scene.

Use the Hibernsense two-way module commands in the usual manner:

1. Select **Step 12: Macro Editing** and choose the macro to edit.



2. Select the **2-Way Module Command** button to add a Hibernsense command to your macro.



3. Enter the following:
 - a. **Name:** Enter a name for the command.
 - b. **Available Devices:** Select **Hibernsense**.
 - c. **Available Command:** Select the command from the list.
 - d. **Parameters:** Enter the room name or scene name exactly as it appears in the Hibernsense mobile app.

Automation Options:

The following options are only available as Automation Macros, which allow the Total Control 2.0 system to react to specific Hibernsense device and sensor changes. Below are the Device Events supported within the Hibernsense module:

- **Room Occupation:** Triggers a macro when Hibernsense updates the specified room's status to occupied or unoccupied.
- **Room Temperature:** Triggers a macro when Hibernsense indicates the specified room reaches the provided temperature.
- **Building Occupation:** Triggers a macro when Hibernsense updates the building's status to occupied or unoccupied.
- **HVAC State:** Triggers a macro when Hibernsense changes the HVAC system's state to heating, cooling, or off.
- **Scene State:** Triggers a macro when the specified Hibernsense scene is activated or deactivated.