

Integration Note

Manufacturer:	Android TV
Model Number(s):	<ul style="list-style-type: none"> • AirTV • Chromecast with Google TV • Foxtel Now • Nvidia Shield • Xiaomi Mibox • Other Google / Android TV boxes
g! Core Module Version:	g!8.2
Driver Developer:	Chowmain Software & Apps
Document Revision Date:	Feb 22, 2021

Overview & Supported Features

Want to control the Chromecast with Google TV, Nvidia Shield, Xiaomi Mibox, AirTV and more? The Chowmain Android TV driver is designed to control Google Android TV boxes. It is a software only solution so no extra hardware required. This allows you to utilise the ELAN's viewer and HR remotes to navigate the Android operating system and control applications as you would with a normal infra red remote control. No need to root the device and no need to install any additional hardware.

Add to this the ability to launch applications via commands for individual apps (for the most popular applications), via HR remote buttons and also programmatically and the ability to input text via an onscreen popup keyboard.

This driver requires a 3rd party application called Zank Remote be installed and configured on your android device. Just install the app from play store and follow the instructions to configure the Android TV box. We partnered with the developer of Zank to further develop their app to provide the functionality we require for integration. Note a portion of licencing revenue goes towards our partners at Zank to support the Zank app development.



Features

- IP control over the majority of Android based devices. No additional hardware required and no root access required.
- Ability to direct launch many of the popular applications
 - Bing
 - Crunchy Roll
 - Disney Plus
 - HBO Max
 - Kayo
 - Netflix
 - Plex
 - Sky Sports Now
 - Sling
 - Stan
 - Tubi
 - Twitch
 - Youtube
 - Youtube Kids
 - Youtube TV
- Keyboard support for text entry (perfect for inputting username, password or search text).

Do you offer showroom discounts?

We offer dealers a free showroom licence for demonstration and educational purposes. See link below for T&C's and signup procedure.

[Chowmain Dealer Showroom FAQ](#)

I want to try this driver out before buying it?

All Chowmain drivers for ELAN come with a 90 day trial. This is activated once you add the driver to the project (internet required). No additional steps are necessary.

Any feature not specifically noted as supported should be assumed to be unsupported.

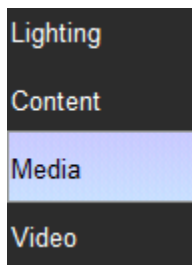
g! Configuration

The driver requires a valid licence for use. Licences can be purchased from Chowmain's distributor [driverCentral](#). Customers can also trial the driver out for 90 days prior to licence purchase. Dealers who have showrooms can demonstrate the driver for free via the Chowmain Dealer Showroom Licence. You can apply for this licence via the [Chowmain website](#). Please follow the steps below. If you encounter any issues please submit a ticket via the driverCentral website.

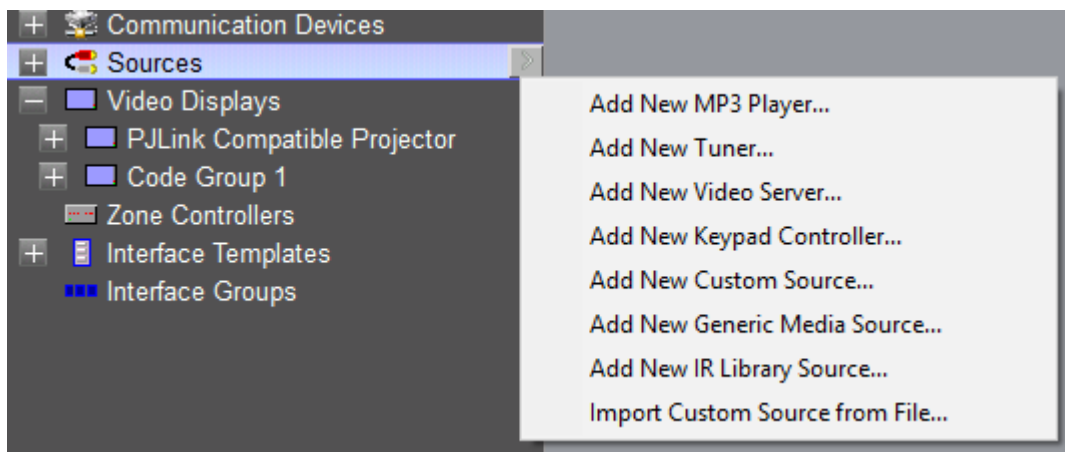
Installation Process

Prior to driver installation please install the [Zank Remote application from Google Play store](#) on the Android TV Box and follow their setup instructions. It is important that you do this as without correct setup you will not be able to control the Android TV Box.

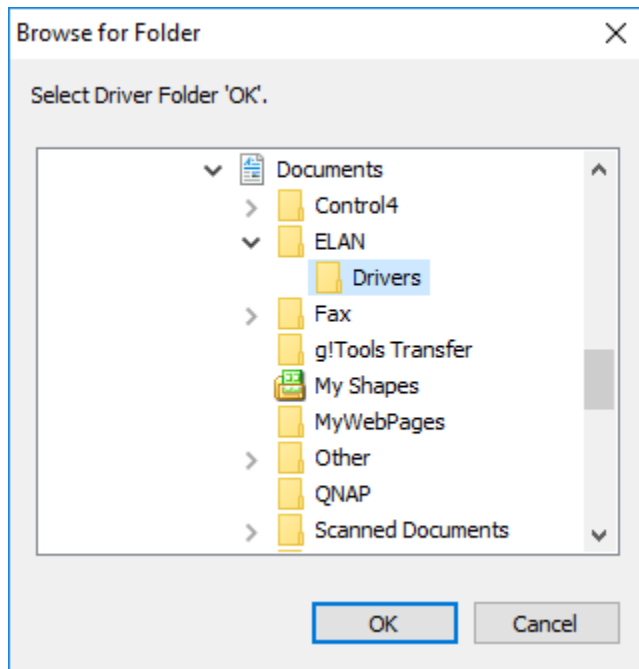
1. Download the latest version of the driver from our distributor [driverCentral](#).
2. Extract the file to your preferred ELAN driver storage location.
3. In configurator click on the Media tab



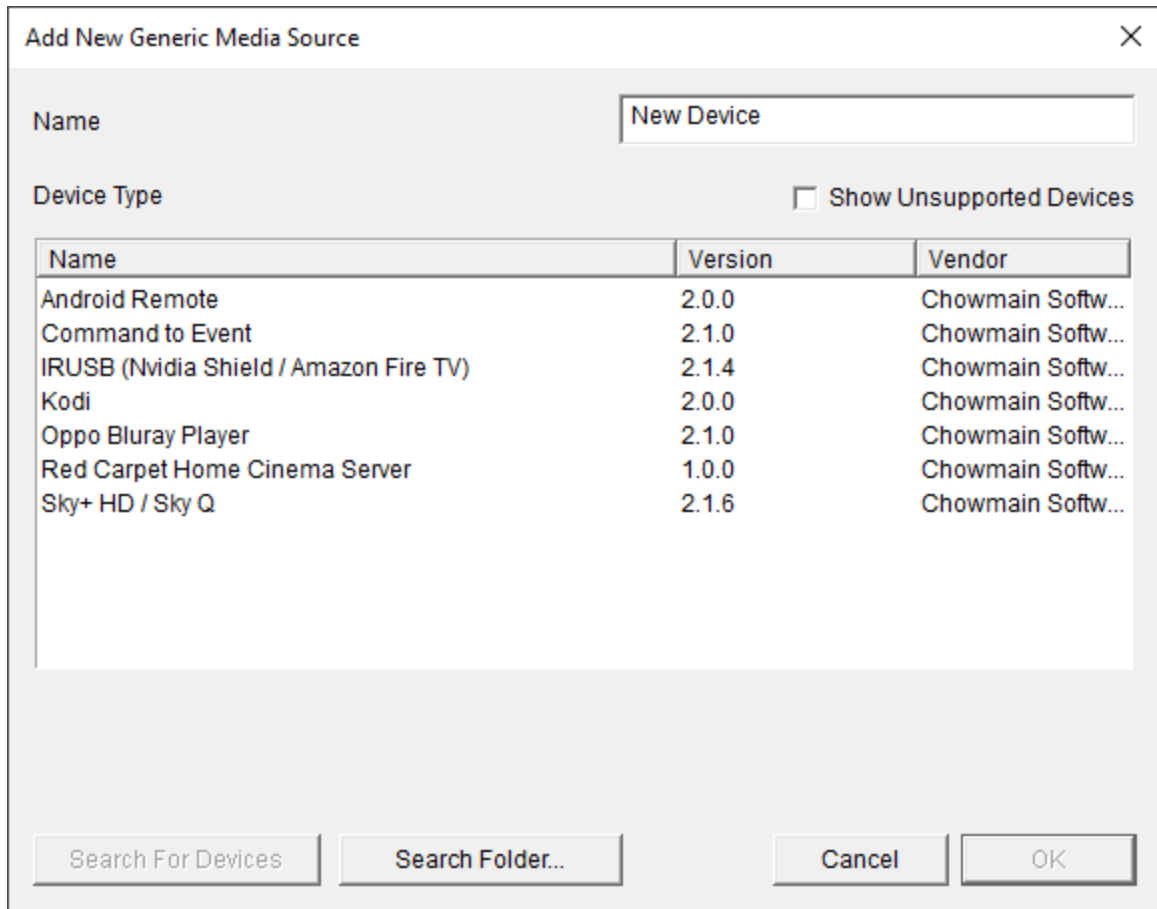
4. Click on the arrow next to Sources Devices
5. Click on Add New Generic Media Source



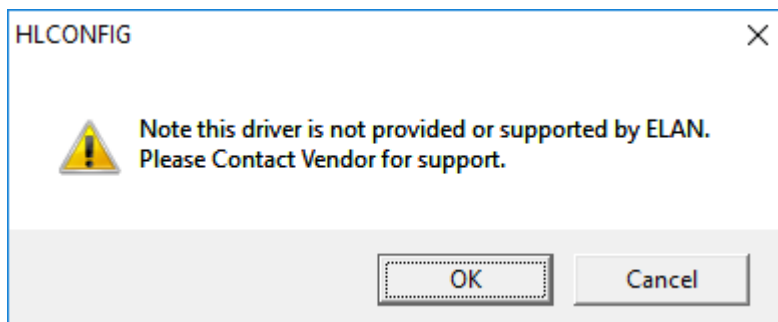
6. Click on the Search Folder button
7. Select your driver folder and press ok




8. Select the Android Remote driver.



9. Configurator will warn you that the driver is not provided or supported by Elan. Click on OK.



10. Highlight the Android Remote driver with the  symbol next to it.
11. The driver will advise you that you have 90 days to test the driver out. If you have purchased an activation key please type it in here then click on Apply.

Activation Key	
Activation Status	TRIAL - 48 HOURS REMAINING

12. Note that if you have typed in a valid activation key your status will change to ACTIVATED (you need to click off of the driver onto something else and back again to see the changes to the status).

Activation Status	ACTIVATED
-------------------	-----------

13. Select the control method you want to use. This changes the remote control commands the driver sends.
 - a. Zank Default – This is a faster control method but does not work for all apps.
 - b. ADB – This will work on all apps but is slower than Zank Default

Control Method	Zank Default
IP Address	Zank Default
Port	ADB

14. Enter the IP Address of the Android box.

IP Address	172 . 16 . 16 . 196
------------	---------------------

15. Click on each Page Layout and modify to delete the apps buttons/images not used or modify each interface to suit other applications which you may want to use. Note other applications have been added as Universal Functions as well so please choose the apps your customer wants.
16. Expand on your Video Display or your Zone Controller

17. Click on the input you want to configure

18. Assign the Android Remote driver as the source device

19. Congratulations you have successfully setup the Android Remote driver for ELAN.

g! CONFIGURATION DETAILS

The following table provides settings used in Configurator when connecting to Android TV devices. Please refer to the Configurator Reference Guide for more details.

Devices	Variable Name	Setting	Comments
Generic Media Device (Android Remote)	Name	<User Defined>	
	System #	<Auto Detect>	
	Driver Version	<Auto Detect>	
	Driver Vendor	Chowmain Software & Apps	
	Device Type	Android Remote	
	Activation Key	<User Defined> This is the driverCentral activation Key	See Note 1
	Activation Status	<Auto Detect> This provides the licence status feedback	See Note 1
	Control Method	<User Defined> This defines what command set to send with button presses.	See Note 2
	IP Address	<User Defined> This is the IP Address of the Android Box.	See Note 3

Notes:

1. The driver requires a valid licence for use. Licences can be purchased from the driverCentral website. All of the licences are site licences. This means that you can use as many instances of the driver as you want in a single system with the one licence. The driver also comes with a built in 90 day trial. The driver will provide feedback as to the state of the licence in the Activation Status field.
2. Control Method - This changes the remote control commands the driver sends.
 - a. Zank Default – This is a faster control method but does not work for all apps.
 - b. ADB – This will work on all apps but is slower than Zank Default
3. This is the IP Address of the Android Box. Please make sure that it is on a static IP address or reservation. Change of IP address will result in loss of control.

COMMON MISTAKES

1. IP Address needs to be on a static IP address or IP reservation
2. [Zank Remote app](#) on Android TV Device must be installed and configured correctly
3. Developer Mode on Android TV device is not enabled and/or USB debug is not enabled.

ELAN DEVELOPER PARTNER INFORMATION

This ELAN driver was written and supported by:



<http://www.chowmainsoft.com>