

Integration Note

Manufacturer:	TP-Link
Model Number(s):	HS1XX HS2XX LB2XX (white and tunable white)
g! Core Module Version:	g!8.2
Driver Developer:	Chowmain Software & Apps
Document Revision Date:	January 3, 2017

Overview & Supported Features

Chowmain has integrated the range of TP-Link Wifi based Smart Home products into ELAN with two way control and feedback. This provides easy to retrofit solutions for outlet control, inwall switch control and also LED bulb control. The hardware is extremely affordable with outlets starting at \$24.99 MSRP, bulbs at \$19.99 MSRP and light switches at \$39.99 MSRP. It definately adds value to any ELAN installation.

THE FOLLOWING OPTIONS ARE SUPPORTED BY THE TP-LINK DRIVER:

- Support for the Kasa Outlets with On/Off control/feedback
- Support for energy monitoring on Kasa Outlets with Energy (this is used to fire event maps when it goes above or below a certain level – useful for turning on AV devices like Playstations, Xbox's and more when it changes from an idle state to an on state).
- Support for the Kasa In-wall Switches with On/Off control/feedback
- Support for the White and Tunable White bulbs with On/Off/Dimming/Color Temp control/feedback

THE FOLLOWING OPTIONS ARE NOT SUPPORTED BY THE TP-LINK DRIVER:

- Color bulbs do not have control/feedback over color
- Device discovery is not supported – Devices will need to be assigned an IP reservation

Any feature not specifically noted as supported should be assumed to be unsupported.
--

TP-Link Configuration

Each TP-Link device will need to be installed and connected to the wifi network first prior to driver setup via the iOS or Android Kasa application. Discovery is not supported so IP reservations need to be set up in the router for each device.

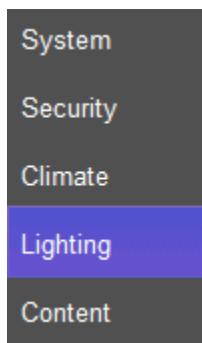
g! Configuration

This driver will provide control and feedback for TP-Link outlets and bulbs on your network. The driver requires a valid licence for use. Licences can be purchased from Chowmain's distributor [driverCentral](#). Customers can also trial the driver out for 7 days prior to licence purchase. Dealers who have showrooms can demonstrate the driver for free via the Chowmain Dealer Showroom Licence. You can apply for this licence via the [Chowmain website](#). Please follow the steps below. If you encounter any issues please submit a ticket via the [driverCentral](#) website.

Installation Process

Once you have physically installed your Big Ass Fan or Light and have connected it via wifi to your network please follow the steps below.

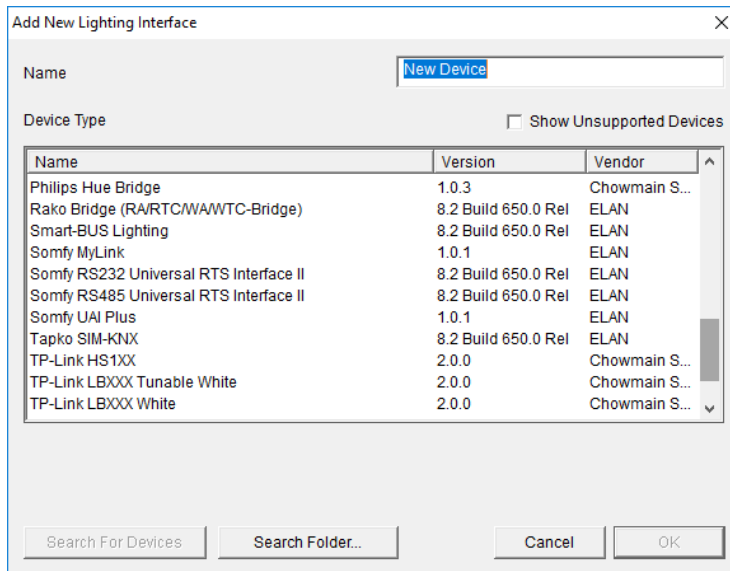
1. Download the latest version of the driver from our distributor [driverCentral](#).
2. Extract the file to your preferred ELAN driver storage location.
3. In configurator click on the Lighting tab



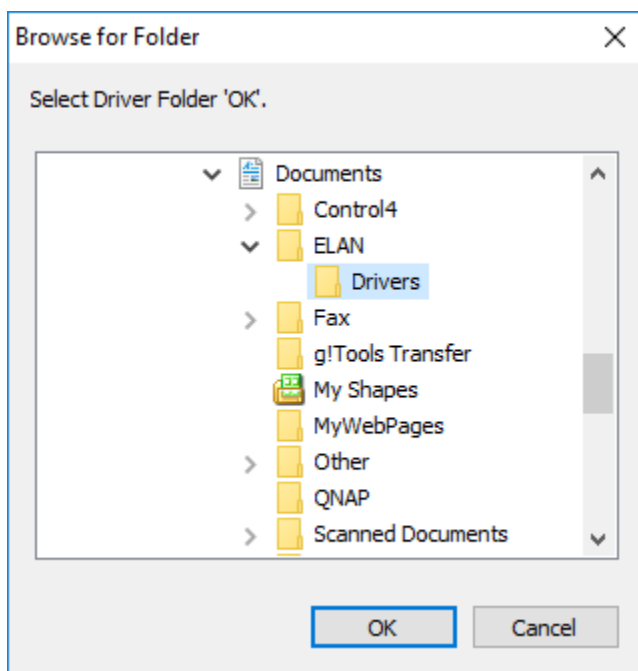
4. Click on the arrow next to Lighting Interfaces
5. Click on Add New Lighting Interface



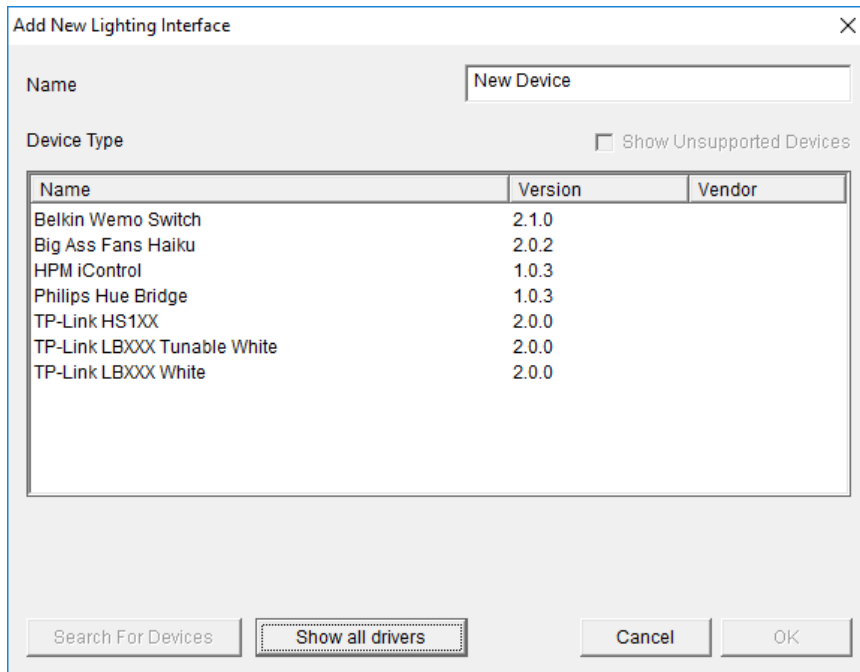
6. Click on the Search Folder button



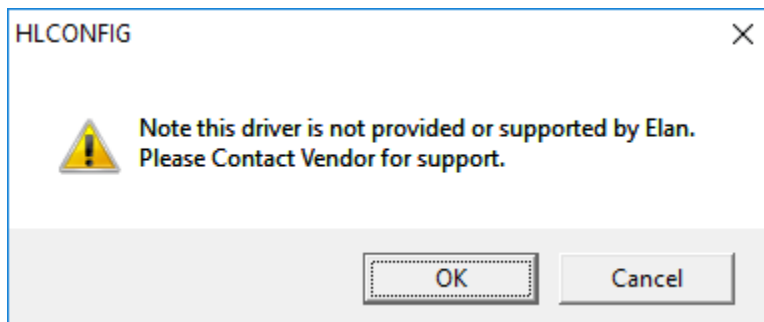
7. Select your driver folder and press ok



8. Select the suitable TP-Link driver and press ok



9. Configurator will warn you that the driver is not provided or supported by Elan. Click on OK.



10. The driver will advise you that you have 48 hours to test the driver out. If you have purchased an activation key please type it in here then click on Apply and lastly Activate Licence.

Activation Key	
Activation Status	TRIAL - 48 HOURS REMAINING

11. Note that if you have typed in a valid activation key your status will change to ACTIVATED (you need to click off of the driver onto something else and back again to see the changes to the status).

Activation Status	ACTIVATED
-------------------	-----------

12. Type in the IP Address of your TP-Link device and press the Apply button


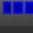
IP Address	172 . 16 . 16 . 223
------------	---------------------

13. If the driver can communicate to the TP-Link device it will then pull in the device with the name from the network.

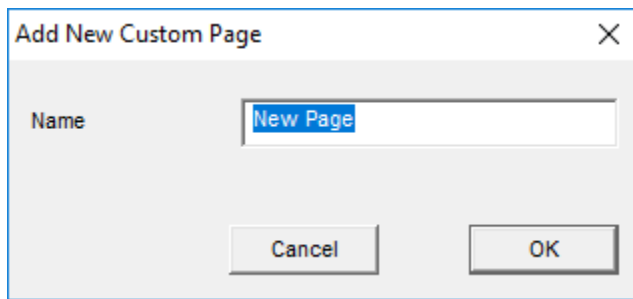
14. Now we have to create a custom page to display the device.

15. Click on the arrow next to Custom Pages

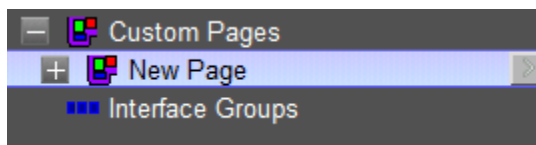
16. Click on Add New Custom Page

<ul style="list-style-type: none">  Schedule  Custom Pages  Interface Groups 	<input type="button" value="Add New Custom Page..."/>
--	---

17. Type a name for the page

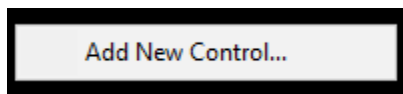


18. Click on the + symbol next to your new custom page to expand it

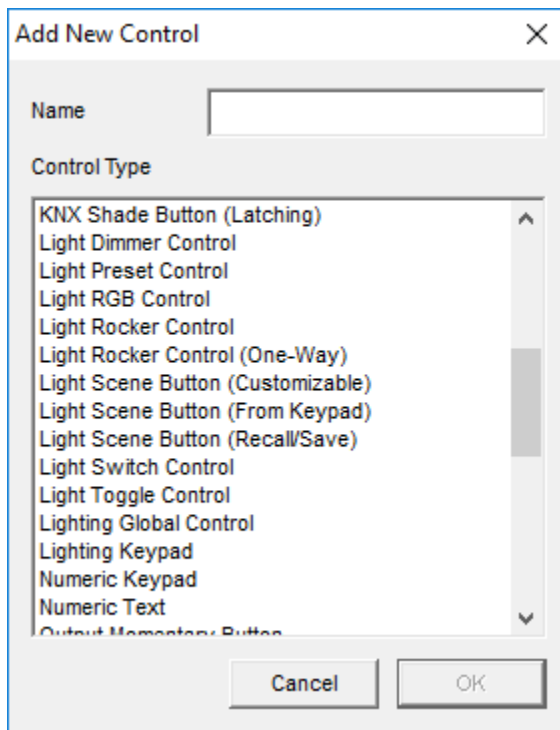


19. Select the format you want to create your page for (you may need to create for all 3 formats).

20. Right click on the page and 'Add New Control'

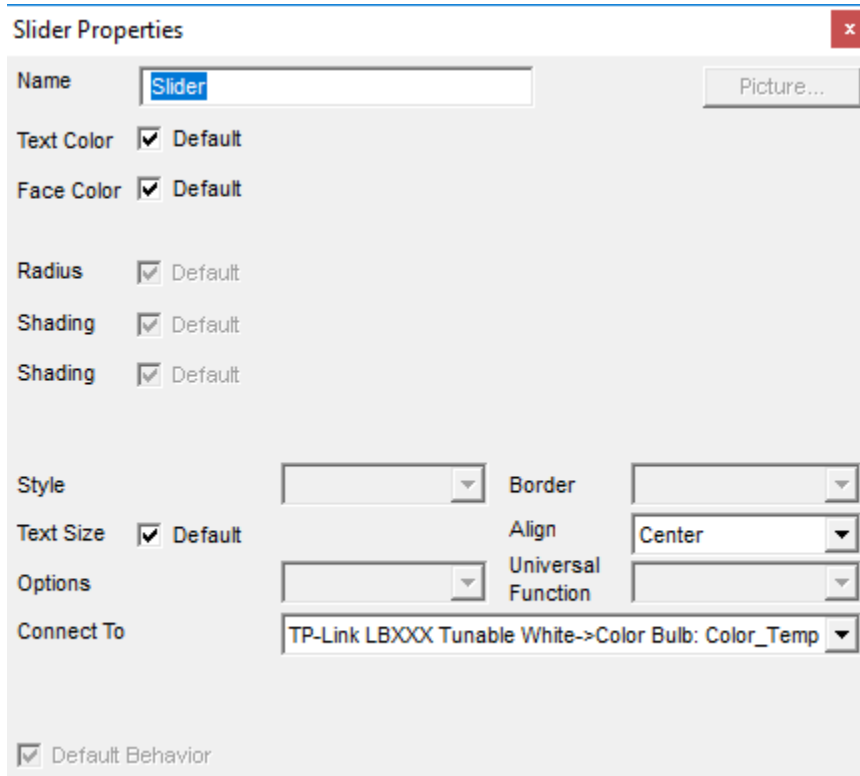


21. It will now prompt you for the control type



22. You can utilize the following controls
- a. Light Switch Control – All Outlets (for on/off)
 - b. Light Toggle Control – All Outlets (for on/off)
 - c. Light Dimmer Control – All Bulbs (for brightness)
 - d. Slider- Tunable White Bulb (for color temperature)
23. Right click on the control and click on Show properties

24. Click on the Connect to drop down box and select the device you want to tie in.



Slider Properties

Name:

Text Color: ☒ Default

Face Color: ☒ Default

Radius: ☒ Default

Shading: ☒ Default

Shading: ☒ Default

Style: Border:

Text Size: ☒ Default Align:

Options: Universal Function:

Connect To:

☒ Default Behavior

25. Congratulations you have successfully setup the TP-Link driver for ELAN.

g! CONFIGURATION DETAILS

The following table provides settings used in Configurator when connecting to TP-link devices. Please refer to the Configurator Reference Guide for more details.

In the table below:

- "<User Defined>", etc. Type in the desired name for the item.
- "<Auto Detect>", etc. The system will auto detect this variable.

Devices	Variable Name	Setting	Comments
Lighting Interface (TP-Link)	Name	<User Defined>	
	System #	<Auto Detect>	
	Driver Version	<Auto Detect>	
	Driver Vendor	Chowmain Software & Apps	
	Device Type	TP-Link XXXXX	
	Activation Key	<User Defined> This is the driverCentral activation Key	See Note 1
	Activation Status	<Auto Detect> This provides the licence status feedback	See Note 1
	IP Address	<Auto Detect>	
	Port	<Auto Detect>	
Devices	Variable Name	Setting	Comments
Lighting Device (On/Off)	Name	<User Defined>	

Device)			
	System #	<Auto Detect>	
	Device Type	On/Off Device	
	Hide Device from Scheduler	<User Defined> Yes / No	
	DO NOT Delete	<User Defined / Auto imported> Don't touch this	See Note 2

Notes:

1. The driver requires a valid licence for use. Licences can be purchased from the driverCentral website. All of the licences are site licences. This means that you can use as many instances of the driver as you want in a single system with the one licence. The driver also comes with a built in 7 day trial. The driver will provide feedback as to the state of the licence in the Activation Status field.
2. This is used as an identifier for the driver. Do not modify this from the default value of 1

COMMON MISTAKES

1. This driver requires an IP reservation be set up so the IP address does not change
2. This driver does not control color. It will work on color bulbs for brightness and color temp though.

ELAN DEVELOPER PARTNER INFORMATION

This ELAN driver was written and supported by:



<http://www.chowmainsoft.com>