

## Integration Note

Manufacturer:	<b>Chowmain</b>
Model Number(s):	<b>Command to Event</b>
g! Core Module Version:	<b>g!8.2</b>
Driver Developer:	<b>Chowmain Software &amp; Apps</b>
Document Revision Date:	January 16, 2018

## Overview & Supported Features

Chowmain's Command to Event driver for ELAN allows ELAN programmers to override existing remote control buttons to fire event maps.

This lets the programmers to be more creative in the solutions they provide their customer's to add extra functionality.

For example they can make a one way IR bluray driver dim lights when the play, pause or stop buttons are pressed on the remotes.

Another example is that they can assign a hard button to toggle a light on and off or perhaps create a macro to execute a sequence of commands.

### Features

- Support for every universal function / command.
- Ability to override commands on a source to fire events.

### Can you give us some examples of how we could use this driver?

- Events can be programmed to fire any command or sequence of commands.
  - Example – A hard button can be mapped to a light toggle command
- Events can be programmed to fire the default remote button along with firing any other command
  - Example - Bluray play command fires Bluray play along with turning off lights or pause command fires pause command along with turning on lights.
  - Example – Number buttons can fire different lighting scenes to suit the customer's mood.

### Do you offer showroom discounts?

We offer dealers a free showroom licence for demonstration and educational purposes. See link below for T&C's and signup procedure.

[Chowmain Dealer Showroom FAQ](#)

**I want to try this driver out before buying it?**

All Chowmain drivers for ELAN come with a 7 day trial. This is activated once you add the driver to the project (internet required). No additional steps are necessary.

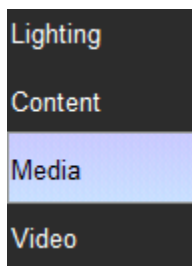
Any feature not specifically noted as supported should be assumed to be unsupported.
--

## g! Configuration

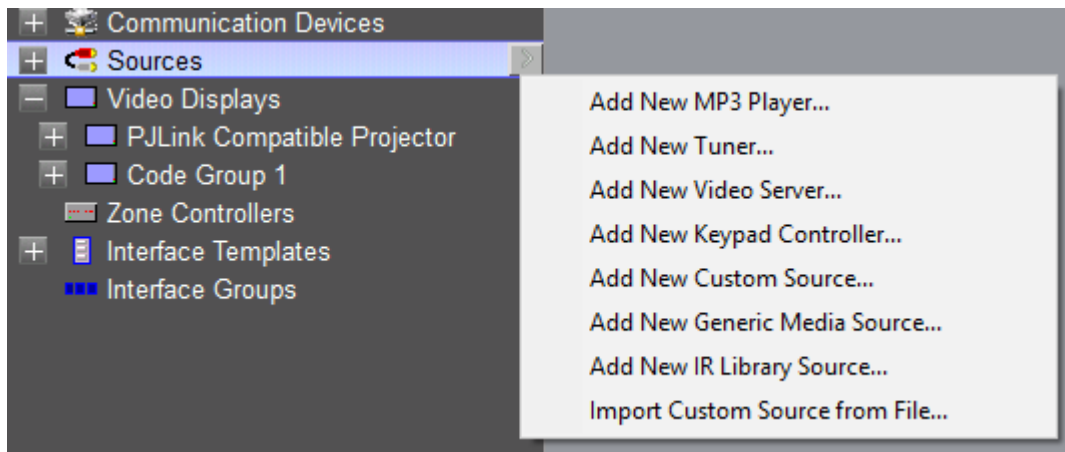
The driver requires a valid licence for use. Licences can be purchased from Chowmain's distributor [driverCentral](#). Customers can also trial the driver out for 7 days prior to licence purchase. Dealers who have showrooms can demonstrate the driver for free via the Chowmain Dealer Showroom Licence. You can apply for this licence via the [Chowmain website](#). Please follow the steps below. If you encounter any issues please submit a ticket via the driverCentral website.

## Installation Process

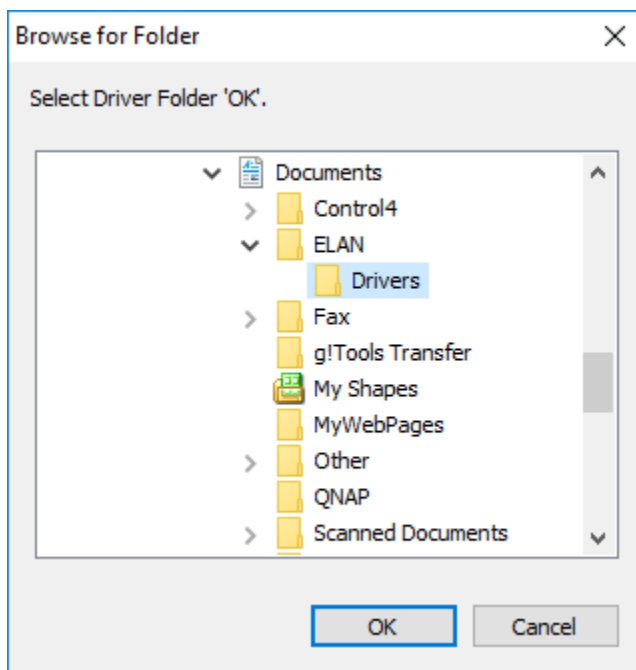
1. Download the latest version of the driver from our distributor [driverCentral](#).
2. Extract the file to your preferred ELAN driver storage location.
3. In configurator click on the Media tab



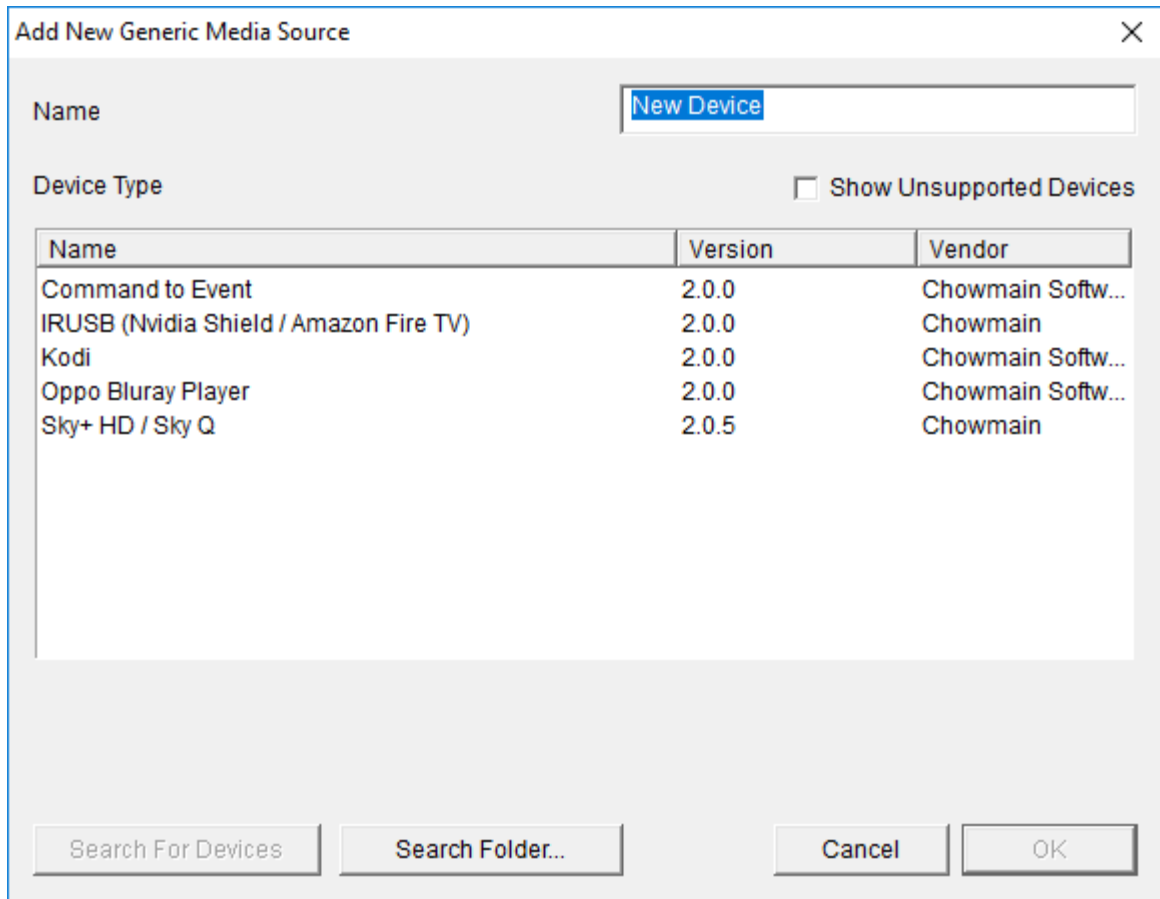
4. Click on the arrow next to Sources Devices
5. Click on Add New Generic Media Source



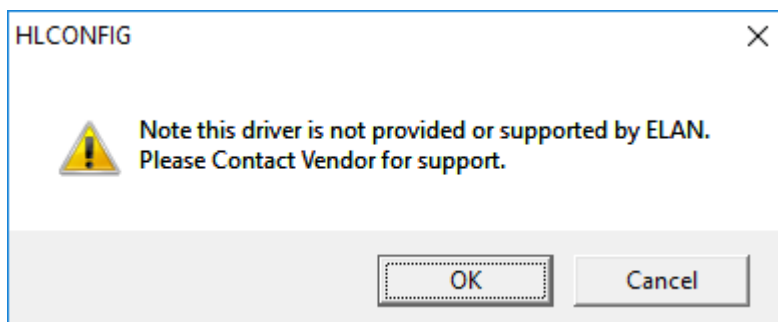
6. Click on the Search Folder button
7. Select your driver folder and press ok




8. Select the Command to Event driver.



9. Configurator will warn you that the driver is not provided or supported by Elan. Click on OK.




10. Highlight the Command to Event driver with the  symbol next to it.
11. The driver will advise you that you have 7 days to test the driver out. If you have purchased an activation key please type it in here then click on Apply.

Activation Key	<input type="text"/>
Activation Status	TRIAL - 48 HOURS REMAINING

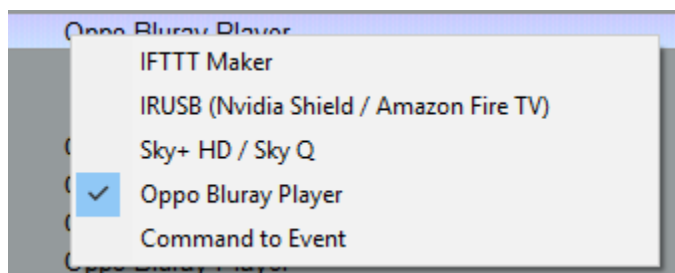
12. Note that if you have typed in a valid activation key your status will change to ACTIVATED (you need to click off of the driver onto something else and back again to see the changes to the status).


Activation Status	ACTIVATED
-------------------	-----------

13. Highlight the source you want to override the buttons for with the  symbol next to it.
14. Right click on the behavior of the button you want to override. You will notice that it will change from Default to Override

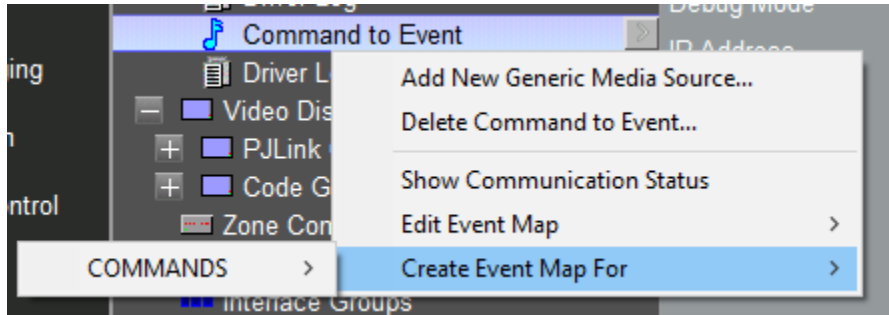
Enter	Override
-------	----------

15. Right click on the Output Device to change it from the current Source to the Command to Event driver.



16. Right click on the Output Code/Command and select the corresponding code. Note we recommend using the same name as the Incoming Button to ensure you do not forget what you have assigned it to.
17. Right click the Command to Event driver with the  symbol next to it.

18. Select Create Event Map For -> COMMANDS -> The command you want to create the event map for.



19. Include the original command if required

**Edit Event Map** [X]

Name:  System #:

Events (ANY Event Specified can execute commands, if conditions are met)

Sub-System	Type	Family	Sys #
Command to Event	COMMANDS: Enter	Generic Device	11537

Add... Remove

Conditions (ALL Conditions specified must be met for Commands to Execute)

Sub-System	Type	Family	Sys #	State
------------	------	--------	-------	-------

Add... Remove

Commands (ALL Commands will execute if Event occurs and Conditions are met)

Sub-System	Type	Family	Sys #
Sky+ HD / Sky Q: Enter	Execute Function	Media Source	10233

Add... Remove Move Up Move Down

Test All Commands Copy Commands Paste Commands

20. Add additional functionality to the command to make it smarter

**Edit Event Map** [X]

Name:  System #:

Events (ANY Event Specified can execute commands, if conditions are met)

Sub-System	Type	Family	Sys #
Command to Event	COMMANDS: Enter	Generic Device	11537

[Add...]  
[Remove]

Conditions (ALL Conditions specified must be met for Commands to Execute)

Sub-System	Type	Family	Sys #	State
------------	------	--------	-------	-------

[Add...]  
[Remove]

Commands (ALL Commands will execute if Event occurs and Conditions are met)

Sub-System	Type	Family	Sys #
Sky+ HD / Sky Q: Enter	Execute Function	Media Source	10233
Switch/Dimmer: WeMo Switch	Toggle Switch State	Lighting System	10188

[Add...]  
[Remove]  
[Move Up]  
[Move Down]

[Test All Commands] [Copy Commands] [Paste Commands]

21. Congratulations you have added event maps to hard buttons.

## g! CONFIGURATION DETAILS

The following table provides settings used in Configurator. Please refer to the Configurator Reference Guide for more details.

Devices	Variable Name	Setting	Comments
Generic Media Device	Name	<User Defined>	
	System #	<Auto Detect>	
	Driver Version	<Auto Detect>	
	Driver Vendor	Chowmain Software & Apps	
	Device Type	Command to Event	
	Activation Key	<User Defined> This is the driverCentral activation Key	See Note 1
	Activation Status	<Auto Detect> This provides the licence status feedback	See Note 1
	Debug Mode	<User Defined> This sets the logging for the driver.	See Note 2



**Notes:**

1. The driver requires a valid licence for use. Licences can be purchased from the driverCentral website. All of the licences are site licences. This means that you can use as many instances of the driver as you want in a single system with the one licence. The driver also comes with a built in 7 day trial. The driver will provide feedback as to the state of the licence in the Activation Status field.
2. Debug Mode – This is used for troubleshooting. By default it is set to off. print is used by technical support for live troubleshooting. log is used to output to the driver log. Print and log is used to provide technical support with live troubleshooting and log to driver log at the same time.

**COMMON MISTAKES**

1. You need to override the remote control button per source for each event map.
2. You may need multiple instances of the Command to Event driver if you run out of events.

**ELAN DEVELOPER PARTNER INFORMATION**

This ELAN driver was written and supported by:



<http://www.chowmainsoft.com>