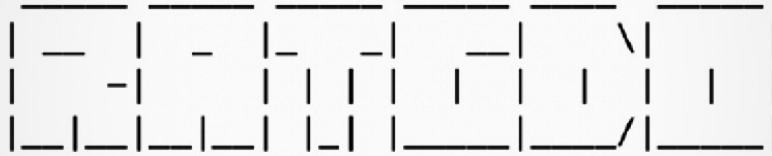


Ratgdo Installation and Usage Guide



Version: 1.0.0.0
Date: Tuesday, March 12, 2024
Authors: Tony Chen

chowmainsoft

Contents

Overview.....	3
Features.....	4
Installation.....	5
preparing for Installation.....	5
Standard Installation.....	5
Control.....	8
Sequences.....	11
Events.....	11
Offline.....	13
Why is this product so exciting?.....	14
What garage doors will this work on?.....	14
How does the motion sensors and obstruction sensors work?.....	14
What is the remote control lock?.....	14
Help i cannot use my garage door RF remote anymore.....	14
How do i install Ratgdo hardware?.....	15
How does the driver talk to Ratgdo?.....	15
Do i need to install reed switches for garage door position feedback?.....	15
Where can i purchase Ratgdo?.....	15

Overview

ratgdo is a WiFi control board for your garage door opener that works over your local network. No subscriptions required.

ratgdo connects to your door opener with three simple wires and works with virtually any residential Chamberlain or Liftmaster manufactured garage door opener and also offers basic support for other brands which use dry contacts to control the door.

It can control the door and report back the actual status of the door (closed, opening, open, closing). For Security + 2.0 door openers, the obstruction sensors, light, wireless lockout and even motion sensing are also integrated.

As a local based integration if there is internet disruptions you will still have control / feedback over your garage door through Crestron Home.

Features

- IP Control
- Support for motors with discrete open/close and for motors that only support toggle.
- Ability to lock the RF remotes for added security
- Feedback on when the last time the Motion Detector was tripped
- Feedback on when the last time the Obstruction was tripped
- Feedback on when the last time the motor was opened
- Feedback on when the last time the motor was closed
- Extension driver with a custom UI
 - Toggle Door
 - Open / Close (if supported)
 - Stop
 - Lock/Unlock Remote
 - Light On/Off
- The driver has the following Actions
 - Open
 - Close
 - Stop
 - Toggle
 - Light On
 - Light Off
 - Remote Lock
 - Remote Unlock
- Events
 - Opened
 - Closed
 - Door In Motion
 - Light On
 - Motion
 - Obstruction
 - Remote Locked
 - Remote Unlocked

Installation

preparing for Installation

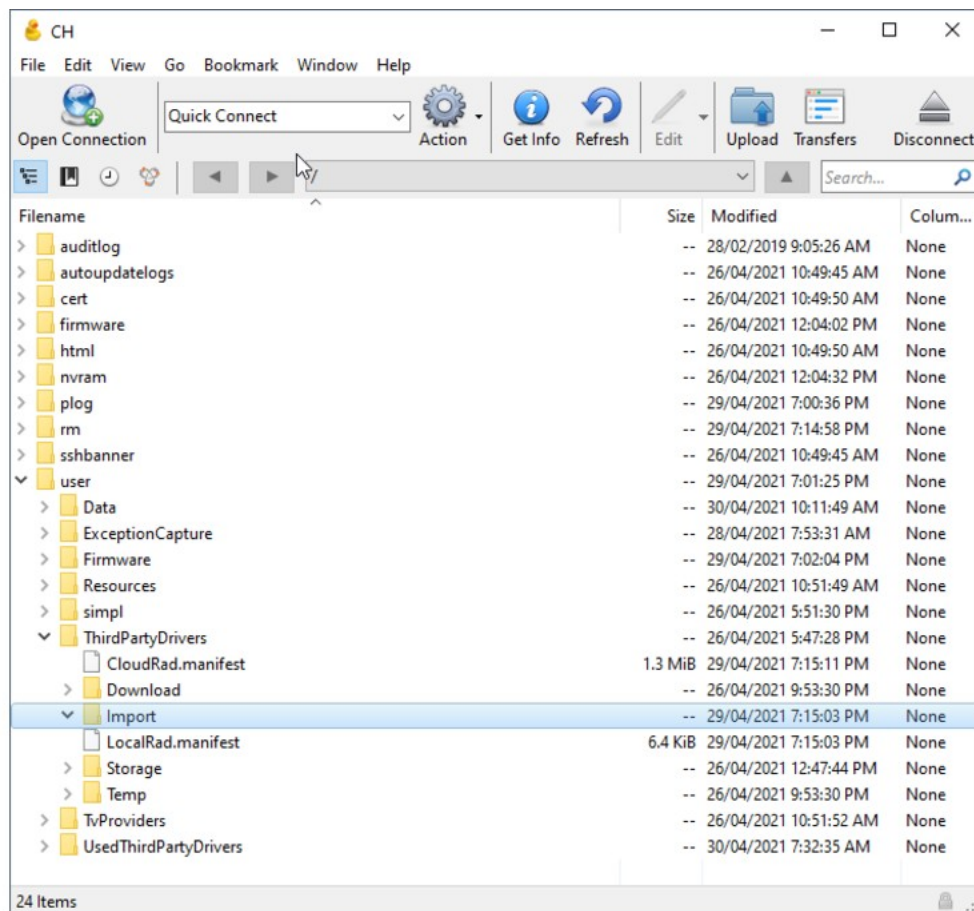
- Before connecting the Ratgdo to the garage door, you will need to flash the [ESPHome firmware by following the instruction](#).
- Once the firmware has successfully flashed, reserve the IP address of the Ratgdo as static address on your network.
- The Ratgdo can now be connected to the garage door motor [by following the instruction](#).

Standard Installation

This driver is only available for manual installation.

To manually install you will need to copy the driver (.pkg file) on to your Crestron Home processor.

You will first need to make a SFTP connection to the processor, you can do that with software like Cyberduck or Filezilla. Once you are connected you will need to unzip the ZIP file and copy the PKG file to the /user/ThirdPartyDrivers/Import folder. With this done you can go back to the Standard Installation steps.



To find the driver you need to go into

1. Pair Devices

2. Drivers
3. Garage Door
4. Ratgdo
5. Enter the device details

Pair Devices CRESTRON HOME

Configure 'Ratgdo'

Please enter TCP/IP settings:

TCP/IP settings	Value
IP Address	127.0.0.1
IP Port	80

Cancel Next

7. Enter your Chowmain Licence

Pair Devices CRESTRON HOME

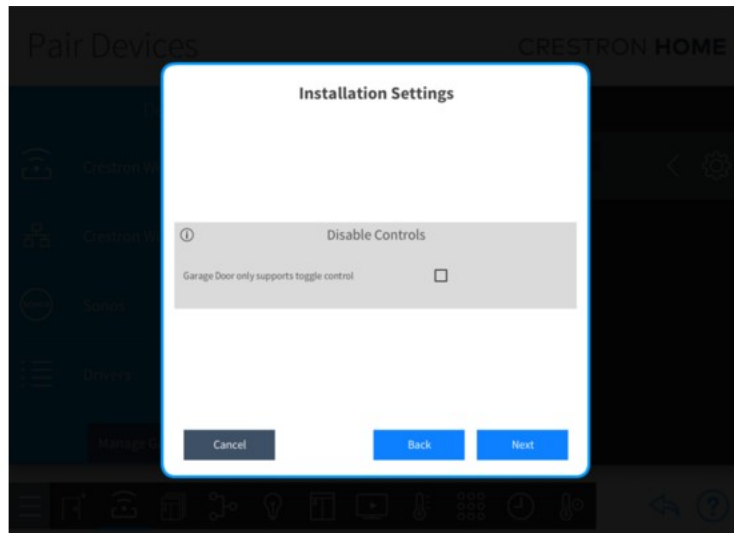
Installation Settings

Chowmain Licence

Please enter a Licence Code

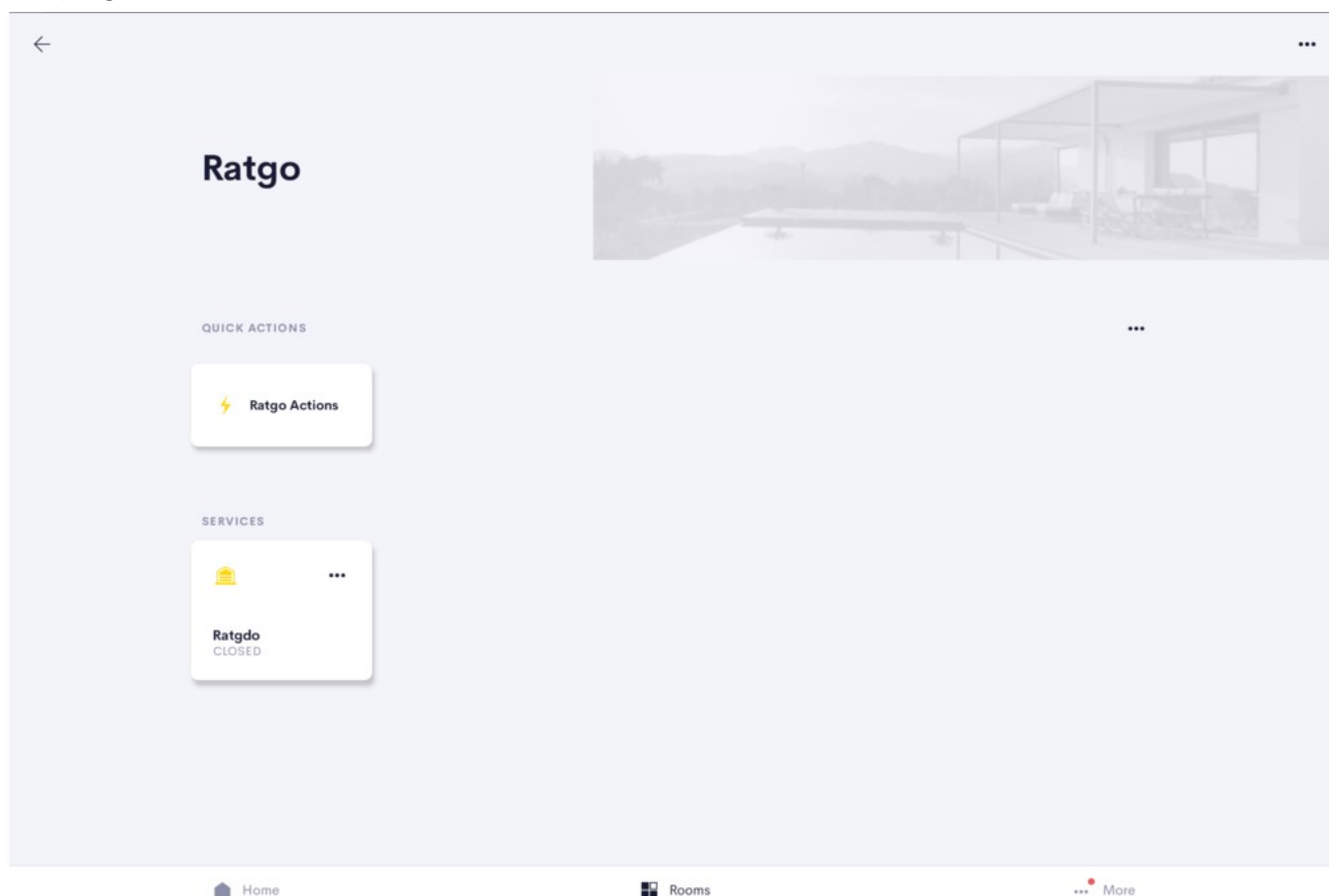
Cancel Back Next

8. Enable or disable the opening/closing control. (only operational in some models)



Control

To control the garage door, you can click on the tile of the added driver in its assigned room. This action will toggle the garage door. Alternatively, you can access the expanded control view by clicking the three dots in the top right corner of the tile.

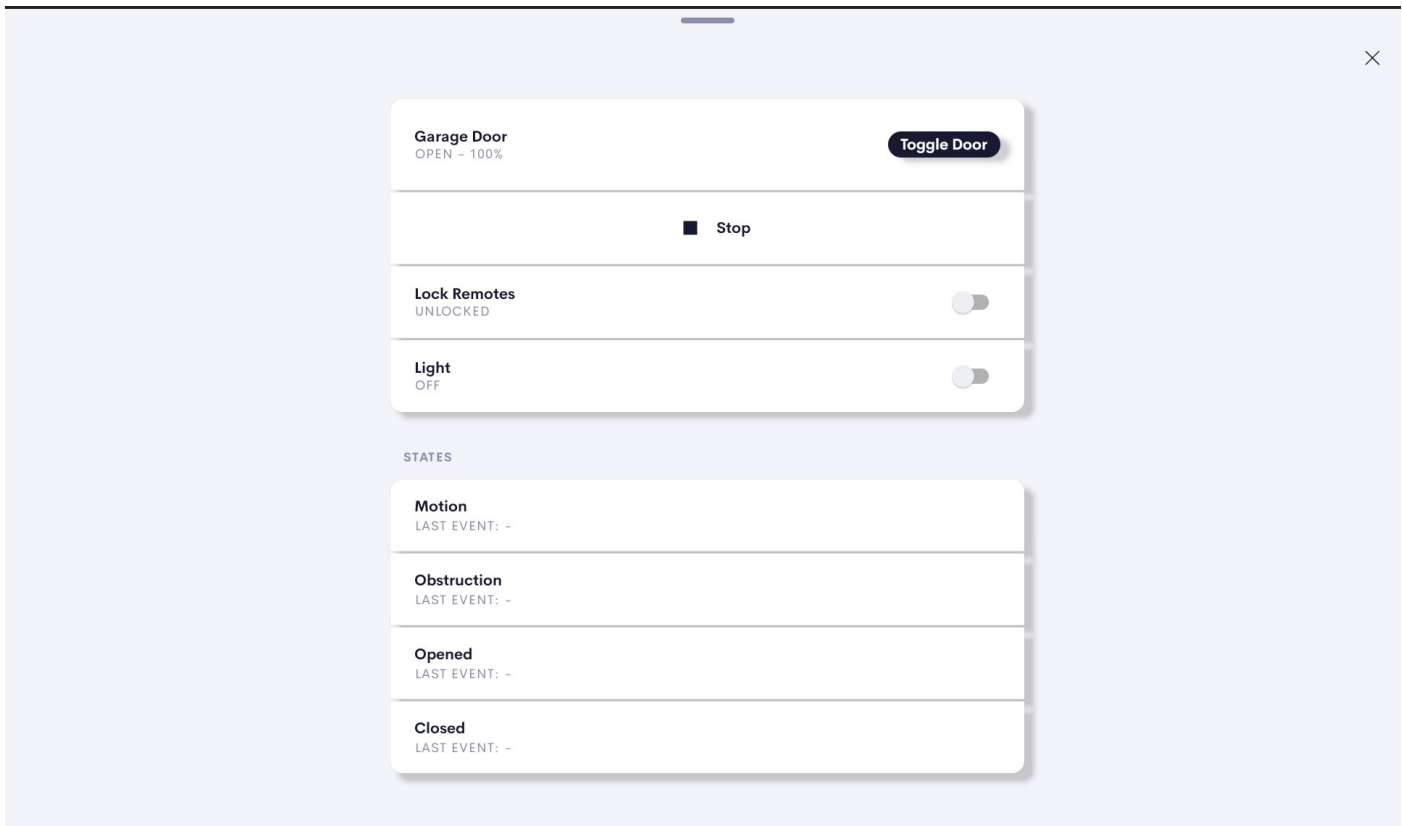


In the expanded control view, the following actions are available for control.

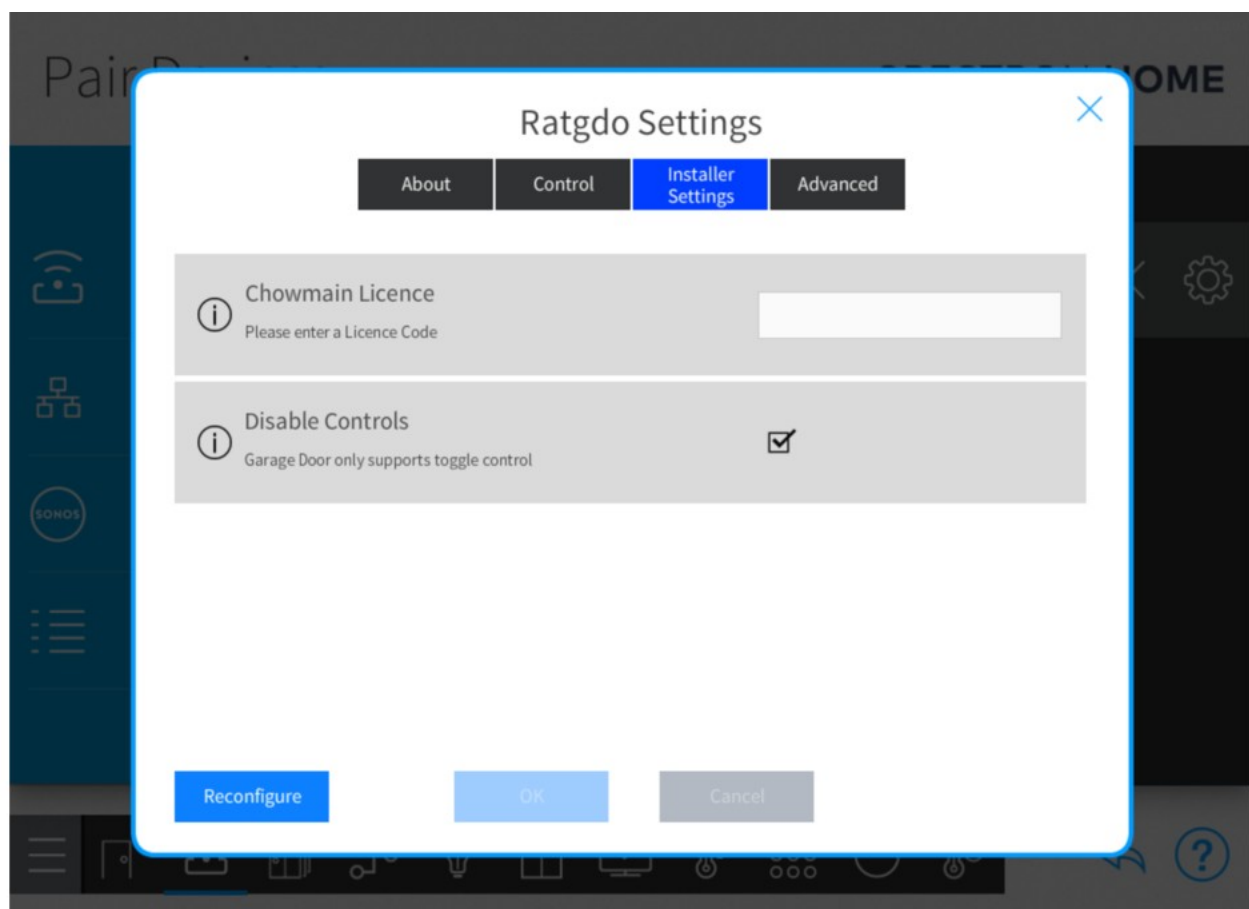
- Toggle Garage Door
- Garage Door Position Slider
- Garage Door Open
- Garage Door Close
- Garage Door Stop
- Lock the Remote
- Unlock the Remote
- Turn On Light
- Turn Off the Light

The device states available on display

- Motion Event
- Obstruction Event
- Opened Event
- Closed Event



Note: The Position Slider, Open and Close Control functions will only be accessible when the 'Enable Control' checkbox is selected on the settings page.





Garage Door
OPEN - 100%



↑ Open

■ Stop

↓ Close

Lock Remotes
UNLOCKED



Light
OFF



STATES

Motion

LAST EVENT: -

Obstruction

LAST EVENT: -

Opened

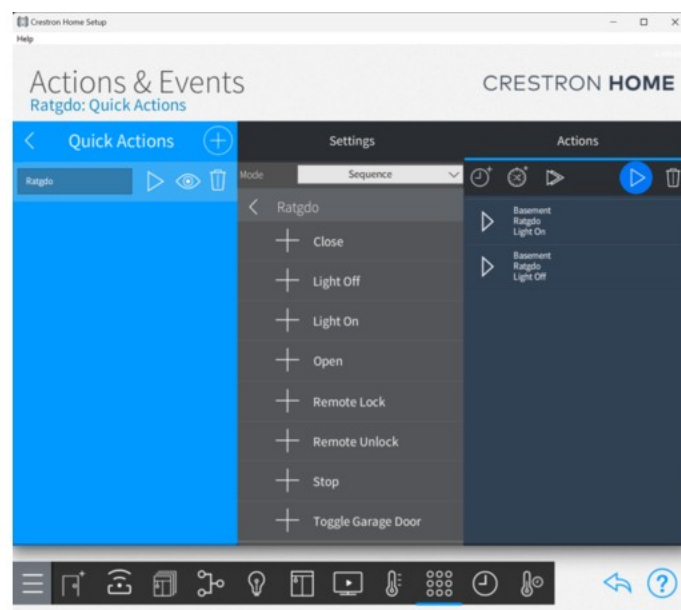
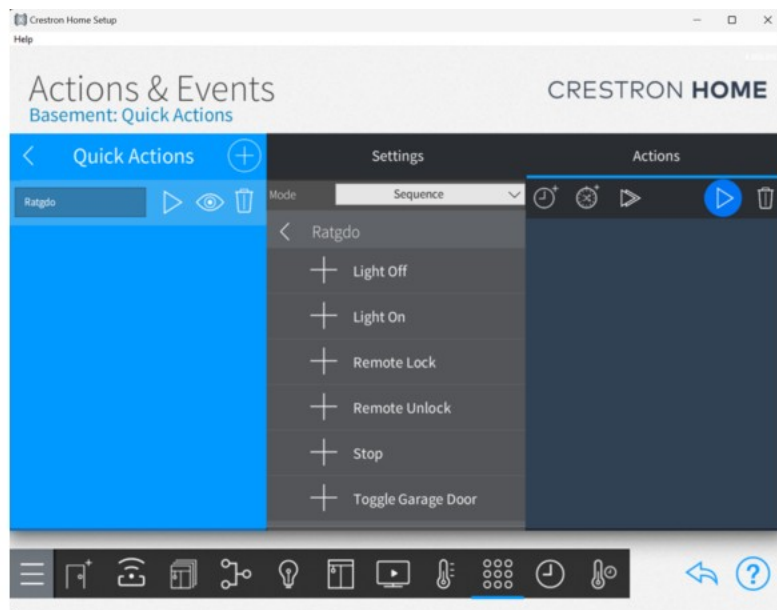
LAST EVENT: -

Closed

LAST EVENT: -

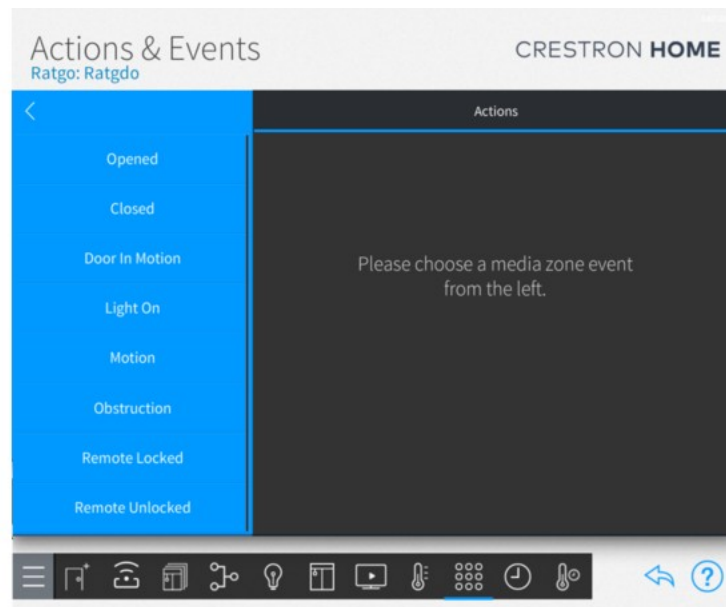
Sequences

Toggle Garage Door and Stop functions of the Ratgdo are available to use in sequences. Open and Close will be accessible once the 'Disable Controls' checkbox is unchecked in the Installation Settings.



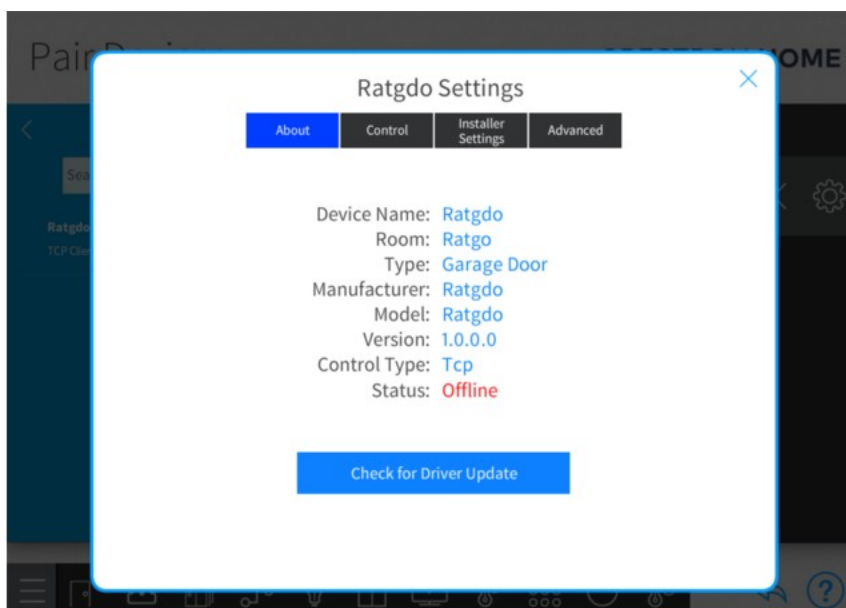
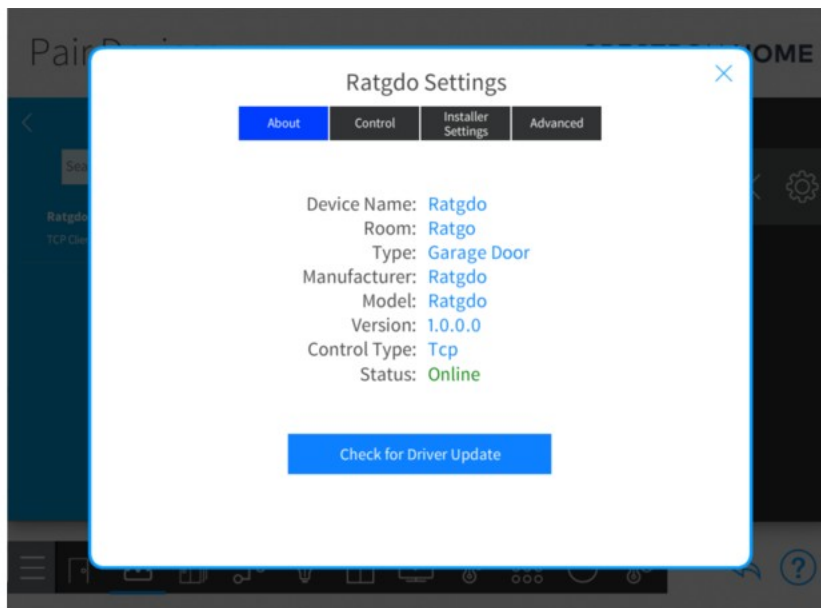
Events

Opened, Closed, Door In Motion, Light On, Motion, Obstruction, Remote Locked and Remote Unlocked are available as Events.



Offline

If the driver loses connection to the Ratgdo device, it will be displayed as offline. The driver will attempt to reconnect, and if successful, it will automatically change back to being online.



Why is this product so exciting?

Ratgdo is a WiFi control board for your garage door opener that works over your local network. No subscriptions required.

Ratgdo connects to your door opener with three simple wires and works with virtually any residential Chamberlain or Liftmaster manufactured garage door opener and also offers basic support for other brands which use dry contacts to control the door.

It can control the door and report back the actual status of the door (closed, opening, open, closing). For Security + 2.0 door openers, the obstruction sensors, light, wireless lockout and even motion sensing are also integrated.

As a local based integration if there is internet disruptions you will still have control / feedback over your garage door through Crestron Home.

What garage doors will this work on?

Any residential door opener manufactured Chamberlain/Liftmaster which has a yellow learn button except for wall mounted jackshaft openers with model # 8500, 8500C, RJ020 or RJ020C

A matrix of known / tested compatible garage doors can be found via link below.

[Ratgdo wiki](#)

How does the motion sensors and obstruction sensors work?

- Motion detection requires a wall control panel with a built in motion detector such as the 889LM.
- Obstruction Status requires Obstruction Detection Beams be installed. This can be purchased from the garage door manufacturer.
- The Ratgdo custom page includes the motion sensor and obstruction sections. If these are not available on your product configuration then please delete the motion sensor or irbeam sections of the custom page from your project.

What is the remote control lock?

This feature allows you to disable the RF remote control from controlling the garage door. This is useful if the car is parked outdoors or if it is loaned out to someone whom the homeowner does not want to give access to the garage to.

Help i cannot use my garage door RF remote anymore.

You have locked the remote control. Unlock it via the driver or via the Ratgdo web server.

How do i install Ratgdo hardware?

Please see link below instructions. Take note that you need to pre-install the ESPHome firmware as per instructions below.

- [Ratgdo ESPHome firmware](#)
- [Ratgdo Wiring Instructions](#)

How does the driver talk to Ratgdo?

The driver will communicate to Ratgdo via IP. Please ensure that the Ratgdo is put on a static or reserved ip address.

Do i need to install reed switches for garage door position feedback?

Ratgdo provides full two way feedback on the motor position. As such we know at any time if it is fully open, partially open or fully closed. As such no reed switches are required.

Where can i purchase Ratgdo?

This driver is designed to work with ratgdo with the ESPHome firmware installed. You can order the hardware from the following website

- [Ratgdo website](#)
- [Ratgdo ESPHome firmware](#)