

JVC



JVC FRONT PROJECTOR INTEGRATION GUIDE

MODULE DEVELOPED BY INTEGRITY SOFTWARES



TOTAL CONTROL

JVC FRONT PROJECTOR INTEGRATION GUIDE

Integrity Softworks' JVC Front Projector module provides **two-way control of connected JVC projectors**.

JVC Front Projector Module Features:

- Implements the **full JVC IP** command set
- **Events** based on **projector status queries**
- **Easily extensible** to forthcoming IP commands

Supported Models:

This module works with all **JVC DLA-RS "Reference Series"** and **DLA-X** or **DLA-Z "Precision"** front projectors equipped with a network interface. Note that while JVC commercial projectors will most likely work with this module, functionality has not been tested.

The JVC Front Projector module is only supported on URC products running **Total Control 2.0 and later**. This module is not natively supported on any legacy Total Control 1.0 software or devices.

Getting Started:

Ensure that the projector is properly connected to the network and has a static IP address. The address can be assigned in the projector interface or via DHCP reservation

JVC



TOTAL CONTROL

JVC FRONT PROJECTOR INTEGRATION GUIDE

Downloading & Importing the Module:

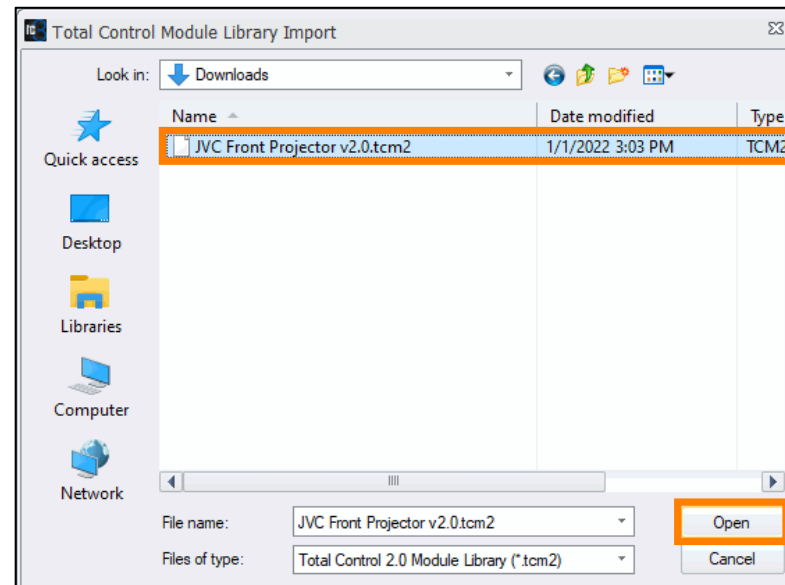
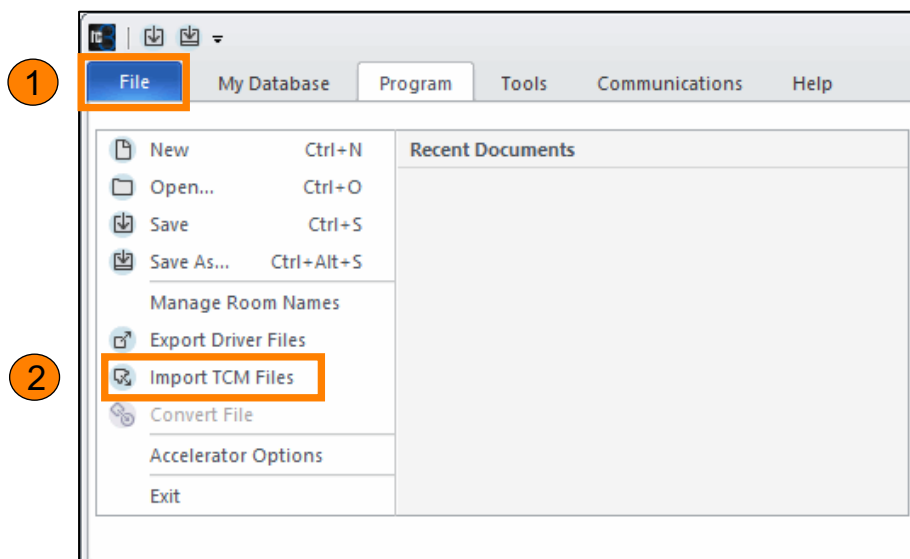
Download the JVC Front Projector two-way module from Driver Central:

<https://DriverCentral.io/JVC Front Projector>

Once the module has been downloaded, perform the following in Accelerator:

1. Select the **File** tab.
2. Select **Import TCM Files**.

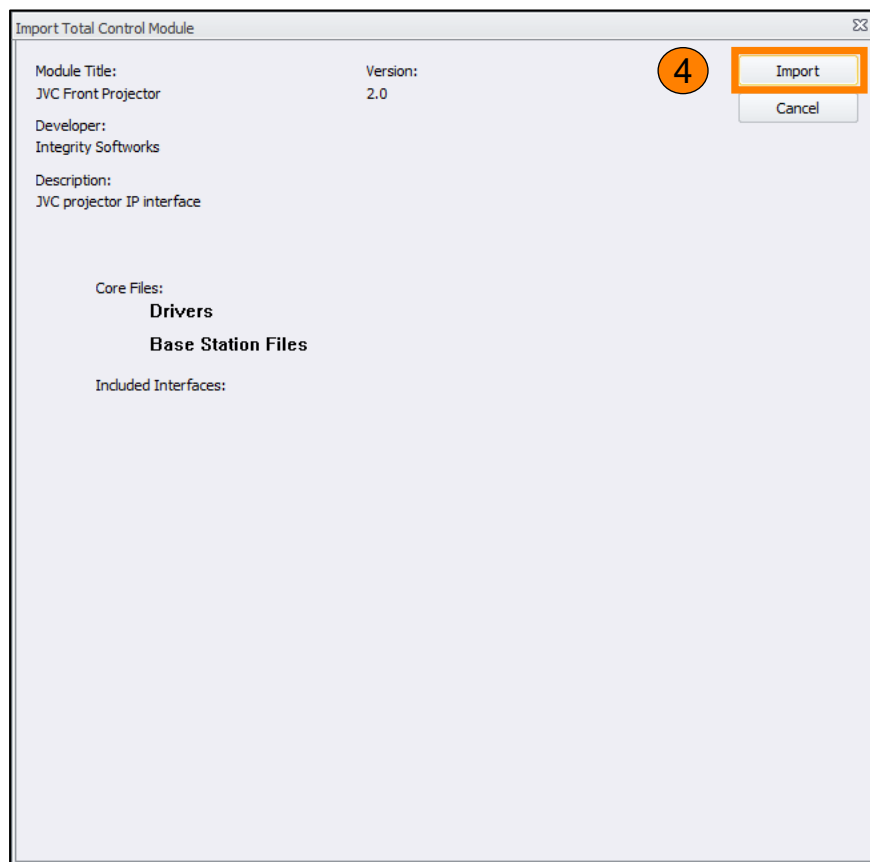
3. **Locate the module**, usually found in the Downloads folder, and **select Open**.



TOTAL CONTROL

JVC FRONT PROJECTOR INTEGRATION GUIDE

4. Select **Import**.



5. Save the current file if necessary and **restart Accelerator**.

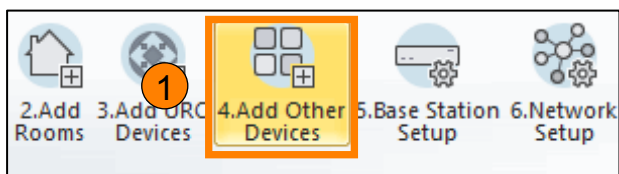
TOTAL CONTROL

JVC FRONT PROJECTOR INTEGRATION GUIDE

Adding the Module:

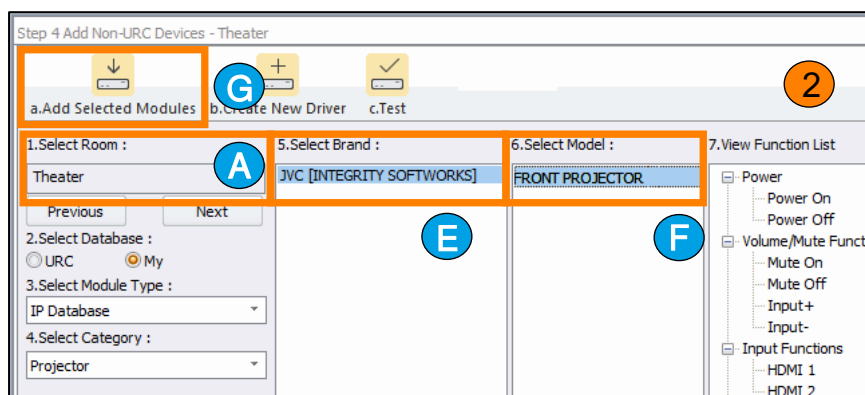
The JVC Front Projector module can be added to any new or existing system.

1. Select **Step 4: Add Other Devices**

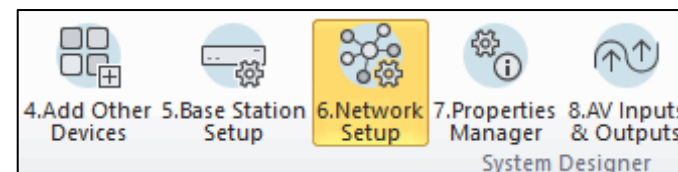


2. Make the following selections:

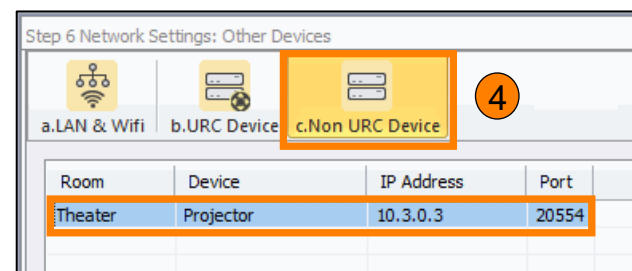
- Select Room:** Choose the room in which to place the module.
- Select Database:** My
- Select Module Type:** IP Database
- Select Category:** Projector
- Select Brand:** INTEGRITY SOFTWARES
- Select Model:** FRONT PROJECTOR
- Select **Add Selected Modules**.



3. Select **Step 6: Network Setup**.

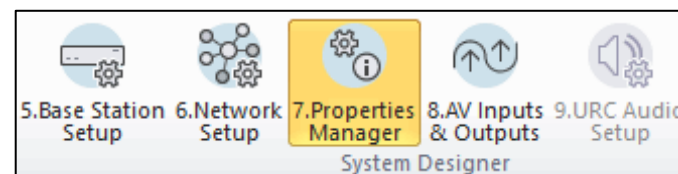


4. Select **Non URC Device** and enter the **IP address for the projector**.



5. Select

Step 7: Properties Manager

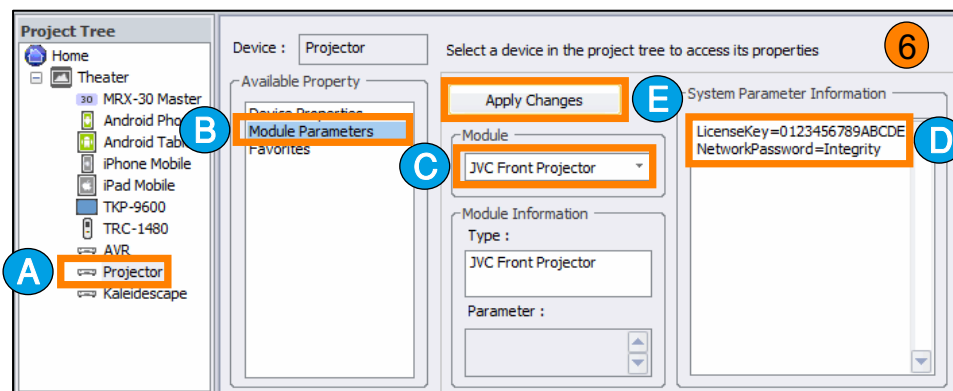


TOTAL CONTROL

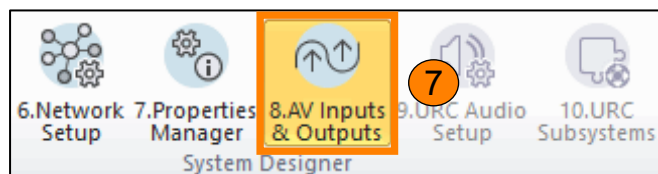
JVC FRONT PROJECTOR INTEGRATION GUIDE

6. Make the following selections:

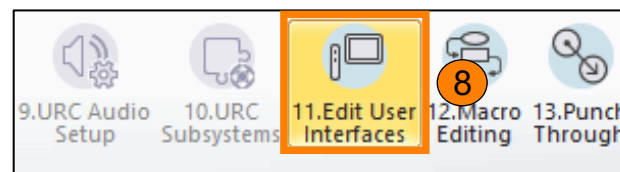
- Project Tree:** Select Projector
- Available Property:** Module Parameters
- Module:** JVC Front Projector
- System Parameter Information:** Enter the license received from Driver Central. If you have a 2021 or later model, you must also set a network password in the projector, and enter the password here. If your projector does not have the option to set a password, leave the *NetworkPassword* parameter blank.
- Click **Apply Changes**



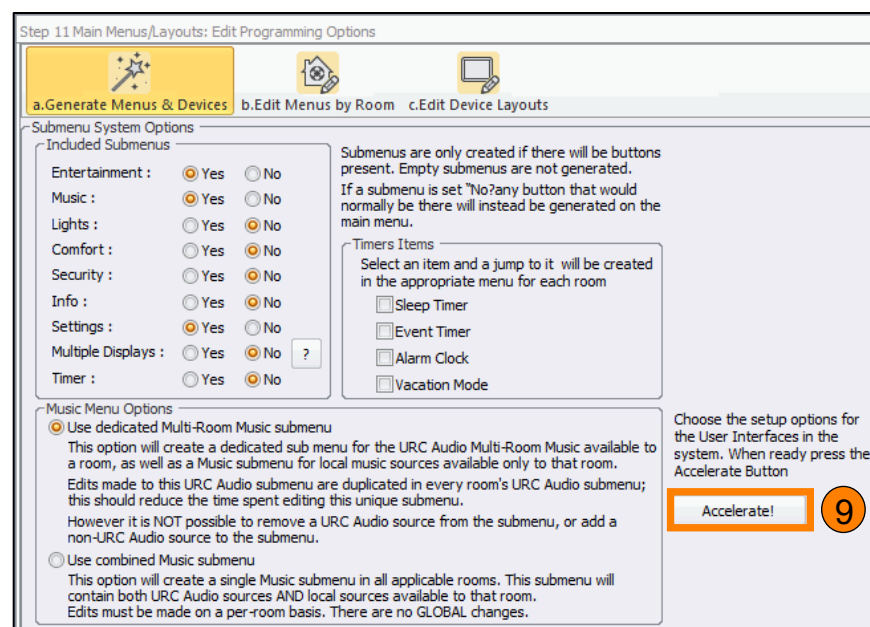
7. Select **Step 8: AV Inputs & Outputs** and assign them appropriately.



8. Select **Step 11: Edit User Interfaces**.



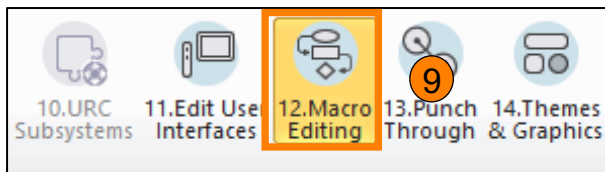
9. Select **Accelerate!**



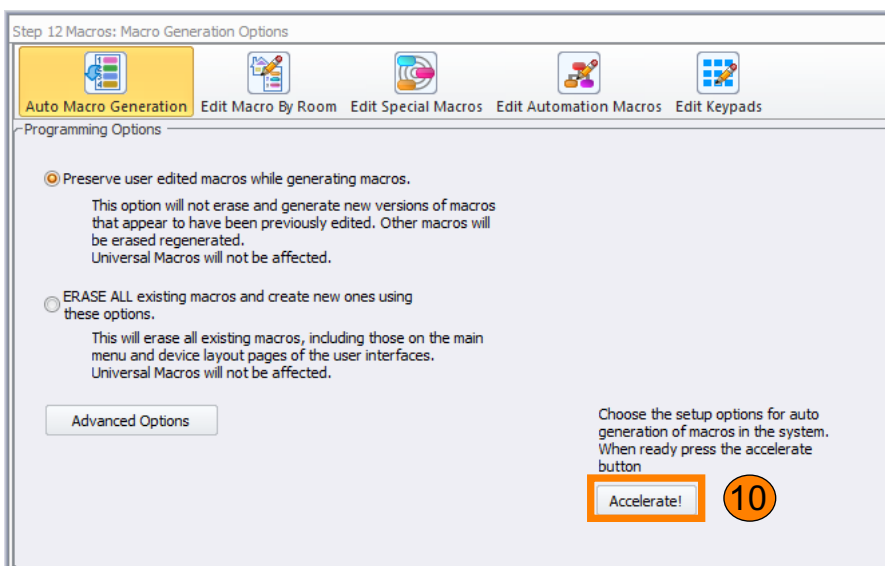
TOTAL CONTROL

JVC FRONT PROJECTOR INTEGRATION GUIDE

10. Select **Step 12: Macro Editing**.



11. Select **Accelerate!**



12. **Download** the configuration to the system.