

HDANYWHERE-uControl-Zone-Processor Installation and Usage Guide



Version: 20230824
Date: Thursday, August 24, 2023
Authors: Kevin Lam

chowmainsoft

Contents

Overview.....	4
Features.....	5
Change Log.....	6
Version 20230824 - 24-AUG-2023.....	6
Setup.....	7
Before you start, make sure that:.....	7
Add and connect the Chowmain uControl Zone Processor drivers into the Control4 system.....	7
Enable Auto Discovery - True.....	7
Enable Auto Discovery - False.....	8
Zone Processor (ZP5).....	8
Configure Delay Properties.....	8
Make AV Bindings.....	8
HDMI CEC.....	9
Configure CEC Command Properties.....	9
CEC Command Examples.....	9
Test CEC Commands.....	11
Programmatically Execute CEC Command.....	12
FAQ.....	13
What are the Requirements for this driver?.....	13
Why is this product so exciting?.....	13
Where can I find CEC commands?.....	13
What hardware will this driver work on?.....	13
Do you offer any other cool drivers?.....	13
I want to try this driver out before buying it?.....	13
Licensing.....	14
Creating a Project on Driver Central.....	14
Purchasing a Driver Licence.....	15
Install the driverCentral cloud driver.....	16
Install Chowmain driver.....	17
Developer Information.....	18
Support.....	19

Ticket / Live Chat Support.....	19
Phone Support.....	19
Driver Documentation.....	19

Overview

The HDAnywhere uControl Zone Processor (ZP5) and uControl Zone Processor Mini (ZP1) provides all the benefits of the uControl service without requiring MHUB. Designed to work stand alone or as part of an expansion to any MHUB system, or other brands, the ZP5 and ZP1 brings a rich array of control options in to the hands of the integrator offering a simple and elegant AV control option to old and new installs.

With hardwire or Wifi connection options, these units are handy to have when you need extra IR or Serial output control ports. The ZP5 features a HDMI CEC control port which makes integrating any TV or Projector a possibility. This could also be used to send any CEC command to any CEC enabled device that it is connected to.

Find out more here:

- [ZP5](#)
- [ZP1](#)

Features

- Auto Discovery
- Self healing. (With Auto Discovery, IP Address changes are detected by the driver)
- IR expansion (Bind any IR drivers for control)
- Serial expansion (Bind any RS232 drivers for control) **Note** One way RS232. Recommended to only use this for Driver Wizard RS232 drivers.
- Default HDAnywhere predefined uControl CEC Library (ZP5 Only)
- Custom CEC commands via Properties or programming (ZP5 only)

Change Log

Version 20230824 - 24-AUG-2023

- Initial release



Setup

Before you start, make sure that:

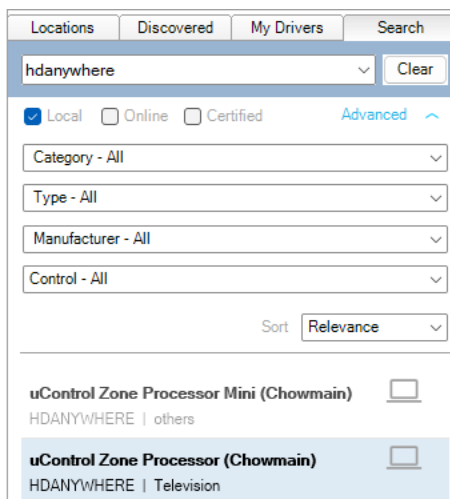
- You have access to Composer Pro and your Control4 system. Composer Express is not supported.
- Your Control4 system is on OS 3.3.2+. Earlier Control4 OS Versions are not officially supported.

Add and connect the Chowmain uControl Zone Processor drivers into the Control4 system.

1. Select Driver > "Add or Update Driver or Agent" from the toolbar in the top left of Composer Pro and the Chowmain uControl Zone Processor drivers.

Name	Date modified	Type
 chowmain_uControl_zone_processor.c4z	17/08/2023 11:28 am	C4Z File
 chowmain_uControl_zone_processor_mini.c4z	17/08/2023 11:28 am	C4Z File

2. Add the appropriate driver for the Zone Processor you are setting up.



The screenshot shows the HDAnywhere search interface. At the top, there are tabs for 'Locations', 'Discovered', 'My Drivers', and 'Search'. Below the tabs is a search bar with 'hdanywhere' entered and a 'Clear' button. Under the search bar, there are checkboxes for 'Local' (checked), 'Online', and 'Certified', along with an 'Advanced' link and an upward arrow. Below these are several dropdown menus for filtering: 'Category - All', 'Type - All', 'Manufacturer - All', and 'Control - All'. There is also a 'Sort' dropdown set to 'Relevance'. The search results section shows two items: 'uControl Zone Processor Mini (Chowmain)' with a laptop icon and 'HDANYWHERE | others' below it, and 'uControl Zone Processor (Chowmain)' with a laptop icon and 'HDANYWHERE | Television' below it. The second item is highlighted with a blue background.

3. Connect to Device.

Enable Auto Discovery - True

- If you have multiple Zone Processors on the network, a Device MAC Address property will appear and you will need to enter the device's MAC Address for discovery to work. You can find the MAC Address from the HDAnywhere cloud [website](#) if you've added the device to a HDAnywhere cloud account.

Device MAC Address

38:b1:9e:20:14:12

Enter Device MAC Address if there are more than one ZP5's to discover

- Upon discovery, you should see the IP Address property populate and the Connection Status show "Online"

Connection Status	Online
Enable Auto Discovery	True
IP Address	10.1.100.61

Enable Auto Discovery - False

- Enter the Zone Processor's IP Address in the property. Upon connection, you should see the Connection Status show "Online".

Note We recommend a static IP Address or DHCP reservation setup for the Zone Processor on the network.

4. Refresh Navigators.

Zone Processor (ZP5)

Configure Delay Properties

- Command Delay - the Command Delay Milliseconds value is simply the time elapsed between each command that is sent to the TV.
- Power On Delay - used to establish the amount of time that will elapse during the power-on sequence before the driver continues to issue commands.
- Power Off Delay - used to establish the amount of time that will elapse during the power-off sequence before the driver continues to issue commands.
- Volume Ramp Delay - the Volume Ramp Delay Milliseconds value is simply the time elapsed between each volume command that is sent to the TV.

Command Delay Milliseconds	250
Power On Delay Seconds	5
Power Off Delay Seconds	8
Volume Ramp Delay Milliseconds	250

Make AV Bindings

- Make appropriate input and end-point bindings to suit your installation.
- Refresh Navigators

HDAnywhere ZP5				
Name	Type	Connection	Input/Output	Connected To
Audio/Video Inputs				
HDMI 1	Video	HDMI	Input	Nvidia Shield->Output Main
HDMI 2	Video	HDMI	Input	
HDMI 3	Video	HDMI	Input	
AV 1	Video	COMPOSITE	Input	
AV 1	Video	COMPONENT	Input	
AV 1	Audio	STEREO	Input	
AV 2	Video	COMPOSITE	Input	
AV 2	Video	COMPONENT	Input	
AV 2	Audio	STEREO	Input	
DTV	Video	RF_UHF_VHF	Input	
Control Outputs				
IR Out 1	Control	IR_OUT	Output	
IR Out 2	Control	IR_OUT	Output	
IR Out 3	Control	IR_OUT	Output	
IR Out 4	Control	IR_OUT	Output	
IR Out 5	Control	IR_OUT	Output	
RS232	Control	RS_232	Output	
Room Control				
Room Selection - Output	RoomControl	AUDIO_SELECTION	Output	Test Lab->Audio End-Point 1, Test Lab->Video's Audi...
Room Selection - Output	RoomControl	AUDIO_VOLUME	Output	Test Lab->Video Volume 1, Test Lab->Audio Volume 1
Room Selection - Output	RoomControl	VIDEO_SELECTION	Output	Test Lab->Video End-Point

HDMI CEC

If you are using the ZP5 CEC control port, you need to ensure:

- HDMI CEC is enabled on the device you are trying to control.
- you have some basic knowledge of how CEC works.
- you understand that **CEC is not standardised across all manufacturers**. Whilst the protocol is implemented in a standard way, implementation, naming and command support are not.

Configure CEC Command Properties

- For every command that is needed in the integration of the Television, configure the Properties.
- The driver comes with the "Default" HDAnywhere predefined uControl CEC Library for any available commands. If these do not work, Change the "Command Type" property to "Custom" and enter the CEC command.

CEC Command Examples

- Examples shown below on how to enter commands found on the [CEC-O-MATIC](#) website.

Ads by kwikwai

kwikwai

Tired of analyzing your frames manually ? Kwikwai will do it for you. Get yours !
www.kwikwai.com

Home news

News from the expanding universe of digital home
blog.kwikwai.com

INCYMA

Want to know more about this amazing company with such an innovative product ?
www.incy.ma.com



my obscure HDMI-CEC frame



EF:82:10:00



Need inspiration ? Try [this](#)

my crystal clear HDMI-CEC message

source

destination

TV	Recording 1	Recording 2	Tuner 1
Playback 1	Audio system	Tuner 2	Tuner 3
Playback 2	Playback 3	Tuner 4	Playback 3
Reserved (C)	Reserved (D)	Reserved (E)	Unregistered

TV	Recording 1	Recording 2	Tuner 1
Playback 1	Audio system	Tuner 2	Tuner 3
Playback 2	Playback 3	Tuner 4	Playback 3
Reserved (C)	Reserved (D)	Reserved (E)	Broadcast

End-user features

Supporting features

General protocol

All messages

classified according to the HDMI specification

▼ One Touch Play

Allows a device to be played and become the active source with a single button press.

Active Source

Image View On

Text View On

message ID : 82 - Used by a new source to indicate that it has started to transmit a stream OR used in response to a "Request Active Source" (Broadcast). This message is used in several features : One Touch Play, Routing Control

parameters

Physical Address

1.0.0.0

HDMI-1 Command Type

Custom

HDMI-1 Custom Logical Address

EF

HDMI-1 Custom Command

82

HDMI-1 Custom Arguments

10 00



my obscure HDMI-CEC frame

Need inspiration ? Try [this](#)

my crystal clear HDMI-CEC message

source				destination			
TV	Recording 1	Recording 2	Tuner 1	TV	Recording 1	Recording 2	Tuner 1
Playback 1	Audio system	Tuner 2	Tuner 3	Playback 1	Audio system	Tuner 2	Tuner 3
Playback 2	Playback 3	Tuner 4	Playback 3	Playback 2	Playback 3	Tuner 4	Playback 3
Reserved (C)	Reserved (D)	Reserved (E)	Unregistered	Reserved (C)	Reserved (D)	Reserved (E)	Broadcast

End-user features Supporting features General protocol All messages classified according to the HDMI specification

One Touch Play
One Touch Record
Deck Control
Tuner Control
System Audio Control
Device Menu Control

Remote Control Pass Through

Enables remote control commands to be passed through to other devices within the system.

User Control Pressed User Control Released

message ID : 44 - Used to indicate that the user pressed a remote control button or switched from one remote control button to another (Directly addressed). This message is used in several features : Device Menu Control, System Audio Control, Remote Control Pass Through

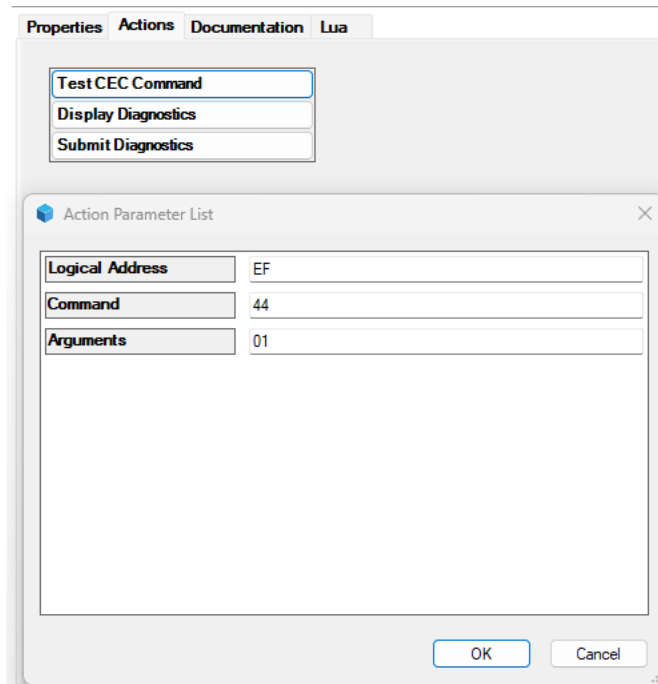
parameters

UI Command Up

Up Command Type	Custom
Up Custom Logical Address	4F
Up Custom Command	44
Up Custom Arguments	01

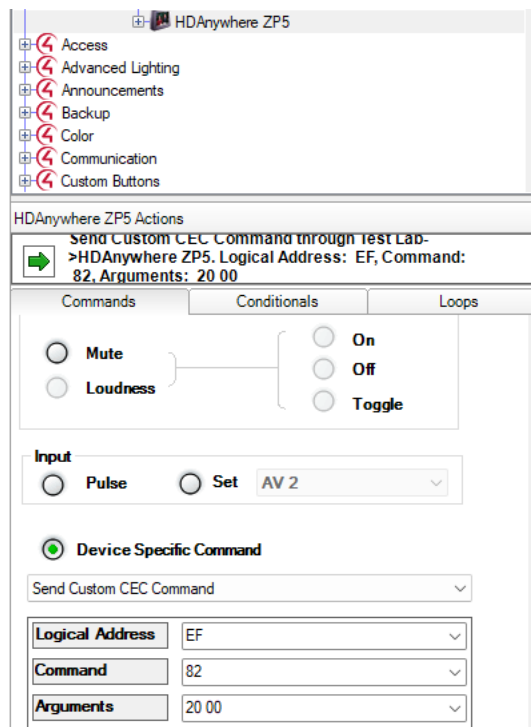
Test CEC Commands

- In the driver Actions, you can send test CEC commands to verify the commands work.



Programmatically Execute CEC Command

- If you wish to send CEC commands via programming, you can do so via the driver's device specific command



FAQ

What are the Requirements for this driver?

- Control4 OS 3.3.2+

Why is this product so exciting?

- HDMI CEC control port on the ZP5 makes it possible to integrate any TV or projector on the market with CEC.
- Programmatically fire CEC commands to any CEC enabled devices.
- IR and RS232 expansion (One-way)

Where can I find CEC commands?

- Use the [CEC-O-MATIC](#) website to build commands. Refer to the driver installation guide to find out how to use these commands on the driver.

What hardware will this driver work on?

- The HDAnywhere uControl Zone Processor [ZP5](#) and uControl Zone Processor Mini [ZP1](#)

Do you offer any other cool drivers?

- Control4 is a major part of our business. We develop new drivers all the time. You can see all of our drivers on our website (<https://chowmain.software>). Sign up to our newsletter to get notified when new drivers are released.

I want to try this driver out before buying it?

- All Chowmain drivers for Control4 come with a 90 day trial.

Licensing

- How does the trial period work?

All Chowmain drivers are free to use for a set trial period. When the trial expires the driver will cease to function until you purchase a licence and apply it to the driverCentral project.

- Where do I buy a Licence from?

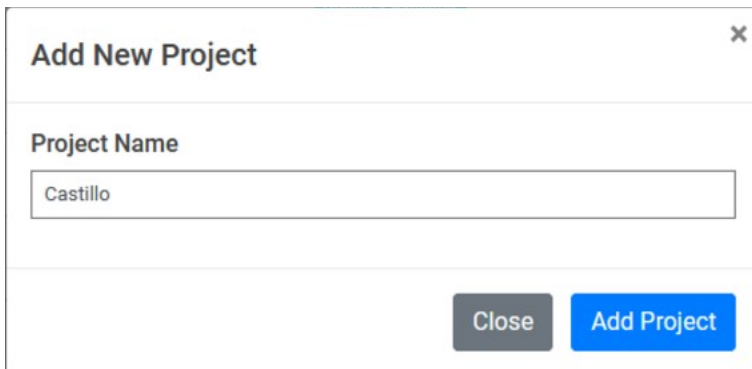
This driver is developed by Chowmain software & Apps and is distributed by driverCentral, Inc
<https://www.drivercentral.io/chowmain-ltd>

To purchase a driver:


1. On driverCentral, purchase a license and register it to your project
2. If the driver is not already installed in your project, download it and install it
3. If necessary, use the cloud driver's Action: "Check Drivers" to force the licence to download into the project

Creating a Project on Driver Central

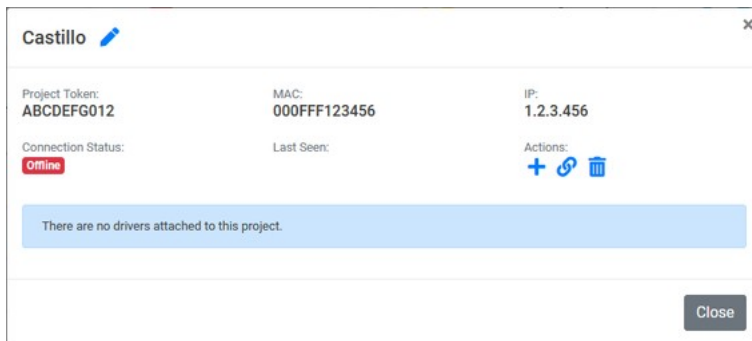
1. Visit <http://www.drivercentral.io>
2. Log into your driver Central dealer account
3. Click **Portal**
4. Click **New Project**
5. Enter the project name



6. Click **Add Project**
7. Click on the project we just created

Project	Status	Created
 Castillo	Unassigned Project	1999-12-31 23:59:56

- Take note of the **Project Token** as this will be used later when we install the Cloud Driver



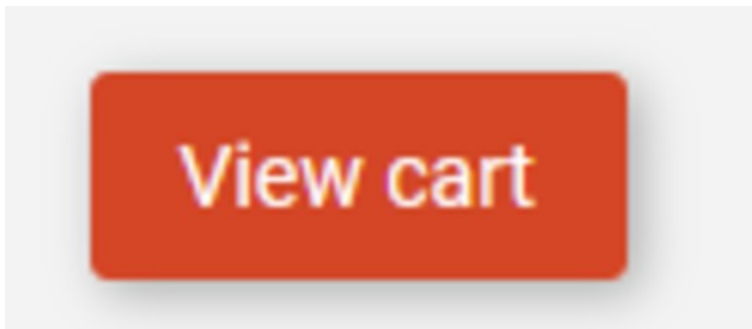
- Click **Close**

Purchasing a Driver Licence

- Visit <https://www.drivercentral.io/chowmain-ltd/> and find the product/driver you want to purchase a licence for
- Click on **Add to Cart**

ADD TO CART

- Now click the shopping cart icon (top right) and click **View cart**



- Confirm that your order is correct and click on **Proceed to checkout**

Proceed to checkout

- Choose your payment option, provide the relevant details and click **Place order**

Checkout

Paypal
Paypal, or Credit Card...

Credit Card
Visa, Mastercard, etc...

☐ Select this check box to accept the [Terms and Conditions](#)

☐ Subscribe to our newsletter

Place order (\$190.00)

6. You will now be at a page where you can see your purchased licence

License Name	License Key	Project Assigned	Action
[Redacted License Information]			Assign to Project

7. From here assign the licence to the project we created or if you did not follow that step create a new project

License Assignment for
221

Assign License to Existing Project

Select Existing Project:

New Project (enter project name below)

Or...

Create a new project

Enter New Project Name

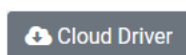
Enter email for Installer Notifi

Are you sure you want to do this?

Assign License to Project?

Install the driverCentral cloud driver

1. Visit <http://www.drivercentral.io>
2. Log into your driver Central dealer account
3. Click **Portal**
4. Click **Cloud Driver**



5. Copy the C4Z driver to My Documents\Control4\Drivers directory
6. Add the driver to your project
7. Click on the driver to view it's properties

Cloud Status	Please enter cloud project token below...
Project Information	(1) Total, (0) Licensed, (0) Trials, (1) Expired, (0) Updates.
Driver Version	1001
Project Token	<input type="text"/>
	Project token from driverCentral.io project portal
Driver Actions	<input type="button" value="v"/>
Debug Mode	Off <input type="button" value="v"/>

8. Type in the project token we took note of earlier
9. Click **Actions** tab
10. Click **Check Drivers**

Install Chowmain driver

1. Install the Chowmain driver
2. You will notice that the Activation Status reflects a Licence Activated state
3. Any driver that does not have a purchased licence will have a trial licence activated via the marketplace
Note that there is no way to reactivate the trial so please use wisely
4. If you do not then press the Check Drivers action in the driverCentral Cloud driver again

Activation Status	Update Available!!! License Activated
Driver Version	1002
Driver Information	Navigate to connections tab and make serial binding
Automatic Updates	Off <input type="button" value="v"/>

Developer Information



Copyright © 2023 Chowmain Ltd. <http://www.chowmainsoft.com>

All information contained herein is, and remains the property of Chowmain Ltd and its suppliers, if any. The intellectual and technical concepts contained herein are proprietary to Chowmain Ltd and its suppliers and may be covered by U.S. and Foreign Patents, patents in process, and are protected by trade secret or copyright law. Dissemination of this information or reproduction of this material is strictly forbidden unless prior written permission is obtained from Chowmain Ltd.

Information stated in this document is current as of July 2020 and may change. For latest information please visit <http://www.chowmainsoft.com>

Support

Ticket / Live Chat Support

We provide ticket based support and live chat support for those who can't contact us via phone. Click the button below to visit our online helpdesk.

Support Centre	Hours of Operation	URL
American Support Desk	8:30AM – 4:30PM Mountain Time	https://help.drivercentral.io/

Phone Support

Support Center	Hours of Operation	Phone Number
Australian Support Desk	6:30AM – 5:30PM Australian Eastern Time	+61 3 9028 6999

Driver Documentation

All of our drivers come with detailed instructions on how to install and configure the driver for use in different projects. Please refer to the documentation included with the driver you downloaded, or [contact us](#) if you are unable to locate the documentation for your driver.