

TP-Link Power Controller Installation and Usage Guide



Version: 1.0.0
Date: Wednesday, July 26, 2023
Authors: Richard Woodburn



Contents

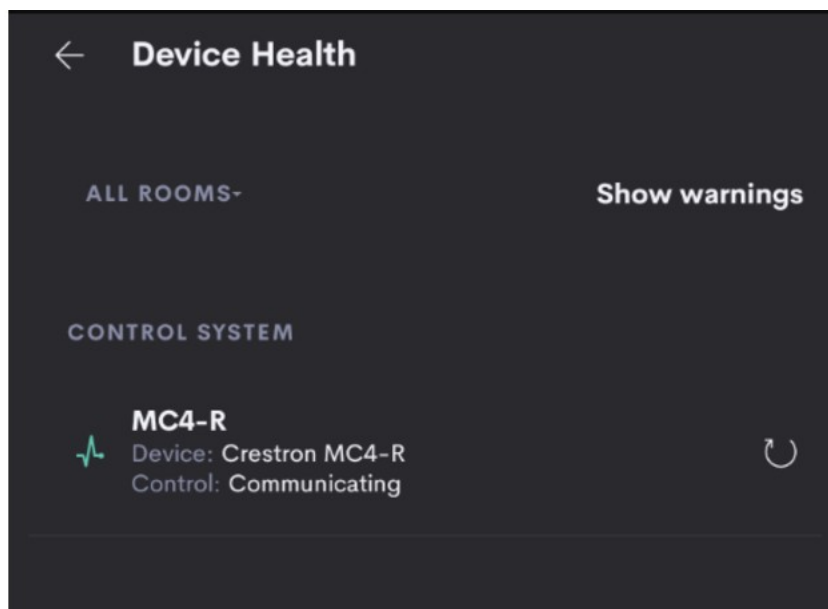
Overview.....	3
Features.....	4
Supported Series.....	4
SupportedModels.....	4
Installation.....	6
Standard Installation.....	6
Usage.....	7
Device Settings.....	7
Power Banks.....	7
Assigned Devices.....	8
Power.....	8
Control.....	9
Sequences.....	10
Offline.....	11

Overview

Chowmain has integrated the range of TP-Link Wifi based Smart Home products into Crestron Home with two way control and feedback. This provides easy to retrofit solutions for outlet control, in-wall switch control. The hardware is extremely affordable and widely available. It definitely adds value to any Crestron Home installation.

Features

- The driver is a Power Controller type allowing for first class integration with Crestron Home
- On / Off / Power Cycle controls for each outlet
- Available as a sequence
- Health Dashboard support



Supported Series

- Kasa only

Supported Models

- EP10
- EP25
- EP40
- EP40A
- HS100
- HS103
- HS105
- HS107
- HS110
- HS300
- KP105
- KP115
- KP125
- KP200
- KP303
- KP400

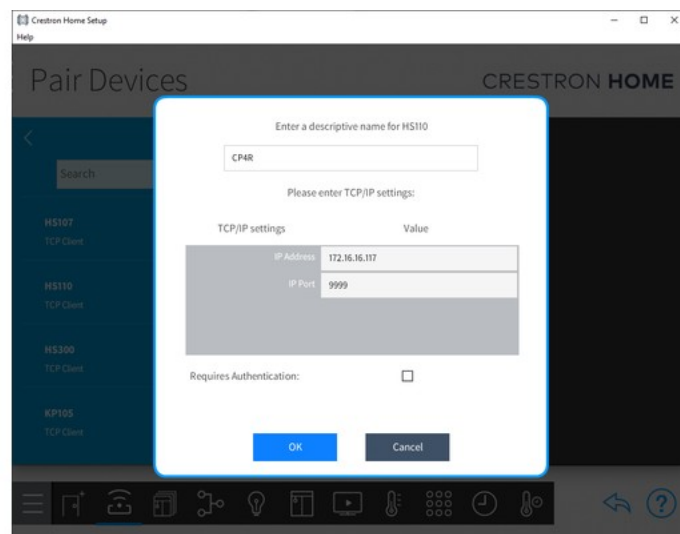
- KP401

Installation

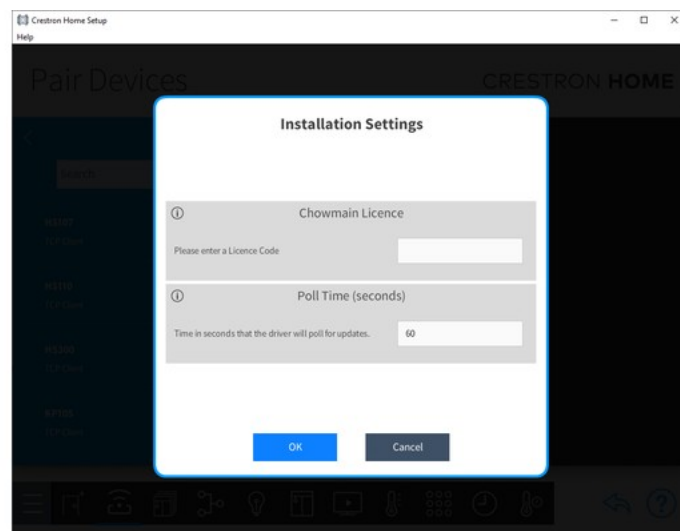
Standard Installation

The TP-Link Crestron Home module is available for installation directly from the Drivers menu in the Pair Devices step in the Crestron Setup App. To find the driver you need to go into

1. Pair Devices
2. Drivers
3. Power Controller
4. TP-Link
5. Click the + button to select your model
6. Enter the device details



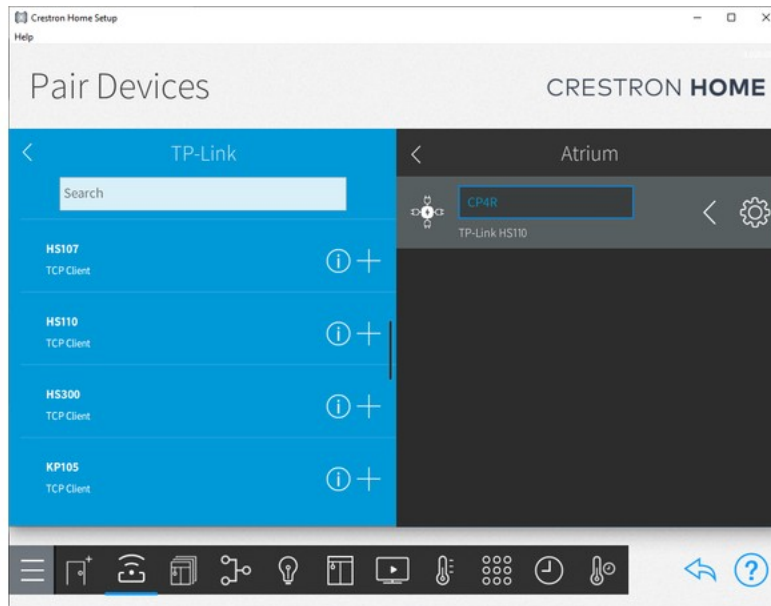
7. Enter your Chowmain Password
8. Poll Time defaults to 60 seconds, set to 0 to disable polling.



Usage

Device Settings

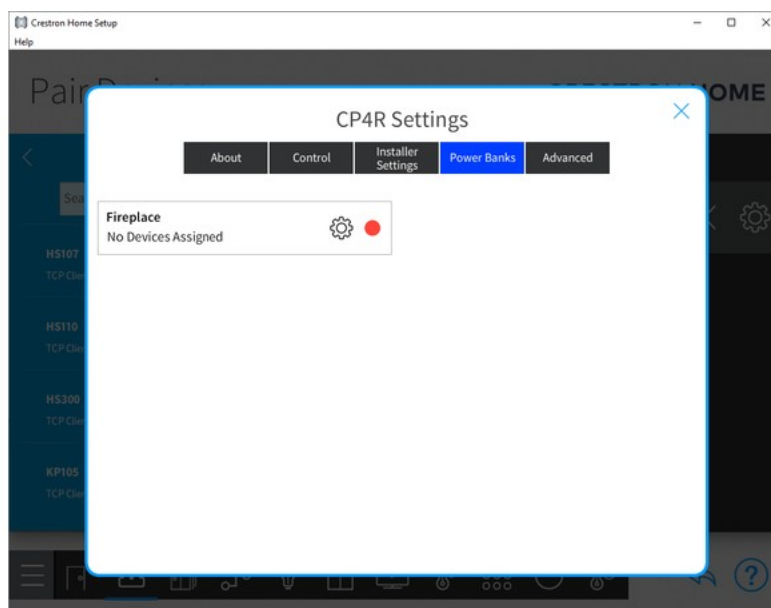
On the Pair Devices screen click on the cog of the added TP-Link device.



On the settings page of the device there will be a number of tab menus at the top.

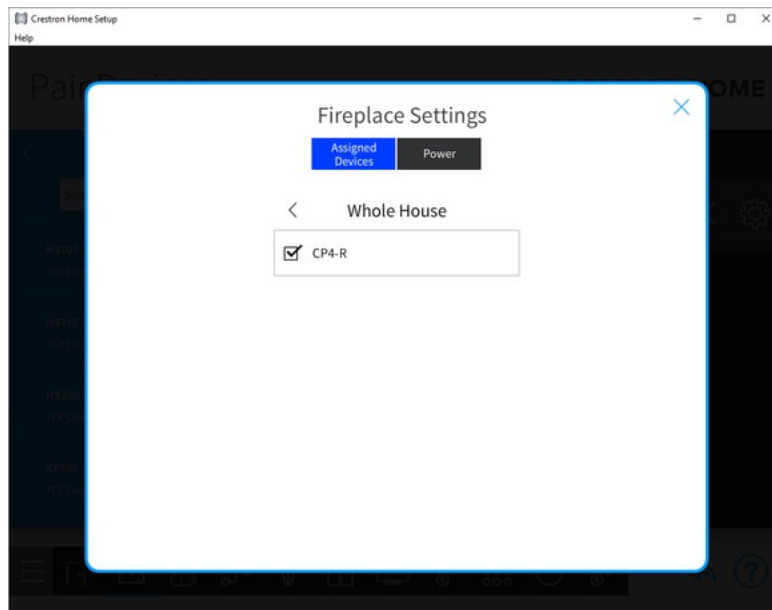
Power Banks

If the device has been found this page will display a tile for each outlet supported by the device. Click on the cog of the outlet to configure



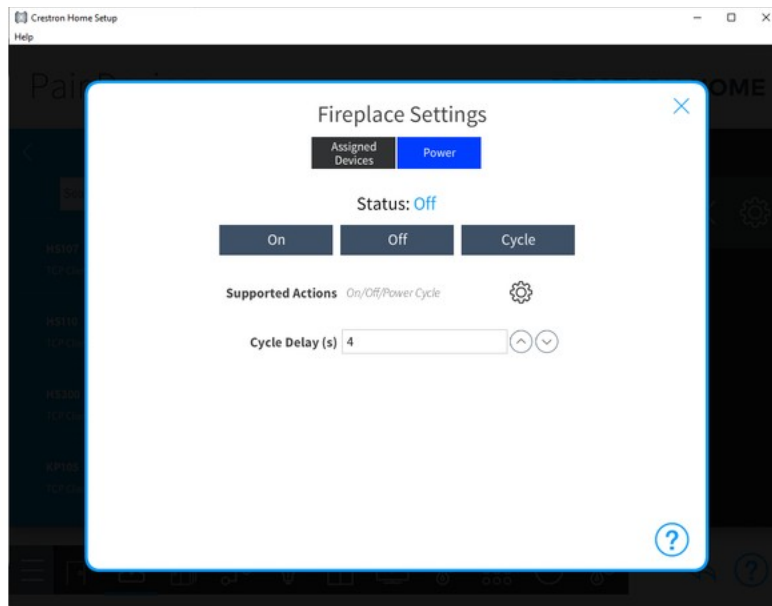
Assigned Devices

This is where you can assign a device that is already known to the Crestron Home processor to the outlet.



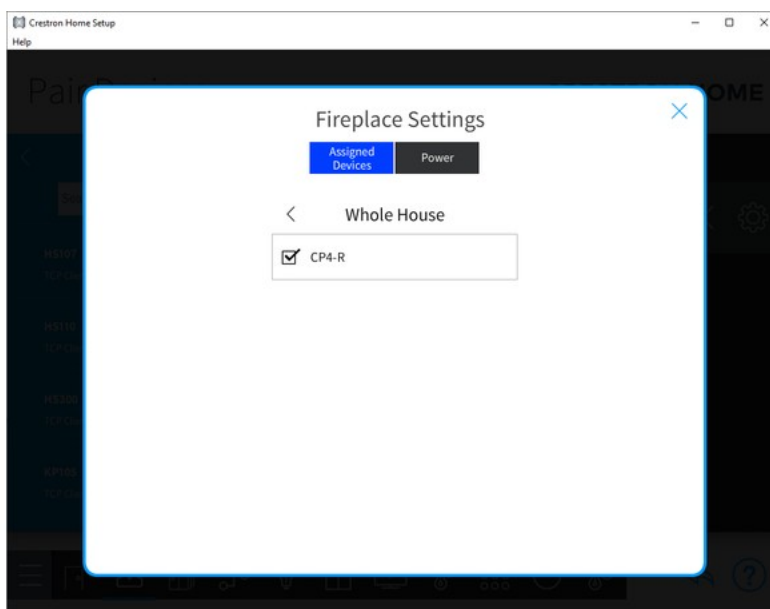
Power

This is where you can test the on, off and power cycle actions of the device as well as configure any cycle delay required.

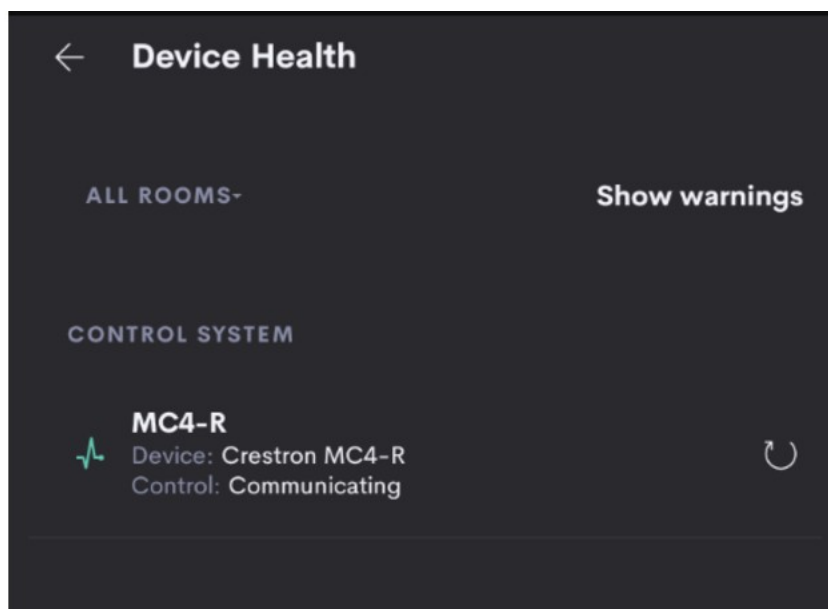


Control

To control outlets on the TP-Link Powerboard you must assign a device that is plugged into the outlet. This is done by clicking on the cog in the Power Banks menu then navigating to a room or whole house and selecting a device. Note that a device can only be assigned to one total power outlet across the whole Crestron Home system. On the other hand it is possible to assign multiple devices to one outlet.

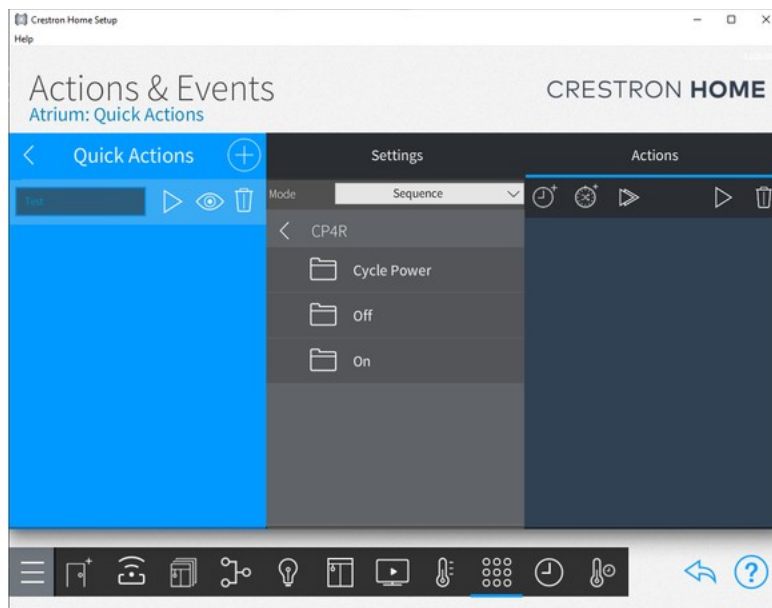


This device will appear in the Device Health Dashboard with a button to power cycle the device.



Sequences

On, Off and Power Cycle functions of the TP-Link Powerboard are available to use in sequences.



Offline

If the driver loses connection to the TP-Link device it will show as being offline. The driver will attempt to reconnect and if successful will automatically change back to being online.

