

# Advantage Air Installation and Usage Guide



**Version:** 1.8  
**Date:** Friday, February 23, 2024  
**Authors:** Richard Mullins



# Contents

<b>Overview.....</b>	<b>5</b>
<b>Features.....</b>	<b>6</b>
<b>Installation.....</b>	<b>7</b>
Add the driver.....	7
<b>Configuration.....</b>	<b>8</b>
Driver Settings.....	8
IP [string].....	8
Port [number].....	8
A/C Number [number].....	8
Poll Time (in seconds) [number].....	9
Licence [string].....	9
HVAC Modes.....	9
Heat [boolean].....	9
Cool [boolean].....	9
Vent [boolean].....	9
Dry [boolean].....	9
Fan Modes.....	9
Low [boolean].....	9
Medium [boolean].....	9
High [boolean].....	10
Auto [boolean].....	10
Setpoint.....	10
Setpoint Maximum [number].....	10
Setpoint Minimum [number].....	10
Zones.....	10
Zone 1-12 Temperature Support [boolean].....	10
<b>Driver Commands.....</b>	<b>11</b>
Air Conditioning Functions.....	11
Power On [TAG: ].....	11
Power Off [TAG: ].....	11
Set Heat Mode [TAG: Stat Heat].....	11

Set Cool Mode [TAG: Stat Cool].....	11
Set Vent Mode [TAG: Stat Vent].....	11
Set Dry Mode [TAG: Stat Dry].....	11
Change A/C Setpoint.....	11
Setpoint Up.....	11
Setpoint Down.....	12
Set Fan.....	12
Zone Commands.....	12
Power On [TAG: Stat On].....	12
Power Off [TAG: Stat Off].....	12
Change A/C Setpoint.....	12
Setpoint Up [TAG: Stat Setpoint Up].....	12
Setpoint Down [TAG: Stat Setpoint Down].....	12
<b>Driver Variables.....</b>	<b>13</b>
Air Conditioning Variables.....	13
A/C Name [string].....	13
A/C Setpoint [number].....	13
A/C Fan State [string].....	13
Fresh Air State [boolean].....	13
Time To On [number].....	13
Time To Off [number].....	13
Zone 1 - 12 Variables.....	13
Zone Name [string].....	13
Zone Power [boolean].....	14
Zone Setpoint [number].....	14
Airflow Percentage [number].....	14
<b>Driver Events.....</b>	<b>15</b>
System Events.....	15
Zone 1 - 12 Power On [TAG: zoneXPowerOn where X is 1 - 12].....	15
Zone 1 - 12 Power Off [TAG: zoneXPowerOn where X is 1 - 12].....	15
<b>Frequently Asked Questions.....</b>	<b>16</b>
Why is this product exciting?.....	16
What HVAC systems can I use this driver with?.....	16
Where can i purchase Advantage Air?.....	16

Do you offer showroom discounts?..... 16

I want to try this driver out before buying it?..... 16

## Overview

The Advantage Air RTI driver allows for comprehensive control of your MyAir controlled system.

Advantage Air is an Australian based HVAC manufacturer based in Perth, Western Australia that sells HVAC systems in Australia and South Africa. MyAir is Advantage Air's premium reverse cycle air conditioning system with 10 zones and individual room airflow control.

Chowmain's MyAir driver for RTI will work with all models of MyAir by providing two way control and feedback.

The logo for Advantage Air, featuring the words "ADVANTAGE AIR" in a bold, blue, sans-serif font. A registered trademark symbol (®) is located at the top right of the word "AIR". The logo is centered within a light gray rectangular background.

## Features

- Power On / Off the system
- Set Heat / Cool / Vent and Dry modes
- Direct Setpoint control
- Setpoint Up / Down control
- Support for systems with independent zone control
- Setpoint controls automatically allow for independent zone control (if available) or system wide settings without any additional programming.
- Damper control for each zone

# Installation

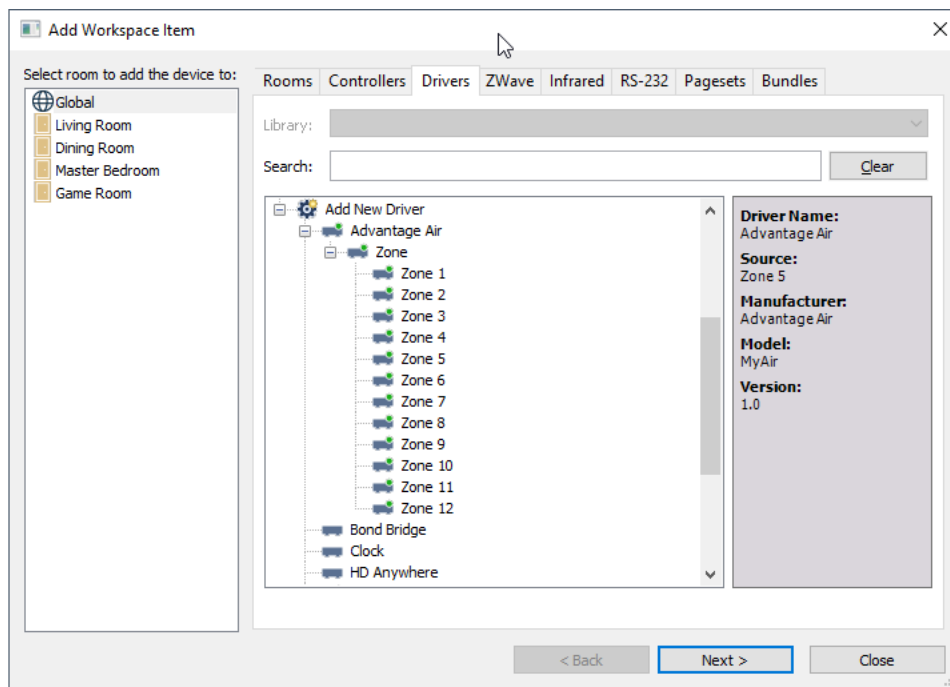
The zip file that included this documentation has the rtidriver file you will need to add. The first step is to download and extract the driver from the zip file. The default location is Documents\Integration Designer\Control Drivers

If you have more than one Android TV or Fire TV device the driver can be added multiple times to your project.

## Add the driver

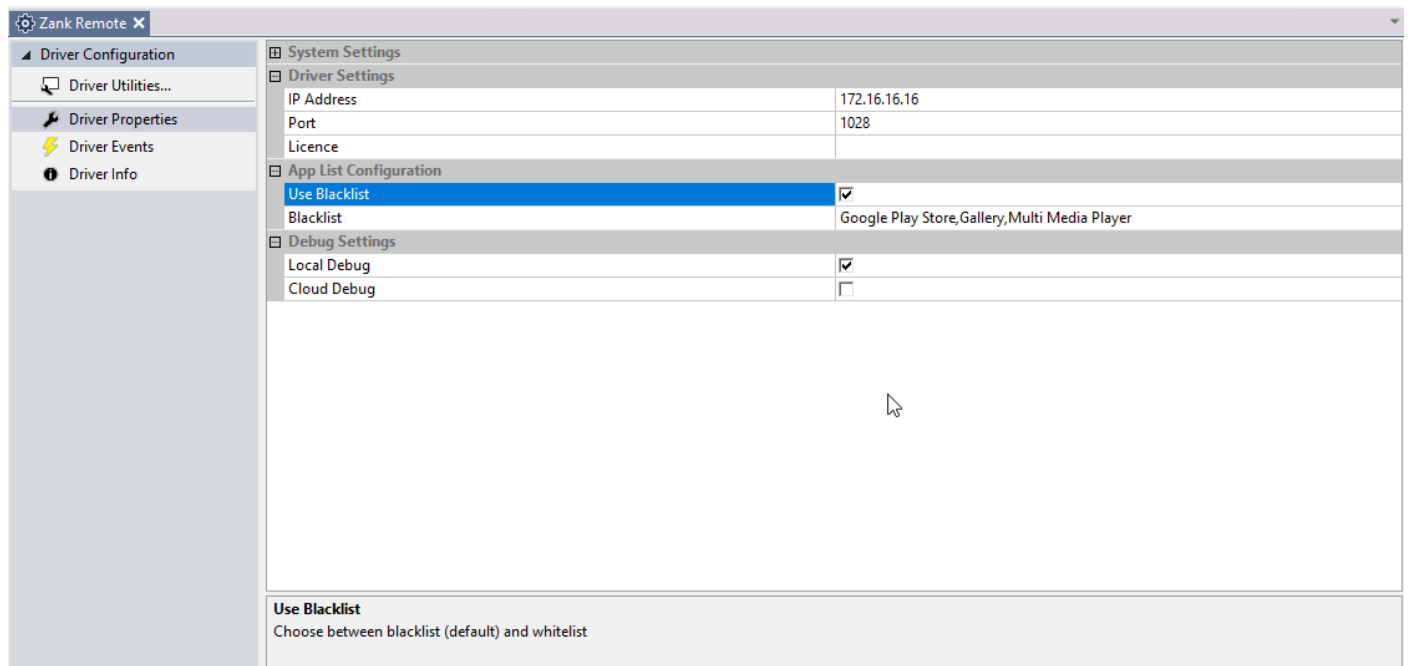
Click on to the Drivers tab at the top of the Add Workspace Item window. The driver supports up to 12 zones so select the appropriate room, select a zone then click Next. If required change the driver name and when your done click Add Device. If you have more than one zone to add repeat the process.

The driver is now ready to configure or use.



# Configuration

The driver only requires a number of items to be configured and needs to get set to match your Advantage Air system.



It is important to set the following settings to match your system otherwise you may end up with unexpected results. The main set of options that you will need to carefully set are the temperature support options. If the zone is configured for temperature support, that is to say it has its own temperature sensor, then you will open up the option to adjust setpoints per zone and take advantage of the MyZone feature. This will also provide per zone setpoint variables. If you don't have per zone temperature sensors then you will want to use the system setpoint functions and variables for each zone (deselecting temperature support will hide the zone specific functions and variables)

## Driver Settings

### IP [string]

The IP address of the MyAir touchscreen you are connecting to

### Port [number]

The port used for communication. The default is 2025.

### A/C Number [number]

The number of installed A/C units in your system, up to a maximum of 4.

### **Poll Time (in seconds) [number]**

The system will poll for an updated state every so often. The duration between polls can be set here in seconds. The default time is 30 seconds, with a minimum of 5 seconds and a maximum of 120s allowed. Please note that the unit can take up to 10 seconds to refresh its own state so setting a value less than 10 seconds may result in incorrect data being retrieved.

### **Licence [string]**

The licence code you obtained from Driver Central. If you have not yet purchased a licence you can do so from...

## **HVAC Modes**

### **Heat [boolean]**

If your HVAC system supports heat mode, please check this config option. This will affect the functions and variables available for each zone.

### **Cool [boolean]**

If your HVAC system supports cool mode, please check this config option. This will affect the functions and variables available for each zone.

### **Vent [boolean]**

If your HVAC system supports vent mode, please check this config option. This will affect the functions and variables available for each zone.

### **Dry [boolean]**

If your HVAC system supports dry mode, please check this config option. This will affect the functions and variables available for each zone.

## **Fan Modes**

### **Low [boolean]**

If your HVAC system supports a low fan speed, please check this config option. This will affect the functions and variables available for each zone.

### **Medium [boolean]**

If your HVAC system supports a medium fan speed, please check this config option. This will affect the functions and variables available for each zone.

## **High [boolean]**

If your HVAC system supports a high fan speed, please check this config option. This will affect the functions and variables available for each zone.

## **Auto [boolean]**

If your HVAC system supports a auto fan speed, please check this config option. This will affect the functions and variables available for each zone.

## **Setpoint**

### **Setpoint Maximum [number]**

This config option is used to set the lowest available setpoint. For most systems this is 16, but please add the appropriate value here.

### **Setpoint Minimum [number]**

This config option is used to set the highest available setpoint. For most systems this is 32, but please add the appropriate value here.

## **Zones**

### **Zone 1-12 Temperature Support [boolean]**

For each attached zone, please indicate whether or not it has an attached temperature sensor. Please note that only zones with temperature sensors can be used for the MyZone function. If you have no temperature sensors the system will use the return air temperature and MyZone will be disabled.

## Driver Commands

The driver command allow for systems that have individual zone control, where the zones have their own temperature sensor, as well as system that have central control (using the return air temperature). The appropriate functions you need will depend on your configuration. Note the setpoint commands for each zone will control the system setpoint if no temperature support is set for that zone.

### Air Conditioning Functions

The Air Conditioning functions affect the entire system. If you want to adjust something specific to a zone, check the zones functions section below.

#### Power On [TAG: ]

This will send the power on command, allowing the HVAC system to be used.

#### Power Off [TAG: ]

This will send the power off command, shutting the HVAC down.

#### Set Heat Mode [TAG: Stat Heat]

This will Set Heat command will change the HVAC units mode to heat.

#### Set Cool Mode [TAG: Stat Cool]

This will Set Cool command will change the HVAC units mode to cool

#### Set Vent Mode [TAG: Stat Vent]

This will Set Vent command will change the HVAC units mode to Vent, if the unit supports this function.

#### Set Dry Mode [TAG: Stat Dry]

This will Set Dry command will change the HVAC units mode to Dry, if the unit supports this function.

### Change A/C Setpoint

The Change setpoint command can be used to set a specific setpoint for the entire system. Depending on your zone configuration and myZone setting, this command may not have any effect.

### Setpoint Up

The Setpoint Up command can be used to raise the setpoint for the entire system. Depending on your zone configuration and myZone setting, this command may not have any effect.

## **Setpoint Down**

The Setpoint Down command can be used to lower the setpoint for the entire system. Depending on your zone configuration and myZone setting, this command may not have any effect.

## **Set Fan**

The Set Fan setting can be used to set the current fan mode, with High, Medium, Low and Auto being possible settings. Depending on your zone configuration, this command may not have any effect.

## **Zone Commands**

Each zone has its own control options listed below. In general these will only affect the zone you specify, but some system options can override this - like the MyZone option. Each of the 12 available zones has the same functions.

### **Power On [TAG: Stat On]**

This will send the power on command to the specified zone, allowing that zone to be used.

### **Power Off [TAG: Stat Off]**

This will send the power off command to the specified zone, allowing that zone individually turned off.

### **Change A/C Setpoint**

The Change setpoint command can be used to set a specific setpoint for the specified zone. Depending on your zone configuration this command may not have any effect.

### **Setpoint Up [TAG: Stat Setpoint Up]**

The Setpoint Up command can be used to raise the setpoint for the specified zone. Depending on your zone configuration this command may not have any effect.

### **Setpoint Down [TAG: Stat Setpoint Down]**

The Setpoint Down command can be used to lower the setpoint for the specified zone. Depending on your zone configuration this command may not have any effect.

# Driver Variables

## Air Conditioning Variables

### A/C Name [string]

This variable contains the name of your system as its been programmed in the MyAir setup.

### A/C Setpoint [number]

The A/C Setpoint variable contains the current setpoint value in Celsius.

### A/C Fan State [string]

The A/C Fan State contains the current Fan speed as a string. The possible options are

Fan State	Variable Value
Fan Low	Low
Fan Medium	Medium
Fan High	High
Fan Auto	Auto

### Fresh Air State [boolean]

The Fresh Air State variable will be true is Fresh Air is available and false if it is not.

### Time To On [number]

The Time To On variable will give you a number representing the number of minutes before the system will turn on automatically. NOTE: This will only have a value if you have used the schedule to turn the unit on.

### Time To Off [number]

The Time To Off variable will give you a number representing the number of minutes before the system will turn on automatically. NOTE: This will only have a value if you have used the schedule to turn the unit off.

## Zone 1 - 12 Variables

### Zone Name [string]

This variable contains the name for this zone as its been programmed in the MyAir setup.

**Zone Power [boolean]**

The Zone Power variable will be true if the zone is currently active and false if it is not.

**Zone Setpoint [number]**

The Zone Setpoint variable contains the current setpoint for this zone value in Celsius.

**Airflow Percentage [number]**

The Airflow Percentage variable represents the amount of air flowing based on the position of the damper.  
The value is a percentage.

## Driver Events

### System Events

#### **Zone 1 - 12 Power On [TAG: zoneXPowerOn where X is 1 - 12]**

The Zone 1 - 12 Power On event will trigger when the matching zone is powered on.

#### **Zone 1 - 12 Power Off [TAG: zoneXPowerOn where X is 1 - 12]**

The Zone 1 - 12 Power Off event will trigger when the matching zone is powered off.

## Frequently Asked Questions

### Why is this product exciting?

Advantage Air is a major HVAC manufacturer in Australia whose products are heavily utilised in both Western Australia, Queensland and South Africa. Integration of their MyAir product allows for a wider range of HVAC solutions for Australian RTI consumers and dealers.

### What HVAC systems can I use this driver with?

MyAir controls Samsung, Daikin, Fujitsu, LG, Panasonic, Toshiba, Hitachi, Mitsubishi Electric, Mitsubishi Heavy Industries, Carrier and Midea air-conditioners. MyAir's touchscreen controls both the air-conditioning unit and air management system, so there's no need for 2 control panels. Talk to your Advantage Air representative today about 3rd party integration solutions.

### Where can i purchase Advantage Air?

Advantage Air is sold in both Australia and South Africa. For more information please visit the Advantage Air website

<https://www.advantageair.com.au>

### Do you offer showroom discounts?

We offer dealers a free showroom licence for demonstration and educational purposes. See link below for T&C's and signup procedure.

[Chowmain Dealer Showroom FAQ](#)

### I want to try this driver out before buying it?

All Chowmain drivers come with a 90 day trial, no registration required.