

# Kaleidescape Installation and Usage Guide



# kaleidescape

**Version:** 2024.7.30  
**Date:** Tuesday, July 30, 2024  
**Authors:** Alan Chow

chowmainsoft

# Contents

<b>Overview.....</b>	<b>4</b>
<b>Features.....</b>	<b>5</b>
<b>FAQ.....</b>	<b>7</b>
Can you give us some examples of how we could use this driver?.....	7
I like the official kaleidescape app. Can i use that?.....	7
What hardware will this work on?.....	7
How have you integrated the library?.....	7
Do you offer showroom discounts?.....	7
I want to try this driver out before buying it?.....	8
<b>CHANGELOG.....</b>	<b>9</b>
Version 2024.7.30 - 30-JUL-2024.....	9
Version 1.0.9 - 14-FEB-2024.....	9
Version 1.0.8 - 30-OCT-2023.....	9
Version 1.0.7 - 22-DEC-2021.....	9
Version 1.0.6 - 11-NOV-2021.....	9
Version 1.0.4 - 20-OCT-2021.....	9
Version 1.0.3 - 16-OCT-2021.....	9
Version 1.0.2 - 15-OCT-2021.....	10
Version 1.0.1 - 08-OCT-2021.....	10
Version 1.0.0 - 04-OCT-2021.....	10
<b>Setup.....</b>	<b>11</b>
g! Configuration.....	11
Installation Process.....	11
g! CONFIGURATION DETAILS.....	16
COMMON MISTAKES.....	19
<b>Licensing.....</b>	<b>20</b>
<b>Creating a Project on Driver Central.....</b>	<b>20</b>
<b>Purchasing a Driver Licence.....</b>	<b>21</b>
<b>Install the driverCentral cloud driver.....</b>	<b>22</b>
<b>Install Chowmain driver.....</b>	<b>23</b>



## Overview

Kaleidescape presents the world's most authentic cinematic experience with the content you love. Whether on disc or as a digital download from the Kaleidescape Movie Store, Kaleidescape brings together all your movies in a visually stunning library making it beautifully simple to access and enjoy movies that truly matter to you.

A premium product deserves an excellent interface to match as such the Chowmain Kaleidescape driver for ELAN offers full movie and music library access for any IP controlled Kaleidescape system along with an extensive list of automation features that make the integrated experience more rewarding.

Put the finishing touch on your customer's Kaleidescape system using our driver for ELAN.

## Features

- Bi-directional IP control over Kaleidescape Systems
- Library functionality
  - Cover Art Browsing
  - Ability to browse movies by
    - All Movies
    - By Collections
    - By Actor
    - By Director
    - By Genre
    - By Rating
  - Ability to browse music by
    - All Artists
    - By Album
    - By Genre
    - By Mix Album
  - Player Control
  - Replicates all functionality of the original Kaleidescape remote
  - Now Playing information
  - Events Maps
  - Screensaver – On / Off
  - Power – On / Off
  - Playback State – Play, Pause, Stop, Fast Forward, Fast Reverse
  - Masking – Unknown, 1.33, 1.66, 1.78, 1.88, 2.35
  - Frame – 4x3, 16x9

- Lighting – Menu, Movie Playing, Intermission, End Credits
- Current Color – HDR, SDR, SMPTE ST 2084
- Aspect Ratio – 16:9, CinemaScope 2.35 Anamorphic, CinemaScope 2.35 Letterbox, CinemaScope Native 2.35 Display
- Scaling – None, CinemaScope Scale Mode Anamorphic, CinemaScope Scale Mode Zoom
- Content Type - Disc inserted, Disc ejected, DVD currently playing, Video Stream currently playing, Blu-ray Disc currently playing
- User Defined Event – VOLUME\_DOWN, VOLUME\_UP, TOGGLE\_MUTE

## FAQ

### Can you give us some examples of how we could use this driver?

- Browse and initiate playback of movies and music on your ELAN touchscreens
- Automate cinema lighting based on movie playback state (play, pause, stop), movie position (main feature, credits, etc).
- Automate projection screen masking and projection modes using aspect ratio feedback, masking feedback and more.
- Volume up, down and mute event maps allow linking volume controls of the official Kaleidescape app to ELAN.
- Playback state event maps allow programmatic source selection if using the official Kaleidescape app.
- Set the driver up so it automatically turns off when the screensaver kicks in. Great if you forget that you've paused a movie or have fallen asleep whilst watching

### I like the official kaleidescape app. Can i use that?

Yes you can. We have set the driver up so that in dedicated theaters you can just pick up your iPad and you can use the official kaleidescape application by itself without ever touching an ELAN user interface. ELAN will automatically turn on the projector, dim the lights, etc when a movie is selected and when a movie has finished it will automatically turn everything off and bring the lights up. Note you will need to program event maps for volume control (up, down, mute), playback state (play, stop) and screensaver in order to achieve this.

### What hardware will this work on?

This driver will work on all Kaleidescape models.

### How have you integrated the library?

The guys at Kaleidescape provided us with a special Chowmain specific API key that allows us to access their library API. This key is tied to us as a company and no one else is allowed to use the key but us.

### Do you offer showroom discounts?

We offer dealers a free showroom licence for demonstration and educational purposes. See link below for T&C's and signup procedure.

## **I want to try this driver out before buying it?**

All Chowmain drivers for ELAN come with a 90 day trial.



# CHANGELOG

## Version 2024.7.30 - 30-JUL-2024

- Modernise Backend
- Add Improved Troubleshooting and Submit Diagnostics support
- Upgrade Communication Stack

## Version 1.0.9 - 14-FEB-2024

- Fixed issue where the event map for playing fires consistently whilst playing.

## Version 1.0.8 - 30-OCT-2023

- Added support for HR30 remote
- Fixed SEND\_TO\_SYSLOG function
- Improved Sessions

## Version 1.0.7 - 22-DEC-2021

- Fixed issue with now playing cover art not displaying on systems that have seperate server / player setups.

## Version 1.0.6 - 11-NOV-2021

- Fixed issue with number buttons not outputting numbers correctly
- Changed Player Now Playing image from high resolution to normal resolution to resolve rendering issues
- Added Co-Star drop down to library driver. This will force selection of movies to always resume playback. This gets around a bug in Kaleidescape systems with Co-Star not starting playback in all content. This is only temporary until Kaleidescape fixes their bug.
- Added popup for playback issues warning the user to make sure the disc is inserted (as if its not it won't play).

## Version 1.0.4 - 20-OCT-2021

- Added HR2, TS2 and HR10 interfaces for player driver.

## Version 1.0.3 - 16-OCT-2021

- Fixed bug affecting initiating playback from systems with a seperate server / player.

## **Version 1.0.2 - 15-OCT-2021**

- Added support for systems that do not support newer APIs for player now playing data and artwork.

## **Version 1.0.1 - 08-OCT-2021**

- Fixed issue affecting playback of movies when selected under the 'All Movies' page

## **Version 1.0.0 - 04-OCT-2021**

- Initial Release

# Setup

## g! Configuration

The driver requires a valid licence for use. Licences can be purchased from Chowmain's distributor driverCentral. Customers can also trial the driver out for 90 days prior to licence purchase. Dealers who have showrooms can demonstrate the driver for free via the Chowmain Dealer Showroom Licence. You can apply for this licence via the Chowmain website. Please follow the steps below. If you encounter any issues please submit a ticket via the driverCentral website.

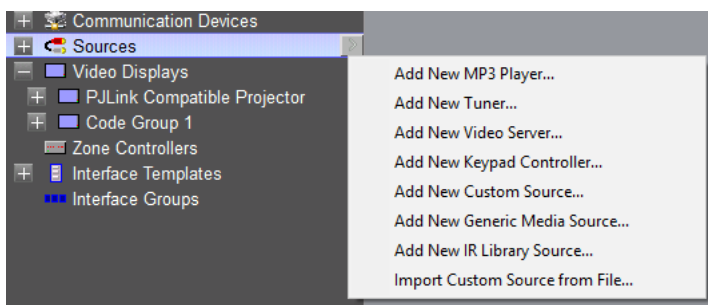
## Installation Process

The driver comprises of two components. Kaleidescape (LIBRARY) and Kaleidescape (PLAYER). In order to use it correctly you will need to add in a Generic Single Zone Controller as a method to assign two sources to the same input.

1. Download the latest version of the driver from our distributor driverCentral.
2. Extract the files to your preferred ELAN driver storage location.
3. In configurator click on the Media tab

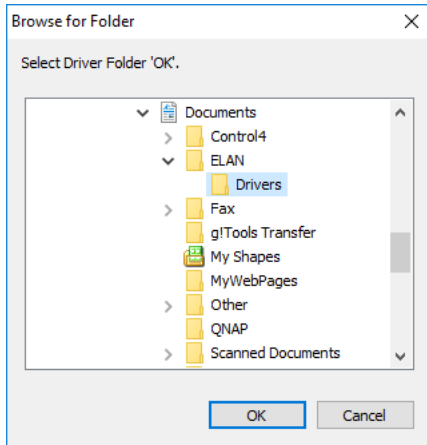


4. Click on the arrow next to Sources Devices
5. Click on Add New Generic Media Source

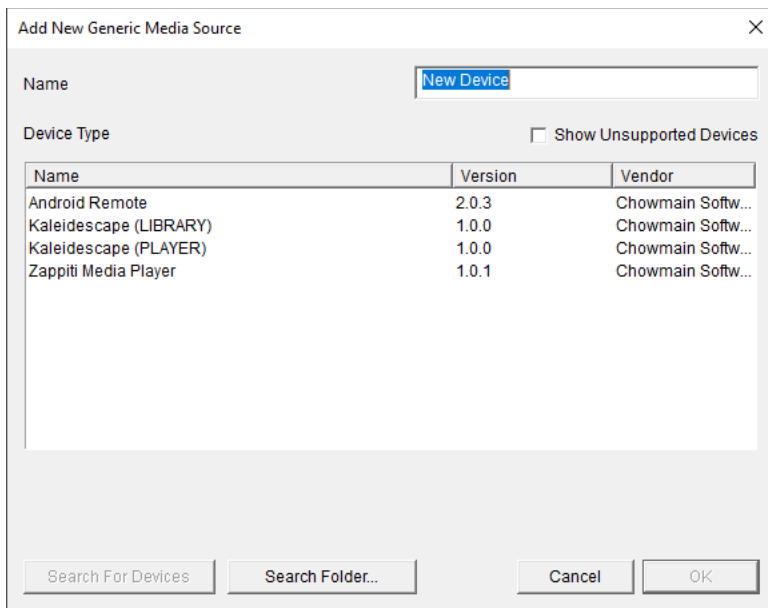


6. Click on the Search Folder button

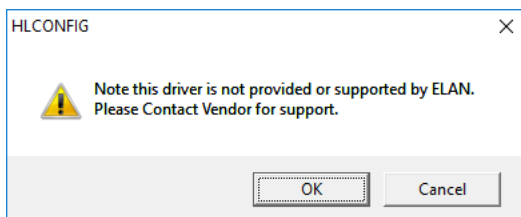
7. Select your driver folder and press ok



8. Select the Kaleidescape (LIBRARY) driver.

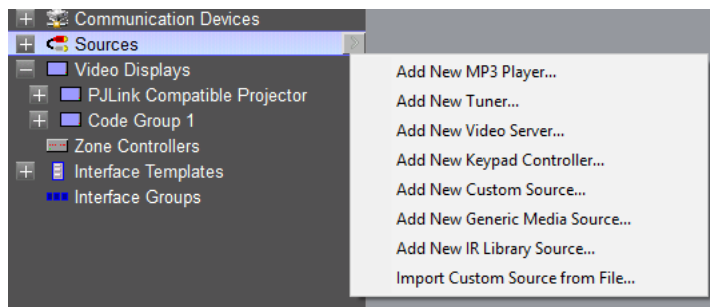


9. Configurator will warn you that the driver is not provided or supported by Elan. Click on OK.

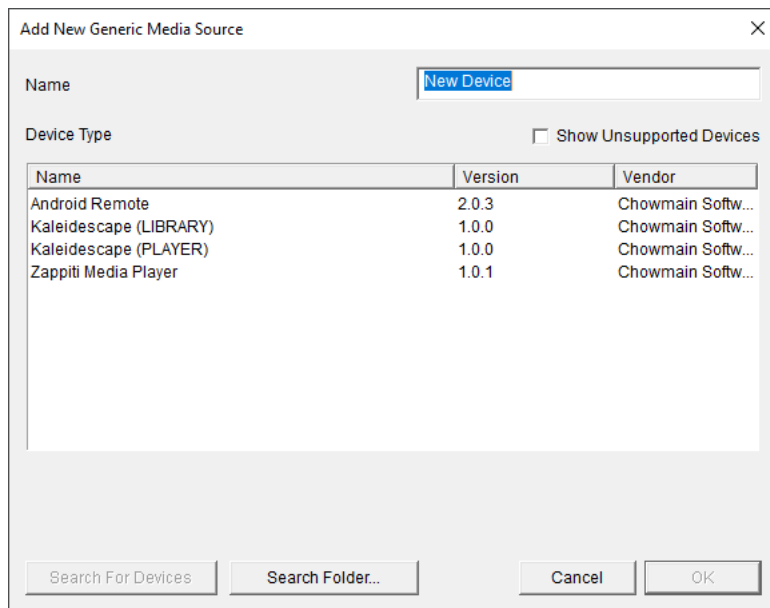


10. Click on the arrow next to Sources Devices

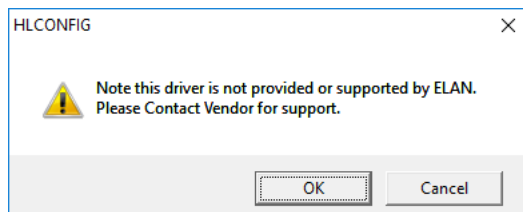
11. Click on Add New Generic Media Source



12. Select the Kaleidescape (PLAYER) driver.



13. Configurator will warn you that the driver is not provided or supported by Elan. Click on OK.

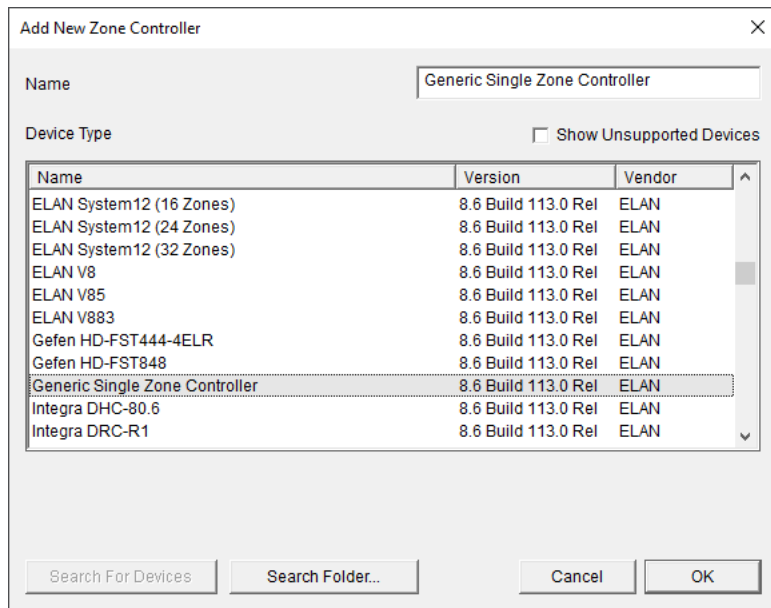


14. Click on the arrow next to Zone Controllers

15. Click on Add New Zone Controller



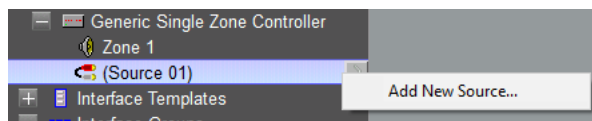
## 16. Select the 'Generic Single Zone Controller'



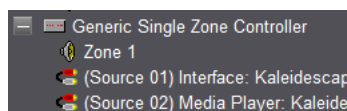
## 17. Push the + button next to the Generic Single Zone Controller

## 18. Push the " button next to (Source 01)

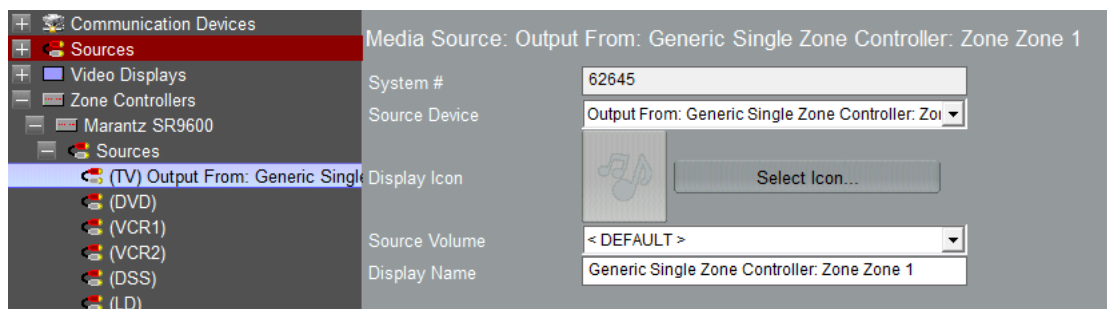
## 19. Click on Add New Source



## 20. Select Kaleidescape (PLAYER) and Kaleidescape (LIBRARY) for each source. We have also included some icons you can utilize as the Display Icon. Please use your preferred icon. It should look like the following screenshot if you have set it up correctly.



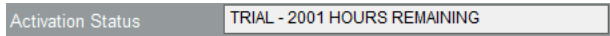
## 21. Select the Generic Single Zone Controller as a source for your real zone controller



## 22. For each interface make sure you remove the Generic Zone Controller Zone from the interface.

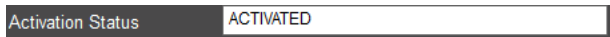
## 23. Highlight the Kaleidescape (PLAYER) driver under the media tab.

24.The driver will advise you that you have 90 days to test the driver out. If you have purchased an activation key please type it in here then click on Apply.



Activation Status TRIAL - 2001 HOURS REMAINING

25.Note that if you have typed in a valid activation key your status will change to ACTIVATED (you need to click off of the driver onto something else and back again to see the changes to the status).



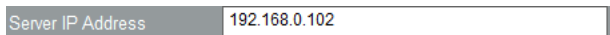
Activation Status ACTIVATED

26.Select the power off mode. Note that Stop will keep the unit alive and will be more reactive. Standby requires some time for the system to boot and is much slower.

27.Enter the Control Protocol Device ID. Note that in most cases the default (1) is correct.

28.Enter the Music Zone ID. Note that this is only applicable to models that have more than 1 zone of audio for that player.

29.Enter the IP Address of the Kaleidescape Server. This will be the library associated with the player.



Server IP Address 192.168.0.102

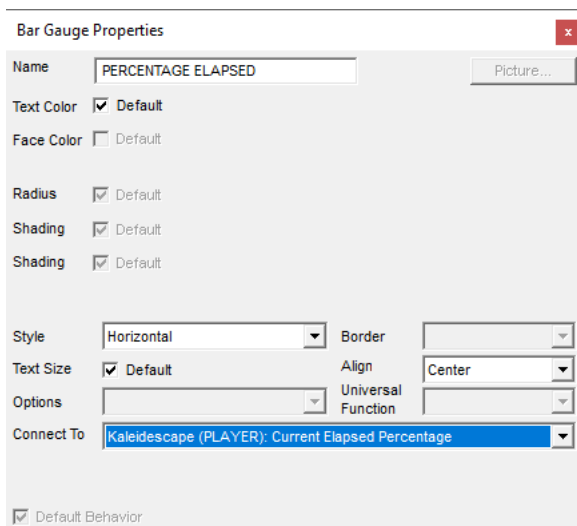
30.Enter the IP Address of the Kaleidescape Player.



IP Address 192 . 168 . 0 . 102

31.Click on each page layout and highlight percentage elapsed (need to do this for Large and Small)

32.Select Kaleidescape (PLAYER): Current Elapsed Percentage. Note we need to do this due to a bug in EDS not allowing us to preassign bar gauges to variables.



Bar Gauge Properties

Name: PERCENTAGE ELAPSED

Text Color: ☒ Default

Face Color: ☐ Default

Radius: ☒ Default

Shading: ☒ Default

Shading: ☒ Default

Style: Horizontal

Border:

Text Size: ☒ Default

Align: Center

Options:

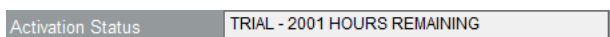
Universal Function:

Connect To: Kaleidescape (PLAYER): Current Elapsed Percentage

☒ Default Behavior

33.Highlight the Kaleidescape (LIBRARY) driver under the media tab.

34.The driver will advise you that you have 90 days to test the driver out. If you have purchased an activation key please type it in here then click on Apply.



Activation Status TRIAL - 2001 HOURS REMAINING

35. Note that if you have typed in a valid activation key your status will change to ACTIVATED (you need to click off of the driver onto something else and back again to see the changes to the status).

Activation Status	ACTIVATED
-------------------	-----------

36. Select the power off mode. Note that Stop will keep the unit alive and will be more reactive. Standby requires some time for the system to boot and is much slower.

37. Enter the Control Protocol Device ID. Note that in most cases the default (1) is correct.

38. Enter the Music Zone ID. Note that this is only applicable to models that have more than 1 zone of audio for that player.

39. Enter the IP Address of the Kaleidescape Server. This will be the library associated with the player.

Server IP Address	192.168.0.102
-------------------	---------------

40. Enter the IP Address of the Kaleidescape Player.

IP Address	192 . 168 . 0 . 102
------------	---------------------

41. Congratulations you have successfully setup the Kaleidescape driver for ELAN. If required please add event maps for the desired event maps (eg aspect ratio changes, masking, frame, etc).

## g! CONFIGURATION DETAILS

The following table provides settings used in Configurator when connecting to Kaleidescape devices. Please refer to the Configurator Reference Guide for more details.

Devices	Variable Name	Setting	Comments
Generic Media Device Kaleidescape (PLAYER)	Name	" User Defined"	
	System#	" Auto Detect"	
	Driver Version	" Auto Detect"	
	Driver Vendor	Chowmain Software & Apps	
	Device Type	Kaleidescape (PLAYER)	
	Activation Key	" User Defined" This is the driverCentral activation Key	See Note 1
	Activation Status	" Auto Detect" This provides the licence status feedback	See Note 1
	Server IP Address	" User Defined" This is the IP address of the	See Note 2



Devices	Variable Name	Setting	Comments
		Kaleidescape Server / Library	
	Player Device Name	"Auto Detect" Pretty name of the Kaleidescape player	
	SystemVersion	"Auto Detect" Player software version	
	Device Type Name	"Auto Detect" Player model.	
	Power Off Mode	"User Defined" Select behavior for when off command is sent from ELAN	See Note 3
	Control Protocol Device ID (CPDID)	"User Defined" CPDID number for the player. See Note 4	
	Music Zone ID	"User Defined" Music Zone ID for the player	See Note 5
	IP Address	"User Defined" This is the IP Address of the Kaleidescape Player	See Note 6

## Notes

1. The driver requires a valid licence for use. Licences can be purchased from the driverCentral website. All of the licences are site licences. This means that you can use as many instances of the driver as you want in a single system with the one licence. The driver also comes with a built in 90 day trial. The driver will provide feedback as to the state of the licence in the Activation Status field.
2. The server IP address is required for now playing feedback on the player driver. Without a valid server IP address artwork and now playing meta data will not be displayed. Please make sure that it is on a static IP address or reservation. Change of IP address will result in loss of control.
3. This adjusts the behavior of the driver for sending power off commands. Standby will send a standby command and stop will send a stop then idle command. Note that standby takes a period of time to exit and as such we do not recommend it unless the customer is ok with waiting.
4. CPDID default of 1 is ok in most cases. Only change if you know what you are doing.
5. Music Zone ID default of 1 is ok in most cases. Only change if you have more than one zone outputting of the same player.
6. This is the IP Address of the Kaleidescape Player. Please make sure that it is on a static IP address or reservation. Change of IP address will result in loss of control.

Devices	Variable Name	Setting	Comments
Generic Media Device Kaleidescape (Library)	Name	" User Defined"	
	Kaleidescape (LIBRARY)		
	System#	" Auto Detect"	
	Driver Version	" Auto Detect"	
	Driver Vendor	Chowmain Software & Apps	
	Device Type	Kaleidescape (LIBRARY)	
	Activation Key	" User Defined" This is the driverCentral activation Key	See Note 1
	Activation Status	" Auto Detect" This provides the licence status feedback	See Note 1
	Server IP Address	" User Defined" This is the IP address of the Kaleidescape Server / Library	See Note 2
	Player Device Name	" Auto Detect" Pretty name of the Kaldeisceape player	
	System Version	" Auto Detect" Player software version	
	Device Type Name	" Auto Detect" Player model.	
	Available Sources	" User Defined" Changing this will enable Music / Movies icons	See Note 3
	Power Off Mode	" User Defined" Select behavior for when off command is sent from ELAN	See Note 4
	Control Protocol Device	" User Defined" CPDID number for the player.	See Note 5
	ID (CPDID)		
	Music Zone ID	" User Defined" Music Zone ID for the player	See Note 6
	IP Address	" User Defined" This is the IP Address of the Kaledescape Player	See Note 7

## Notes

1. The driver requires a valid licence for use. Licences can be purchased from the driverCentral website. All of the licences are site licences. This means that you can use as many instances of the driver as you want in a single system with the one licence. The driver also comes with a built in 90 day trial. The driver will provide feedback as to the state of the licence in the Activation Status field.
2. The server IP address is required for now playing feedback on the player driver. Without a valid server IP address artwork and now playing meta data will not be displayed. Please make sure that it is on a static IP address or reservation. Change of IP address will result in loss of control.
3. This will adjust the root icons to show Movies, Music or both. Change this depending on what is available on the system.
4. This adjusts the behavior of the driver for sending power off commands. Standby will send a standby command and stop will send a stop then idle command. Note that standby takes a period of time to exit and as such we do not recommend it unless the customer is ok with waiting.
5. CPDID default of 1 is ok in most cases. Only change if you know what you are doing.
6. Music Zone ID default of 1 is ok in most cases. Only change if you have more than one zone outputting of the same player.
7. This is the IP Address of the Kaleidescape Player. Please make sure that it is on a static IP address or reservation. Change of IP address will result in loss of control.

## COMMON MISTAKES

1. IP Address needs to be on a static IP address or IP reservation (this should be for both server and player)
2. IP Address of server not entered in – This is used for library and now playing.
3. IP Address of player not entered in – This is used for transport and navigation based controls along with event map feedback.
4. Generic Single Zone Controller not installed (please follow the instructions).

## Licensing

- How does the trial period work?

All Chowmain drivers are free to use for a set trial period. When the trial expires the driver will cease to function until you purchase a licence and apply it to the driverCentral project.

- Where do I buy a Licence from?

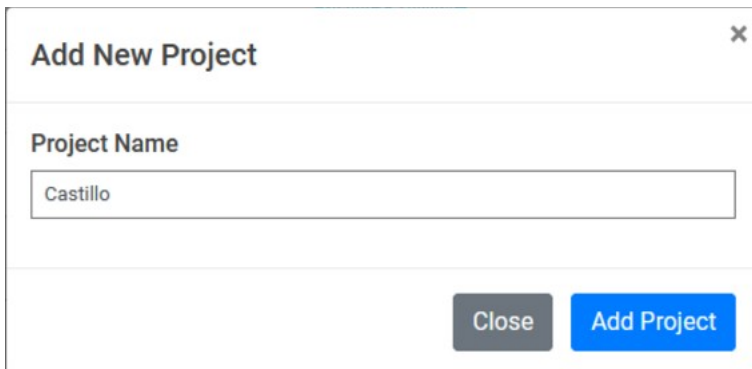
This driver is developed by Chowmain software & Apps and is distributed by driverCentral, Inc  
<https://www.drivercentral.io/chowmain-ltd>

To purchase a driver:


1. On driverCentral, purchase a license and register it to your project
2. If the driver is not already installed in your project, download it and install it
3. If necessary, use the cloud driver's Action: "Check Drivers" to force the licence to download into the project

## Creating a Project on Driver Central


1. Visit <http://www.drivercentral.io>
2. Log into your driver Central dealer account
3. Click **Portal**
4. Click **New Project**
5. Enter the project name



6. Click **Add Project**
7. Click on the project we just created

Project	Status	Created
 Castillo	<span style="background-color: yellow;">Unassigned Project</span>	1999-12-31 23:59:56

- Take note of the **Project Token** as this will be used later when we install the Cloud Driver

Castillo 




Project Token:  
ABCDEFG012

MAC:  
000FFF123456

IP:  
1.2.3.456

Connection Status:  
Offline

Last Seen:

Actions:  
  

There are no drivers attached to this project.

Close

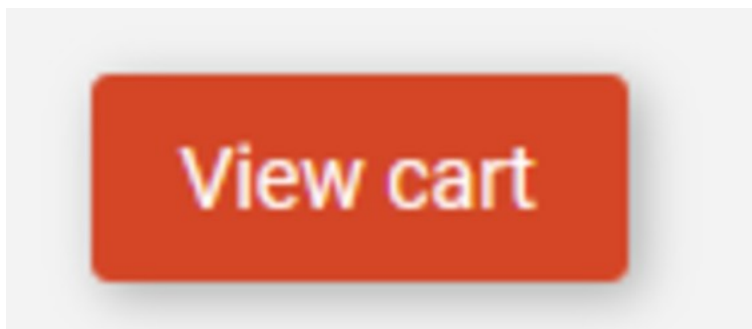
- Click **Close**

## Purchasing a Driver Licence

- Visit <https://www.drivercentral.io/chowmain-ltd/> and find the product/driver you want to purchase a licence for
- Click on **Add to Cart**

ADD TO CART

- Now click the shopping cart icon (top right) and click **View cart**



- Confirm that your order is correct and click on **Proceed to checkout**

Proceed to checkout

- Choose your payment option, provide the relevant details and click **Place order**

**Checkout**

**Paypal**  
Paypal, or Credit Card...

**Credit Card**  
Visa, Mastercard, etc...

☐ Select this check box to accept the [Terms and Conditions](#)

☐ Subscribe to our newsletter

**Place order ( \$190.00 )**

6. You will now be at a page where you can see your purchased licence

License Name	License Key	Project Assigned	Action
[Redacted License Information]			<a href="#">Assign to Project</a>

7. From here assign the licence to the project we created or if you did not follow that step create a new project

### License Assignment for 221

#### Assign License to Existing Project

Select Existing Project:

New Project (enter project name below) ▼

**Or...**

#### Create a new project

Enter New Project Name

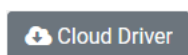
Enter email for Installer Notifi

Are you sure you want to do this?

Assign License to Project?

## Install the driverCentral cloud driver

1. Visit <http://www.drivercentral.io>
2. Log into your driver Central dealer account
3. Click **Portal**
4. Click **Cloud Driver**



5. Copy the C4Z driver to My Documents\Control4\Drivers directory
6. Add the driver to your project
7. Click on the driver to view it's properties

Cloud Status	Please enter cloud project token below...
Project Information	(1) Total, (0) Licensed, (0) Trials, (1) Expired, (0) Updates.
Driver Version	1001
Project Token	<input type="text"/>
	Project token from driverCentral.io project portal
Driver Actions	<input type="button" value="v"/>
Debug Mode	Off <input type="button" value="v"/>

8. Type in the project token we took note of earlier
9. Click **Actions** tab
10. Click **Check Drivers**

## Install Chowmain driver

1. Install the Chowmain driver
2. You will notice that the Activation Status reflects a Licence Activated state
3. Any driver that does not have a purchased licence will have a trial licence activated via the marketplace  
*Note that there is no way to reactivate the trial so please use wisely*
4. If you do not then press the Check Drivers action in the driverCentral Cloud driver again

Activation Status	Update Available!!! License Activated
Driver Version	1002
Driver Information	Navigate to connections tab and make serial binding
Automatic Updates	Off <input type="button" value="v"/>