

# Advantage Air Installation and Usage Guide



**Version:** 2024.7.29  
**Date:** Monday, July 29, 2024  
**Authors:** Alan Chow

chowmainsoft

# Contents

<b>Overview.....</b>	<b>4</b>
<b>Features.....</b>	<b>5</b>
<b>Setup.....</b>	<b>6</b>
Requirements.....	6
Installation Process.....	6
Common Mistakes.....	8
<b>Configuration Details.....</b>	<b>8</b>
<b>FAQ.....</b>	<b>10</b>
Why is this product exciting?.....	10
What HVAC systems can i use this driver with?.....	10
Where can i purchase Advantage Air?.....	10
My Advantage Air system has multiple AC's connected to it. Does your driver support multi AC's?.....	10
Can I control individual zones with this driver?.....	10
Can I schedule the HVAC system using this?.....	10
I want to try this driver out before buying it?.....	10
<b>Licensing.....</b>	<b>11</b>
<b>Creating a Project on Driver Central.....</b>	<b>11</b>
<b>Purchasing a Driver Licence.....</b>	<b>12</b>
<b>Developer Information.....</b>	<b>14</b>
<b>Support.....</b>	<b>15</b>
Ticket / Live Chat Support.....	15
Phone Support.....	15
Driver Documentation.....	15
<b>CHANGELOG.....</b>	<b>16</b>
Version 2024.7.29 - 29 July 2024.....	16
Version 1.0.3 - 20 March 2024.....	16
Version 1.0.2 - 10 January 2024.....	16
Version 1.0.1 - 24 January 2022.....	16
Version 1.0.0 - 25 August 2021.....	16



## Overview

Advantage Air is an Australian based HVAC manufacturer based in Perth, Western Australia that sells HVAC systems in Australia and South Africa. MyAir is Advantage Air's premium reverse cycle air conditioning system with 10 zones and individual room airflow control.

Chowmain's MyAir driver will work with all models of MyAir by providing two way control and feedback.

## Features

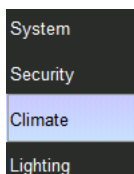
- Two way IP control
- Control of upto all 4 AC units attached to MyAir
- Room temperature feedback (From MyAir Temp Sensors)
- HVAC mode, Setpoint and Fan control
- Fresh Air control
- Timer functionality (Turn on/off AC after x minutes – upto 12 hours).
- Control of each zone attached to AC units
  - Set as MyZone
  - Zone can be turned on/off
  - Zone temperature feedback (if sensor available in zone)
  - Zones can have airflow control (for those without temperature sensors)
  - Zones can have setpoint control (for those with temperature sensors)

## Requirements

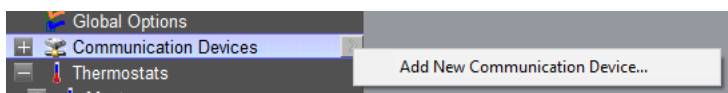
- Nice Home Management Core 8.8.600 or later is required
- Internet is required for licence activation

## Installation Process

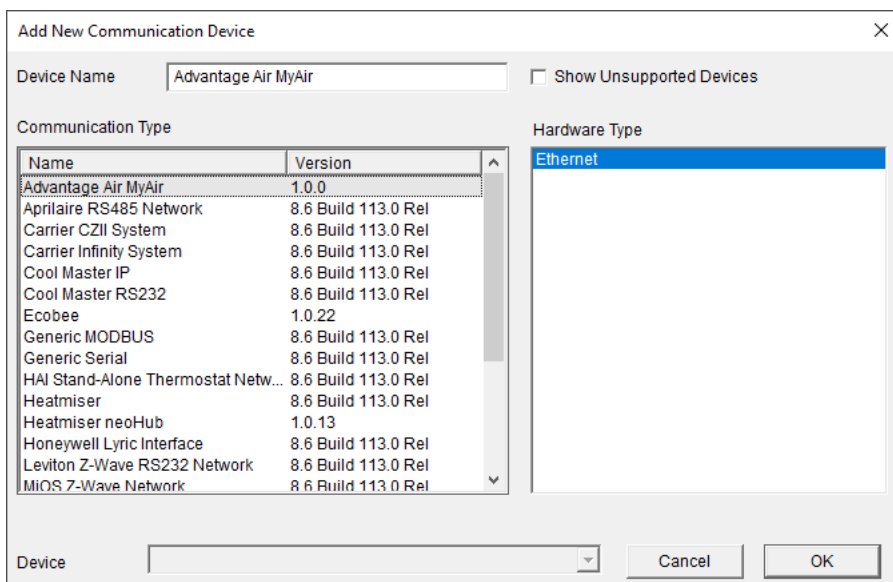
1. Download the latest version of the driver
2. Extract the file to your preferred driver storage location.
3. In configurator click on the Climate tab



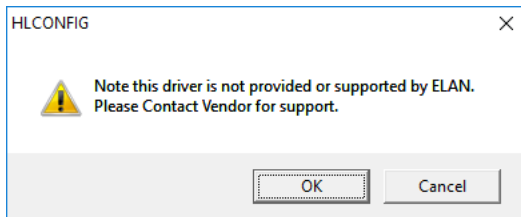
4. Click on the arrow next to Communication Devices
5. Click on Add New Communication Device



6. If you have not set up a 3rd party driver before you'll need to setup the default folder for 3rd party drivers. If you have already done this before then you can skip this step.
  - a. Click on the Search Folder button
  - b. Select your driver folder and press ok
7. Select the Advantage Air MyAir driver for your control type.



8. Configurator will warn you that the driver is not provided or supported by Elan/NICE Home Management. Click on OK.



9. Highlight the Advantage Air MyAir driver.  
10. Enter the IP Address of the Advantage Air MyAir touchscreen.

**NOTE:** The Advantage Air MyAir touchscreen should be assigned a static or reserved IP address and should also have its apps updated to the latest versions (via Google Play Store).

IP Address	172 . 16 . 16 . 196
------------	---------------------

11. If the driver connects successfully it will import the aircons and also update the system name, system type and aircon dealer's phone number.

System Name	MyPlace
System Type	MyAir5
Dealer Phone Number	99643433

12. Press the Import AC button. The driver will import the ACs. You will notice the Number of Aircons increase to the number you have. Note that ACs are not the same as Zones. You can have up to 4 ACs with 10 zones per AC in a MyAir system.

Number of Aircons	3
-------------------	---

13. You can adjust the poll interval if desired.

Poll Interval (Seconds)	15
-------------------------	----

14. Now that the AC systems have imported in you must set up the zones on a custom page.

15. For each AC you need to add the following controls

Slider Control - My Zone		Advantage Air MyAir: AC1_MYZONE
Slider Control - Timer On		Advantage Air MyAir: AC1_TIMED_ON
Slider Control - Timer Off		Advantage Air MyAir: AC1_TIMED_ON
Button Momentary - Event map to Fresh Air Control On / Fresh Air Control Off		Advantage Air MyAir: AC1_ZONE01_STATE

16. For each zone (per AC) you need to add the following controls.

**NOTE:** Please refer to the MyAir touchscreen to find out the capabilities of each zone. A Zone will

either have airflow or setpoint not both. It will have a setpoint if it has a temperature sensor installed.



17.Driver will operate as a trial, until activated

18.Congratulations you have successfully setup the Advantage Air driver

## Common Mistakes

1. Advantage Air MyAir touchscreen IP Address needs to be on a static IP address or IP reservation
2. Advantage Air MyAir touchscreen apps are out of date. Advantage Air did an overhaul for their API a few years back so older systems (and newly installed systems) have out of date apps. Please make sure the apps are updated via Google Play Store.
3. Zones are controlled via a custom page. You will need to create your own page mapping available zones and controls dependant on what each zone is capable of.

## Configuration Details

The following table provides settings used in Configurator when connecting to Advantage Air devices. Please refer to the Configurator Reference Guide for more details.

Devices	Variable Name	Setting	Comments
Communications Device (Advantage Air MyAir)	Name		
	System#		
	Driver Version		
	Driver Vendor	Chowmain Software & Apps	
	Activation Key	This is the driverCentral activation Key	See Note 1
	Activation Status	This provides the licence status feedback	See Note 1
	Number of Aircons	This is the number of aircons that that are connected to MyAir	
	System Name	This is the name the MyAir installer set up on the touchscreen.	



Devices	Variable Name	Setting	Comments
	SystemType	This is the MyAir type	
	Dealer Phone Number	This is the MyAir installer's phone number	
	Poll Interval	This is how often the driver should poll Advantage Air for feedback	
	IP Address	This is the IP address of the Advantage Air MyAir Touchscreen	See Note 2

## FAQ

### Why is this product exciting?

- Advantage Air is a major HVAC manufacturer in Australia whose products are heavily utilised in both Western Australia, Queensland and South Africa. Integration of their MyAir product allows for a wider range of HVAC solutions for Australian NICE Home Management consumers and dealers.

### What HVAC systems can i use this driver with?

- MyAir controls Samsung, Daikin, Fujitsu, LG, Panasonic, Toshiba, Hitachi, Mitsubishi Electric, Mitsubishi Heavy Industries, Carrier and Midea air-conditioners. MyAir's touchscreen controls both the air-conditioning unit and air management system, so there's no need for 2 control panels. Talk to your Advantage Air representative today about 3rd party integration solutions.

### Where can i purchase Advantage Air?

- Advantage Air is sold in both Australia and South Africa. For more information please visit the Advantage Air website  
<https://www.advantageair.com.au>

### My Advantage Air system has multiple AC's connected to it. Does your driver support multi AC's?

- Yes our driver will support upto 4 AC's which are connected to the MyAir system. This is the current maximum.

### Can I control individual zones with this driver?

- Yes our driver automatically imports in all zones associated with the each AC and will allow you to either control the setpoint or control the airflow percentage. One zone should be set as MyZone so that the HVAC system has a reference point.

### Can I schedule the HVAC system using this?

- Yes our driver has built in presets and scheduling. The driver can also utilise the built in timer to turn on and off MyAir.

### I want to try this driver out before buying it?

- All Chowmain drivers for NICE Home Management comes with a 90 day trial.

## Licensing

- How does the trial period work?

All Chowmain drivers are free to use for a set trial period. When the trial expires the driver will cease to function until you purchase a licence and apply it to the driverCentral project.

- Where do I buy a Licence from?

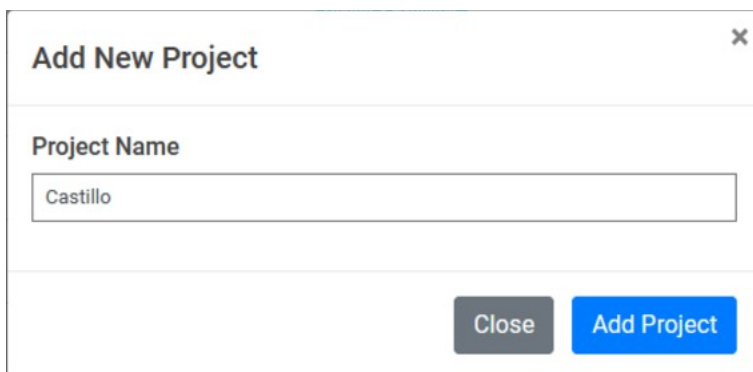
This driver is developed by Chowmain software & Apps and is distributed by driverCentral, Inc  
<https://www.drivercentral.io/chowmain-ltd>

To purchase a driver:


1. On driverCentral, purchase a license and register it to your project
2. If the driver is not already installed in your project, download it and install it
3. If necessary, use the cloud driver's Action: "Check Drivers" to force the licence to download into the project

## Creating a Project on Driver Central

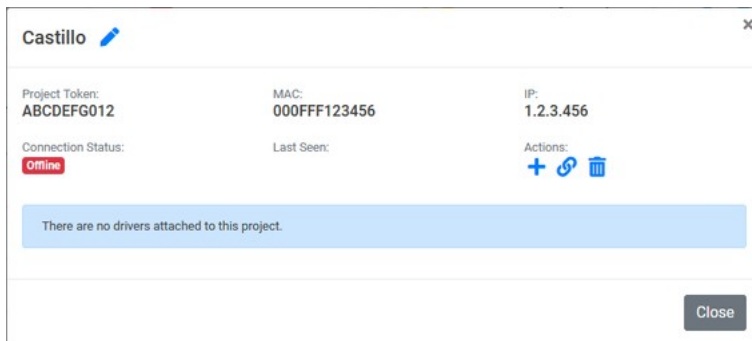
1. Visit <http://www.drivercentral.io>
2. Log into your driver Central dealer account
3. Click **Portal**
4. Click **New Project**
5. Enter the project name



6. Click **Add Project**
7. Click on the project we just created

Project	Status	Created
 Castillo	<span style="background-color: yellow;">Unassigned Project</span>	1999-12-31 23:59:56

- Take note of the **Project Token** as this will be used later when we install the Cloud Driver



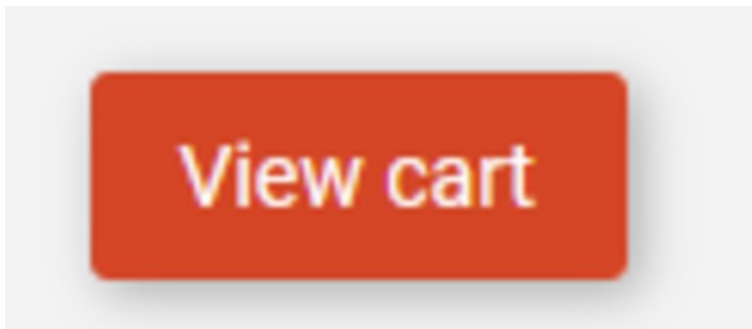
- Click **Close**

## Purchasing a Driver Licence

- Visit <https://www.drivercentral.io/chowmain-ltd/> and find the product/driver you want to purchase a licence for
- Click on **Add to Cart**

ADD TO CART

- Now click the shopping cart icon (top right) and click **View cart**





- Confirm that your order is correct and click on **Proceed to checkout**

Proceed to checkout

- Choose your payment option, provide the relevant details and click **Place order**

**Checkout**

  
**Paypal**  
Paypal, or Credit Card...

  
**Credit Card**  
Visa, Mastercard, etc...

☐ Select this check box to accept the [Terms and Conditions](#)  
☐ [Subscribe to our newsletter](#)

**Place order ( \$190.00 )**

6. You will now be at a page where you can see your purchased licence

License Name	License Key	Project Assigned	Action
[Redacted]			<a href="#">Assign to Project</a>

7. From here assign the licence to the project we created or if you did not follow that step create a new project

## License Assignment for 221

### Assign License to Existing Project

Select Existing Project:

New Project (enter project name below) ▼

**Or...**

**Create a new project**

Enter New Project Name

Enter email for Installer Notifi

Are you sure you want to do this?

Assign License to Project?

## Developer Information



Copyright © 2024 Chowmain Ltd. <http://www.chowmainsoft.com>

All information contained herein is, and remains the property of Chowmain Ltd and its suppliers, if any. The intellectual and technical concepts contained herein are proprietary to Chowmain Ltd and its suppliers and may be covered by U.S. and Foreign Patents, patents in process, and are protected by trade secret or copyright law. Dissemination of this information or reproduction of this material is strictly forbidden unless prior written permission is obtained from Chowmain Ltd.

Information stated in this document is current as of July 2020 and may change. For latest information please visit <http://www.chowmainsoft.com>

# Support

## Ticket / Live Chat Support

We provide ticket based support and live chat support for those who can't contact us via phone. Click the button below to visit our online helpdesk.

Support Centre	Hours of Operation	URL
American Support Desk	8:30AM – 4:30PM Mountain Time	<a href="https://help.drivercentral.io/">https://help.drivercentral.io/</a>

## Phone Support

Support Center	Hours of Operation	Phone Number
Australian Support Desk	6:30AM – 5:30PM Australian Eastern Time	+61 3 9028 6999

## Driver Documentation

All of our drivers come with detailed instructions on how to install and configure the driver for use in different projects. Please refer to the documentation included with the driver you downloaded, or [contact us](#) if you are unable to locate the documentation for your driver.

# CHANGELOG

## **Version 2024.7.29 - 29 July 2024**

- Modernise Backend
- Add Improved Troubleshooting and Submit Diagnostics support
- Upgrade Communication Stack

## **Version 1.0.3 - 20 March 2024**

- More aggressive SHA1 fixes.

## **Version 1.0.2 - 10 January 2024**

- Fixed issue with SHA1 function.

## **Version 1.0.1 - 24 January 2022**

- Fixed issue with feedback on AC 3 and AC 4

## **Version 1.0.0 - 25 August 2021**

- Initial Release