

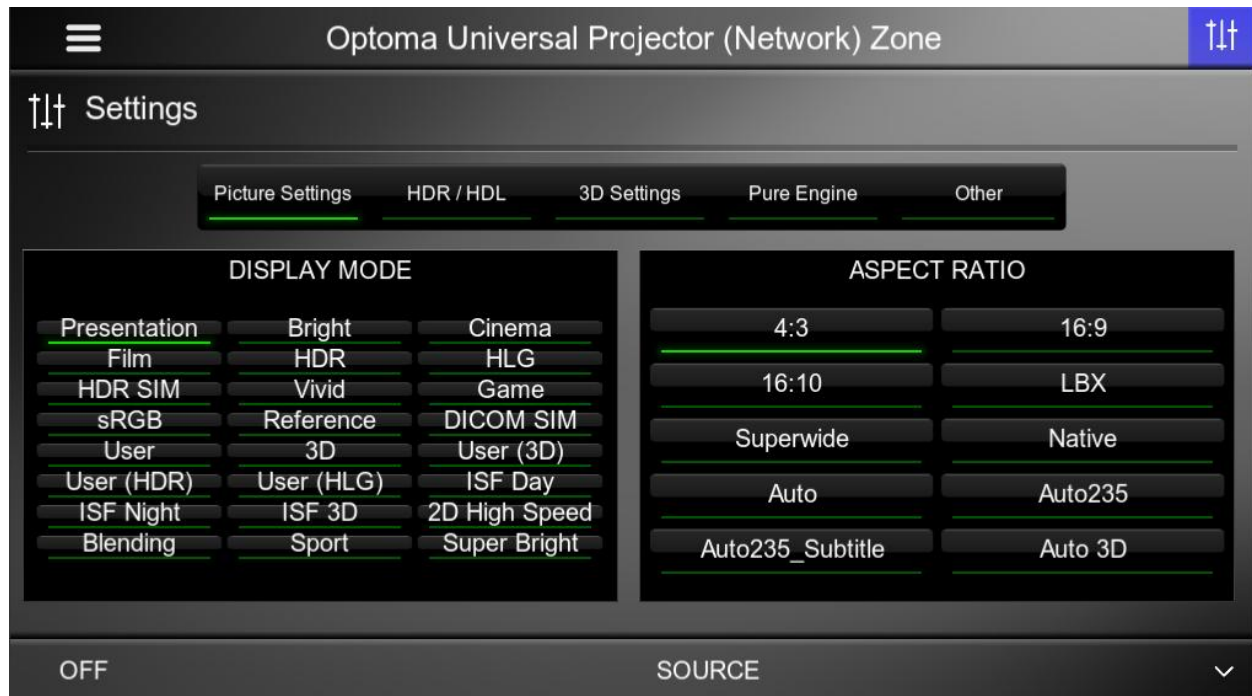
Integration Note

Manufacturer:	Optoma
Model Number(s):	<ul style="list-style-type: none"> All models apart from CinemaX
g! Core Module Version:	g!8.4.10
Driver Developer:	Chowmain Software & Apps
Document Revision Date:	Aug 19, 2021

Overview & Supported Features

Optoma provides a universal API for their range of projectors for both IP and RS232 based controls.

The Chowmain Optoma universal projector driver for ELAN provides seamless integration of all Optoma projectors (apart from the Cinema X line) via this API and allows you to control all the standard features you would expect with a projector and more.



Features

- Bi-directional control and feedback
- Both RS232 and IP based integration
- Lamp hour feedback
- Audio Controls (Volume Up, Volume Down and Mute)
- Power management
- Source selection
 - HDMI 1
 - HDMI 2
 - HDMI 3
 - S-Video
 - Component
 - Video
 - DVI-A
 - DVI-D
 - VGA 1
 - VGA 2
 - USB Display
 - Network Display
 - BNC
 - HDBaseT
 - Display Port
 - 3G-SDI
 - Wireless
 - Multimedia
- Events
 - Standby Mode
 - Warming Up

- Cooling Down
- Out of Range
- Light Source Fail (LED Fail)
- Thermal Switch Error
- Fan Lock
- Over Temperature
- Light Source Hours Running Out
- Format Board Power On Fail
- Color Wheel Unexpected Stock
- Over Temperature
- Options (note these are one-way commands)
 - 12V Trigger
 - 3D Mode
 - 3D-2D
 - 2D-3D
 - 3D Format
 - 3D Invert Sync
 - Aspect Ratio
 - Display Mode
 - Enable HDR / HLG
 - HDR Picture Mode
 - HLG Picture Mode
 - Extreme Black
 - Dynamic Black
 - Brightness Mode
 - Pure Engine Ultra Detail Mode
 - Pure Engine Pure Contrast Mode
 - Pure Engine Pure Color Mode

- Pure Engine Pure Motion Mode
- USB Power
- AV Mute
- Freeze
- Image AI
- PC Mode
- Super Wide
- Lens Memory
- Lens Shutter

Do you offer showroom discounts?

We offer dealers a free showroom licence for demonstration and educational purposes. See link below for T&C's and signup procedure.

[Chowmain Dealer Showroom FAQ](#)

I want to try this driver out before buying it?

All Chowmain drivers for ELAN come with a 90 day trial. This is activated once you add the driver to the project (internet required). No additional steps are necessary.

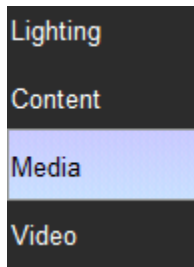
Any feature not specifically noted as supported should be assumed to be unsupported.
--

g! Configuration

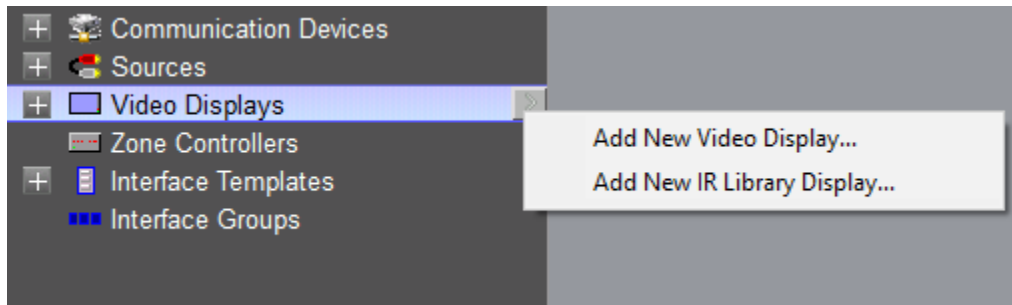
The driver requires a valid licence for use. Licences can be purchased from Chowmain's distributor [driverCentral](#). Customers can also trial the driver out for 90 days prior to licence purchase. Dealers who have showrooms can demonstrate the driver for free via the Chowmain Dealer Showroom Licence. You can apply for this licence via the [Chowmain website](#). Please follow the steps below. If you encounter any issues please submit a ticket via the driverCentral website.

Installation Process

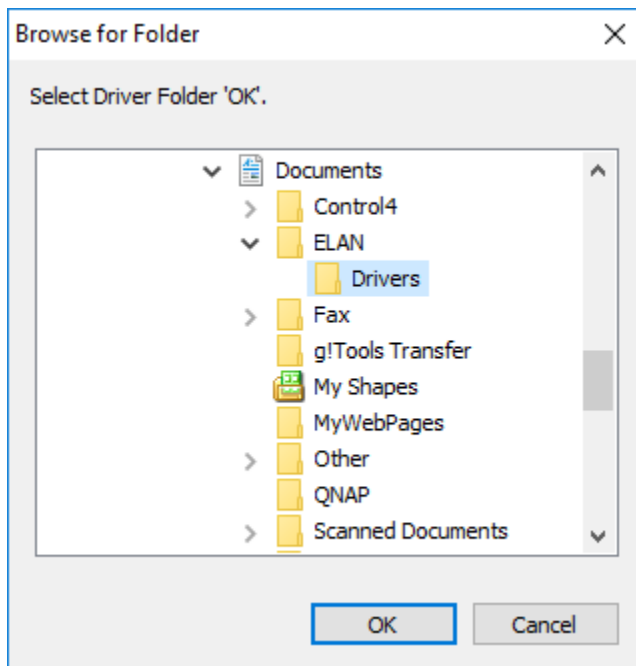
1. Download the latest version of the driver from our distributor [driverCentral](#).
2. Extract the file to your preferred ELAN driver storage location.
3. In configurator click on the Media tab



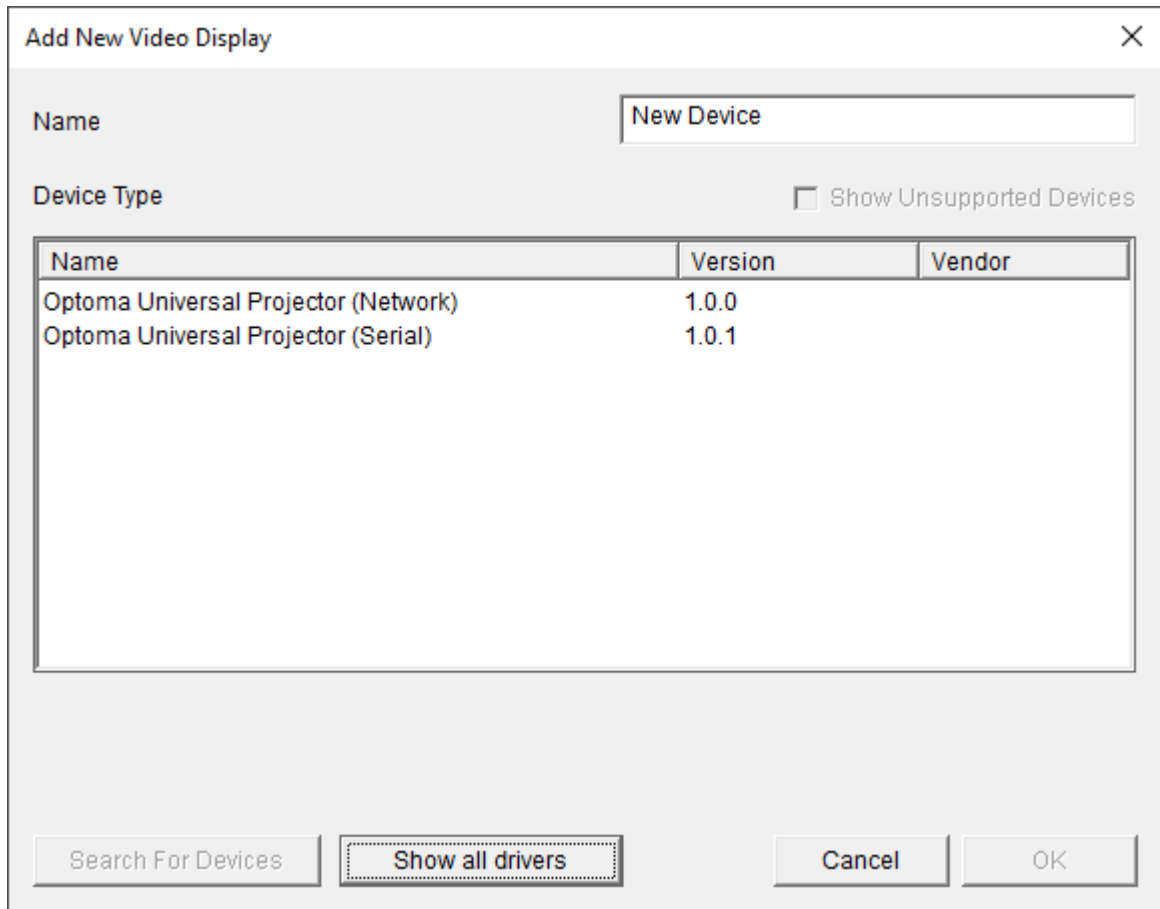
4. Click on the arrow next to Video Displays
5. Click on Add New Video Display



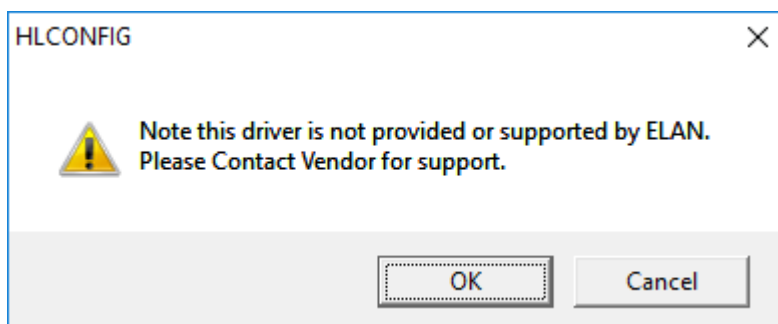
6. Click on the Search Folder button
7. Select your driver folder and press ok




8. Select the Optoma Universal Projector driver for your control type.



9. Configurator will warn you that the driver is not provided or supported by Elan. Click on OK.



10. Highlight the Optoma Universal Projector driver with the  symbol next to it.
11. The driver will advise you that you have 90 days to test the driver out. If you have purchased an activation key please type it in here then click on Apply.

Activation Key	
Activation Status	TRIAL - 48 HOURS REMAINING

12. Note that if you have typed in a valid activation key your status will change to ACTIVATED (you need to click off of the driver onto something else and back again to see the changes to the status).

Activation Status	ACTIVATED
-------------------	-----------

13. Enter the IP Address of the Optoma projector. Note that the port number should be left as the default.

IP Address	172 . 16 . 16 . 196
------------	---------------------

14. You can adjust the power on and power off delays. These delays will pause commands in the queue after a power on and power off command. Good for switching inputs when it is warming up and powering it back on after cooling down.

Power on Delay (Seconds)	10
Power off Delay (Seconds)	10

15. Click on each Page Layout and modify to delete options that you do not need for the projector (eg if the projector does not support that option or if you do not want the end user to mess with that particular option).
16. Expand on your Optoma Driver
17. For each input. Click on the input you want to configure
18. Assign the source as the source device.

19. Congratulations you have successfully setup the Optoma driver for ELAN.

g! CONFIGURATION DETAILS

The following table provides settings used in Configurator when connecting to Android TV devices. Please refer to the Configurator Reference Guide for more details.

Devices	Variable Name	Setting	Comments
Video Display (Optoma Universal Projector)	Name	<User Defined>	
	System #	<Auto Detect>	
	Driver Version	<Auto Detect>	
	Driver Vendor	Chowmain Software & Apps	
	Device Type	Optoma Universal Projector (Network or Serial)	
	Activation Key	<User Defined> This is the driverCentral activation Key	See Note 1
	Activation Status	<Auto Detect> This provides the licence status feedback	See Note 1
	Connection Status	<Auto Detect> This is the connection status for IP drivers	
	Current Power	<Auto Detect> This is the current power state of the projector	
	Current Input	<Auto Detect> This is the current input of the projector	
	Current Lamp Hours	<Auto Detect> This is the current lamp hours of the projector	
	Power on Delay	<User Defined> This is the amount of time the driver should wait after the projector after it sends a	

	(Seconds)	power on command before sending further commands	
	Power off Delay (Seconds)	<User Defined> This is the amount of time the driver should wait after the projector after it sends a power off command before sending further commands	
	IP Address	<User Defined> This is the IP address of the projector. Note that this is only available for the Network version of the driver	See Note 2

Notes:

1. The driver requires a valid licence for use. Licences can be purchased from the driverCentral website. All of the licences are site licences. This means that you can use as many instances of the driver as you want in a single system with the one licence. The driver also comes with a built in 90 day trial. The driver will provide feedback as to the state of the licence in the Activation Status field.
2. This is the IP Address of the projector. Please make sure that it is on a static IP address or reservation. Change of IP address will result in loss of control.

COMMON MISTAKES

1. Cinema X projector line is not supported as it does not have IP or RS232 based control at all.
2. IP Address needs to be on a static IP address or IP reservation
3. Telnet protocol must be enabled on the projector
4. Eco standby power must be disabled

ELAN DEVELOPER PARTNER INFORMATION

This ELAN driver was written and supported by:



<http://www.chowmainsoft.com>