

KNX Generic Monitor for Control4



Release Notes

Manufacturer: Janus Technology

Current Version: 014

Compatible Interfaces: T3 Touch Panel

Introduction

KNX Utility Generic Monitor enables Control4 to access KNX data. It is designed to be used in conjunction with the Control4 KNX Routing Gateway.

One instance of this driver is to be used for monitoring a data-type (eg gas usage, CO2 concentration etc)

Each instance of the driver supports CURRENT_VALUE and TOTAL_CONSUMPTION fields. These should be configured in driver properties according to the type of data monitored.

eg

Gas usage - this would use both TOTAL_CONSUMPTION and CURRENT_VALUE (instantaneous usage)

CO2 concentration - this would only use CURRENT_VALUE (TOTAL_CONSUMPTION is irrelevant)

It is designed to be used with the BMS Monitor from Janus, enabling visualisation of North Generic Monitor variables within Control4.

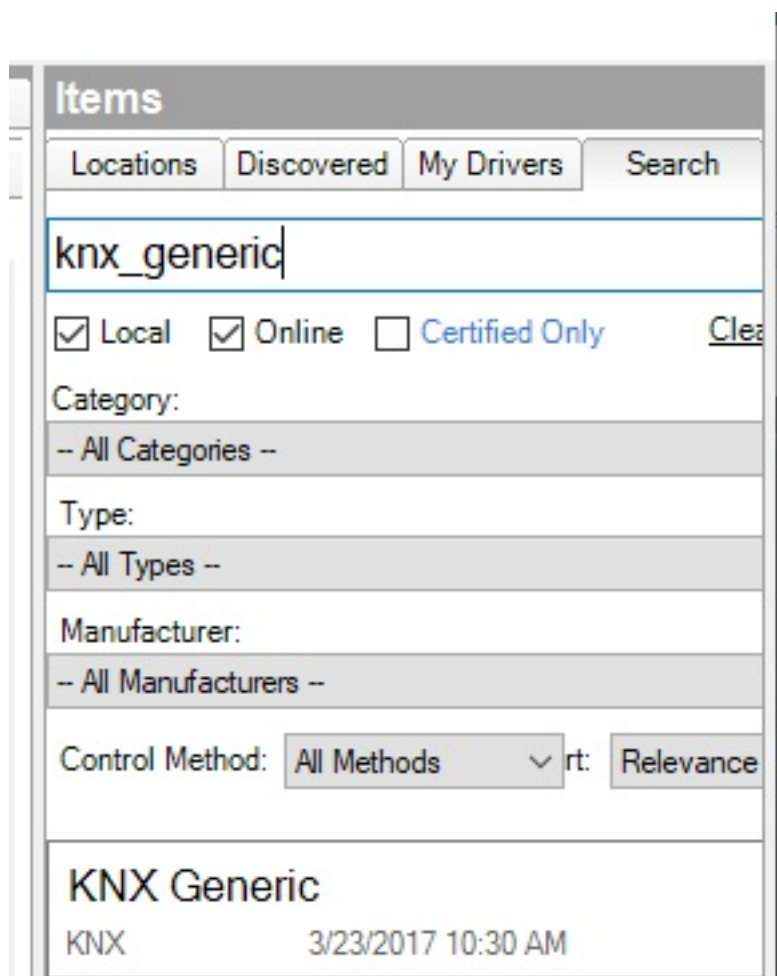
It is recommended that this driver is used on systems running OS3.1 or later.

Installation

One driver file is included in the release package.

`knx-generic-monitor.c4z`

Copy this file from the zip package to your Control4 driver location (by default this is Documents\Control4\Drivers). Open Composer and choose the Search tab from the Items pane.

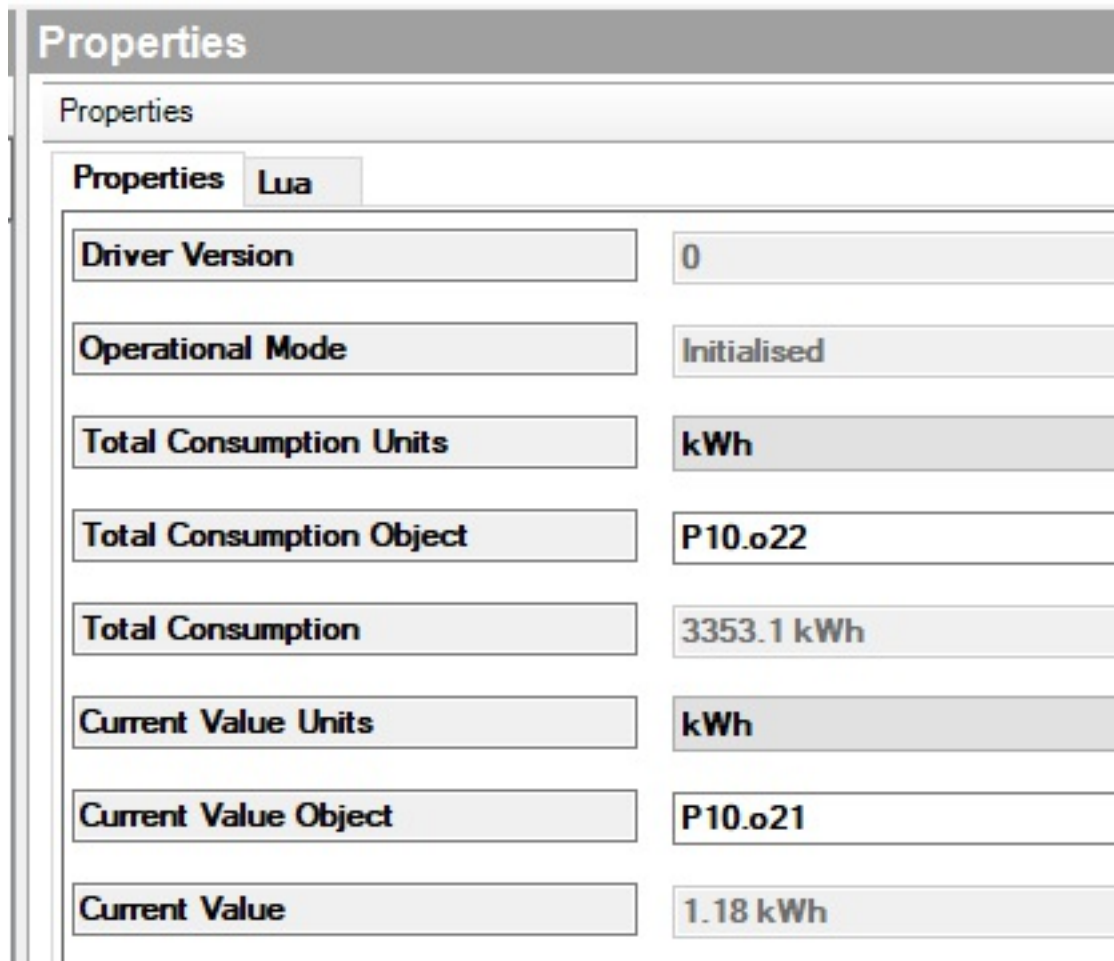


Add the driver entitled "KNX Generic Monitor" into your project. If needed, you can add multiple copies of the driver for monitoring different meters.

Configuration

Properties

In the System Design view, select the KNX Utility Meter driver to view the properties available for configuration.



Properties	
Driver Version	0
Operational Mode	Initialised
Total Consumption Units	kWh
Total Consumption Object	P10.o22
Total Consumption	3353.1 kWh
Current Value Units	kWh
Current Value Object	P10.o21
Current Value	1.18 kWh

Each instance of the driver allows 2 group addresses on the KNX bus to be monitored

- Total Consumption - effectively the meter reading, indicating total cumulative consumption
- Current usage (flow or power) - the current instantaneous flow rate (gas / water) or power (electric)

Enter the appropriate group address and then select the DPT type from the dropdown selection box

Current Value Units	kWh
Current Value Object	None
Current Value	°C
Debug Mode	°F
Debug Subsystems	%
Debug Level	m/s
	Pa
	ppm
	mV
	V
	mA
	A
	W
	kWh
	l/h
	m3/h

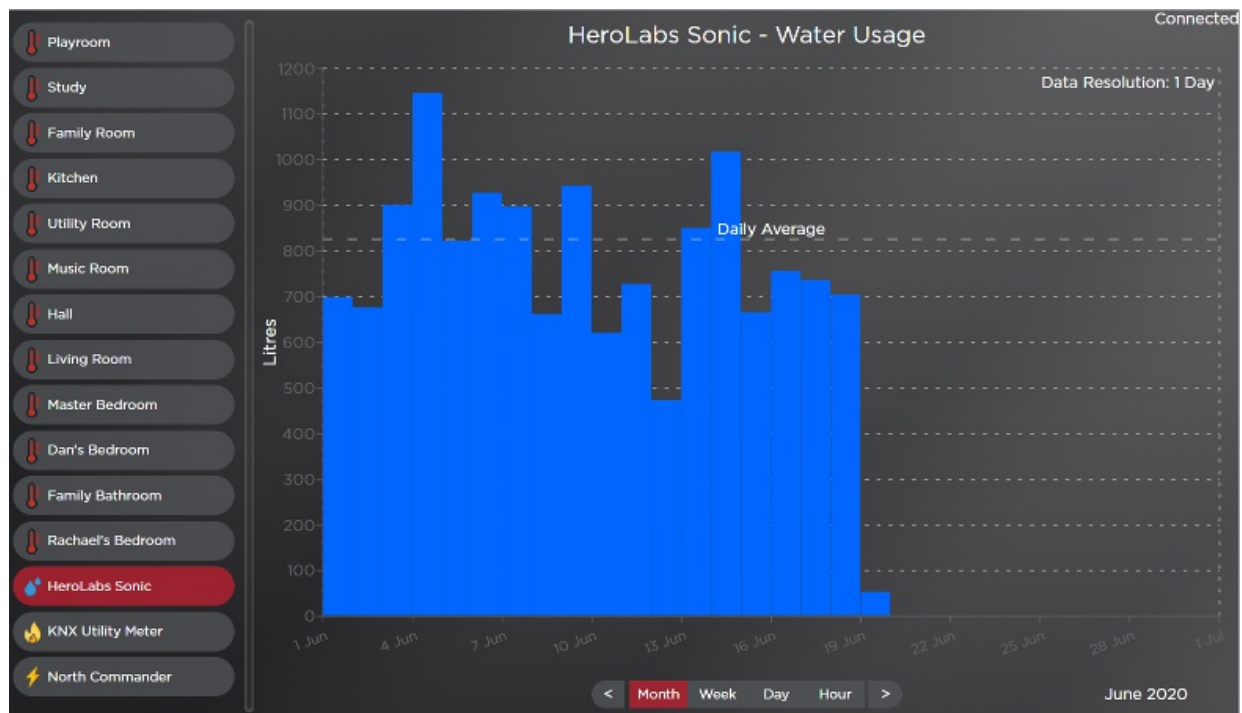
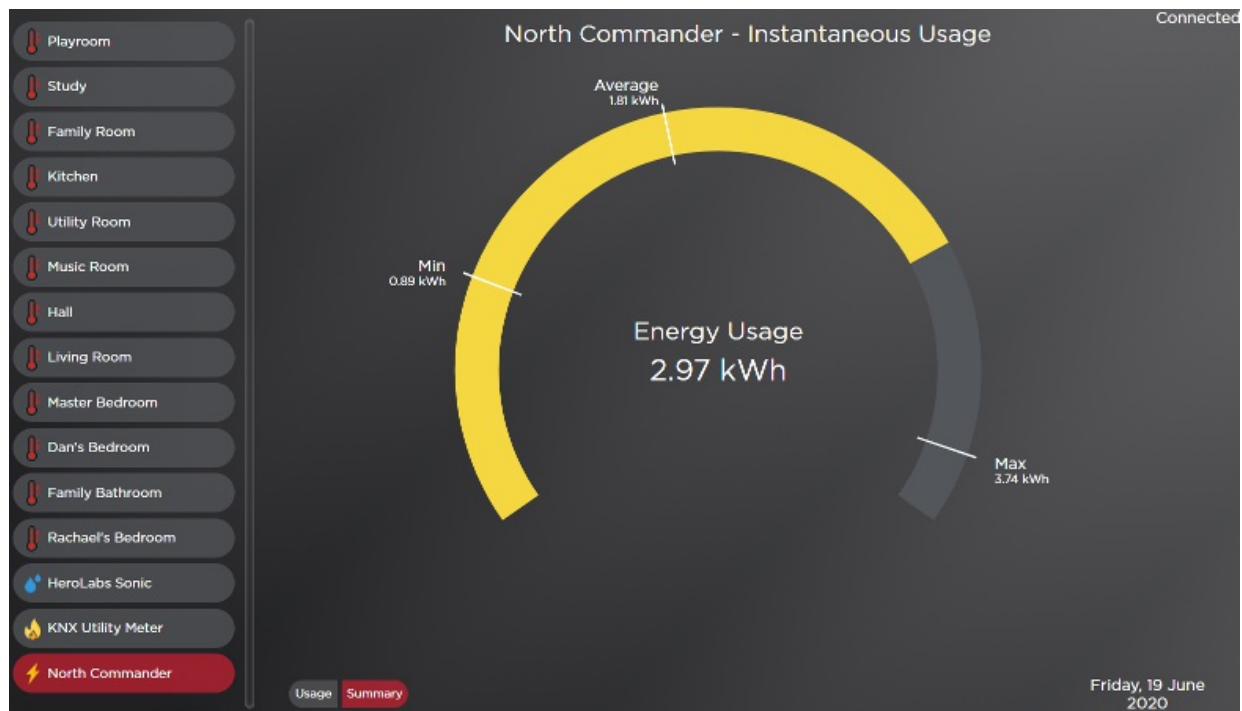
For Current Value, there is an additional property named 'Interpolation Type'. This is used to control how the data is viewed within BMS Monitor

- Scatter - useful for measured temperature, wind speed etc, where a straight line is drawn between datapoints to estimate intermediary values
- Staircase - useful for setpoints, where the value stays constant until it receives an update

BMS Monitor

The KNX Generic Monitor is designed to be used in conjunction with the BMS Monitor for visualising metering data.

Please refer to the BMS Monitor driver for instruction for setting that up - all that is required is to select the KNX Utility meter as a monitored device. Once this is done, the BMS Monitor then tracks all changes in the metering values and visualises them - sample screens are shown below



FAQ

I would like a new datapoint to be monitored

If you want to monitor a new KNX datapoint that is not currently supported, please contact us at <http://www.janustechology.co.uk/support>, and we will be happy to look into adding support for the new functionality.

Troubleshooting

If you encounter any issues with the driver, please contact us at <http://www.janustechnology.co.uk/support>, and we will be happy to assist however needed.