

## Integration Note

Manufacturer:	<b>Escea / Stoke</b>
Model Number(s):	<p><b>Escea</b></p> <ul style="list-style-type: none"> <li>• DL850</li> <li>• DX1000</li> <li>• DX1500</li> <li>• AF700</li> <li>• AF960</li> <li>• DF700</li> <li>• DF960</li> <li>• DF990</li> <li>• DS1150</li> <li>• DS1400</li> <li>• DS1650</li> <li>• DS1900</li> </ul> <p><b>Stoke models</b></p> <ul style="list-style-type: none"> <li>• KS1150 850</li> <li>• KS1150 400 Peninsula</li> <li>• KS1150 400 Corner (Left or right hand)</li> <li>• KS1460</li> <li>• KS1460 Peninsula</li> <li>• KS1460 Corner (Left or right hand)</li> </ul>
g! Core Module Version:	<b>g!8.2</b>
Driver Developer:	<b>Chowmain Software &amp; Apps</b>
Document Revision Date:	November 9, 2020

## Overview & Supported Features

Escea/Stoke is a well-established industry leader in the design, manufacture and export of leading edge gas fireplaces and outdoor wood burners. Their fireplaces are renowned for their modern, minimalist styling, heating efficiency and ease of use.

These fireplaces are available for purchase in New Zealand, Australia, UK and Europe.

**THE FOLLOWING OPTIONS ARE SUPPORTED BY THE ESCEA DRIVER:**

- Room Temperature Feedback.
- Setpoint Control / Feedback
- On / Off Control / Feedback
- Fan Boost Control / Feedback
- Flame Effect Control

**THE FOLLOWING OPTIONS ARE NOT SUPPORTED BY THE ESCEA DRIVER:**

- Automatic discovery of the fireplace. You will need to set a static ip address or reserved ip address in the DHCP server.

Any feature not specifically noted as supported should be assumed to be unsupported.

## Escea Fireplace Configuration

Each fireplace will need to be installed, connected to the Ethernet network first and configured using the Escea Remote smart phone application prior to driver setup.

## g! Configuration

The driver requires a valid licence for use. Licences can be purchased from Chowmain's distributor [driverCentral](#). Customers can also trial the driver out for 90 days prior to licence purchase. Dealers who have showrooms can demonstrate the driver for free via the Chowmain Dealer Showroom Licence. You can apply for this licence via the [Chowmain website](#). Please follow the steps below. If you encounter any issues please submit a ticket via the [driverCentral](#) website.

## Installation Process

Please follow the Escea Fireplace Configuration steps above before proceeding with the g! Configuration steps below.

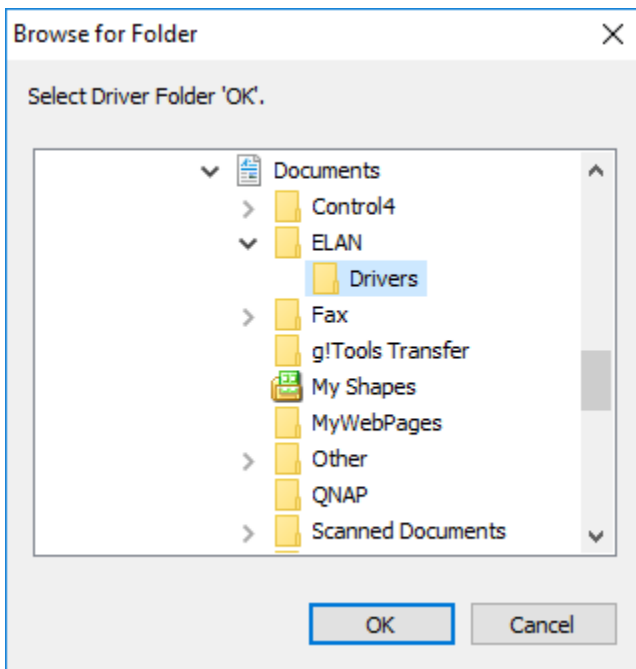
1. Download the latest version of the driver from our distributor [driverCentral](#).
2. Extract the file to your preferred ELAN driver storage location.
3. In configurator click on the Climate tab



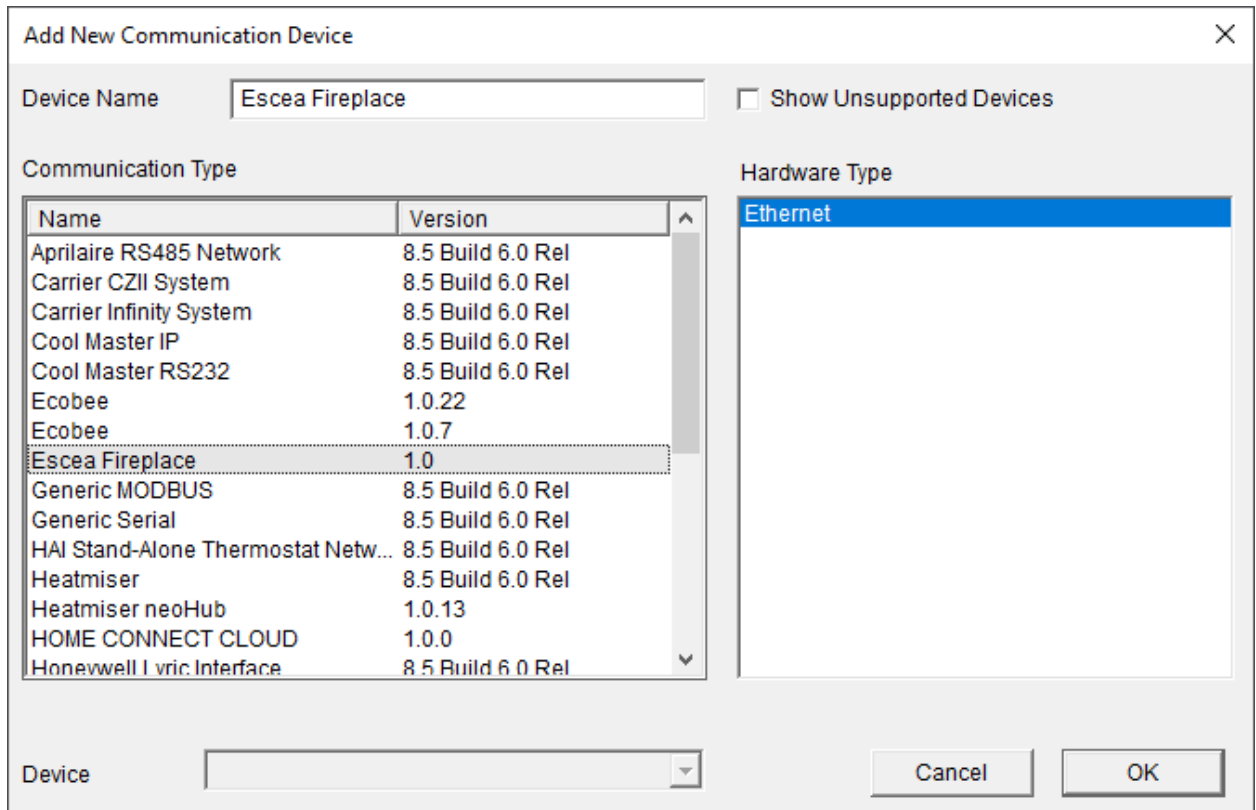
4. Under Global Options select the unit type to be either Celsius, no decimal places
5. Click on the arrow next to Communication Devices
6. Click on Add New Communication Device



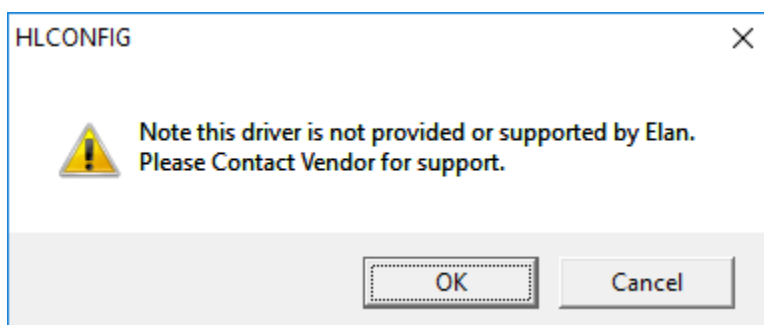
7. Click on the Search Folder button
8. Select your driver folder and press ok



- Select the IntesisBox driver and press ok



- Configurator will warn you that the driver is not provided or supported by Elan. Click on OK.



11. Click on the arrow next to Heating/Cooling Units

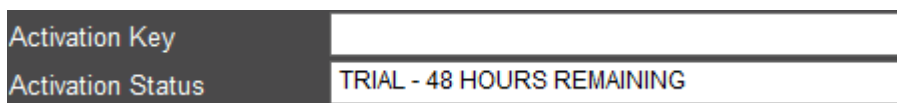
12. Click on Add New Device



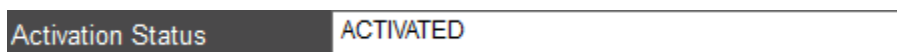
13. Select Generic HVAC Unit and click on OK.

14. Click on the Escea Fireplace Communications Device.

15. The driver will advise you that you have 90 days to test the driver out. If you have purchased an activation key please type it in here then click on Apply and lastly Activate Licence.



16. Note that if you have typed in a valid activation key your status will change to ACTIVATED (you need to click off of the driver onto something else and back again to see the changes to the status).



17. Enter the IP Address of the fireplace and click on Apply

18. You should now be able to control the Escea Fireplace from any ELAN user interface. If your HVAC system has flame effect please continue add the flame effect commands to an event map or button in a custom page.

19. Congratulations you have successfully setup the IntesisBox driver for ELAN

## g! CONFIGURATION DETAILS

The following table provides settings used in Configurator when connecting to Escea Fireplace devices. Please refer to the Configurator Reference Guide for more details.

Devices	Variable Name	Setting	Comments
Communications Devices (Escea Fireplace)	Name	<User Defined>	
	System #	<Auto Detect>	
	Driver Version	<Auto Detect>	
	Driver Vendor	Chowmain Software & Apps	
	Device Type	Escea Fireplace	
	Activation Key	<User Defined> This is the driverCentral activation Key	See Note 1
	Activation Status	<Auto Detect> This provides the licence status feedback	See Note 1
	IP Address	<User Definted>	
	Port	<Auto Detect>	

### Notes:

1. The driver requires a valid licence for use. Licences can be purchased from the [driverCentral](#) website. All of the licences are site licences. This means that you can use as many instances of the driver as you want in a single system with the one licence. The driver also comes with a built in 90 day trial. The driver will provide feedback as to the state of the licence in the Activation Status field.

## COMMON MISTAKES

1. You have not setup the Escea Fireplace to a static ip address or reserved ip address
2. You do not have a supported fireplace.

## ELAN DEVELOPER PARTNER INFORMATION

This ELAN driver was written and supported by:



<http://www.chowmainsoft.com>

