

Security Webview for Control4



Release Notes

Manufacturer: Janus Technology

Current Version: 111

Introduction

The Security Webview driver can be thought of as a security visualiser, allowing you to see an overview of the state of your home with a graphical and easy-to-understand overview.

How you use the driver is up to you - you could configure it with motion sensors to give instant data to where motion is detected anywhere in the house; you could add window contact sensors or gate sensors to show where you might have left a window open at a glance, or you could even use the system as an 'alarm' visualiser, by configuring it with glass break detectors, smoke detectors and carbon monoxide detectors. The choice is yours!

The webview in this driver uses the concept of Areas (floors etc.), Groups and Zones (sensor drivers, interrogated from your Control4 project). Up to 5 areas can be created, with each area allowing for any desired number of groups. Each discovered zone can be assigned to a group, with each group able to hold 1 or more zones.

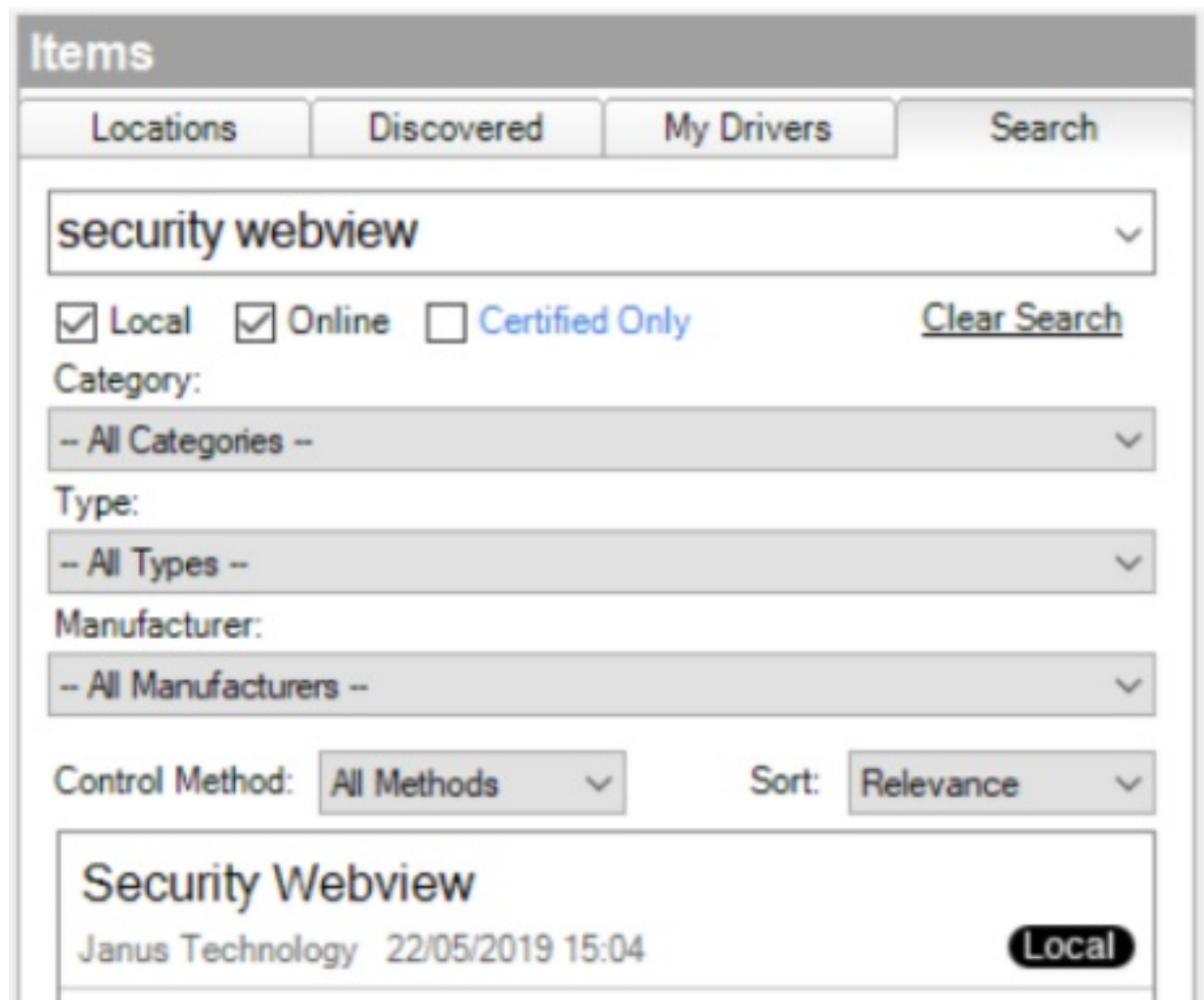
Described in the Setup section, you can add a custom image (e.g. floor plan) for each area, and manipulate the shape and size of each group to however you desire.

Installation

One driver file is included in the release package.

janus_security_webview_dc.c4z

Copy this file from the zip package to your Control4 driver location (by default this is Documents\Control4\Drivers). Open Composer and choose the Search tab from the Items pane.



Add one instance of the driver entitled "Security Webview" into your project.

This driver will automatically scan your project for any compatible drivers.

If you have a configured Raspberry Pi, you can add instances of the driver entitled "Security Webview Remote", a driver which connects to the Pi, allowing you to show the Security interface on much more than just the T3 touch panels.

Configuration

Properties

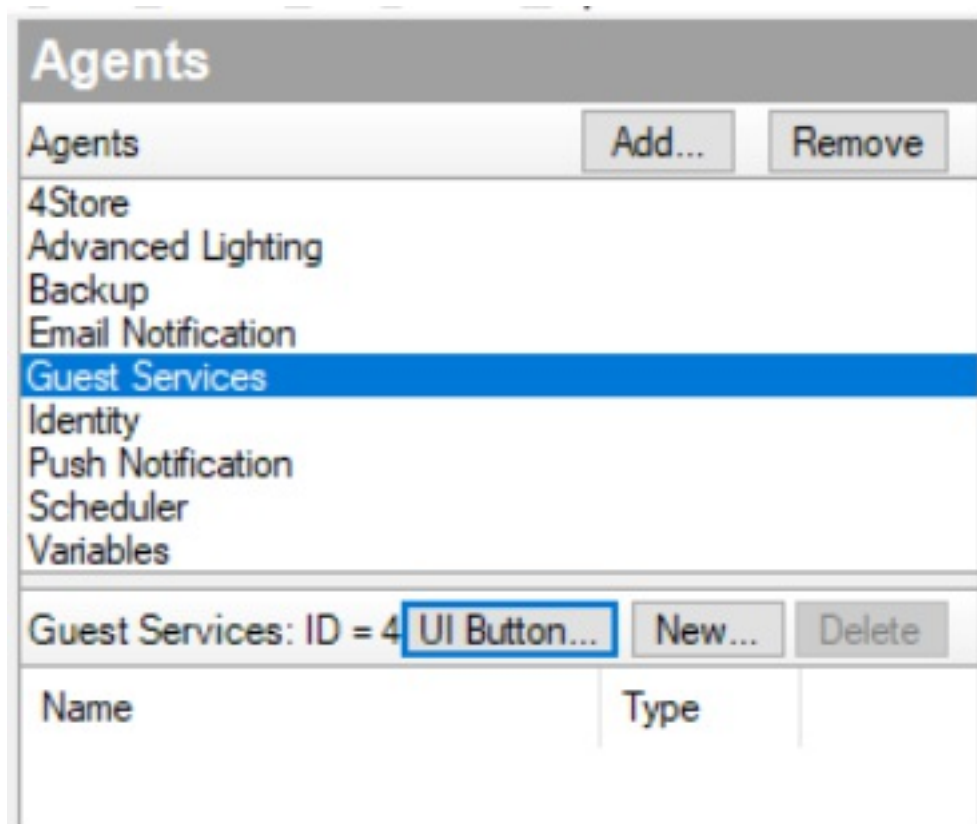
In the System Design view, select the Security Webview driver. The following properties will be available.

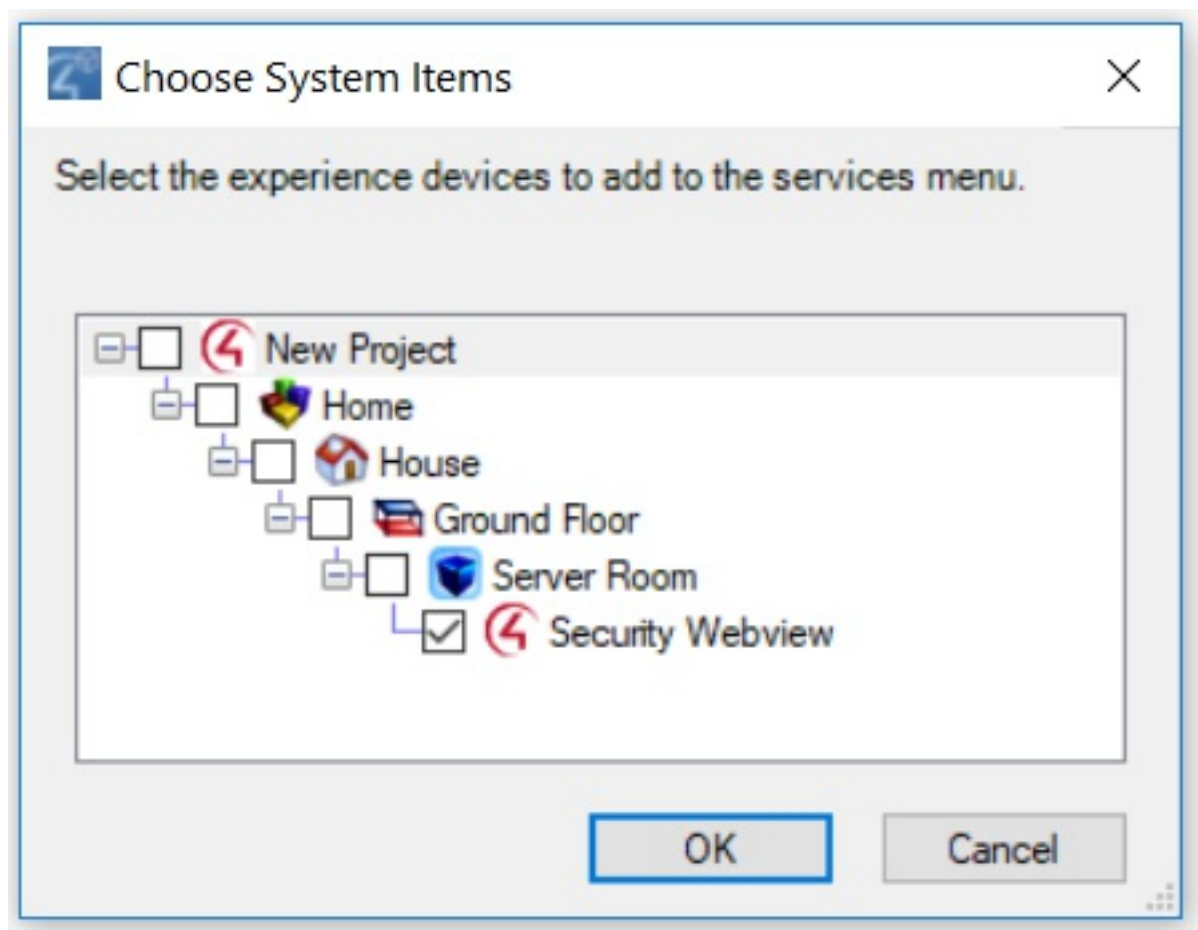
- **Driver Version** - Reports the release version of the driver.
- **Operational Mode** - Reports the current driver status
- **Cloud Status** - Visual output of the Driver Central activation status of the driver
- **Automatic Updates** - Enables automatic updates of this driver via Driver Central
- **Debug Mode** - For support use only.
- **Debug Subsystems** - For support use only.
- **Debug Level** - For support use only.

Setting up the webview

OS2

To set up your project for use with a WebView, in the **System Design** view, select the **Agents** tab. If the agent **Guest Services** does not exist, click on **Add** and then on **Guest Services**. Select **Guest Services** then press **UI Button**. Select the Security Webview driver and press **OK**.

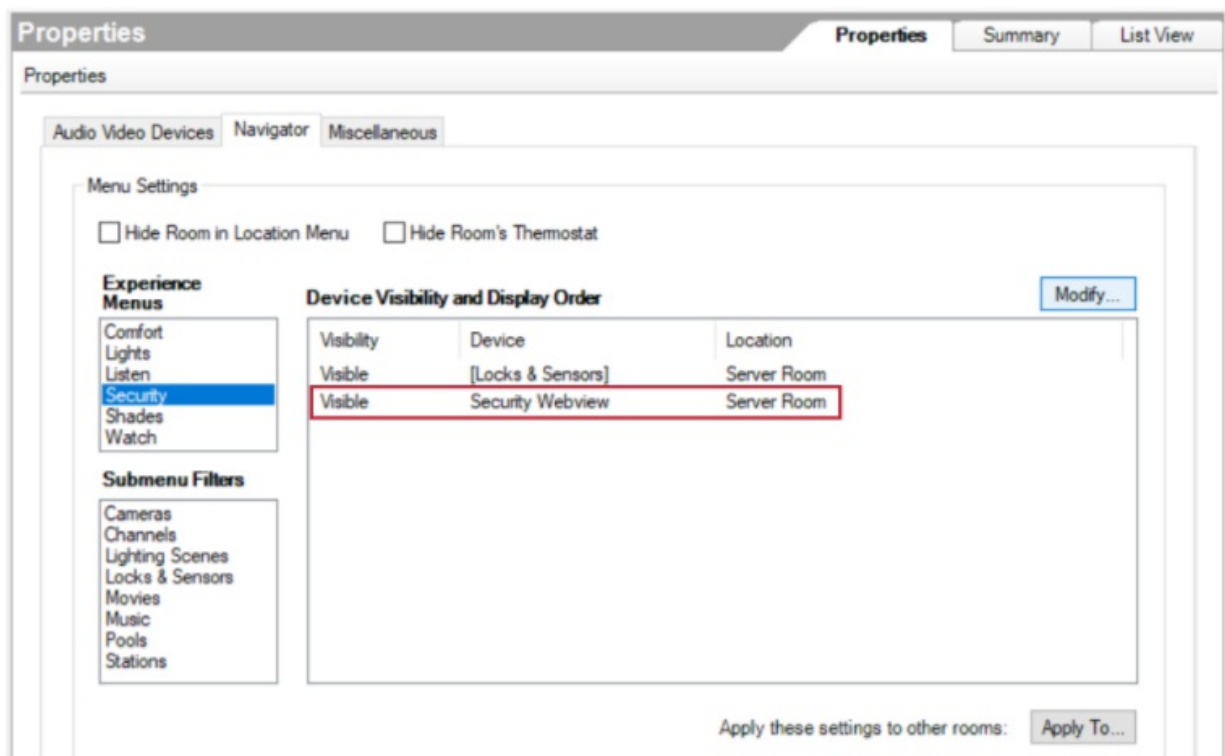




Security Webview will now be accessible from the **Agents** menu.

OS3

To set where you can access Security Webview, in the **System Design** view, click on a room and then on the **Navigator** tab.



Press the experience menu you wish to place the webview in, and press **Modify** (not that custom UI buttons such as this cannot be added to all experience menus due to limitations set by Control4). Highlight *Security Webview* and press **Show** then **OK**.

Once you have added the UI button, ensure that you refresh the navigators in your project in order for the UI button to appear in the Control4 GUI.

Licencing

Ensure you have the DriverCentral Cloud driver in your project, and that a valid project token is entered. On the trial version, this driver will be fully operational for 7 days before requiring a license to be purchased. Licenses are available from <https://drivercentral.io/platforms/control4-drivers/security-systems/security-webview>

The driver will scan your project for any compatible drivers on start-up. It will also rescan your project whenever a new driver is added.

Setup

Before this driver can undergo normal operation, some setup is required. This setup cannot be performed from a touch panel, and must be done from a web browser. Ensuring your Computer is on the same network as your C4 controller, note down the IP address of

the controller (displayed in the bottom-right in Composer). Navigate to http://controller-ip/driver/janus_security_webview_dc/dist, and press the **Setup** button in the top-right of the screen.

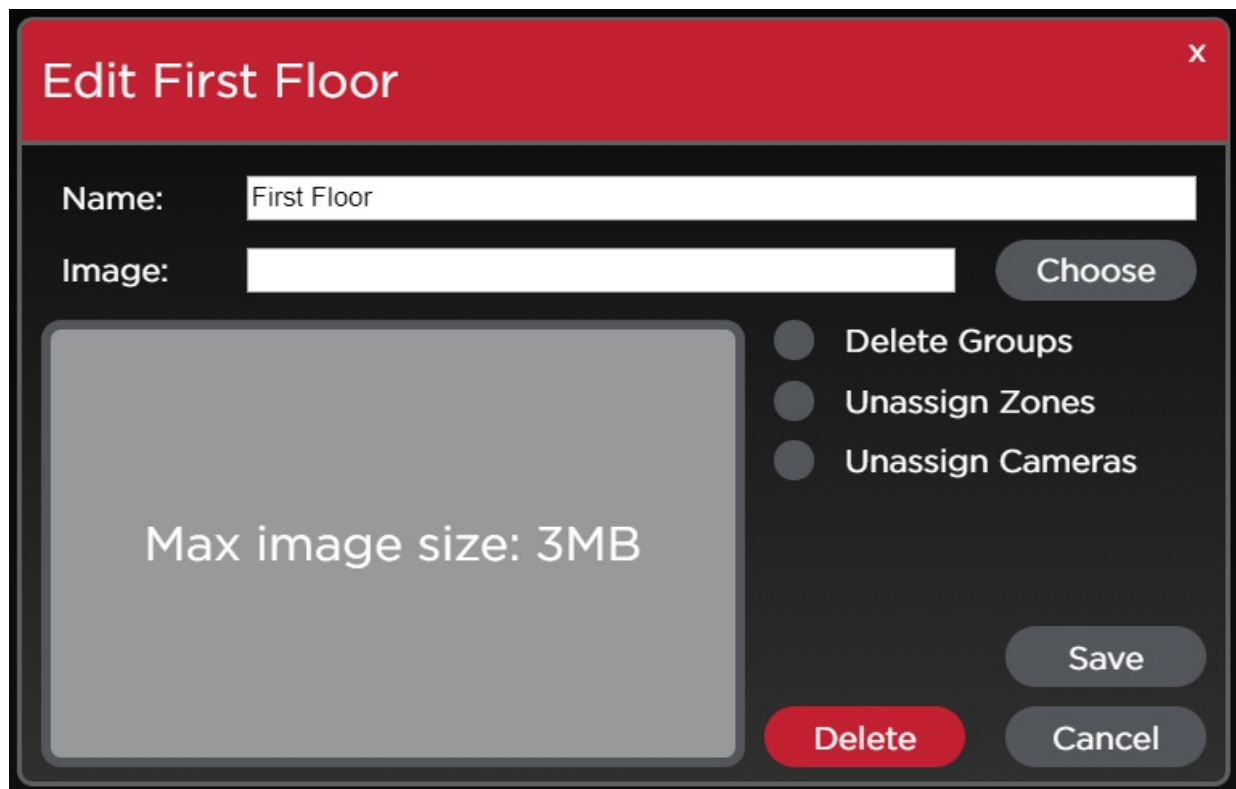


Areas

To add a new area, click on the add button, next to the existing zones (**1b**). Note: you can only have a maximum of 5 areas.

To edit an existing area, simply select the area you wish to edit, and click on the edit button (**1a**).

When adding or editing an area, the following interface is available:



You can define the name of this area, and choose an image to be displayed in the background (usually a floor plan). When choosing an image, keep in mind that the image will be stretched to occupy the entire space of the touch panel, which has dimensions 962x551 (roughly 16:9). Using an image of roughly that aspect ratio will minimise any potential distortion.

Supported image file formats are **.png**, **.jpg** and **.jpeg**, with a maximum allowed file size of 3MB. It is not recommended to go above 1MB however, due to the noticeable performance decrease on initial load that this entails.

There are 3 checkbox options to aid in quickly re-organising the interface;

- **Delete Groups** - Deletes all groups that are defined within this area
- **Un-assign Zones** - Removes all zones assigned to groups within this area
- **Un-assign Cameras** - Removes all cameras assigned to groups within this area

Groups

Select the area you wish to define groups for, and look to the **Setup Groups** sidebar option (**2**). You have several options to choose from.

Note that once created, the shape type cannot currently be changed.

The example interface shows four polygons (**4a**, **4b**, **4c**, **6**) and one rectangle (**5**) present on an interface.

Circle Tool

With this tool selected, click anywhere on the screen once to start drawing a circle, and click a second time to finish the shape.

Rectangle Tool

With this tool selected, click anywhere on the screen once to start drawing a rectangle, and click a second time to finish the shape.

Polygon Tool

When you add a polygon, you will enter an edit mode, where you click on the screen to create an n-sided polygon. To finish the shape creation, double click on the screen.

Select Tool

With this tool selected, you can click on any group to select it.

- Once selected, circular and rectangular-shaped groups can be moved, rotated and manipulated in size.
- For polygon shapes, each corner becomes a draggable point which you can use to reshape the polygon however you see fit (**4c**). You can add a new point by double-clicking on the line between two existing points, or delete an existing point by double-clicking it.
- Note - If you delete enough points on a polygon so that only 2 or less remain, the shape will be automatically deleted after a short timer

Manage Tool

With this tool selected, you can click on any group to open a menu where you can rename, delete, or change the shape type of the chosen group. If you delete the group, any assigned zones or cameras will be automatically unassigned

Zones

The **Unassigned Zones** sidebar section (**3a**) displays all the sensor drivers that were discovered in the C4 project. If there are any sensors that are not relevant to this webview, drag those sensors to the **Hidden Zones** section (**3c**) to separate them from the rest.

To assign a zone to a group, simply drag a zone on top of the desired group.

When you have a group selected, an additional sidebar section **Selected Group Zones** will appear (**3b**), showing the zones that are assigned to that group. You can un-assign any sensor in this list by dragging it to the **Unassigned Zones** section.

You can reorder the zones in the **Selected Group Zones** list by dragging a zone to a new position within the same list.

Groups (**4a**, **4b**, **4c**) have zones assigned to them, which are all closed. Group (**5**) has zones assigned to it, with one or more of those zones open. Group (**6**) has no zones assigned to it.

Cameras

Allowing you to assign any camera driver in your project to a group - coming soon in a future update!

Normal Operation

OS v2.9.x/v2.10.x - From the Control4 GUI home page, navigate to **Services** and then **Security Webview**.

OS v3.x - From the Control4 GUI home page, navigate to the experience menu you placed Security Webview under, and then press **Security Webview**. Note that by pressing and holding the Security Webview icon, you can add it as a favourite to the room you are in.

Each device can be configured to open onto a different default (favourite) area. You can set this by pressing & holding the desired area tab for ~1s when that area is selected.

For the Security Webview Remote driver, the remote commands LEFT, RIGHT and INFO switch between the area tabs for just the interface running on the Pi. INFO cycles between all the areas which have a raised alarm, while LEFT and RIGHT simply switch to the previous and next area.

Driver Actions

In the **System Design** view, select **Actions**. This driver has following actions;

Scan Project for Compatible Zones

If you have a compatible sensor in your project that isn't showing up on the Security Webview interface, press this action to force the driver to re-scan your project for devices.

Rebuild WebView

If the IP range your processor is on changes, the driver will no longer be able to connect to the WebView – simply press this action to safely rebuild the Security Webview interface on the new IP range. No data will be lost.

Clear Touchscreen Cache

If one of your T3 touch screens is not displayed the updated Security Webview interface following a driver upgrade, you can use this action to force any touch screen in your project to clear its cache.

Display Config

This action will print the current configuration of your security webview system to the Lua output, indicating the zones that are assigned to each group, and the room in which each group is in. It will also report a list of unassigned and hidden zones.

Cleanup Project

USE WITH CARE - This is a powerful action with multiple choices of increasing severity; you can

- **Unassign Zones from Groups**
- **Delete All Groups** - All groups will be deleted (and all zones will be unassigned)
- **Delete All Images** - only the images you associated with each Area will be deleted. All other configuration will remain unchanged
- **Reset Project** - this will reset your *Security Webview* driver to its initial state following installation

FAQ

What do I need to install?

For each zone you wish to display in Security, a sensor endpoint driver is required. These can be found in Composer from the **System Design** view by going to *My Drivers*, and scrolling down to the section labelled **Sensors**. Any driver within this folder will be able to be shown in Security.

The contact sensor connection for these sensor drivers should be connected to whatever system you are using for control.

If you have a driver installed that you believe should be supported, please contact us at <http://www.janustechology.co.uk/support>, and we will be happy to look in to adding support for this driver!

You may choose to install the companion driver, *Security Webview Remote*, allowing you to view the interface on much more than just the T3 touch panels

What interfaces does it work on?

Security Webview appears under services on the control4 interface (OS v2.9.x/v2.10.x, and OS3 **only**), and where you have placed it via navigator. Currently this is only available on T3 screens, and not on iOS / Android Apps.

Through the Security Webview Remote driver, the interface is loaded on a raspberry pi, which you could connect to a switch / directly to a TV to view the interface on a number of different screens!

Can I place Security Webview within the security experience menu?

Yes! You can customise where Security Webview is accessible from the Control4 interface via the room navigator in composer (described in the Configuration section)

For systems running OS v3.x, you can also favourite Security Webview to the room by pressing and holding on the Security Webview UI icon from a T3 touch panel.

Do you offer free demo license for dealer showroom?

Yes - we offer a free showroom demo license via DriverCentral.

My Touch Screen is not showing any new features following a driver update

T3 touch screens sometimes fail to use the updated driver and instead display a cached version. To force the touch screen to clear its cache and display the new interface, go to *Actions*, click on *Clear Touchscreen Cache*, and select the touch screen from which you are having issues.

Troubleshooting

The property Operational Mode reports the current operational status of the driver.

Possible operational states

- **Initialising** - The driver is initialising
- **Ready** - The WebView has been created and is ready to be opened from the Control4 GUI
- **Connected** - At least one webview client is connected - the driver is operational
- **Unlicensed** - The license for this driver is not valid

If you encounter any issues with the driver, please contact us at
<http://www.janustechnology.co.uk/support>, and we will be happy to assist however needed.