

Integration Note

Manufacturer:	Hikvision NVR
Model Number(s):	I-Series 4/8/16 Channel (Custom Firmware)
g! Core Module Version:	8.3
Driver Developer:	Simplux
Document Revision Date:	26/02/2020

Overview & Supported Features

This driver currently only works well for Live Preview changes. However, it still has navigation control in GUI, but it's currently not smooth. Hikvision is aware of this and are currently optimizing the customized firmware to make it friendlier along with the way the Onscreen NVR GUI is navigated.

This is an IP driver to control the remote control functions of the Hikvision NVR I-Series Models. This will only work with a custom firmware which needs to be updated on the NVR depending on the model. Firmware update is provided in the driver folder.

This driver works as a source device in the Elan Configurator.

Note: Do not use the version 4 firmware from the Hikvision website. This version does not support the Hikvision ISAPI. Please use the provided custom firmware from Hikvision which is included in the folder.

THE FOLLOWING OPTIONS ARE SUPPORTED BY THIS DRIVER:

- Basic Remote control functions with navigation keys
- Access to the Menu Screen
- Direct Playback Button
- Play/Pause/Stop Controls
- Changing NVR live view screens (1,4,6,8,9,16,25,32,64)
- Recalling a direct camera live view by pressing the camera number

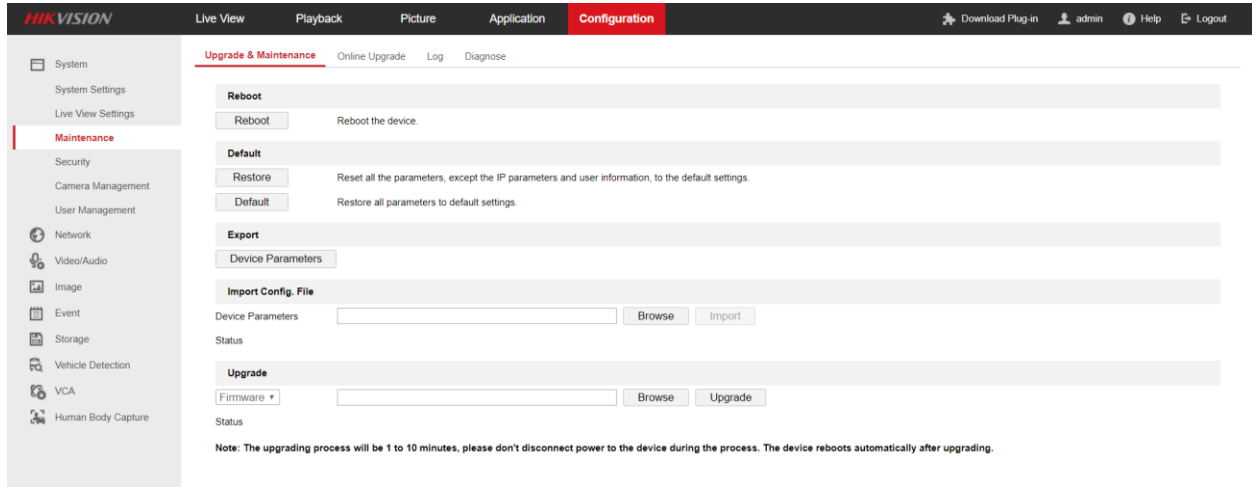
THE FOLLOWING FEATURES ARE NOT SUPPORTED BY THIS DRIVER:

- No events status from the cameras are provided as Feedback
- No feedback is provided from the NVR

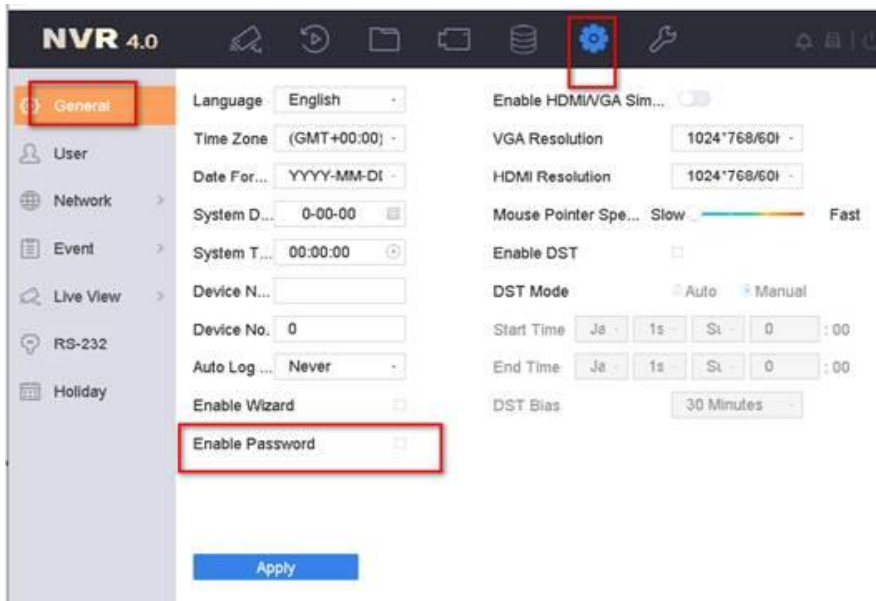
Any feature not specifically noted as supported should be assumed to be unsupported.

Hikvision NVR Configuration

1. Using the Hikvision SADP software, find the IP address of the Hikvision NVR and change this to a static IP address
2. Upgrade the Hikvision Firmware by going under Configuration > System > Maintenance



3. Once the upgrade is done the NVR can be controlled through Elan.
4. If you require the NVR to be controlled directly without having to input their passwords, then do the following using the NVR GUI display. Go to Settings > General > Untick Enable Password.

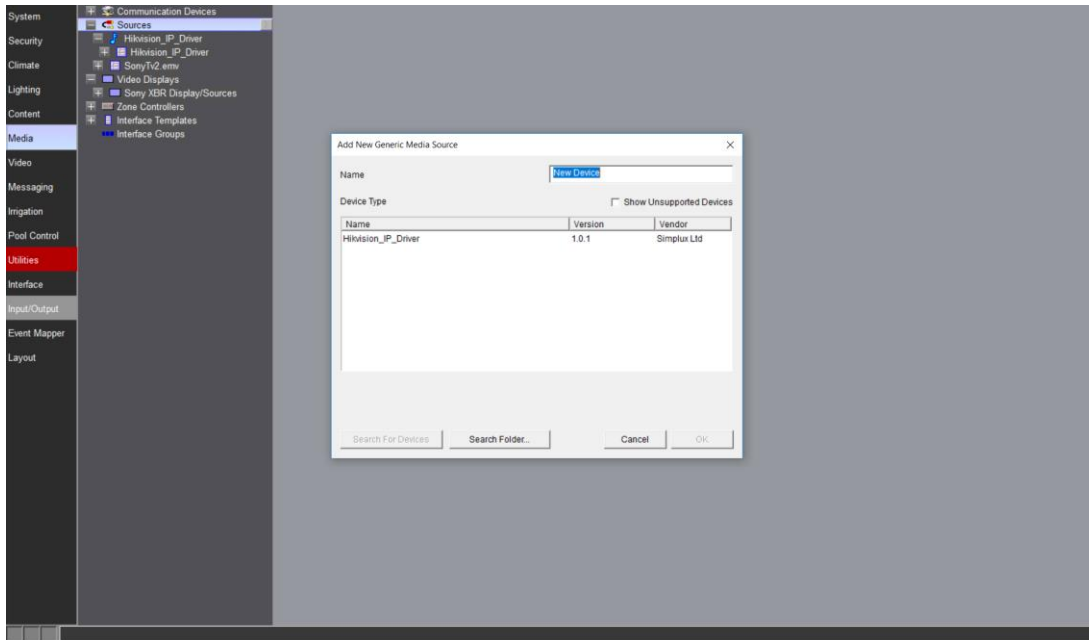


Elan Configuration

It is recommended that you follow the below installation process in order to ensure you are running the latest version of the driver.

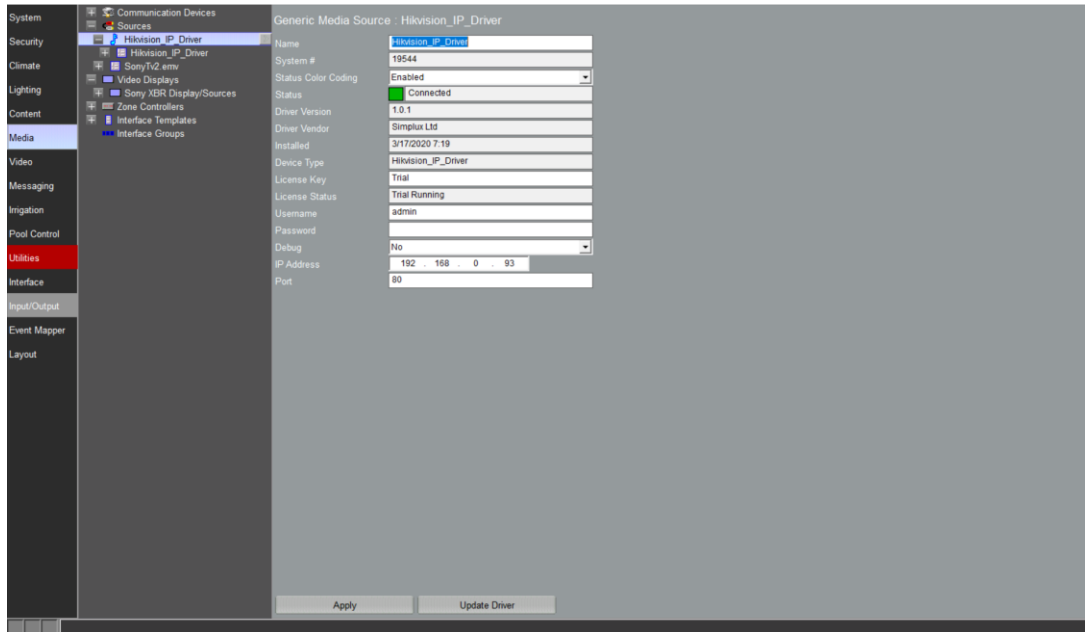
In the configurator under the Media Tab, then Sources

1. Right-click on Sources
2. Choose Add New Generic Media Source



3. From the Add New Generic Media Source pop-up, choose Search Folder
4. Select the driver from the folder its saved in and Click OK

- Under License Key, type the purchased key to activate the license. Alternatively type "TRIAL" for a free one month trial period to test the driver. Then type the Username, Password, IP Address and Port Number of the NVR



- Click Apply

How to Navigate the Hikvision NVR

It is recommended that you follow the below navigation process in order to ensure you experience a fluent control of the NVR. Due to the limitation of the GUI on Hikvision and the way the API is provided a step by step process must be followed to control the NVR.

View Mode on the Elan Interface



Number Buttons will also bring the cameras directly.

To bring the Main Menu Tab

Press this after selecting the Main Menu button to start controlling the tabs on the top.

This is for live view of the direct camera (This will only work when View 1 is selected)

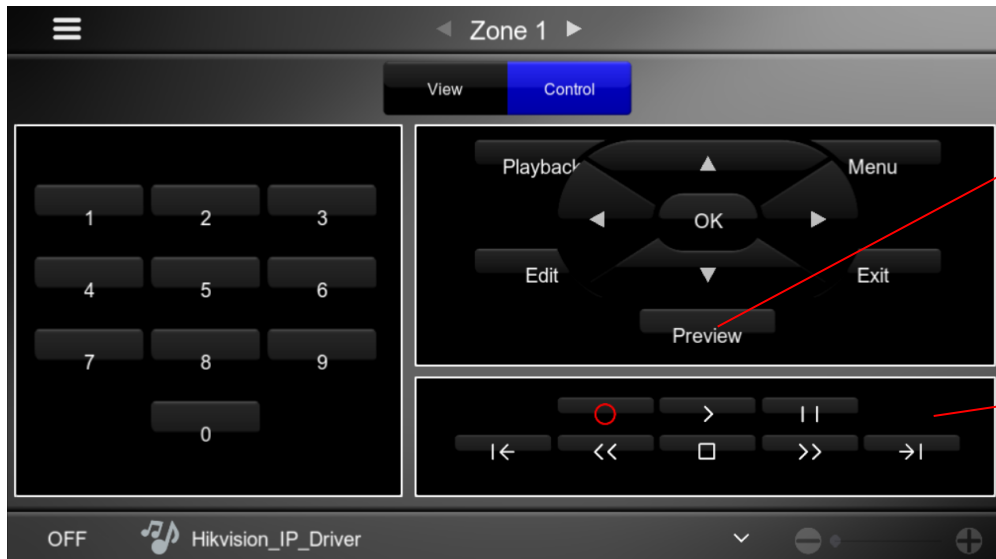
This is to bring the different Live View formats.

This is to Edit Controls

This will go to the Playback Menu

Navigation Keys. Can also be used for Play/Pause/Forward.

View Mode on the Elan Interface



Preview – used to change the viewing windows during Liveview and Playback

Play/Pause/Forward/Skip/Stop/Record Buttons

Control in Live View

- Use the View Modes to have multiple screens of cameras.
- Select View 1, then the direct camera number to see each camera in full screen.
- Press the Menu button to show the main menu screen tabs at the top. Then press Exit to start navigating the tabs.
- Press Playback to go directly to playback menu.
- Press Record – this will Start/Stop recording on all channels.

Steps for Control in Playback

- Press Playback to go directly to playback menu.
- If only one camera is required, press the camera number to select the camera and it will start to play automatically on the current day.
- Then press the preview button to view more than one camera.
- Then press playback to switch between the play/pause control menu and the date selection menu. When you press playback it switches between the Play/Pause controls tab and the date selection tab.
- Press stop to end playback.
- Press Exit to navigate the top tabs on the main menu to go back to live view.

	License Status	<Auto Detect>	Driver Status Feedback
	Username	<User Defined> (Default admin)	Type the username of the NVR. Default is admin
	Password	<User Defined>	Type the Password of the NVR
	Debug	<User Defined> (Default NO)	Enable Debug to Trace Errors
	IP Address	<User Defined>	IP address of the NVR
	Port	<User Defined> (Default 80)	Port number of the NVR

COMMON MISTAKES

1. Not being able to control the play/pause buttons. If this is the case press playback once and the date selection will stop moving and the control for play/pause will become available.

ELAN DEVELOPER PARTNER INFORMATION

This ELAN driver was written and supported by:



Simplux Ltd | www.simplux.co.uk | info@simplux.co.uk