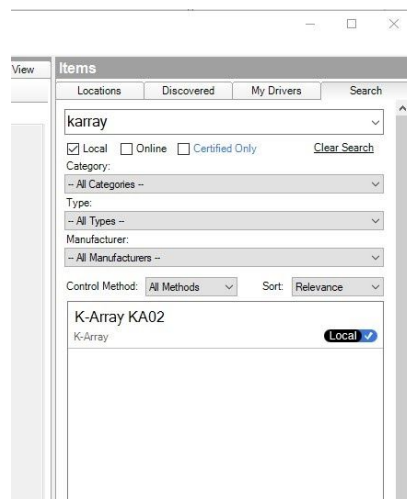


Control4 K-array Driver

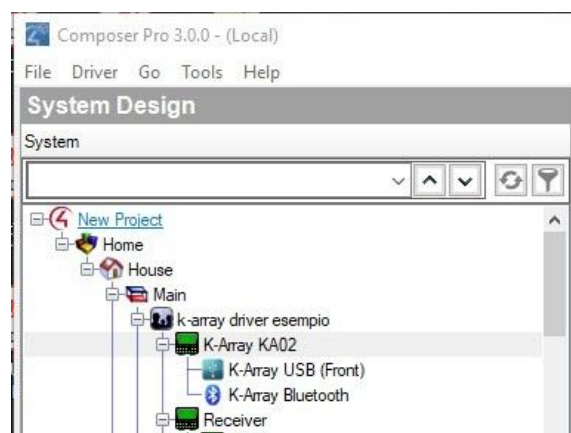
Installation



To install the driver using Control4 Composer:

1. Copy the karray-ka02.c4z file in the Documents\Control4\Drivers folder of the user used to install the software Composer Pro
2. In the Search tab of the System Design Section look for “karray”
3. double-click on the K-array KA02 driver that is shown”.

Driver’s description



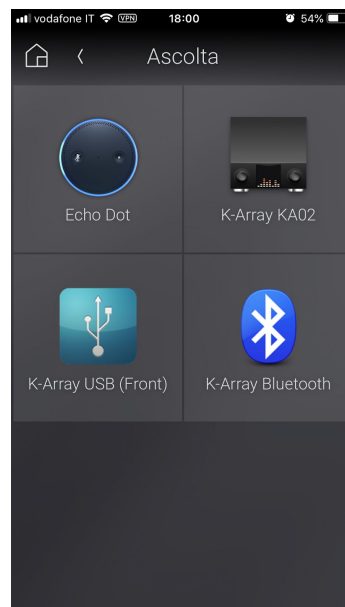
The suite of drivers is made of three parts: the main driver (gateway) and two sub drivers used to manage the USB and Bluetooth sources.

After the Driver configuration (by K-array gateway parameters, see next section of the document), it is possible to connect an audio source to the “line-in” by the section “Connections” of the Composer Pro.

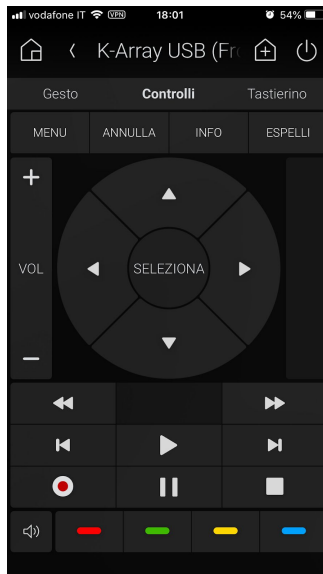
In the example below, we had connected the Amazon EcoDot source to the K-array: it will reproduce music through the K-array driver.

Control & Audio Video Connections				
K-Array KA02				
Name	Type	Connection	Input/Output	Connected To
Audio/Video Inputs				
Line In	Audio	STEREO	Input	Echo Dot->Audio Out
Optical Line In	Audio	DIGITAL_OPTICAL	Input	
Audio/Video Outputs				
Main Output	Video	SPEAKER	Output	
Main Output	Audio	SPEAKER	Output	
Room Control				
Room Selection - Main O...	RoomControl	AUDIO_SELECTION	Output	k-array driver esempio->Audio End-Point 1, k-array dri...
Room Selection - Main O...	RoomControl	AUDIO_VOLUME	Output	k-array driver esempio->Video Volume 1, k-array driver...
Room Selection - Main O...	RoomControl	VIDEO_SELECTION	Output	k-array driver esempio->Video End-Point

The driver exposes the music source in the Contorl4 Interface, in the following screenshot USB, Bluetooth, and Eco Dot.



By selecting the desired source the sub driver interface will open showing the following interface.

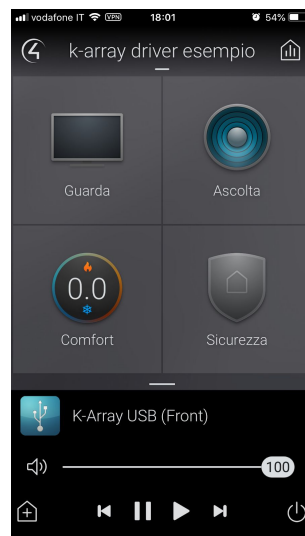


If the USB music source is selected, the available button and functionality are:

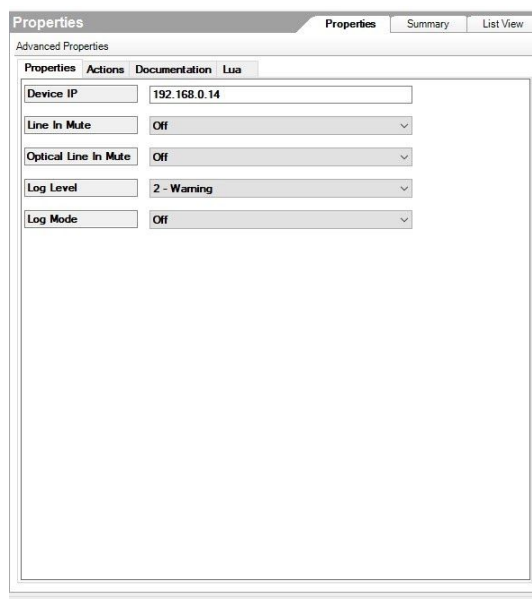
- Pause
- Stop
- Next/Previous
- Mute

If the Bluetooth source is selected the only active button is the **red one**: it enables the pairing mode on the K-array amplifier. The opening of the Bluetooth interface automatically activates the Bluetooth on the K-array amplifier; closing the Bluetooth source on the interface switch off the Bluetooth on the amplifier.

When a source is selected, it is shown on the bottom of the control4 interface like Audio sources Control4 standard behaviors. When a source is switched off (with the Off button), the K-array amplifier goes in standby mode



Properties for the K-array gateway

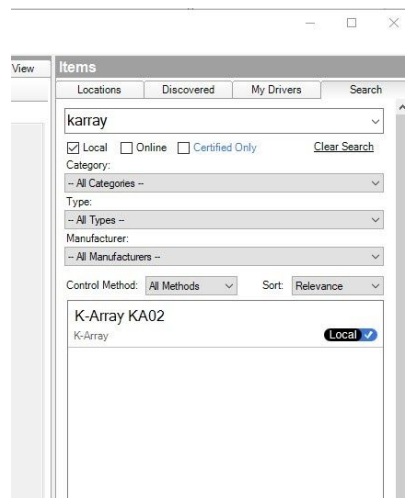


The driver exposes the following properties:

- **Device IP:** the IP address of the K-array amplifier to control
- **Line In Mute:** Select "On" to mute the analog line-in, select "Off" to unmute
- **Optical Line In Mute:** Select "On" to mute the digital line in, select "Off" to unmute
- **Log Level:** Select the level of verbosity of the driver in the Lua Console
- **Log Mode:** allow to visualize the message on the Lua Console

Driver K-array per Control4

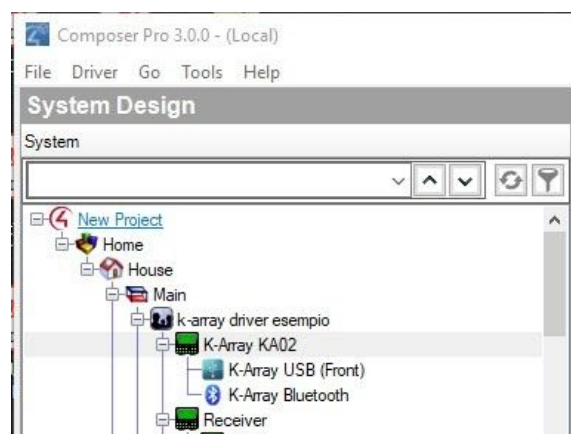
Installazione



Per installare il driver:

1. copiare il file karray-ka02.c4z nella cartella Documents\Control4\Drivers dell'utente usato per installare il software Composer Pro
2. andare nella tab Search della sezione System Design e cercare "karray"
3. doppio click sul driver K-array KA02 che apparirà nella lista filtrata

Descrizione del driver

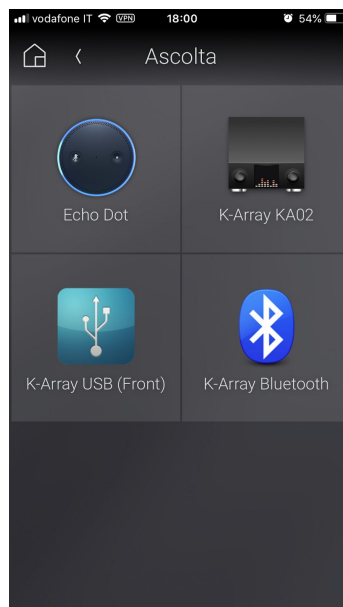


Il driver è composto da un elemento principale (gateway) e due sotto driver dedicati al controllo della sorgente USB e uno alla sorgente Bluetooth.

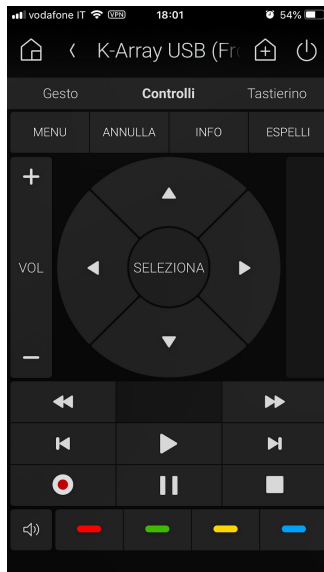
Dopo aver configurato il driver (vedi paragrafo “Parametri del gateway K-array”) è possibile collegare una fonte audio ai line in dalla sezione “Connections” di Composer Pro. Ad esempio nella schermata seguente abbiamo aggiunto come sorgente un Amazon Eco Dot che sarà quindi in grado di riprodurre musica attraverso il K-array.

Control & Audio Video Connections				
K-Array KA02				
Name	Type	Connection	Input/Output	Connected To
Audio/Video Inputs				
Line In	Audio	STEREO	Input	Echo Dot->Audio Out
Optical Line In	Audio	DIGITAL_OPTICAL	Input	
Audio/Video Outputs				
Main Output	Video	SPEAKER	Output	
Main Output	Audio	SPEAKER	Output	
Room Control				
Room Selection - Main O...	RoomControl	AUDIO_SELECTION	Output	k-array driver esempio->Audio End-Point 1, k-array dri...
Room Selection - Main O...	RoomControl	AUDIO_VOLUME	Output	k-array driver esempio->Video Volume 1, k-array driver...
Room Selection - Main O...	RoomControl	VIDEO_SELECTION	Output	k-array driver esempio->Video End-Point

Il driver mette così a disposizione nell'interfaccia di Control 4 le sorgenti disponibili (nell'esempio USB, Bluetooth e Eco Dot).



Selezionando la sorgente desiderata apparirà una schermata di controllo come in immagine seguente:



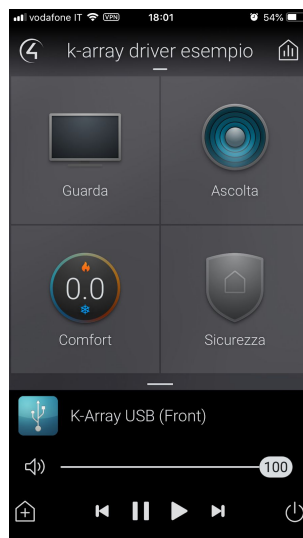
Se la sorgente selezionata è USB i pulsanti attivi sono:

- Play
- Pause
- Stop
- Next/Previous
- Mute

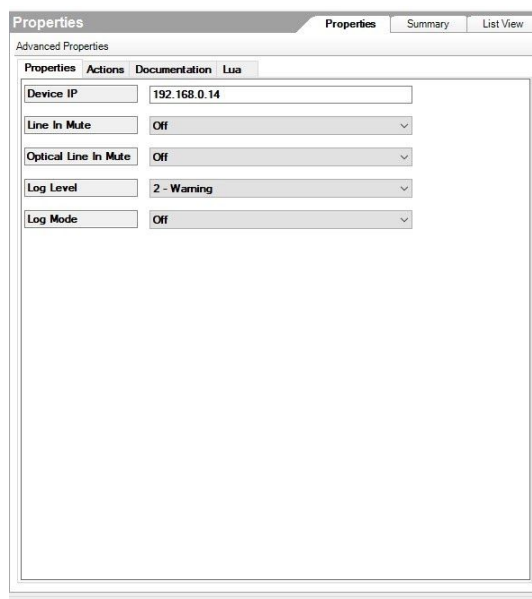
per le rispettive funzionalità.

Se la sorgente selezionata è Bluetooth invece l'unico pulsante attivo è il **rosso** che abilita il *pairing*. La selezione della sorgente bluetooth abilita automaticamente il bluetooth sul K-array. La chiusura della fonte su Control4 spegne automaticamente il bluetooth sul K-array.

Una fonte selezionata viene mostrata durante la navigazione dell'impianto di Control4 in basso come da comportamento standard. Quando viene spenta una fonte con il pulsante Off, K-array va in modalità standby.



Parametri del gateway K-array



Il driver espone le seguenti proprietà:

- **Device IP:** va indicato l'IP del dispositivo K-array da controllare
- **Line In Mute:** impostare 'On' per mettere in muto la line in analogica, 'Off' per rimuovere il mute
- **Optical Line In Mute:** impostare 'On' per mettere in muto la line in digitale, 'Off' per rimuovere il mute
- **Log Level:** definisce la quantità di messaggi da visualizzare nella tab Lua del driver
- **Log Mode:** abilita la visualizzazione dei messaggi del driver nella tab Lua