

Big Ass Fans Haiku Installation and Usage Guide



Version: 2024.7.29
Date: Monday, July 29, 2024
Authors: Alan Chow

chowmainsoft

Contents

Overview.....	4
Features.....	5
Fan Features.....	5
Light.....	5
FAQ.....	6
Which Big Ass Fan Products are supported by this driver?.....	6
What are the benefits of the V2 vs V1 driver.....	6
How come the dimmer level changes slightly when i set a level?.....	6
Which ELAN OS / Nice Home Management OS is required for this driver?.....	6
What hardware will this work on?.....	6
My Fans were working correctly in V1, however, the fans do not operate in V2.....	6
Can you give us some examples of how we could use this driver?.....	6
Do you offer any other cool drivers?.....	7
I want to try this driver out before buying it?.....	7
Setup.....	8
Requirements.....	8
Installation Process.....	8
Automatic Setup (V2 Discovery Driver).....	8
Automatic Setup (V1 / Depreciated).....	9
V1 Additional Setup.....	10
Manual Setup (V2).....	11
CONFIGURATION DETAILS.....	11
Discovery (V2).....	11
Fan V2.....	12
V1.....	13
Troubleshooting.....	15
The auto discovery process isn't finding my devices, why?.....	15
I'm still using the Haiku App.....	15
I Accidentally deleted one of my devices which I require.....	15
The various Fan devices get added, but they do not operate.....	15

Licensing.....	16
Creating a Project on Driver Central.....	16
Purchasing a Driver Licence.....	17
Developer Information.....	19
Support.....	20
Ticket / Live Chat Support.....	20
Phone Support.....	20
Driver Documentation.....	20
CHANGELOG.....	21
Version 2024.7.29 - 29-JUL-2024.....	21
Version 3.1.3 - 04-APR-2024.....	21
Version 3.1.2 - 19-SEP-2023.....	21
Version 3.1.1 - 15-SEP-2023.....	21
Version 3.1.0 - 24-AUG-2023.....	21
Version 3.0.0 - 20-JUL-2023.....	21
Version 2.9.2 - 16-JUN-2023.....	21
Version 2.9.1 - 05-JUN-2023.....	21
Version 2.0.6 - 27-APR-2021.....	22
Version 2.0.2 - 18-SEP-2018.....	22
Version 2.0.1 - 30-AUG-2018.....	22
Version 2.0.0 - 20-AUG-2018.....	22

Overview

The Chowmain Big Ass Fans Driver for Nice Home Management allows integration of Haiku and other Big Ass Fans into Nice Home Management allowing full 2 way multispeed fan and multi level lighting control over your home.

Integration into Nice Home Management allows control from a single point using Nice Home Management's touchscreens, mobile applications, keypads and handheld remote controls. On top of that it exposes control over the Haiku products in the Nice Home Management ecosystem to provide interaction from other devices in the home. From turning off your fans and lights when you arm your security system to automatically turning them on when it detects you are at home and if the temperature is at an uncomfortable level integration provides you with so many different solutions to make your lifestyle that much easier.

The Big Ass Fans V2 Driver requires Nice Home Management OS 8.8 or later.

Our new V2 driver now enables support for all IP controllable Big Ass Fans Devices and for the Big Ass Fans Mobile App

Features

- Automatically Discover and Manage Big Ass Fan Devices on your network using our new Big Ass Fans V2 Driver
- Instantaneous Feedback
- One Touch Detection of Devices
- Automatic naming of devices
- Two Way Control / Feedback
- Sleep Mode Support

Fan Features

- Control Fan Power and Speed
- Fan Occupancy Support
- Reverse/Forward Fan
- Whoosh Support
- ECO Mode

Light

- Control Light and Brightness
- Support for Light CCT Support
- UVC Support
- Light Occupancy Support

FAQ

Which Big Ass Fan Products are supported by this driver?

At this time, the following products are supported:

- Haiku (H and I Series)
- Haiku L
- Haiku Light
- i6
- es6

If its supported by the Big Ass Fans mobile app, it's probably supported by our driver.

What are the benefits of the V2 vs V1 driver

- V2 enables support for the Big Ass Fans App, a greater variety of BAF devices, realtime feedback and more functionality

How come the dimmer level changes slightly when i set a level?

Many light only have dim levels of 0-16, which may cause the level changes to vary

Which ELAN OS / Nice Home Management OS is required for this driver?

OS 8.8 or later is required for our Big Ass Fans V2 driver. For Legacy systems, V1 may still be used, but requires older firmware and supports limited hardware

What hardware will this work on?

BAF V2 should support all Big Ass Fan's devices which have been upgraded to the latest firmware using the Big Ass Fans App.

My Fans were working correctly in V1, however, the fans do not operate in V2

You must upgrade your mobile app from the original Haiku App to the new Big Ass fans app and update the firmware. V2 requires updated firmware for operation. V1 does not require updated firmware, but it does not support all of the features or hardware of V2.

Can you give us some examples of how we could use this driver?

- Integration with Nice Home Management allows you to use control the Fans and Lights from any Nice Home Management user interface including touchscreens, mobile devices, keypads and remotes.

- Program your home to automatically turn off all lights and fans when you arm the security system.
Turn on fans if the temperature is high and you have just returned home.
- Link lighting and fans to motion sensors to save energy in unoccupied rooms.
- Enable or disable auto mode (occupancy)
- Program Whoosh effects for the fans.

Do you offer any other cool drivers?

Nice Home Management is a major part of our business. We develop new drivers all the time. You can see all of our drivers on our website (<http://chowmain.software>). Sign up to our newsletter to get notified when new drivers out.

I want to try this driver out before buying it?

All Chowmain drivers for Nice Home Management comes with a 90 day trial.

Setup

Requirements

- Nice Home Management Core 8.8.600 or later is required
- This driver requires a valid licence for use. More information is available on the [Chowmain Website](#). Customers can also trial the driver for 90 days prior to licence purchase. Dealers who have showrooms can demonstrate the driver for free via the Chowmain Dealer Showroom Licence. You can apply for a showroom licence via the Chowmain website.
- Big Ass Fans Hardware. It is strongly recommended to be using the updated Big Ass Fans mobile app for control (which includes V2 compatible firmware), instead of the older Haiku driver

Installation Process

Once you have physically installed your Big Ass Fan or Light and have connected it via wifi to your network please follow the steps below.

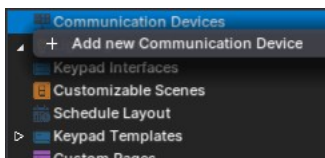
1. Download the latest version of the driver
2. Extract the file to your preferred driver storage location.
3. In configurator click on the Lighting tab



Automatic Setup (V2 Discovery Driver)

Big Ass Fans Supports Discovery for Automatic setup of devices

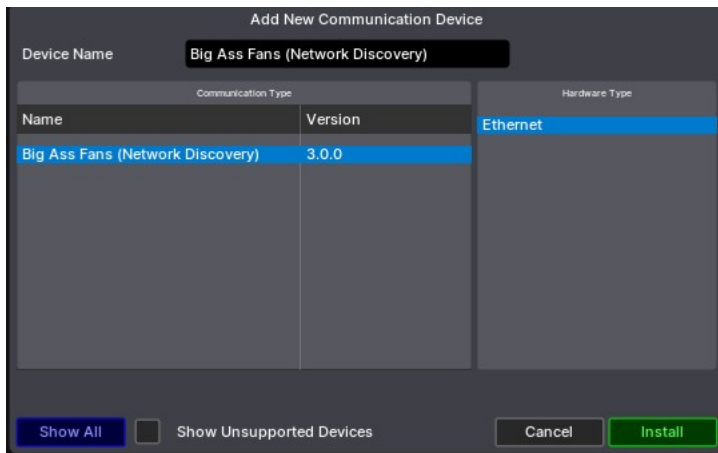
1. Right Click Communication Devices, and Add New Communication Device



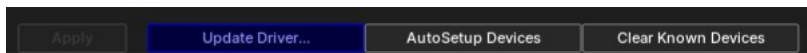
2. Press Import Button, and Select the CHOWMAIN_BigAssFans_DISCOVER.EDRVC



3. Select the Big Ass Fans (Discovery) Device, and click Install



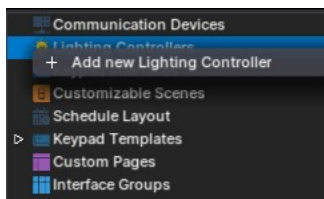
4. Wait 2 minutes for Auto discovery to take place, and press AutoSetup Devices



5. Check that all devices have been created under lighting Controllers

Automatic Setup (V1 / Deprecated)

1. Right Click Lighting Controllers, and Add New Lighting Controller



2. Press Import Button, and select LIGHTING_Big_Ass_Fans.EDRVC. Press Install



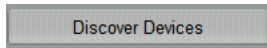
3. The driver will advise you that you have 90 days to test the driver out. If you have purchased an activation key please type it in here then click on Apply and lastly Activate Licence.

Activation Key	
Activation Status	TRIAL - 48 HOURS REMAINING

4. Note that if you have typed in a valid activation key your status will change to ACTIVATED (you need to click off of the driver onto something else and back again to see the changes to the status).

Activation Status	ACTIVATED
-------------------	-----------

5. Click on the Discover Devices / Auto Setup button to set up fans



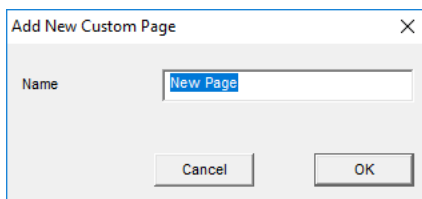
6. The driver will now automatically import associated fan/light drivers

V1 Additional Setup

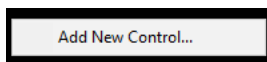
1. Now we have to create a custom page to display the devices.
2. Click on the arrow next to Custom Pages
3. Click on Add New Custom Page



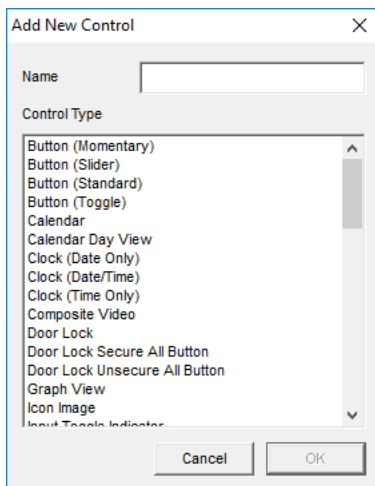
4. Type a name for the page



5. Click on the + symbol next to your new custom page to expand it
6. Select the format you want to create your page for (you may need to create for all 3 formats).
7. Right click on the page and „Add New Control“



8. It will now prompt you for the control type

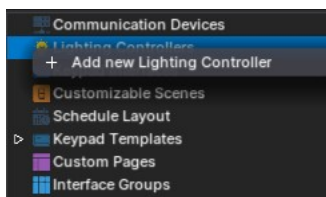


9. You can utilize the following controls for the Big Ass Lights / Big Ass Fans
 - a. Light Switch Control
 - b. Light Toggle Control (this is for whoosh and auto modes)
10. Right click on the control and click on Show properties
11. Click on the Connect to drop down box and select the fan or light you want to tie in.
12. Repeat steps 6 to 11 for each Big Ass Fan and Big Ass Light you have installed.
13. Congratulations you have successfully setup the Big Ass Fans driver. Please note, a licence purchase will be required to use this driver outside of the initial trial period

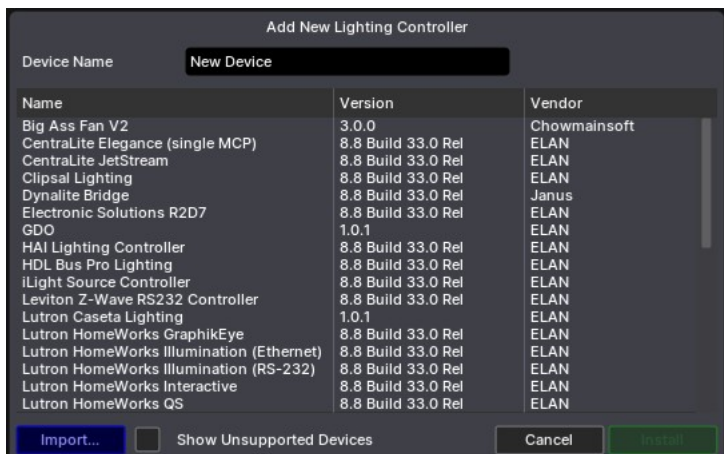
Manual Setup (V2)

Use this procedure if MDNS Discovery fails.

1. Right Click Lighting Controllers, and Add New Lighting Controller



2. Press Import Button, and Select the CHOWMAIN_BigAssFans_V2.EDRVC. Press Install



3. The driver will advise you that you have 90 days to test the driver out. If you have purchased an activation key please type it in here then click on Apply and lastly Activate Licence.

Activation Key	<input type="text"/>
Activation Status	TRIAL - 48 HOURS REMAINING

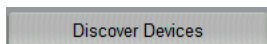
4. Note that if you have typed in a valid activation key your status will change to ACTIVATED (you need to click off of the driver onto something else and back again to see the changes to the status).

Activation Status	ACTIVATED
-------------------	-----------

5. Set IP Address and Port and apply

Install Date	7/26/2023 11:13 AM
Powerlink	< NONE >
IP Address	192 . 168 . 1 . 32
Port	31415
Activation Key	Trial

6. Click on the Discover Devices / Auto Setup button to set up fans



7. The driver will now automatically import associated fan/light drivers

CONFIGURATION DETAILS

Discovery (V2)

The following table provides settings used in Configurator when connecting to Big Ass Fans / Light V1 devices. Please refer to the Configurator Reference Guide for more details.

Discovery Driver

- Name: User Defined
- System ID: Auto Detected
- Driver Version: Auto Detected
- Driver Vendor: Chowmain Software & Apps
- Device Type: Big Ass Fan V2
- ELAN MAC Address: Mac Address of your Nice Home Management Controller
- Device UUID: Used for Diagnostics Assistance
- Debug Mode: Defines how Debug information is handled
- Debug Level: Verbosity of debug information
- Error Reporting: Defines whether critical errors are automatically reported
- Activation Key: This is the driverCentral activation Key
- Cloud Status: Auto Detected. This provides the licence status feedback
- Total Devices Detected: Number of detected Devices
- IP Address: Not Used
- Port: Not Used
- Perform Command: Used to Run Custom Commands
- AutoSetup New Device: Defines whether new devices are auto-setup on discovery or not

Lighting/Fan Device

- Name: User Defined
- Display Name: User Defined
- System ID: Auto Detected
- Location: Room the device is located in
- TYPE: DO NOT TOUCH THIS. Type of BAF device command which this driver controls. If you change this, delete the device and run Auto-Setup again

Notes

1. The driver requires a valid licence for use. Licences can be purchased from the driverCentral website. All of the licences are site licences. This means that you can use as many instances of the driver as you want in a single system with the one licence. The driver also comes with a built in 90 day trial. The driver will provide feedback as to the state of the licence in the Activation Status field.

Fan V2

The following table provides settings used in Configurator when connecting to Big Ass Fans / Light V1 devices. Please refer to the Configurator Reference Guide for more details.

Lighting Interface (Big Ass Fans Haiku)

- Name: User Defined
- System ID: Auto Detected

- Driver Version: Auto Detected
- Driver Vendor: Chowmain Software & Apps
- Device Type: Big Ass Fan V2
- Activation Key: This is the driverCentral activation Key
- Activation Status: Auto Detected. This provides the licence status feedback
- IP Address: IP Address of the FAN
- Port: Port of the fan. This should almost always be 31415
- Perform Command: Used to Run Custom Commands
- AutoSetup New Device: Defines whether new devices are auto-setup on discovery or not

Diagnostics:

- ELAN MAC Address: Mac Address of your Nice Home Management Controller
- Device UUID: Used for Diagnostics Assistance
- Debug Mode: Defines how Debug information is handled
- Debug Level: Verbosity of debug information
- Error Reporting: Defines whether critical errors are automatically reported

Lighting/Fan Device

- Name: User Defined
- Display Name: User Defined
- System ID: Auto Detected
- Location: Room the device is located in
- TYPE: DO NOT TOUCH THIS. Type of BAF device command which this driver controls. If you change this, delete the device and run Auto-Setup again

Notes

1. The driver requires a valid licence for use. Licences can be purchased from the driverCentral website. All of the licences are site licences. This means that you can use as many instances of the driver as you want in a single system with the one licence. The driver also comes with a built in 90 day trial. The driver will provide feedback as to the state of the licence in the Activation Status field.

V1

The following table provides settings used in Configurator when connecting to Big Ass Fans / Light V1 devices. Please refer to the Configurator Reference Guide for more details.

Lighting Interface (Big Ass Fans Haiku)

- Name: User Defined
- System ID: Auto Detected
- Driver Version: Auto Detected
- Driver Vendor: Chowmain Software & Apps

- Device Type: Big Ass Fan V2
- Activation Key: This is the driverCentral activation Key
- Activation Status: Auto Detected. This provides the licence status feedback
- Debug Mode: Enable / Disable Debug Mode
- IP Address: Auto Detected
- Port: Auto Detected
- Perform Command: Used to Run Custom Commands

Lighting/Fan Device

- Name: User Defined
- Display Name: User Defined
- System ID: Auto Detected
- Location: Room the device is located in
- Device ID: DO NOT TOUCH THIS. This defines the UUID of the BAF Device. If you change this, delete the device and run DISCOVER again
- TYPE: DO NOT TOUCH THIS. Type of BAF device command which this driver controls. If you change this, delete the device and run DISCOVER again

Notes

1. The driver requires a valid licence for use. All of the licences are site licences. This means that you can use as many instances of the driver as you want in a single system with the one licence. The driver also comes with a built in 90 day trial. The driver will provide feedback as to the state of the licence in the Activation Status field.
2. This is used as a unique identifier in the driver. Do not touch these. If you do. Delete the light / fan and press the DISCOVER button again.

Troubleshooting

The auto discovery process isn't finding my devices, why?

The driver sends a UDP packet out to the subnet that the C4 controller is on

Reasons for the driver not finding your devices are:

1. The devices are on a different subnet
2. There is a network device, like a wireless access point or switch that is dropping UDP packets.
 - In most cases, UDP packets received by an access point from the physical network are not passed on to the wireless network. This is generally done to maintain wireless speeds. Most wireless APs provide an option to allow UDP packets through
 - Broadcast storm control is enabled and limiting discovery
 - UDP Broadcast traffic Routing between LAN and WiFi is disabled and must be enabled
3. The Fans are still configured to use the Haiku Mobile App and must be updated using the Big Ass Fans Mobile application
4. Router is not relaying MDNS packets correctly

I'm still using the Haiku App

- The Haiku Mobile app requires the V1 driver which has limited capabilities.
- We strongly recommend upgrading to the V2 driver and the new Big Ass Fans Mobile App (which is a free upgrade for existing users)

I Accidentally deleted one of my devices which I require

- Re-run Discover / AutoSetup again to recreate them

The various Fan devices get added, but they do not operate

- Ensure the Licence has been added to all controllers

Licensing

- How does the trial period work?

All Chowmain drivers are free to use for a set trial period. When the trial expires the driver will cease to function until you purchase a licence and apply it to the driverCentral project.

- Where do I buy a Licence from?

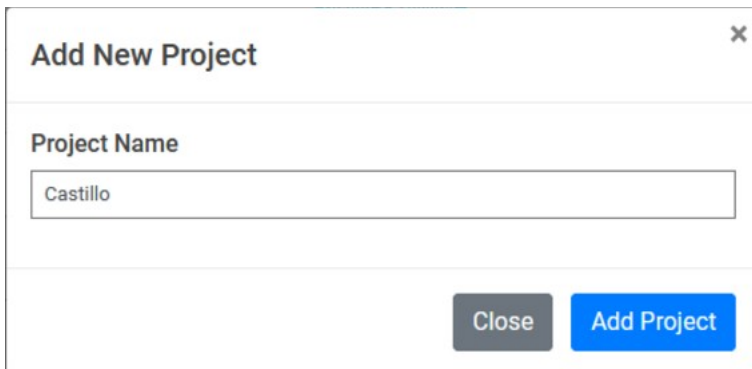
This driver is developed by Chowmain software & Apps and is distributed by driverCentral, Inc
<https://www.drivercentral.io/chowmain-ltd>

To purchase a driver:

1. On driverCentral, purchase a license and register it to your project
2. If the driver is not already installed in your project, download it and install it
3. If necessary, use the cloud driver's Action: "Check Drivers" to force the licence to download into the project


Creating a Project on Driver Central

1. Visit <http://www.drivercentral.io>
2. Log into your driver Central dealer account
3. Click **Portal**
4. Click **New Project**
5. Enter the project name

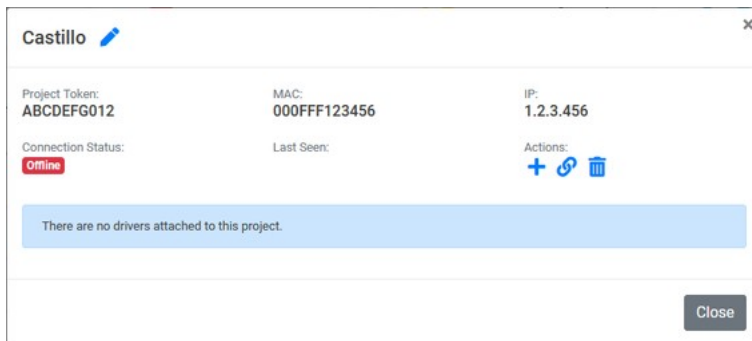


The screenshot shows a modal dialog box titled "Add New Project". Inside the dialog, there is a label "Project Name" above a text input field. The input field contains the text "Castillo". At the bottom right of the dialog, there are two buttons: a grey "Close" button and a blue "Add Project" button.

6. Click **Add Project**
7. Click on the project we just created

Project	Status	Created
 Castillo	Unassigned Project	1999-12-31 23:59:56

- Take note of the **Project Token** as this will be used later when we install the Cloud Driver



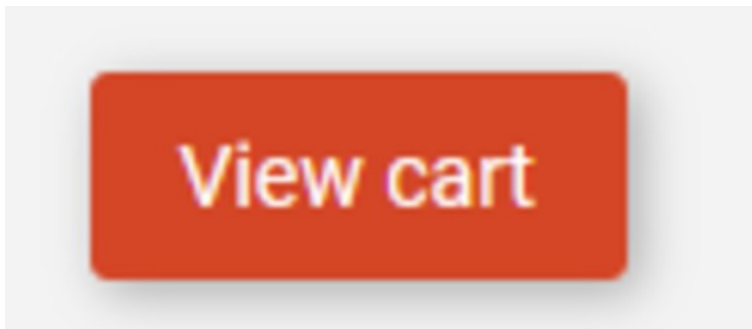
- Click **Close**

Purchasing a Driver Licence

- Visit <https://www.drivercentral.io/chowmain-ltd/> and find the product/driver you want to purchase a licence for
- Click on **Add to Cart**

ADD TO CART

- Now click the shopping cart icon (top right) and click **View cart**





- Confirm that your order is correct and click on **Proceed to checkout**

Proceed to checkout

- Choose your payment option, provide the relevant details and click **Place order**

Checkout


Paypal
Paypal, or Credit Card...


Credit Card
Visa, Mastercard, etc...

☐ Select this check box to accept the [Terms and Conditions](#)
☐ [Subscribe to our newsletter](#)

Place order (\$190.00)

6. You will now be at a page where you can see your purchased licence

License Name	License Key	Project Assigned	Action
[Redacted]			Assign to Project

7. From here assign the licence to the project we created or if you did not follow that step create a new project

License Assignment for 221

Assign License to Existing Project

Select Existing Project:

New Project (enter project name below) ▼

Or...

Create a new project

Enter New Project Name

Enter email for Installer Notifi

Are you sure you want to do this?

Assign License to Project?

Developer Information



Copyright © 2024 Chowmain Ltd. <http://www.chowmainsoft.com>

All information contained herein is, and remains the property of Chowmain Ltd and its suppliers, if any. The intellectual and technical concepts contained herein are proprietary to Chowmain Ltd and its suppliers and may be covered by U.S. and Foreign Patents, patents in process, and are protected by trade secret or copyright law. Dissemination of this information or reproduction of this material is strictly forbidden unless prior written permission is obtained from Chowmain Ltd.

Information stated in this document is current as of July 2020 and may change. For latest information please visit <http://www.chowmainsoft.com>

Support

Ticket / Live Chat Support

We provide ticket based support and live chat support for those who can't contact us via phone. Click the button below to visit our online helpdesk.

Support Centre	Hours of Operation	URL
American Support Desk	8:30AM – 4:30PM Mountain Time	https://help.drivercentral.io/

Phone Support

Support Center	Hours of Operation	Phone Number
Australian Support Desk	6:30AM – 5:30PM Australian Eastern Time	+61 3 9028 6999

Driver Documentation

All of our drivers come with detailed instructions on how to install and configure the driver for use in different projects. Please refer to the documentation included with the driver you downloaded, or [contact us](#) if you are unable to locate the documentation for your driver.

CHANGELOG

Version 2024.7.29 - 29-JUL-2024

- Modernise Backend (Fan V1)
- Add Improved Troubleshooting and Submit Diagnostics support (Fan V1)
- Upgrade Communication Stack (All)

Version 3.1.3 - 04-APR-2024

- [Bug] Fix Fan Speed Feedback (Fan V2)

Version 3.1.2 - 19-SEP-2023

- [Diagnostics] Add Further Diagnostics
- [Bug] Resolve Framework issue causing crash during Initialisation after driver reboot in some circumstances. This prevents driver from connecting.
- [Bug] In some circumstances, CCT may be invalid. Fixed

Version 3.1.1 - 15-SEP-2023

- [Diagnostics] Improve Diagnostics

Version 3.1.0 - 24-AUG-2023

- [Enhancement] Activation/Licencing Improvements (Fan V2 / Discover)
- [Bug] Identified Potential Memory Leak which may occur on systems when fans are not in use for long periods (Fan V2 / Discover)
- [Performance] Improved Memory Usage (Fan V2 / Discover)
- [Bug] Improvements to connection (Fan V2)

Version 3.0.0 - 20-JUL-2023

- [Enhancement] Introducing Our new V2 Discovery Driver and new V2 fan driver. Upgrade to Big Ass Fans Mobile App is required

Version 2.9.2 - 16-JUN-2023

- [Bug] Fix issues with feedback and auto-detection (V2)

Version 2.9.1 - 05-JUN-2023

- [Enhancement] Introducing new V2 Driver. Adds support for Big Ass Fans App, and new driver (V2)

Version 2.0.6 - 27-APR-2021

- [Bug] Resolved issues with trial licencing no activating.

Version 2.0.2 - 18-SEP-2018

- [Bug] Resolved issues with multicast control

Version 2.0.1 - 30-AUG-2018

- [Features] Added fan whoosh, fan auto and light auto modes
- [Enhancement] Improved communications for multiple fans

Version 2.0.0 - 20-AUG-2018

- Initial Release