



---

## Overview

---

The MQTT Broker driver connects Control4 to an MQTT broker (such as Mosquitto, Home Assistant, or other MQTT-compatible platforms). It manages the connection and provides pub/sub services to child drivers (switch, button, contact, etc.) that connect via the MQTT broker connection binding.

## Index

---

- [System Requirements](#)
- [Features](#)
- [Installer Setup](#)
  - [DriverCentral Cloud Setup](#)
  - [Driver Installation](#)
  - [Driver Setup](#)
    - [Driver Properties](#)
      - [Cloud Settings](#)
      - [Driver Settings](#)
      - [MQTT Settings](#)
  - [Driver Actions](#)
- [Developer Information](#)
- [Support](#)
- [Changelog](#)

# System Requirements

---

- Control4 OS 3.3+
- An MQTT broker accessible on the local network

## Features

---

- Local network communication requiring no cloud services
- Connects to any standard MQTT broker
- Supports username/password authentication
- Manages subscriptions for connected child drivers
- Automatic reconnection on disconnect
- Message caching for late-subscribing devices

# Installer Setup

## DriverCentral Cloud Setup

If you already have the [DriverCentral Cloud driver](#) installed in your project you can continue to [Driver Installation](#).

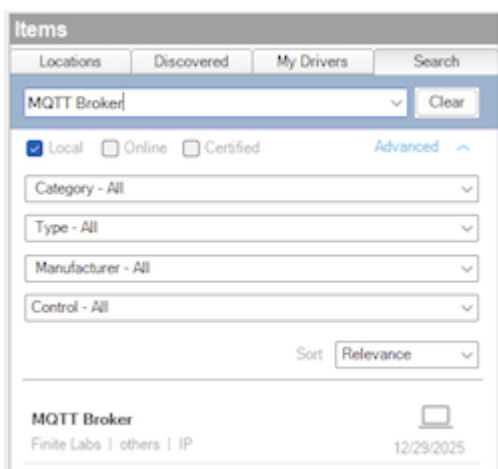
This driver relies on the DriverCentral Cloud driver to manage licensing and automatic updates. If you are new to using DriverCentral you can refer to their [Cloud Driver](#) documentation for setting it up.

## Driver Installation

Driver installation and setup are similar to most other ip-based drivers. Below is an outline of the basic steps for your convenience.

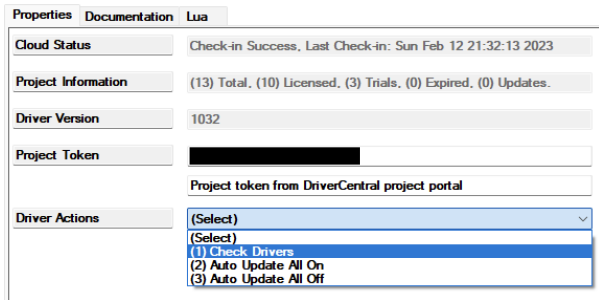
1. Download the latest `control4-mqtt.zip` from [DriverCentral](#).
2. Extract and [install](#) the `mqtt_contact.c4z` , `mqtt_broker.c4z` , `mqtt_button.c4z` , and `mqtt_switch.c4z` drivers.
3. Use the "Search" tab to find the "MQTT Broker" driver and add it to your project.

⚠ A **single** broker driver instance is required per broker you wish to connect to.



4. Select the newly added driver in the "System Design" tab. You will notice that the `Cloud Status` reflects the license state. If you have purchased a license it will show `License Activated` , otherwise `Trial Running` and remaining trial duration.

5. You can refresh license status by selecting the "DriverCentral Cloud" driver in the "System Design" tab and perform the "Check Drivers" action.



6. Configure the [Device Settings](#) with the connection information.
7. After a few moments the [Driver Status](#) will display `Connected`. If the driver fails to connect, set the [Log Mode](#) property to `Print` and run action [Reconnect](#) from the actions tab. Then check the lua output window for more information.

## Driver Setup

---

### Driver Properties

#### Cloud Settings

##### Cloud Status

Displays the DriverCentral cloud license status.

##### Automatic Updates

Turns on/off the DriverCentral cloud automatic updates.

#### Driver Settings

##### Driver Status (read-only)

Displays the current status of the driver.

##### Driver Version (read-only)

Displays the current version of the driver.

##### Log Level [ Fatal | Error | Warning | **Info** | Debug | Trace | Ultra ]

Sets the logging level. Default is `Info`.


##### Log Mode [ Off | Print | Log | Print and Log ]

Sets the logging mode. Default is `Off`.

# MQTT Settings

## Broker Address

Sets the broker IP address (e.g. `192.168.1.30` ). Domain names are allowed as long as they can be resolved to an accessible IP address by the controller. HTTPS is not supported.

 If you are using an IP address, you should ensure it will not change by assigning a static IP or creating a DHCP reservation.

## Port

Sets the broker port. The default port for most brokers is `1883` .

## Username

Sets the username for broker authentication (optional).

## Password

Sets the password for broker authentication (optional).

## Keep Alive

Sets the keep-alive interval in seconds. Default is `60` .

## Driver Actions

### Reconnect

Manually trigger a reconnection to the MQTT broker.

# Developer Information

---



**FINITE LABS**

Copyright © 2025 Finite Labs LLC

All information contained herein is, and remains the property of Finite Labs LLC and its suppliers, if any. The intellectual and technical concepts contained herein are proprietary to Finite Labs LLC and its suppliers and may be covered by U.S. and Foreign Patents, patents in process, and are protected by trade secret or copyright law. Dissemination of this information or reproduction of this material is strictly forbidden unless prior written permission is obtained from Finite Labs LLC. For the latest information, please visit

<https://drivercentral.io/platforms/control4-drivers/utility/mqtt>

## Support

---

If you have any questions or issues integrating this driver with Control4 or MQTT, you can contact us at [driver-support@finitelabs.com](mailto:driver-support@finitelabs.com) or call/text us at +1 (949) 371-5805.

# Changelog

---

**v20251229 - 2025-12-29**

---

## Added

- Initial Release