

# PJLink Installation and Usage Guide



**Version:** 2024.7.30  
**Date:** Monday, July 29, 2024  
**Authors:** Alan Chow

chowmainsoft

# Contents

<b>Overview.....</b>	<b>4</b>
<b>Features.....</b>	<b>5</b>
<b>FAQ.....</b>	<b>6</b>
What manufacturers use the PJLink standard?.....	6
What projectors will this work on?.....	6
What is Class 1 and Class 2 PJLink Protocols?.....	6
<b>Setup.....</b>	<b>7</b>
Requirements.....	7
Projector Configuration.....	7
Installation Process.....	7
Nice Home Management Configuration.....	9
Notes.....	10
Common Mistakes.....	10
<b>Licensing.....</b>	<b>11</b>
<b>Creating a Project on Driver Central.....</b>	<b>11</b>
<b>Purchasing a Driver Licence.....</b>	<b>12</b>
<b>Developer Information.....</b>	<b>14</b>
<b>Support.....</b>	<b>15</b>
Ticket / Live Chat Support.....	15
Phone Support.....	15
Driver Documentation.....	15
<b>CHANGELOG.....</b>	<b>16</b>
Version 2024.7.30 - 30 JUL 2024.....	16
Version 2.1.9 - 13-AUG-2021.....	16
Version 2.1.8 - 27-APR-2021.....	16
Version 2.1.4 - May 20 2019.....	16
Version 2.1.2 - May 15 2019.....	16
Version 2.1.0 - Jul 19 2018.....	16
Version 2.0.5 - 17-JAN-2017.....	16
Version 2.0.3 - 17-NOV-2017.....	16
Version 2.0.0 - 16-OCT-2017.....	16



## Overview

PJLink is a new unified standard designed to make communication interfaces and communication protocols that have been different from one projector manufacturer to another uniform and common. Several Japanese manufacturers have adopted the PJLink standard for their projectors. With this PJLink driver for Nice Home Management you can control multiple projectors via IP with 2 way feedback. Supported manufacturers include (but not limited to) BenQ, Mitsubishi Electric, InFocus, NEC, Casio, Canon, Sharp, Sky, Seiko Epson, Sony, Panasonic, Hitachi and Ricoh.

# Features

- IP Control
  - Control
  - Power On / Off
  - Input Switching
  - Feedback
  - Maker Name
  - Model Name
  - Other Info
  - Serial Number
  - Software Version
  - Lamp Replacement Model Number
  - Filter Replacement Model Number
  - Filter Usage Time
  - Lamp Hours
  - Current Power Status
  - Current Input
  - Input Resolution
  - Recommended Resolution
  - Error Status – Fan
  - Error Status – Lamp
  - Error Status – Temp
  - Error Status – Cover Open
  - Error Status – Filter
  - Error Status - Others

### What manufacturers use the PJLink standard?

The following manufacturers utilise the PJLink standard

- BenQ
- Mitsubishi Electric
- InFocus
- NEC Display Solutions, Ltd
- CASIO COMPUTER CO., LTD
- Canon Inc.
- SHARP CORPORATION
- Sky CO., LTD
- SEIKO EPSON CORPORATION
- Sony Corporation
- Panasonic Corporation
- Hitachi Maxell, Ltd.
- RICOH COMPANY,LTD

### What projectors will this work on?

The PJLink website has a list of projectors that make/models. Please see

<http://pjlink.jbmia.or.jp/english/list.html>

*Note that this is not a definitive list. Please refer to the projector documentation to see if it supports PJLink.*

### What is Class 1 and Class 2 PJLink Protocols?

Projectors support different versions of the protocol.

Our driver supports both Class 1 and Class 2. Class 2 is an expansion of the Class 1 PJLink protocol which provides the following additional functionality:

- Serial Number
- Software Version
- Internal Resolution
- Recommended Resolution
- Replacement Lamp Model
- Replacement Filter Model
- Filter Usage Time

# Setup

## Requirements

- Nice Home Management Core 8.8.600 or later is required
- This driver requires a valid licence for use. More information is available on the [Chowmain Website](#). Customers can also trial the driver for 90 days prior to licence purchase. Dealers who have showrooms can demonstrate the driver for free via the Chowmain Dealer Showroom Licence. You can apply for a showroom licence via the Chowmain website.
- PJLink Compatible Projector

## Projector Configuration

PJLink should be enabled on the projector's settings. Please consult the manufacturer's installation manual on how to set this up. Projectors should also be set to a static IP address to ensure communications with the driver. If a password is setup on the projector please take note of this as it will be used in the driver setup.

## Installation Process

Once you have physically installed your PJLink compatible projector and have connected and configured it to your network please follow the steps below.

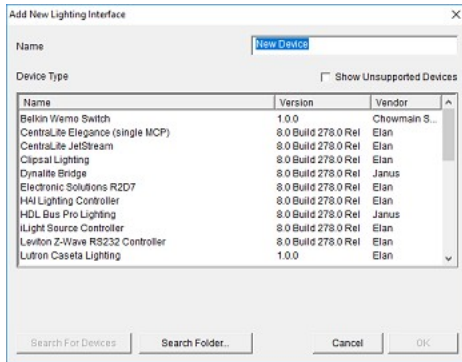
1. Download the latest version of the driver
2. Extract the file to your preferred driver storage location.
3. In configurator click on the Media tab



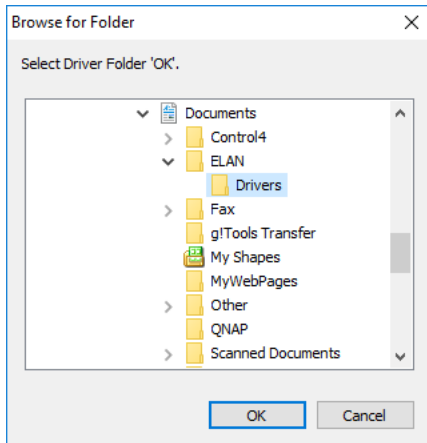
4. Click on the arrow next to Video Displays
5. Click on Add New Video Display



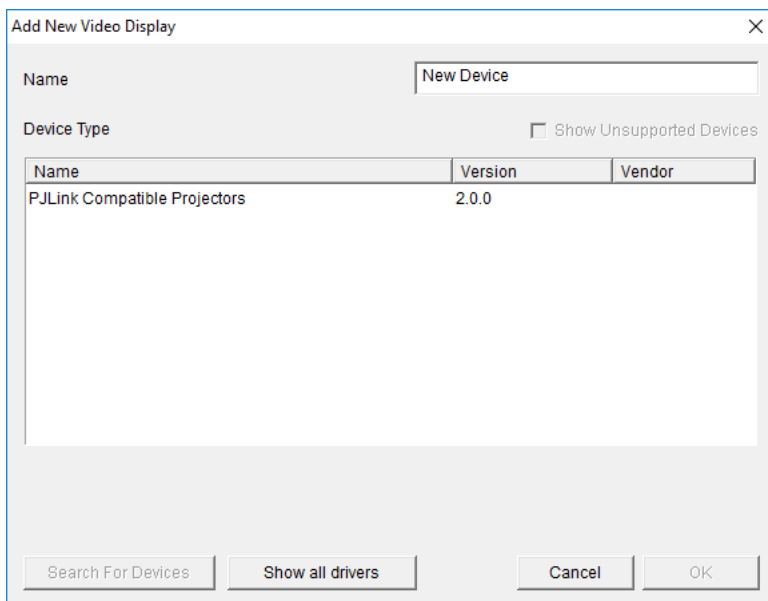
6. Click on the Search Folder button



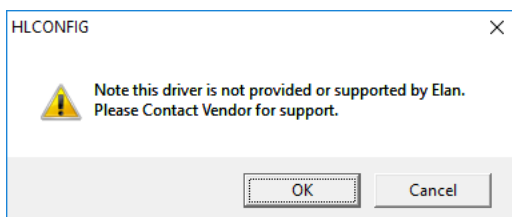
7. Select your driver folder and press ok



8. Select your PJLink driver and press ok



9. Configurator will warn you that the driver is not provided or supported by Nice/ELAN. Click on OK.





10.Type in the IP Address of the projector

IP Address	172 . 16 . 16 . 104
------------	---------------------

11.If you have set a password please type it in.

Password	JBMIAPjectorLink
----------	------------------

12.If this is a Zone please set Show as Zone to Yes

Show as Zone	No
--------------	----

13.Click on Apply

Apply
-------

14.Click on the Init button to initialize the driver.

Init
------

15.Wait about 20 seconds then click off of the driver and click back onto it.

16.If the driver has connected then you will see the Status change along with PJLink Class and Current Power change.

Connection Status	ONLINE
PJLink Class	2
Current Power	ON

17.Congratulations you have successfully setup the PJLink driver for Nice Home Management. Please note, a licence purchase will be required to use this driver outside of the initial trial period

## Nice Home Management Configuration

The following table provides settings used in Configurator when connecting to PJLink Projector. Please refer to the Configurator Reference Guide for more details. In the table below:

- *User Defined*, etc. Type in the desired name for the item.
- *Auto Detect*, etc. The system will auto detect this variable.

Devices	Variable Name	Setting	Comments
Video Display (PJLink)	Name	" User Defined"	
	Compatible Projector)		
	System#	" Auto Detect"	
	Driver Version	" Auto Detect"	
	Driver Vendor	Chowmain Software & Apps	
	Device Type	PJLink Compatible Projector	
	Activation Key	" User Defined" This is the driverCentral activation Key	See Note 1

Devices	Variable Name	Setting	Comments
	Activation Status	"Auto Detect" This provides the licence status feedback	See Note 1
	Debug Mode	"User Defined" This sets the logging for the driver.	See Note 2
	Connection Status	"Auto Detect" Will be ONLINE or OFFLINE depending on status	
	PJLink Class	"Auto Detect" Will be 1 or 2 depending on what the projector supports	
	Current Power	"Auto Detect" Will be ON, OFF, COOLING or WARMING	
	IP Address	"User Defined" Enter in the IP Address of the projector here	
	Port	"User Defined" Is the Port of the projector (default should be fine mostly)	
	User Name	"User Defined" Leave blank	
	Password	"User Defined" Is the projector's password if a password is required	
	Show as Zone	"User Defined" Set to Yes if this is zone instead of a receiver/amp	

## Notes

1. The driver requires a valid licence for use. All of the licences are site licences. This means that you can use as many instances of the driver as you want in a single system with the one licence. The driver also comes with a built in 90 day trial. The driver will provide feedback as to the state of the licence in the Activation Status field.
2. Debug Mode – This is used for troubleshooting. By default it is set to off. print is used by technical support for live troubleshooting.

## Common Mistakes

1. This driver only supports PJLink compatible projectors. Please make sure that the projector you have connected it to supports PJLink.
2. Please make sure that you have set a static IP address up as it will not automatically change to suit dynamic IP addresses
3. If a password is set in the projector then it must be set in the driver as well.
4. The init button must be pressed after all the settings have been completed. The driver will then connect for the first time and will be ok going forward across reboots and if the projector loses connection to the network.
5. Variables must be added to a custom page by the integrator if required.

## Licensing

- How does the trial period work?

All Chowmain drivers are free to use for a set trial period. When the trial expires the driver will cease to function until you purchase a licence and apply it to the driverCentral project.

- Where do I buy a Licence from?

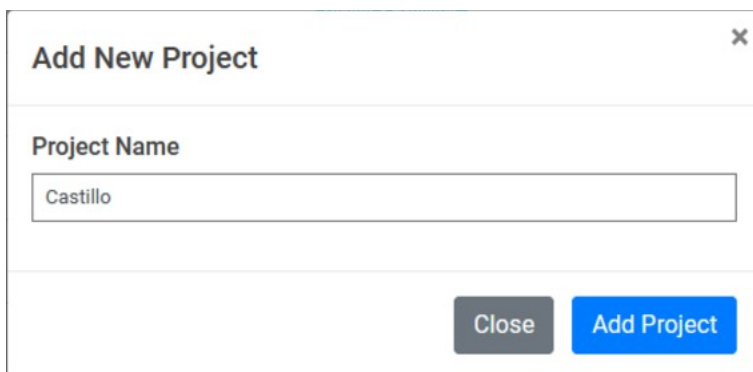
This driver is developed by Chowmain software & Apps and is distributed by driverCentral, Inc  
<https://www.drivercentral.io/chowmain-ltd>

To purchase a driver:

1. On driverCentral, purchase a license and register it to your project
2. If the driver is not already installed in your project, download it and install it
3. If necessary, use the cloud driver's Action: "Check Drivers" to force the licence to download into the project


## Creating a Project on Driver Central

1. Visit <http://www.drivercentral.io>
2. Log into your driver Central dealer account
3. Click **Portal**
4. Click **New Project**
5. Enter the project name

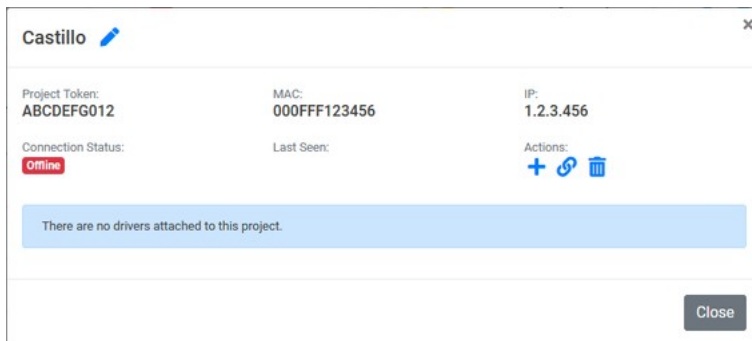


The screenshot shows a modal dialog box titled "Add New Project". Inside the dialog, there is a label "Project Name" above a text input field. The input field contains the text "Castillo". At the bottom right of the dialog, there are two buttons: a grey "Close" button and a blue "Add Project" button.

6. Click **Add Project**
7. Click on the project we just created

Project	Status	Created
 Castillo	<span style="background-color: yellow;">Unassigned Project</span>	1999-12-31 23:59:56

- Take note of the **Project Token** as this will be used later when we install the Cloud Driver



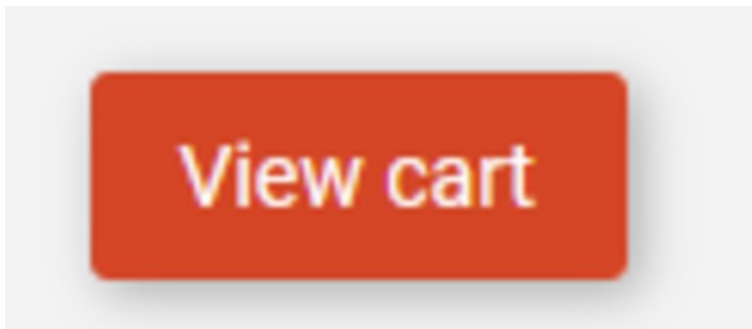
- Click **Close**

## Purchasing a Driver Licence

- Visit <https://www.drivercentral.io/chowmain-ltd/> and find the product/driver you want to purchase a licence for
- Click on **Add to Cart**

ADD TO CART

- Now click the shopping cart icon (top right) and click **View cart**




- Confirm that your order is correct and click on **Proceed to checkout**


Proceed to checkout

- Choose your payment option, provide the relevant details and click **Place order**

# Checkout



Paypal  
Paypal, or Credit Card...



Credit Card  
Visa, Mastercard, etc...

☐ Select this check box to accept the [Terms and Conditions](#)

☐ [Subscribe to our newsletter](#)

Place order (\$190.00)

6. You will now be at a page where you can see your purchased licence

License Name	License Key	Project Assigned	Action
[REDACTED]	[REDACTED]	[REDACTED]	Assign to Project

7. From here assign the licence to the project we created or if you did not follow that step create a new project

✕

# License Assignment for

221

✕

## Assign License to Existing Project

Select Existing Project:

New Project (enter project name below)

▼

Or...

## Create a new project

Enter New Project Name

Enter email for Installer Notifi

Are you sure you want to do this?

Assign License to Project?

## Developer Information



Copyright © 2024 Chowmain Ltd. <http://www.chowmainsoft.com>

All information contained herein is, and remains the property of Chowmain Ltd and its suppliers, if any. The intellectual and technical concepts contained herein are proprietary to Chowmain Ltd and its suppliers and may be covered by U.S. and Foreign Patents, patents in process, and are protected by trade secret or copyright law. Dissemination of this information or reproduction of this material is strictly forbidden unless prior written permission is obtained from Chowmain Ltd.

Information stated in this document is current as of July 2020 and may change. For latest information please visit <http://www.chowmainsoft.com>

# Support

## Ticket / Live Chat Support

We provide ticket based support and live chat support for those who can't contact us via phone. Click the button below to visit our online helpdesk.

Support Centre	Hours of Operation	URL
American Support Desk	8:30AM – 4:30PM Mountain Time	<a href="https://help.drivercentral.io/">https://help.drivercentral.io/</a>

## Phone Support

Support Center	Hours of Operation	Phone Number
Australian Support Desk	6:30AM – 5:30PM Australian Eastern Time	+61 3 9028 6999

## Driver Documentation

All of our drivers come with detailed instructions on how to install and configure the driver for use in different projects. Please refer to the documentation included with the driver you downloaded, or [contact us](#) if you are unable to locate the documentation for your driver.

# CHANGELOG

## Version 2024.7.30 - 30 JUL 2024

- Modernise Backend
- Add Improved Troubleshooting and Submit Diagnostics support
- Upgrade Communication Stack
- Support Custom Port

## Version 2.1.9 - 13-AUG-2021

- Driver now forces a reconnection if it gets an authentication error

## Version 2.1.8 - 27-APR-2021

- Resolved issues with trial licencing no activating.

## Version 2.1.4 - May 20 2019

- Updated to resolve issues with reconnection on projector network issues.

## Version 2.1.2 - May 15 2019

- Updated to support Status error logging / colors

## Version 2.1.0 - Jul 19 2018

- Updated to latest Chowmain library. Improvements over socket connections, timers, callbacks and more.

## Version 2.0.5 - 17-JAN-2017

- Updated to support ELAN version 8.2. Note this is a mandatory update.
- Added events for errors

## Version 2.0.3 - 17-NOV-2017

- Critical Fix. If you are on an older version update immediately.

## Version 2.0.0 - 16-OCT-2017

- Initial Release