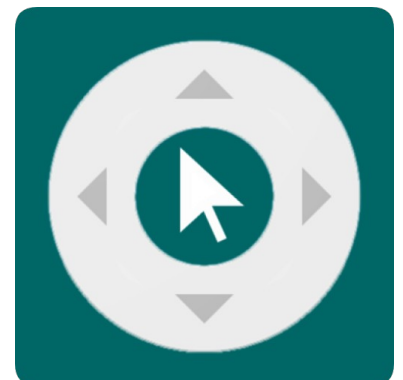


Zank Remote Installation and Usage Guide



Version: 1.0.3
Date: Tuesday, June 25, 2024
Authors: Richard Mullins



Contents

Overview.....	3
Features.....	4
Installation.....	5
Import TCM.....	5
Add the module to your project.....	6
Install Module.....	6
Network Settings.....	7
System Parameters.....	8
Core Module.....	8
Licence [required].....	8
Debug mode and logging [optional].....	8
Two Way Commands.....	9
Launch App.....	9

Overview

Want to control the Amazon Fire TV, Chromecast with Google TV, Nvidia Shield, Xiaomi Mibox, AirTV and more? The Chowmain Android TV driver is designed to control Google Android TV boxes. It is a software only solution so no extra hardware required.

This allows you to navigate the Android operating system and control applications as you would with a normal infra red remote control. No need to root the device and no need to install any additional hardware.

In addition to control there is full keyboard support for search (for apps that support it) with both full text search and direct text entry.

The Driver will also scan your device and provide a list of apps that can be launched directly, no need to use the menu to find apps any more.

This driver requires a 3rd party application called Zank Remote ([Amazon App Store/ Google Play Store](#)) be installed and configured on your android device. Just install the app from amazon app store or play store and follow the instructions to configure the Android TV box. We partnered with the developer of Zank to further develop their app to provide the functionality we require for integration. Note a portion of licencing revenue goes towards our partners at Zank to support the Zank app development.

Features

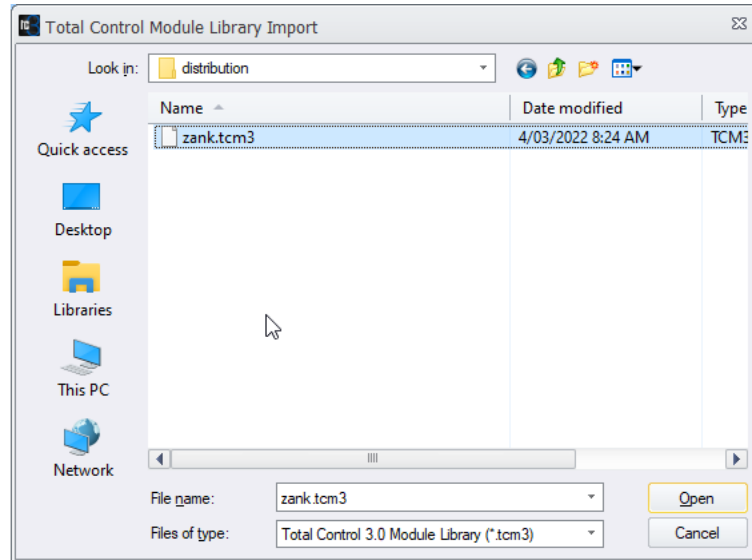
- IP Control of your Android TV or Fire TV device, no additional hardware required.
- Launch apps directly via a list or by name
- Apps are automatically discovered
- Control your app list using hide/show controls
- Promote the apps you use the most to the top of the list using favourites
- keyboard support for text entry and searching

Installation

To install the module, you will need to do the following

Import TCM

From the file menu, Import TCM Files



Add the module to your project

In Step 4. Add Other Drivers. You will need to

Install Module

Step 1 - select a room for the module

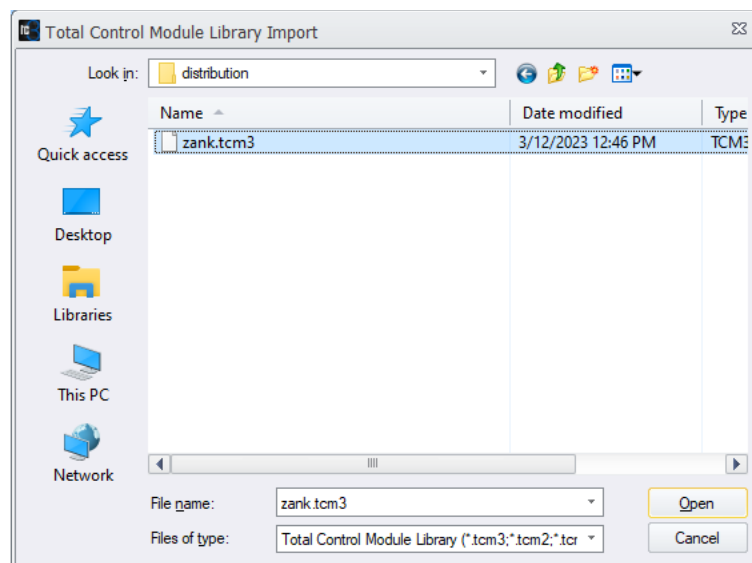
Step 2 - select My

Step 3 - select IP Database

Step 4 - select DVR

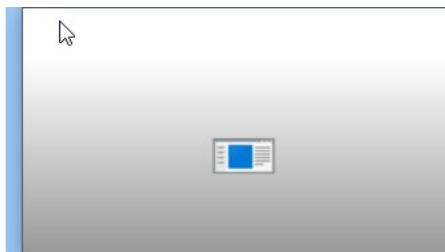
Step 5 - select ANDROID TV

Step 6 - ANDROID TV (double click)



Network Settings

Finally go to Step 6. Network Settings and Choose Non URC Devices. In the IP Address field enter the IP address for the Android TV. Optionally you can enter a value for the port (if you've require something different from the default) or just leave it on the default - 1028.



System Parameters

Core Module

The Android TV module does supports the following parameters

All system parameters are entered in the following format

KEY=VALUE

The following table details the system parameters that work with this module.

KEY	VALUE
LICENCE	The licence code
DEBUG	Puts the module into its debug mode

Licence [required]

The licence code you were given when you purchased the module. If this is left blank the module will automatically enter a trial period.

Debug mode and logging [optional]

TO enable logging from module startup, you need to add the DEBUG parameter and set it to ON. This is important to make sure we capture all the details at the module initialisation, including the results of the licence connection, and the initial connection to the device. This will write log files to the processor that can be retrieved by URC support. If you need to fetch the logs, please add this parameter and restart the processor. You will need to contact URC support to fetch the logs for you.

DEBUG=ON

Two Way Commands

The Android TV module supports the following Two Way command(s)

Launch App

The launch app command allows you to directly launch the app of your choice. The apps name needs to match the app title exactly. You can find the correct name of the app by checking the app list page.

The screenshot shows a dialog box titled "2-Way Module Command". It is divided into several sections:

- Name :** A text input field containing "Launch Netflix".
- Available Devices :** A dropdown menu showing "Android TV [Rack]".
- Available Command :** A dropdown menu showing "Launch App".
- Parameters :** A section on the right containing:
 - Netfix**: A dropdown menu.
 - Description**: A text input field containing "The name of the App you wish to launch".
 - Prev** and **Next** buttons.
- Result :** A section at the bottom containing:
 - ☐ Save the result
 - Variable :** A dropdown menu.
 - Create Variable** button.
- OK** and **Cancel** buttons at the bottom center.