



Nuki Smart Lock Bridge Driver version 3.0.0 (2401)

Overview

This driver allow controlling multiple Nuki Smart Locks through the Nuki Wi-Fi bridge.

Prerequisite

The Nuki Smart Lock need to be already paired and configured into the Nuki Bridge prior of using this driver

Supported Devices

- Nuki Smart Lock 2.0
- Nuki Smart Lock 3.0

Limitation

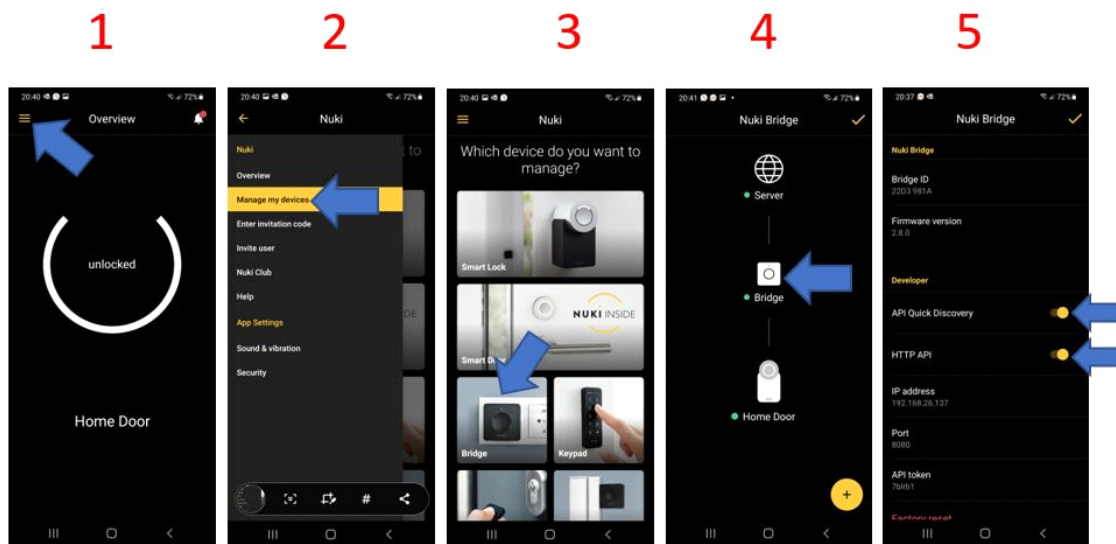
This driver only support the Nuki Smart Lock 2.0 and 3.0 with Nuki Bridge, no other Nuki devices are supported yet.

The communication method used is Plain Token, which is not encrypted so it need to be used on a secure local Wi-Fi network with no port forward or WAN access.

Setup summary

1- Set up and pair the Nuki Lock to the Nuki Bridge using the Nuki App. You don't need to create an account.

2- Make sure to enable API Quick Discovery and HTTP API from the Nuki Bridge settings in the app, as shown:



3- In the driver properties, you should see your Nuki Bridge in the Bridge Selector, if not, use the Discover Bridges Action.

4- Wait a few seconds for the driver to pull the bridge information

5- Add a Nuki Smart Lock V3 driver for each lock you have connected to this bridge

6- Follow the instruction in the Nuki Smart Lock V3 driver for lock configuration

Additional Functionalities

Manual IP Configuration: At any time, you manually enter the Bridge IP address in the driver properties. This will bypass the bridge discovery process and force a local connection.

Polling Interval: is a value in seconds that defines how often the driver will request a status update to the Nuki Bridge.