

Partner: Axion
Model: Touchpanel
Device Type: Touchpanel



GENERAL INFORMATION

SIMPLWINDOWS NAME: Axion Lighting Touchpanel

CATEGORY: Devices

VERSION: 1.0

SUMMARY: This module integrate an Axion Lighting Touchpanel into a Crestron Control System via TCP/IP.

The Axion Lighting Touchpanel module gives you control over the unit from within your crestron system using TCP/IP.

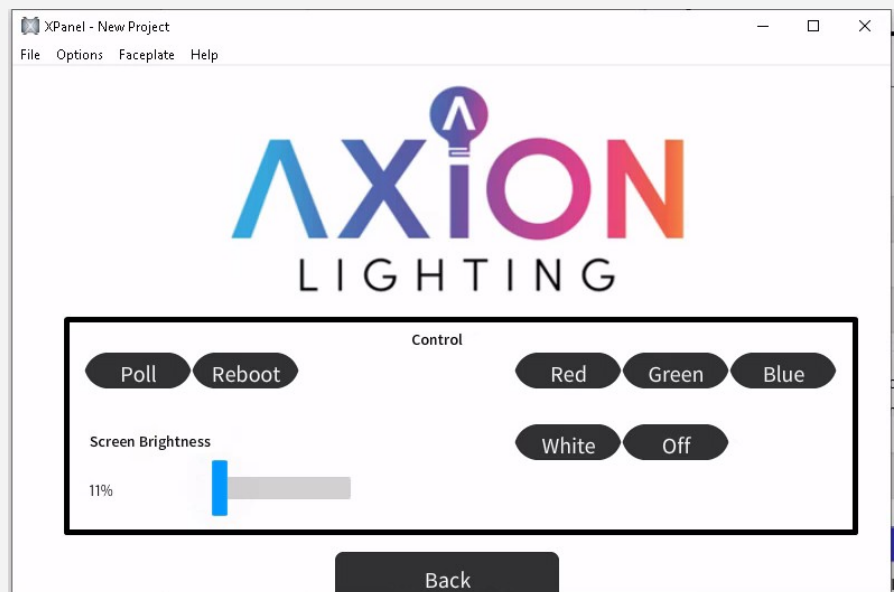
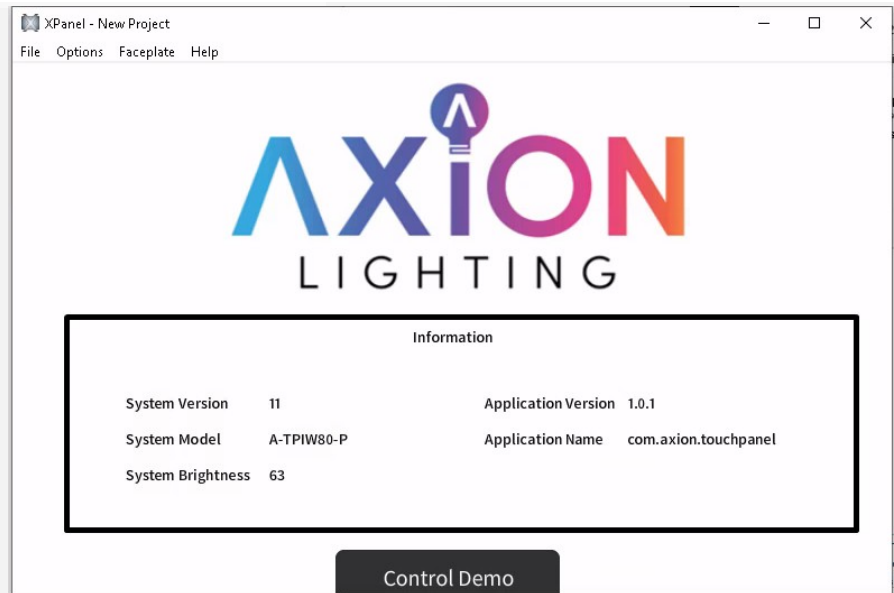
Features

- Reboot
- Volume Control
- Mute Control
- Screen Brightness
- LED Control (certain models only)

GENERAL NOTES:

A demo project is provided with a sample simpl windows program and vision tools ui that demonstrates how to configure and use the module with the Axion Lighting Touchpanel. See screenshots below of sample ui.

Partner: Axion
Model: Touchpanel
Device Type: Touchpanel



CRESTRON HARDWARE REQUIRED: 2 or 3 series processor.

SETUP OF CRESTRON HARDWARE: N/A

VENDOR FIRMWARE: V1.0

VENDOR SETUP:
Enter IP address of the touchpanel in the "device_ip\$" parameter field on the touchpanel module.
Enter the API Port of the touchpanel in the "http_port\$" parameter field on the touchpanel

Partner: Axion
Model: Touchpanel
Device Type: Touchpanel



module.Default is 8080 unless otherwise configured.

CABLE DIAGRAM: N/A

CONTROL:

POLL	D	Set high to trigger the module to poll the device.
REBOOT	D	Set high to issue a reboot to the device.
LED_RED	D	Set high to set the built-in led light to red on the device.
LED_GREEN	D	Set high to set the built-in led light to green on the device.
LED_BLUE	D	Set high to set the built-in led light to blue on the device.
LED_WHITE	D	Set high to set the built-in led light to white on the device.
LED_YELLOW	D	Set high to set the built-in led light to yellow on the device.
LED_PURPLE	D	Set high to set the built-in led light to purple on the device.
LED_TEAL	D	Set high to set the built-in led light to teal on the device.
LED_OFF	D	Set high to set the built-in led light to off on the device.
MUTE_ON	D	Set high to mute the currently set stream from the VOLUME_STREAM signal.
MUTE_OFF	D	Set high to unmute the currently set stream from the VOLUME_STREAM signal.
VOLUME_UP	D	Set high to ramp up the currently set stream from the VOLUME_STREAM signal.
VOLUME_DOWN	D	Set high to ramp down the currently set stream from the VOLUME_STREAM signal.
SCREEN_BRIGHTNESS	A	Set from 1-100 the brightness of the device screen.
VOLUME_LEVEL	A	Set from 1-15 the volume level of the currently set stream from the VOLUME_STREAM signal.
		Set to one of the below before performing actions like muting or volume ramping.
VOLUME_STREAM	S	"Music" "Ring" "Alarm" "Notification" "Voicecall"

FEEDBACK:

Partner: Axion
Model: Touchpanel
Device Type: Touchpanel



APPLICATION_VERSION	S	Displays the current version for the touchpanel Axion application
APPLICATION_NAME	S	Displays the current touchpanel Axion application name
SYSTEM_VERSION	S	Displays the current android os version running on the device.
SYSTEM_MODEL	S	Displays the current model of the device.
SYSTEM_BRIGHTNESS	D	Displays the current screen brightness of the device.

PARAMETER:

device_ip\$	S	IP address of the touchpanel.
http_port\$	S	API port for the touchpanel. Default is 8080 unless otherwise configured.

TESTING:

OPS USED FOR TESTING:	RMC3 1.501.2867.30341
SIMPL WINDOWS USED FOR TESTING:	4.11.06
DEVICE DB USED FOR TESTING:	102.05.001.00
CRES DB USED FOR TESTING:	77.00.003.00
SYMBOL LIBRARY USED FOR TESTING:	1082
SAMPLE PROGRAM:	Axion Lighting Touchpanel Demo
REVISION HISTORY:	v1.0 Release