

Light Agent

Cindev Agent Bundle



Compatible Control4 Systems:

Designed to work with OS 3.3+

Compatible Hardware:

Control4 OS3.3 compatible drivers (light_v2.c4i proxy)

Driver Download, Change Log & Documentation:

<https://drivercentral.io/platforms/control4-drivers/utility/light-agent/>

Content

- [Overview/Features](#)
- [Dealer Notes](#)
- [License Purchase & Assignment](#)
- [Driver Setup](#)

- [Driver Settings](#)
 - [Driver Properties](#)
 - [Events/Commands](#)
 - [UI Settings](#)
 - [UI Icon Styles](#)
 - [Showroom and Free Trial](#)
 - [Support](#)
 - [Warranty & Disclaimer](#)
 - [Developer Information](#)
-

Overview

A simple way to create presets for lighting including color and display these on Control4 Navigator

Features

- Select Single Color
- Select Temperature
- Trigger Lighting Scene
- Randomize RGB lights
- Rotate colors
- Auto Off Trigger
- Fade support
- Set brightness
- Group Lights together
- Part of the Cindev Agent Bundle



Dealer Notes

- Property: Auto Rename tells the driver to set the name AND icon of the driver automatically. For custom settings, set this to No
- Property: Preset Off Action can be used for custom Off actions.
 - Custom Event: Use Composer Programming for Off Actions
 - Set Lights to Black: Will set the 'color' of the selected Lights to Black {0,0,0}
- The driver does not have on/off states... It is simply a 'triggering' solution. Example: you can create a dashboard of colors, rotate and randomize buttons.
- The Rotate and Randomize Preset types will change the icon to the closest matching color icon available when it's selected. It will revert back to the general icon when not in use
- All Presets using the same light will clear any running OFF timers when another preset gets triggered. Example: If you have 2 presets (Red, Blue) where Red will set the lights to Black after 1 minute. If Red is pressed, then Blue is pressed, the Auto Off Timer will be cleared (Blue is now the preset in use)
- Control4 does not support the UIButton proxy to be displayed under the lighting tab. We recommend making the icons favorites to the room for ease of use.

License Purchase & Assignment

A single license will unlock as many instances of the driver as needed in your project. One instance of the Cloud Driver is required to activate all drivercentral licenses and trials. Here is a quick video that demonstrates the licensing process: <https://www.youtube.com/watch?v=xXiX1euk9bU1>

1. Create your project on the drivercentral.io website (this will generate a unique token used in the next step).
2. To download the driver, locate the downloads tab on the driver page on drivercentral.io. Once downloaded, unzip the file and add the driver to your drivers folder.
3. Install and activate the drivercentral's Cloud Driver in your project by pasting the previously generated token in your project. If there is no license associated with the project a trial will automatically activate so long as the driver has not been installed in the past on the controller.
4. To purchase a license, locate the driver on drivercentral.io website and add to the cart. Once checked out the purchased license will be found under available licenses in the projects portal.
5. Using the available licenses tool, add a license to activate the driver in that project.
6. Once the Cloud Driver checks in to the project (it does so once every hour) the driver will activate.
7. If needed, use the Cloud Driver's action "Check Drivers" to force the check in and activate the driver right away.

Your driver activation is now complete! You may now continue to Driver Setup. Further clarification with visual representation can be found in the articles on <https://help.drivercentral.io/>

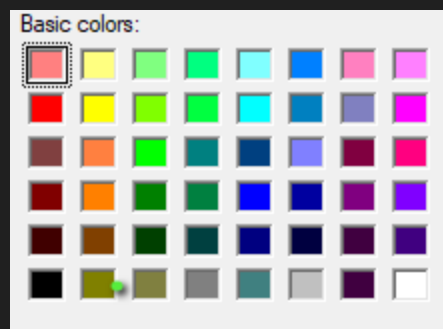
<https://www.drivercentral.io>

Driver Setup

1. Create a Room in the Project called (Lighting Presets) or use an existing room
2. Add driver to that room (the driver will be displayed automatically in the **Comfort** tab).
3. Choose **Preset Mode** Type
4. Set Preset settings for specific mode type

Preset Mode: Select Color

This preset type allows dealers to choose specific color for a group of RGB or RGBW lights. The driver contains 48 colored icons matching the 48 general colors Control4's color widget uses. Custom colors will set the icon to the closets color from the color widget.



- if *Auto Rename* is enabled
 - Driver name will match color name
 - Icon will match closets known color from color widget

Preset Mode: Select Temperature

This preset type allows dealers to choose specific ambiance temperature for a group of lights.

- if *Auto Rename* is enabled,
 - the kelvin value (ex. 1800K) will be used as the driver name
 - icon will match one of four different temperature icons (see [Icon Style](#) for more)

Preset Mode: Rotate Colors

This preset type will rotate to another color each time the icon is pressed. Use **Auto Forward** property to have driver automatically select the next color. The Colors property allows dealers to define colors to use.

If Rotate is running (Auto Forward in use) and the icon is pressed again, the driver will trigger **Off Action**

- if *Auto Rename* is enabled
 - the driver will be named 'Rotate'
 - Icon will match current color selected or Rotate icon

Preset Mode: Randomize Colors

This preset type will rotate to another color each time the icon is pressed. Use **Auto Forward** property to have driver automatically select the next color. The Colors property allows dealers to define colors to use.

If Randomize is running (Auto Forward in use) and the icon is pressed again, the driver will trigger **Off Action**

- if *Auto Rename* is enabled
 - the driver will be named 'Randomize'
 - Icon will match current activated color selected or Randomize icon

Preset Mode: Trigger Lighting Scene

This preset type will trigger a specific lighting scene. Driver sends 'TOGGLE' action to the lighting scene and so can work with On/Off style lighting scenes.

- if *Auto Rename* is enabled
 - Driver name will match lighting scene name
 - Dealer will need to select appropriate icon from property [Icon Style](#)

Preset Mode: Trigger Nanoleaf Effect

This preset allows the [Nanoleaf Lights](#) using the [Nanoleaf Controller Control4 Driver](#) to trigger **Effects** on the product.

- if *Auto Rename* is enabled
 - Driver name will match Effect name
 - Dealer will need to select appropriate icon from property [Icon Style](#)
-

Driver Settings

Driver Properties

- *Cloud Status*: Displays driver license state
- *Driver Status*: Displays driver related information
- *Driver Version*: Displays driver version
- *Driver Actions*:
 - *Trigger Preset*: Will execute the preset

- *Reset Preset*: Sets preset back to non-triggered state. Any timers/auto-forward actions are cancelled (does not trigger Off Actions)
- *Trigger Off Action* Executes the programmed off actions. Any timers/auto-forward actions are cancelled
- *Preset Mode* Selects the configuration mode of this driver (see [Driver Setup](#) for list of possible modes)
- *Lights*: Sets the lights that will be controlled by this preset
 - Available in: Single Color, Select Temperature, Rotate, Randomize
- *Set Color*: Selects what color will be called when preset is executed.
 - Available in: Single Color
- *Set Temperature*: Selects the Kelvin value temperature you want the lights to go to.
 - Available in: Select Temperature
- *Advanced Lighting Scene*: Sets which lighting scene to be executed
 - Available in: Trigger Advanced Lighting Scene
- *Nanoleaf Controllers*: Selects the Nanoleaf controllers to trigger the effect on
 - Available in: Trigger Nanoleaf Effect
- *Nanoleaf Effect*: Selects which effect on that is available on ALL selected Nanoleaf lights (controllers)
 - Effect must exist on all Nanoleaf controllers to be available to trigger
 - Available in: Trigger Nanoleaf Effect
- *Amount of Colors*: Choose the amount of custom colors to traverse through
 - Available in: Randomize Colors, Rotate Colors
- *Colors 1-10*: Selects the color that is to be used (and what order for Rotate)
 - Available in: Randomize Colors, Rotate Colors
- *Set Brightness*: Choose the brightness level of the lights when this preset executes
 - Available in: Single Color, Rotate Colors, Randomize Colors, Select Temperature
 - Setting to **-1** will NOT include a brightness value to the light
- *Set Fade*: Sets the amount of time the lights will take to reach preset action (milliseconds)

- Available in: Single Color, Rotate Colors, Randomize Colors, Select Temperature
- *Auto Forward*: A timer that will trigger the next color/item in the preset action (seconds)
 - Timer starts after fade has completed
 - Setting to **-1** will disable auto forward (default setting)
 - Can set value up to 86400 (1 day)
 - Available in: Rotate Colors, Randomize Colors
- *Auto Off Timer*: Displays the current Auto Off timer status
- *Auto Off*: A timer that will trigger the Preset Off Action (seconds)
 - Setting to **-1** will disable auto forward (default setting)
 - Can set value up to 86400 (1 day)
 - Available in: Select Color, Rotate Colors, Randomize Colors, Select Temperature, Trigger Nanoleaf Effect
- *Preset Off Action*: A predefined action for Off
 - *nothing* (default)
 - *Custom Event* Triggers Composer Event for dealer specific options
 - *Turn Off Lights* Sets brightness to 0% on connected lights
- *Icon Style*: See [Icon Style](#) for more
- *Auto Rename* If yes, driver will update icon + driver name based on preset mode selected
- *UIButton: Single Tap*: Sets what happens when the icon is single tapped
- *UIButton: Double Tap*: Sets what happens when the icon is double tapped
 - NOTE: As of OS3 double tap must be done SLOWLY! It will NOT work if you quickly press the button twice.

Events/Commands

- **Events**
 - *Preset Triggered*: Triggers when a preset action happens
 - *Custom Off Event Triggered*: When Off Timer expires and Property *Preset Off Action* is set to Custom Event
 - *Custom Single Tap Event*: When a single tap event happens. Requires Property *UIButton: Single Tap* to be set to Custom Event

- *Custom Double Tap Event*: When a double tap event happens. Requires Property *UIButton: Double Tap* to be set to Custom Event

- **Commands**

- *Trigger Preset*: Triggers the preset setup in driver
- *Trigger Off*: Triggers the Timer Off Action on the driver

UI Settings

This driver uses the UI button proxy from Control4. This proxy allows custom icons to be displayed on Control4 Navigator. The driver has the ability to trigger quick actions when the icon is pressed. Here are the defaults:

- *UIButton: Single Tap*: Trigger Preset
 - *Trigger Preset* Triggers the preset mode setup in the driver
 - *Preset Off Action* Triggers the action assigned to Property *Preset Off Action*
 - *Custom Event* Triggers Composer Event for dealer specific options
 - *Set Lights to Black* Sets light color to RGB: 0,0,0 (Black)
 - *Link Lighting Scene Off* (only for Trigger Advanced Lighting Scene) links the drivers *off* scene to the selected lighting scenes *toggle* scene
 - *Nothing* Driver will not react to a button push
- *UIButton: Double Tap*: Nothing
 - *Same options as Single Tap*

NOTE: As of OS3 double tap must be done slowly (Press... Press). It will NOT work if you quickly press the button twice.

UI Icon Styles

This driver comes with different icons the dealer can choose from to be displayed by Navigator. They are as follows:

General Colors

Salmon

Red

Lotus

Maroon



Gunmetal



Black



Khaki



Yellow



Sienna



Burnt Orange



Blood Orange



Amber



Pale Green



Chartreuse



Green



Lime



Dark Green



Light Goldenrod



Spring



Sea Green



Turquoise



Fun Green



Cyprus



Gray



Anakiwa



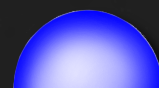
Cyan



Congress Blue



Blue





Navy



Aquamarine



Blue Ribbon



Sky Blue



Malibu



Deep Blue



Stratos



Silver



Hot Pink



Light Purple



Dark Pink



Eggplant





Blackberry



Orchid



Magenta



Rose



Electric Violet



Indigo



White



Temperature

Low
(Kelvin < 2000)



Warm
(2000 < Kelvin < 3500)



Cool-Warm
(3500 < Kelvin < 4500)



Cool
(4500 < Kelvin)



Specialty

Random



Rotate



RGB



Full Bright Yellow



Showroom and Free Trial

All Cindev drivers for Control4 come with a 7-day trial. Simply add the drivercentral licensing driver, *Cloud Driver*, along with this driver and you can fully test the driver before purchasing. Including Cindev drivers in your drivercentral showroom project will give you unlimited use without purchase.

Support

If you require additional driver assistance or are having some issues please visit our help desk: <https://help.drivercentral.io>

Warranty & Disclaimer

www.cindev.com/terms-and-conditions

Developer Information

brought to you by:
Cinegration Development, LLC



www.cindev.com
www.drivercentral.io/cinegration/

We are always looking to improve our drivers.
Please send your suggestions to: info@cindev.com